

MISSION BRIEF

The Planet

Pollux 3 (third planet orbiting the Pollux star in the constellation of Gemini) has been classed as potentially habitable. Before settlers arrive there the scientists must know everything possible about the planet. Its atmosphere, climate, fertility and other factors which will determine the ease with which human life can survive. Other factors must also be known, such as predators and other life forms - that's where you come in.

The Mappers

Mappers are technically illegal under the 2582 Planetary Exploration Act which states "...and no person shall cause disturbance directly or indirectly to the planet or its inhabitants and shall not enter the planet's atmosphere without said planet being passed as habitable by law."

A Mapper is an explorer paid by institutions and large companies to obtain the more dangerous or difficult facts about a planet. Although illegal the government often turns a blind eye to such illegitimate explorations due to the population pressure for new habitation.

Your Mission

As a Mapper you are to explore the planet of Pollux 3, or at least your assigned sector, and bring back certain samples given in the specimen guide. You will be dropped down in the area to be explored and given map coordinates of all your outdoor locations, beamed down to you from the orbiting ship.

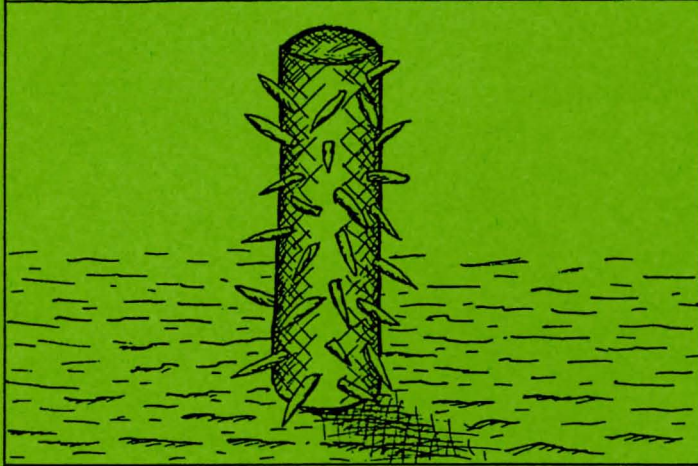
Be warned, no previous expedition has survived without casualties and little information has so far been gathered. Good luck.

Your Equipment

You start your mission with a backpack, a small knife, and a self recharging laser - a deadly weapon. You may use anything you find on your way.

SPECIMEN GUIDE

Manra



Nothing is known about this plant but from it's appearance it has initially been classed as hazardous.

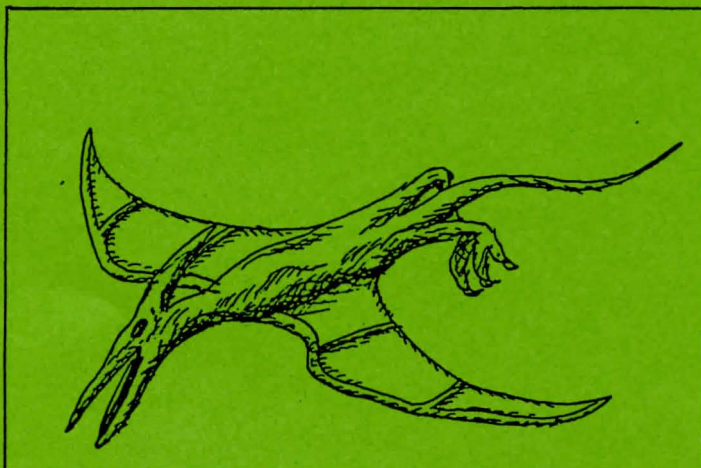
Known as Tree of Spikes.

Marius



This vegetarian mammal is only a few feet high but has powerful hind legs that allow it to defy all attempts at capture.

Combratadon

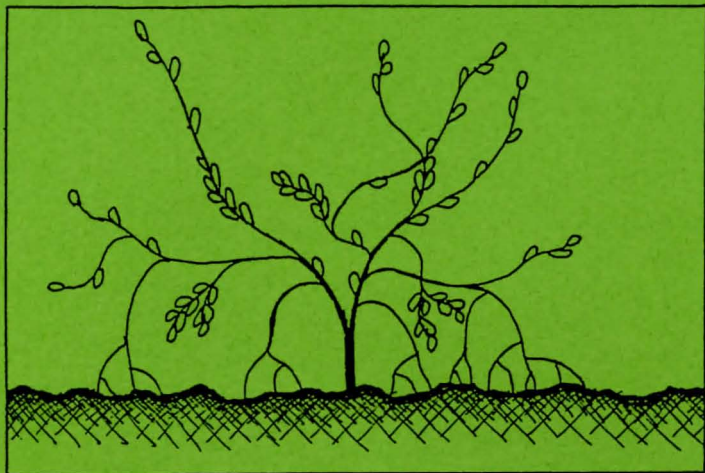


This predatory reptile is known to nest high in the trees at the edges of plains on which it hunts. It has strong claws with which it grabs it's prey and often carries it back to it's nest.

Known as Darter.

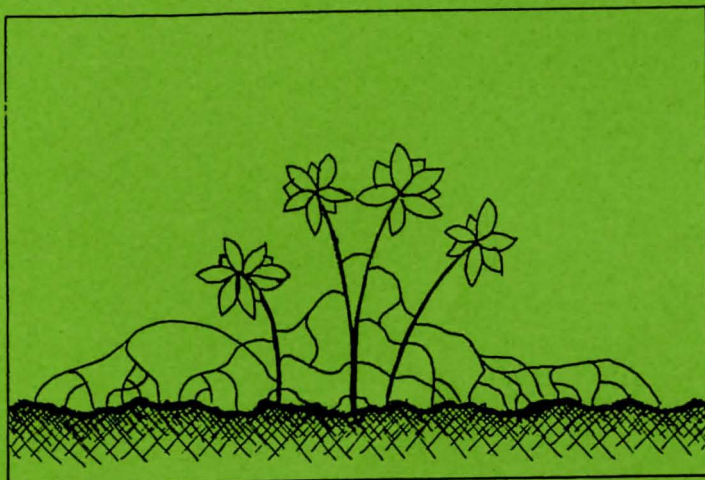
SPECIMEN GUIDE

Cornicus (Small leaved)



This plant is, as far as known, completely non-hostile and in fact edible. Previous explorers have claimed it seems to give strength but these claims have not been scientifically proven due to lack of samples.

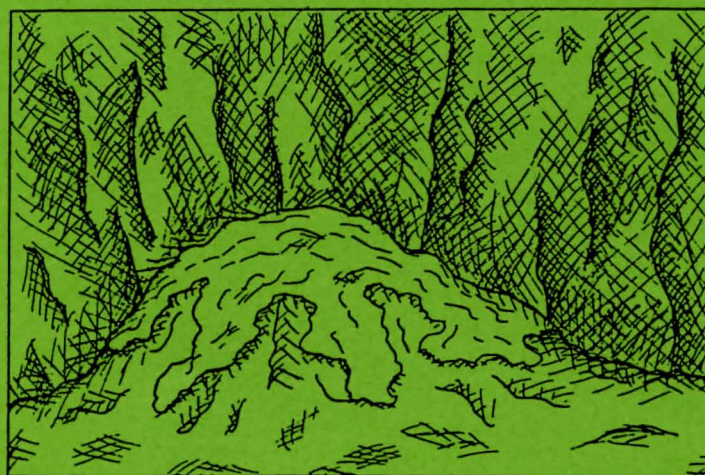
Faimner (Medium leaved)



Little is known of this plant except that the outspread roots appear to grab hold of any nearby moving objects. Further examination so far impossible.

Known as Tangle Plant.

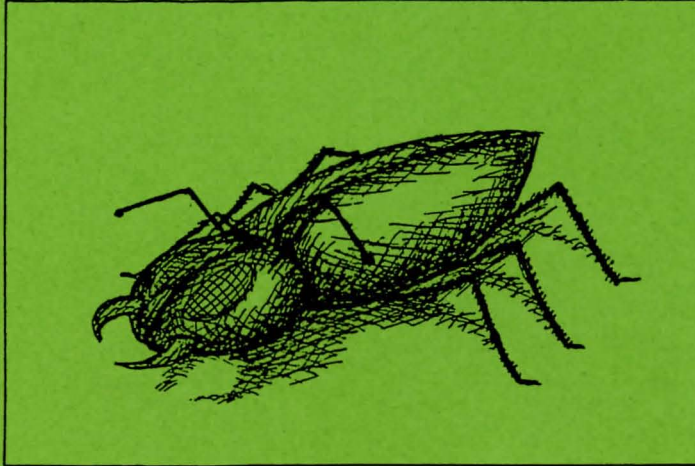
Ferrious



This small fungus is moss-like in appearance and is assumed to be harmless. It is known to grow in very dark, moist places.

SPECIMEN GUIDE

Parisias



These small beetle-like creatures appear to be social creatures that fly around in large swarms. No close examination of them has been possible yet but there is some suspicion they are carnivorous.

Known as the Nomadic Beetle.

Forus Arachnus



This spider is approximately three feet across and lives in small burrows with a trapdoor above it, out of which the spider rushes when prey approaches. No further information available.

Known as Giant Trapdoor spider.