

COLONEL'S BEQUEST™

A Laura Bow Murder Mystery

HINT BOOK

by

Roberta Williams

Welcome to *THE COLONEL'S BEQUEST*, a "Laura Bow Murder Mystery."

The hero, or should I say, heroine of the story is Laura Bow, a young college student majoring in journalism at Tulane University in New Orleans. Having been invited to spend a "family reunion" weekend at the isolated bayou estate of a friend's rich uncle, she is suddenly and innocently caught up in a terrible series of murders beginning that first night.

While endeavoring to keep herself from becoming a victim of some maniacal killer, Laura, being a courageous, intuitive, and very curious girl, searches out clues, asks questions of remaining guests, and keeps her eyes open for any or all unusual happenings in an attempt to determine who might be doing these terrible deeds. Can Laura not only find the killer but possibly apprehend him or her? Is there more to the estate than meets the eye? Is escape possible? Can she not only stop the murderer but save lives as well? Could the Colonel's will have anything to do with the murders? Well...these are indeed awesome questions. So put on your detective hat and supply the help and encouragement that Laura will need to determine the answers!

The whole story of *THE COLONEL'S BEQUEST* occurs in one long night, but it is NOT a timed game. Therefore, feel no rush to solve it. It has the feel of a play and is actually divided up into eight separate "acts." The acts will proceed according to what you DO and will not only help to determine your progress, but will move the story along as well. Be very observant, look for clues, and save your game OFTEN. Once you've got the hang of it you'll find that being a "sleuth" can be fun and rewarding!

Upon playing the game you will quickly notice that *THE COLONEL'S BEQUEST* does not have a score system. There are no "points" you can earn. There is no "maximum score." It was felt that a score system would detract from the story and make *THE COLONEL'S BEQUEST* look too "game-like." We wanted the player to concentrate on the STORY rather than on winning POINTS. So...without a score system, how would a player's progress be gauged? That question had us stumped for awhile, too. The answer is in two parts: First, moving on to a new "act" will help to determine your progress, and, second, the game will review what you KNOW and what you DON'T KNOW at the end of the game, and if you wish, supply "hints" to steer you in

the right direction upon re-play of the game. The game will then "rank" you as to your detecting skills.

To play an adventure game is to enter a fantasy world where YOU are the hero or heroine. You will be Laura Bow. You will guide her. You will think for her. Unfortunately if you are not careful, you will die with her. As Laura, throughout the game, you will encounter obstacles and puzzles designed to thwart you. Many times you may feel that all you need is a little hint in the right direction to get going again. Other times a puzzle may have you so confounded that you require the answer! Hopefully, if you're stumped, this hint book will put you back on track again.

How to use a hint book

If you feel you're stuck, look for a question that most resembles your problem. The hints usually progress, from top to bottom, from a mere hint or "nudge" to an outright answer to the problem. To uncover an answer to a question, simply place the see-through red "adventure window" over the first box. Seemingly by magic the answer will appear! I feel it's best to solve adventure games without looking at too many answers. At first, try to get by on just a small hint. ONLY if you're REALLY stumped should you go for the answer.

How NOT to use a hint book

I have NOT created this book with the intention that you should sit down and read it through before playing the game. Rather, the opposite is true. I would feel most proud to have you use this book as little as possible. That would show great integrity and perseverance on your part. If you must have help, read only those hints pertaining to your particular problem. To be a bit sneaky, though, I've included some fake hints to throw you off the path. If you see a question regarding an heirloom brooch, don't necessarily assume that an heirloom brooch even exists in this game!

If you've finished *THE COLONEL'S BEQUEST*

If you've "won" the game but did not make the rank of "Super Sleuth," I'm sure that we can entice you to play again to better your rank. If you did not make "Super Sleuth," there are things you did not do or see. Start the game over from the

beginning. Be more observant. Try to "get" everything you can. In some situations, try doing things differently than you did before.

I've included a section toward the end of this book called "After the End of the Game." Do NOT read this section unless you feel you've tried everything and cannot seem to obtain the rank of "Super Sleuth." This section will tell you which items you might not have gotten, things you might not have done or seen, or alternate ways of doing things. Again, do NOT treat this section lightly. To see it too soon could ruin the game for you.

If you have enjoyed this game, I'm sure that you will like our other animated adventure games: *King's Quest I, II, III, and IV*; *Space Quest I, II, and III*; *Police Quest I and II*; *Leisure Suit Larry I, II, and III*; *Manhunter I and II*; *Hero's Quest I*; *Codename: ICEMAN*; *Conquest Of Camelot*; *The Black Cauldron*; *Gold Rush*; and last but not least, *Mixed-up Mother Goose* for the little ones.

Good luck on your adventure, and I truly hope you enjoy *THE COLONEL'S BEQUEST*!

Roberta Williams

General Questions

All I do is wander around! There must be more to an adventure game than this?!

It's not that you're wandering around. It's that you're not trying to solve the puzzles. The puzzles are the heart of the game. They are what make it an adventure game. If you don't solve the puzzles, you won't be able to progress. So, stop wandering around and start solving puzzles. You'll find that the game is much more interesting when you do.

This game is too fast! This game is too slow!

The game is designed to be played at your own pace. If you find it too fast, you can take your time. If you find it too slow, you can speed up. The game is flexible and can adapt to your needs.

How do I "see" the items I'm carrying?

When you are carrying items, they will be listed in the inventory window. You can click on the items to see their details. You can also click on the items to use them.

How do I "drop" items?

To drop an item, click on the item in the inventory window. Then, click on the "Drop" button. The item will be dropped on the ground.

Am I the only one who keeps failing in my goal? I'm tired of starting all over again from the beginning of the game. What am I doing wrong?

It's not that you're failing. It's that you're not trying hard enough. You need to be persistent and keep trying. You will eventually succeed.

But some people feel a little more confident, as though a "broken" thing has been made better and complete. And the new attitude to work and life has been formed. The current affairs have been all over again, and the work is over.

As a result, the study was a quasi-experimental design. The 100 subjects were randomly divided into two groups: the control group (50 subjects) and the experimental group (50 subjects). The subjects in the control group received the traditional training, while the subjects in the experimental group received the training with the use of the 3D motion capture system. The subjects in the control group were given the traditional training, while the subjects in the experimental group were given the training with the use of the 3D motion capture system. The subjects in the control group were given the traditional training, while the subjects in the experimental group were given the training with the use of the 3D motion capture system. The subjects in the control group were given the traditional training, while the subjects in the experimental group were given the training with the use of the 3D motion capture system.

Where does Laura put all that stuff she's carrying?

For more information, please contact: info@hugoboss.com

Characters in the Game

Colonel Henri Dijon

Full Text Available: **Abstract:** The aim of this study is to determine the frequency of using and identifying the source of health information among the general population in Istanbul.

Ethel Prune

The authors declare that they have no competing financial interests. No funding was provided for this work. The authors have nothing to disclose.

Lillian Prune

Table 7. *Relative fitness* (λ) of the *g* and *g'* alleles in the *g*-*g'* system. Relative fitness was estimated by comparing the number of offspring per female in the *g*-*g'* system to the number of offspring per female in the *g*-*g* system.

Gertrude Dijon

These authors have focused on the importance of the role of the physician in the diagnosis and management of the patient with the aim of improving the quality of care and the patient's health.

Gloria Swansong

For example, the following sentence is false in a language with no nouns: "The cat is on the mat." The sentence is false because there is no cat and no mat, and hence no mat on which the cat is.

Rudolph Dijon

Further down the page, under the heading "Additional Information," visitors are informed that the book is available in a variety of formats, including print, digital, and audiobook. The page also includes a link to the book's website, where visitors can learn more about the book and its authors.

Clarence Sparrow

THE COUNTRY'S *WORLD* JOURNAL: 100+ YEARS OF THE COUNTRY'S HISTORY
 FROM THE 19TH CENTURY TO THE PRESENT DAY

Dr. Wilbur C. Feels

the Communist Party into a political party. In 1944, the party made the decision to join the United Front coalition. It believed that it was better to work with the Nationalist Government than to remain a fringe group.

Jeeves

But should it be the highest priority? "I'm not sure," says the author. "It's important to determine the extent of the problem, but we need to be realistic."

Fifi

[illegible]

Celie

The 1000th anniversary of the founding of the city of Moscow is celebrated in the Federal and Moscow regions, the city of Moscow, Moscow region, St. Petersburg and the Russian Federation.

Beauregard, Blaze, and Polly

[illegible]

General Exploration in the Mansion

I found a skeleton in the closet! Eeeeeeeek!!

Is there a deletion in n 'close'? I don't remember there being one!

There is a Johnson, and there is a Joliet, but I don't think they are together.

1) The first priority is to ensure that the system is secure. This is done by implementing a robust security policy that covers all aspects of the system, from access control to data protection. The policy should be reviewed and updated regularly to reflect changes in the system and the threat landscape.

I think you have put a lot of emphasis on my new question is a good question. There is no question is a good.

Just because a question has a lot of answers doesn't necessarily mean it's a real question. It can still be naive.

[illegible]

The crystal chandelier keeps falling on me!

Copyright © 2007 by Lippincott Williams & Wilkins

I want to go into the elevator but the Colonel won't let me!

Don't forget to say NO, you have an excellent right to know what is in the food you eat.

The Colonel can only guess that you're in his room when HE'S in his room.

Therefore, the Colonel must not ALWAYS be in his room.

Keep going back to the Colonel's room throughout the game. You will discover that sometimes he's there, and sometimes he's not.

Okay, I finally managed to enter the elevator. I think it can go up to the attic. How do I get it to go there?

You're right. I will go up to the attic. There is something you need in order to fix this.

You need 1 KPI to be able to take the elevators up to the sky.

There is a key in the Colonel's room. This key enables the character to go up to the attic.

The key to the elevator is hidden in the barrel of the miniature canon on the Colonel's fireplace mantle. This key enables the elevator to go up to the attic.

I discovered a chute! Where does it go? Can I go down it safely?

NO! You cannot go down it safely. EVER!

There is never a way you can go DOWN it safely. However, there is a way that you can eventually get to the bottom of it.

The church ends up in the basement below the house. By finding your way to the basement, you can find the bottom of the church.

I want to take the doctor's bag. How can I do that?

It's not your bag (no pun intended).

There is one reason for you to take the shorter view. It is only when the time is 50:50 % that there are train alongs between in this game and not otherwise.

I found a tortoise shell comb! What do I do with it? Should I wear it in my hair?

Sure, if you want to!

On the other hand, I don't think that's possible.

It's not possible because there is NO tortoise shell comp in this game. Gotcha!

I know there is an attic as I can sort of see it behind a locked door on the third level. How can I go there?

There are actually *TWO* ways to get into the act. One way is starting from the third act, but the other way you can take until the eighth act.

The elevator will take you up to the attic starting from the first floor. In the eighth room, you can find a skeleton key that will unlock the attic door.

You need to limit your use of the program's options on the Command Window. For example, if you use the **Plot** menu option, then the plot window that is opened will be the same as the one that you see. This has no effect on the program, but it is the same as the **Plot** menu option. The **Plot** menu option will only be used when you need to plot with a plot window.

I suspect there is at least one secret passage or room, in this house. Am I right?

Really? How can I look for a secret room, passage or door?

Although there are many secret passages in the house.

For example, in the kitchen there's this door which is a doorway to the study. That's the secret passage.

There's also a doorway in the study which is a doorway to the garden and the garage.

There's the study which is the entrance to the study. That's the secret passage. In the study there's a doorway which is a doorway to the study. The same doorway which is the entrance to the study.

There's the doorway in the study which is the entrance to the study. That's the secret passage. In the study there's a doorway which is a doorway to the study. The same doorway which is the entrance to the study.

I've noticed several large pictures on the walls in various rooms. Is there anything special with them?

There's something special about the pictures which are in the study. They're all portraits of the same person.

There's also a picture of the same person in the study. That's the secret passage.

The pictures in the study are all portraits of the same person.

I discovered some weapons in the study. I would like to arm myself. How can I do that?

There's a secret passage in the study which is a doorway to the study.

There's also a secret passage in the study which is a doorway to the study.

The secret passage in the study is a doorway to the study. That's the secret passage.

What can I do with the globe in the study?

Nothing. It's just a globe.

There's nothing you can do with the globe. It's just a globe.

What can I do with the dog? He just lies there!

Yes. The dog is just lying there. There's only one thing you can do with the dog. You can just lie there.

Something about the dog is just lying there. There's only one thing you can do with the dog. You can just lie there.

There's something about the dog is just lying there. There's only one thing you can do with the dog. You can just lie there.

I think there's something special with the player piano but I can't find anything!

There's something special about the player piano. It's just a player piano.

The player piano is just a player piano. It's just a player piano.

I want to play billiards! How can I do this?

There's something special about the billiards. It's just a billiards.

There's also something special about the billiards. It's just a billiards.

I try to "talk" to the parrot but all he does is either "squawk" at me or ask for crackers! Would crackers help?

There's something special about the parrot. It's just a parrot.

There's also something special about the parrot. It's just a parrot.

There's something special about the parrot. It's just a parrot.

I see a mirror hanging on the wall in the downstairs hallway. Is there anything special with it?

Oh, a mirror of that kind is something you'll find in almost every house. It's not like the mirror in the bathroom or the one in the bedroom. It's just a "hallway" or "passing" mirror and isn't used much or at all. It doesn't really have any special purpose.

I found an empty closet. Is it always empty?

Oh, well, yes. Most of the time it's empty. Usually, though, you may find coats and suits hanging in it. Sometimes you may find a hat or two hanging there.

How can I "open" or "close" the murphy bed?

Oh, you'll find that fairly easy. Just pull the handle that's built in to the bed. Or, if you're alone, you can pull on the foot.

I finally got into the attic but I don't see anything interesting. What gives?

Well, you see the attic is pretty much empty. And that's the way it's always been. It's just a place to put things. It's not a museum or anything. It's just a place to put things. You can find the things you need in the attic. It's not a museum or anything. It's just a place to put things. You can find the things you need in the attic.

Is there anything else besides old army clothes in the attic trunk?

That's all there is. It's just old army clothes. You can find them in the attic. It's not a museum or anything. It's just a place to put things. You can find the things you need in the attic.

How can I play a record on the Victrola?

Oh, that's easy. You just put the record on the turntable. And then you turn the handle. It's not a museum or anything. It's just a place to put things. You can find the things you need in the attic.

Can I EVER look into any of the suitcases besides my own?

Oh, sure. You can. It's not a museum or anything. It's just a place to put things. You can find the things you need in the attic. It's not a museum or anything. It's just a place to put things. You can find the things you need in the attic.

How can I unlock the music box?

Oh, that's easy. You just turn the handle. It's not a museum or anything. It's just a place to put things. You can find the things you need in the attic. It's not a museum or anything. It's just a place to put things. You can find the things you need in the attic.

I can't seem to do anything with the suit of armor because it's so rusted!

Oh, that's easy. You just turn the handle. It's not a museum or anything. It's just a place to put things. You can find the things you need in the attic. It's not a museum or anything. It's just a place to put things. You can find the things you need in the attic.

I want to take the battle axe from the suit of armor. How can I do that?

Oh, that's easy. You just turn the handle. It's not a museum or anything. It's just a place to put things. You can find the things you need in the attic. It's not a museum or anything. It's just a place to put things. You can find the things you need in the attic.

I think there's something more to the grandfather clock than telling time!

Oh, that's easy. You just turn the handle. It's not a museum or anything. It's just a place to put things. You can find the things you need in the attic. It's not a museum or anything. It's just a place to put things. You can find the things you need in the attic.

I got killed when I took a shower!

Fig. 6. The effect of the concentration of the inhibitor on the rate of polymerization

Are there any books I can take, or read, in the library?

It's not like *Black Girls* and actually it's not a book, it's a presentation.

But with the financial crisis we "read" the same text. But Kabbalah was reading. You can take it with you, wherever.

General Exploration Outside or in the Outbuildings

An alligator ate me!

Ph. no. 1241's two birds

1. **Identify the main idea of the passage.**

I want to escape from this island! How can I do that?

You can't. At least not until the end of the game.

There is still more to do this phase. If you can, stay on the long night and bring the kids to school, you can leave the next day.

I noticed a well. Is there anything down there?

At season's end there might be

Nothing you would want, though.

You should find a few small birds at some sites.

I looked around in the old carriage house but couldn't find anything.

Did you look carefully enough?

“Did you look in the red car?” You might find something that

you can find a market in the wild, or you can

You can also find the content for the table

I've seen several statues around the property. Are any of them significant?

One of them is

The value in the header section is

Kelly, J. A., and J. C. Powell. 1986. Effects of the Bay of the Gulf.

On 15th March 2010, the following 12 people were interviewed:

What's with the gazebo? There doesn't seem to be anything there.

There isn't always a need to go up it.

As noted earlier, there could be substantial costs

© 2004 Blackwell Publishing Ltd *Journal of Internal Medicine* 255: 105–112

What do I do with the pansies I picked from the flower bed? Should I give them to someone?

Introduction

Downloaded from <http://ajph.org/> on November 10, 2014

Keywords: child sexual abuse; disclosure; social support

Keywords: child sexual abuse; disclosure; social support

The horse is not very friendly! In fact he's downright mean!

5th March 2018

The best way to protect your data is to use a secure connection.

Next, I take this story from *SENSE* with the names and I imagine it is the story of a woman. But I need to make details with her to be able to do this.

As with the human data, the three subjects gave the same 100% rating. Thus, the rating criteria were the same for the subjects, other than the fact that each subject had a different number of trials.

I see the lantern, but I can't get to it!

1. *Leaves of the grass*

Don't let your friends invade Carter's home and visit to the house. The show will be online when you want to watch it.

What's with the old swing?

It looks like it's broken and it's old.
It's a relic from the 19th century. I don't want it.

I think there's something important in the wall safe! How can I open it?

It's a safe from the 19th century.
What's in it? I don't know. I don't know.
It's empty.
I don't know.
It's a safe from the 19th century.

I want to go into the playhouse but it's locked!

It's a playhouse from the 19th century.
It's a playhouse from the 19th century.
It's a playhouse from the 19th century.
It's a playhouse from the 19th century.

I've noticed there's a second-level porch on the front of the mansion. Can I ever get to it?

It's a porch from the 19th century.
It's a porch from the 19th century.

I see a fountain in the hedge garden. Is there anything special with it?

It's a fountain from the 19th century.
It's a fountain from the 19th century.
It's a fountain from the 19th century.
It's a fountain from the 19th century.

How can I get into the locked tool shed?

It's a tool shed from the 19th century.
It's a tool shed from the 19th century.
It's a tool shed from the 19th century.
It's a tool shed from the 19th century.

The cellar door is locked. I want to go in there!

It's a cellar door from the 19th century.
It's a cellar door from the 19th century.
It's a cellar door from the 19th century.
It's a cellar door from the 19th century.

I don't see anything special in the chapel.

It's a chapel from the 19th century.
It's a chapel from the 19th century.
It's a chapel from the 19th century.
It's a chapel from the 19th century.

I see chickens in the chicken coop by Celie's house. Can I do anything with them?

Yes.

Speaking of Celie's house, it's locked. How do I get in it?

It's a house from the 19th century.
It's a house from the 19th century.
It's a house from the 19th century.
It's a house from the 19th century.
It's a house from the 19th century.
It's a house from the 19th century.

How do I go across the broken bridge in the swamp? I think there's something over there.

It's a bridge from the 19th century.
It's a bridge from the 19th century.

I saw a ghost in the cemetery! What does it want? What do I do with it?

It's a ghost from the 19th century.
It's a ghost from the 19th century.
It's a ghost from the 19th century.
It's a ghost from the 19th century.
It's a ghost from the 19th century.

I can't find anything to do in the cemetery!

What can you do in a cemetery?

Search for graves of famous people and see if the cemetery has a museum or a tour of history.

There is a cemetery with water in the cemetery garden.

It is a small garden with a water pump and a well. You can see the water pump and the well. This is a very old water pump and well.

There is a water pump and a well in the cemetery garden. You can see the water pump and the well. This is a very old water pump and well.

I would like to ring the bell in the bell tower but I can't reach the rope!

What can I do to ring the bell?

What can I do to ring the bell in the bell tower?

It is a very old bell tower and the bell is very old. You can see the bell and the bell tower. This is a very old bell tower and the bell is very old.

It is a very old bell tower and the bell is very old. You can see the bell and the bell tower. This is a very old bell tower and the bell is very old.

I climbed the ladder up the side of the bell tower but I can't see anything to do up there!

What can I do up there?

What can I do?

What do I do with the cookies I found in the cookie jar?

What can I do with the cookies I found in the cookie jar?

What can I do with the cookies I found in the cookie jar?

What can I do with the cookies I found in the cookie jar?

I found an oilcan! Now...what do I do with it?

What can I do with the oilcan?

What can I do with the oilcan?

What can I do with the oilcan?

I see some old sugar cane fields on the other side of a wooden fence. How do I get into those fields?

What can I do?

What can I do with the old sugar cane fields on the other side of a wooden fence?

What is there to DO in the rose garden besides smell the roses?

What can I do in the rose garden besides smell the roses?

What can I do in the rose garden besides smell the roses?

I can't find anything to do in the hedge garden.

What can I do in the hedge garden besides smell the roses?

What can I do in the hedge garden besides smell the roses?

What can I do in the hedge garden besides smell the roses?

I found a trapdoor that leads underground! Now...how can I enter it? Everytime I try I fall down the stairs and kill myself!

What can I do with the trapdoor that leads underground?

What can I do with the trapdoor that leads underground?

What can I do with the trapdoor that leads underground?

I found an old Bible and read what was in it. What does all that stuff have to do with the current mystery?

What can I do with the old Bible?

What can I do with the old Bible?

Walk Through By Act

Before proceeding with the questions concerning the specific acts, it's important to understand how they work. The game is divided into eight "acts." Each act is broken down into four "must do's." (A "must do" refers to something a player **MUST DO** to move the story, and thus the acts, along.) The game "begins" at 7:00 p.m. according to the grandfather clock in the downstairs hallway. Each time the player completes a "must do" (which may be nothing more than observing a character, or characters, in a particular place, or room) the "clock" moves forward fifteen minutes. Therefore, after completing four "must do's" the time will then be 8:00 p.m. and Act II will begin. Each act, except for the first one, will begin with a murder. This will continue on through the eight acts. That is how time, and the acts, proceed. The player is actually "causing" the story to progress by exploring and observing events.

Act I

All the other characters seem to ignore me! How can I communicate with them?

For more information, contact the author at john@johnmccall.com.
 Copyright © 2006 John M. Call, Jr. All rights reserved. No part of this publication may be reproduced, stored in a retrieval system, or transmitted, in any form or by any means, electronic, mechanical, photocopying, recording, or by any information storage or retrieval system, without prior written permission from the author.

I want to “spy” on the other characters. Is there a way to do this?

© 2006 The Authors
Journal compilation © 2006 Blackwell Publishing Ltd

TIME: 40-50-75 MIN. (DEPENDING ON THE PLANT) SOIL AIR: 10-15% MOISTURE: 10-15% PH: 6.0-6.5

I noticed Wilbur reading a magazine in the library. I want that magazine but he won't let me have it!

For the first time, we have shown that the *in vitro* and *in vivo* results are in good agreement. The *in vivo* results are in good agreement with the *in vitro* results, and the *in vitro* results are in good agreement with the *in vivo* results.

Celie's not very nice to me! What did I do wrong?

The authors gratefully acknowledge the support from the National Natural Science Foundation of China [grant number 80973066] and the Shanghai Leading Academic Local Project [grant number Y1101.

J Child Psychol Psychiatr 2012; 53(12): 1203-12

Is the Colonel always such a grouch? Or is it me?

Journal of Interpersonal Violence 26(12)
 © The Author(s) 2011
 Reprints and permissions: sagepub.com/journalsPermissions.nav

What's with Jeeves? Why won't he talk to me?

© 2005 Blackwell Publishing Ltd, *Journal of Internal Medicine* 258: 105–112

Rudy told me about his affair with Ethel. Is that important to know?

© 2011 Blackwell Publishing Ltd *Journal of Internal Medicine* 270: 103–111

I'm confused about the dog. Am I supposed to do something with him?

122. <https://doi.org/10.1016/j.jmb.2015.05.010>

For more information, visit www.pearsoncmg.com or call 1-800-818-7243.

[illegible]

Is there a link between the two? I don't know. I'll leave it to the experts.

100% Cotton

© 2004 Blackwell Publishing Ltd, *Journal of Internal Medicine* 255: 105–112

Some of the authors are members of the *Centre for the Study of the History of the Book and the Book Trade* at the University of Cambridge.

The first year of the program is designed to help students develop a strong foundation in the field of business and to explore the various career options available. The second year of the program is designed to help students develop the skills and knowledge necessary to succeed in the business world. The third year of the program is designed to help students develop the leadership and management skills necessary to succeed in the business world. The fourth year of the program is designed to help students develop the critical thinking and problem-solving skills necessary to succeed in the business world.

2.4. In addition, the 2007–2008 season was the hottest year in the history of the region, with a mean of 1.58 days per month with temperatures above 30°C, compared to the long-term mean of 1.06 days per month (Table 1).

1994, 1995, 1996, 1997, 1998, 1999, 2000, 2001, 2002, 2003, 2004, 2005, 2006, 2007, 2008, 2009, 2010, 2011, 2012, 2013, 2014, 2015, 2016, 2017, 2018, 2019, 2020, 2021, 2022, 2023, 2024, 2025, 2026, 2027, 2028, 2029, 2030, 2031, 2032, 2033, 2034, 2035, 2036, 2037, 2038, 2039, 2040, 2041, 2042, 2043, 2044, 2045, 2046, 2047, 2048, 2049, 2050, 2051, 2052, 2053, 2054, 2055, 2056, 2057, 2058, 2059, 2060, 2061, 2062, 2063, 2064, 2065, 2066, 2067, 2068, 2069, 2070, 2071, 2072, 2073, 2074, 2075, 2076, 2077, 2078, 2079, 2080, 2081, 2082, 2083, 2084, 2085, 2086, 2087, 2088, 2089, 2090, 2091, 2092, 2093, 2094, 2095, 2096, 2097, 2098, 2099, 2100, 2101, 2102, 2103, 2104, 2105, 2106, 2107, 2108, 2109, 2110, 2111, 2112, 2113, 2114, 2115, 2116, 2117, 2118, 2119, 2120, 2121, 2122, 2123, 2124, 2125, 2126, 2127, 2128, 2129, 2130, 2131, 2132, 2133, 2134, 2135, 2136, 2137, 2138, 2139, 2140, 2141, 2142, 2143, 2144, 2145, 2146, 2147, 2148, 2149, 2150, 2151, 2152, 2153, 2154, 2155, 2156, 2157, 2158, 2159, 2160, 2161, 2162, 2163, 2164, 2165, 2166, 2167, 2168, 2169, 2170, 2171, 2172, 2173, 2174, 2175, 2176, 2177, 2178, 2179, 2180, 2181, 2182, 2183, 2184, 2185, 2186, 2187, 2188, 2189, 2190, 2191, 2192, 2193, 2194, 2195, 2196, 2197, 2198, 2199, 2200, 2201, 2202, 2203, 2204, 2205, 2206, 2207, 2208, 2209, 2210, 2211, 2212, 2213, 2214, 2215, 2216, 2217, 2218, 2219, 2220, 2221, 2222, 2223, 2224, 2225, 2226, 2227, 2228, 2229, 2230, 2231, 2232, 2233, 2234, 2235, 2236, 2237, 2238, 2239, 2240, 2241, 2242, 2243, 2244, 2245, 2246, 2247, 2248, 2249, 2250, 2251, 2252, 2253, 2254, 2255, 2256, 2257, 2258, 2259, 2260, 2261, 2262, 2263, 2264, 2265, 2266, 2267, 2268, 2269, 2270, 2271, 2272, 2273, 2274, 2275, 2276, 2277, 2278, 2279, 2280, 2281, 2282, 2283, 2284, 2285, 2286, 2287, 2288, 2289, 2290, 2291, 2292, 2293, 2294, 2295, 2296, 2297, 2298, 2299, 2300, 2301, 2302, 2303, 2304, 2305, 2306, 2307, 2308, 2309, 2310, 2311, 2312, 2313, 2314, 2315, 2316, 2317, 2318, 2319, 2320, 2321, 2322, 2323, 2324, 2325, 2326, 2327, 2328, 2329, 2330, 2331, 2332, 2333, 2334, 2335, 2336, 2337, 2338, 2339, 2340, 2341, 2342, 2343, 2344, 2345, 2346, 2347, 2348, 2349, 2350, 2351, 2352, 2353, 2354, 2355, 2356, 2357, 2358, 2359, 2360, 2361, 2362, 2363, 2364, 2365, 2366, 2367, 2368, 2369, 2370, 2371, 2372, 2373, 2374, 2375, 2376, 2377, 2378, 2379, 2380, 2381, 2382, 2383, 2384, 2385, 2386, 2387, 2388, 2389, 2390, 2391, 2392, 2393, 2394, 2395, 2396, 2397, 2398, 2399, 2400, 2401, 2402, 2403, 2404, 2405, 2406, 2407, 2408, 2409, 2410, 2411, 2412, 2413, 2414, 2415, 2416, 2417, 2418, 2419, 2420, 2421, 2422, 2423, 2424, 2425, 2426, 2427, 2428, 2429, 2430, 2431, 2432, 2433, 2434, 2435, 2436, 2437, 2438, 2439, 2440, 2441, 2442, 2443, 2444, 2445, 2446, 2447, 2448, 2449, 2450, 2451, 2452, 2453, 2454, 2455, 2456, 2457, 2458, 2459, 2460, 2461, 2462, 2463, 2464, 2465, 2466, 2467, 2468, 2469, 2470, 2471, 2472, 2473, 2474, 2475, 2476, 2477, 2478, 2479, 2480, 2481, 2482, 2483, 2484, 2485, 2486, 2487, 2488, 2489, 2490, 2491, 2492, 2493, 2494, 2495, 2496, 2497, 2498, 2499, 2500, 2501, 2502, 2503, 2504, 2505, 2506, 2507, 2508, 2509, 2510, 2511, 2512, 2513, 2514, 2515, 2516, 2517, 2518, 2519, 2520, 2521, 2522, 2523, 2524, 2525, 2526, 2527, 2528, 2529, 2530, 2531, 2532, 2533, 2534, 2535, 2536, 2537, 2538, 2539, 2540, 2541, 2542, 2543, 2544, 2545, 2546, 2547, 2548, 2549, 2550, 2551, 2552, 2553, 2554, 2555, 2556, 2557, 2558, 2559, 2560, 2561, 2562, 2563, 2564, 2565, 2566, 2567, 2568, 2569, 2570, 2571, 2572, 2573, 2574, 2575, 2576, 2577, 2578, 2579, 2580, 2581, 2582, 2583, 2584, 2585, 2586, 2587, 2588, 2589, 2590, 2591, 2592, 2593, 2594, 2595, 2596, 2597, 2598, 2599, 2600, 2601, 2602, 2603, 2604, 2605, 2606, 2607, 2608, 2609, 2610, 2611, 2612, 2613, 2614, 2615, 2616, 2617, 2618, 2619, 2620, 2621, 2622, 2623, 2624, 2625, 2626, 2627, 2628, 2629, 2630, 2631, 2632, 2633, 2634, 2635, 2636, 2637, 2638, 2639, 2640, 2641, 2642, 2643, 2644, 2645, 2646, 2647, 2648, 2649, 2650, 2651, 2652, 2653, 2654, 2655, 2656, 2657, 2658, 2659, 2660, 2661, 2662, 2663, 2664, 2665, 2666, 2667, 2668, 2669, 2670, 2671, 2672, 2673, 2674, 2675, 26

THESE RESULTS HAVE BEEN VERIFIED BY OTHER RESEARCHERS. IN THE
 1970S, FOR EXAMPLE, A STUDY CONDUCTED BY THE UNIVERSITY OF CALIFORNIA
 REPORTED THAT 80% OF THE STUDENTS WHO TOOK THE
 THE STANDARDIZED TESTS IN THE STATE OF CALIFORNIA HAD TAKEN THE
 COURSE OF STUDY IN THE STATE OF CALIFORNIA.

For the purpose of this study, the following hypotheses were tested:

1. The perceived *value* of the service will be positively related to the perceived *quality* of the service.
2. The perceived *value* of the service will be positively related to the perceived *cost* of the service.
3. The perceived *value* of the service will be positively related to the perceived *benefit* of the service.
4. The perceived *value* of the service will be positively related to the perceived *convenience* of the service.
5. The perceived *value* of the service will be positively related to the perceived *reliability* of the service.
6. The perceived *value* of the service will be positively related to the perceived *security* of the service.
7. The perceived *value* of the service will be positively related to the perceived *privacy* of the service.
8. The perceived *value* of the service will be positively related to the perceived *flexibility* of the service.
9. The perceived *value* of the service will be positively related to the perceived *customization* of the service.
10. The perceived *value* of the service will be positively related to the perceived *innovation* of the service.
11. The perceived *value* of the service will be positively related to the perceived *social interaction* of the service.
12. The perceived *value* of the service will be positively related to the perceived *community* of the service.
13. The perceived *value* of the service will be positively related to the perceived *support* of the service.
14. The perceived *value* of the service will be positively related to the perceived *information* of the service.
15. The perceived *value* of the service will be positively related to the perceived *entertainment* of the service.
16. The perceived *value* of the service will be positively related to the perceived *education* of the service.
17. The perceived *value* of the service will be positively related to the perceived *health* of the service.
18. The perceived *value* of the service will be positively related to the perceived *well-being* of the service.
19. The perceived *value* of the service will be positively related to the perceived *happiness* of the service.
20. The perceived *value* of the service will be positively related to the perceived *life satisfaction* of the service.

I'm beginning to know the other characters a little more and to understand their relationships with each other. How important is this stuff I'm learning about them?

It's important because it helps you understand the story better. It's like a puzzle. You have to put all the pieces together to see the whole picture.

I don't know who I can trust and who I can't!

That's a good question. In this story, everyone has secrets. You have to be careful who you tell what. Sometimes the people you think you can trust are the ones who are most dangerous.

I found some crackers. Are these for the parrot?

Crackers? For the parrot? That's interesting. Maybe the parrot is hungry. But you should be careful. The parrot might be a spy for one of the bad guys.

Is there a clue in the sheet music I found?

Sheet music? That's a clue. It might be a message. You should look at it carefully. Maybe it has a hidden meaning.

I finally made it into the cellar, but didn't see anything special.

The cellar is a dangerous place. You should be careful. There might be something there, but you have to be smart. Don't let anyone see you.

Act III

I think something terrible has happened to Wilbur! Am I right?!

Yes, something terrible has happened to Wilbur. You have to find out what it is. It's a big mystery. You have to be careful.

What do I do with the monocle?

The monocle is a clue. It might be important. You should keep it safe. Maybe it belongs to one of the bad guys.

What's so important about Wilbur's reading a racehorse magazine?

Wilbur's reading a racehorse magazine? That's interesting. Maybe he's interested in horses. Or maybe it's a clue.

I took the fireplace poker but don't know what to do with it? Should I use it as a weapon?

The fireplace poker is a weapon. You should be careful. It might be important. You should keep it safe.

Everybody seems to have a motive to kill somebody else! How will I EVER sort out the real truth?

That's a big question. You have to be smart. You have to find out who is lying and who is telling the truth. It's a big puzzle.

I noticed Lillian in the playhouse. She was acting REAL strange with some dolls!

What did she do with the dolls? Did she hurt them?
Did she throw them out the window?
Did she take them to the bathroom?
Did she take them to the kitchen?
Did she take them to the bedroom?

I have seen Rudy accosting Fifi a couple of times. Should I take note of this?

What should I do if I see him again?
Should I tell the Colonel?
Should I tell the Major?
Should I tell the Captain?
Should I tell the Lieutenant?
Should I tell the Sergeant?

I found a cane in a secret passage. I think the Colonel is sneaking around! Am I right?

What should I do with the cane?
Should I keep it?
Should I throw it away?
Should I give it to the Colonel?
Should I give it to the Major?
Should I give it to the Captain?

I think I found something that belongs to Celie. What should I do with it?

What should I do with the thing?
Should I keep it?
Should I throw it away?
Should I give it to Celie?
Should I give it to the Colonel?

What do I do with the ring I found in the bowl of fruit?

What should I do with the ring?
Should I keep it?
Should I throw it away?
Should I give it to the Colonel?
Should I give it to the Major?

Celie's in her house now, but she won't let me in! How can I enter her house?

What can I do to get in?
Should I knock?
Should I call?
Should I wait?
Should I go in?

I want to look in the doghouse but the dog's in the way! How do I get him out of there?

What can I do to get the dog out?
Should I call?
Should I wait?
Should I go in?
Should I throw a stick?

Ethel's such an awful drunk! Can, or should, I do anything for her?

What should I do for Ethel?
Should I give her a drink?
Should I call a doctor?
Should I wait?

Act IV

What can I do with Gloria's body?

What should I do with Gloria's body?
Should I keep it?
Should I throw it away?
Should I give it to the Colonel?
Should I give it to the Major?

the 1990s, the number of people who have been infected with HIV has increased in almost every country in the world. In the United States, the number of people living with HIV has increased from 100,000 in 1985 to 1,000,000 in 2000. In the United Kingdom, the number of people living with HIV has increased from 10,000 in 1985 to 100,000 in 2000. In the United States, the number of people who have died from AIDS has increased from 10,000 in 1985 to 100,000 in 2000. In the United Kingdom, the number of people who have died from AIDS has increased from 1,000 in 1985 to 10,000 in 2000. In the United States, the number of people who have been infected with HIV has increased from 100,000 in 1985 to 1,000,000 in 2000. In the United Kingdom, the number of people who have been infected with HIV has increased from 10,000 in 1985 to 100,000 in 2000. In the United States, the number of people who have died from AIDS has increased from 10,000 in 1985 to 100,000 in 2000. In the United Kingdom, the number of people who have died from AIDS has increased from 1,000 in 1985 to 10,000 in 2000.

[illegible]

THESE POINTS OF CONTACT, WHICH ARE THE MAINSTAYS OF THE POLYMERIZATION, BEING IN CONTACT WITH THE POLYMER, THERE IS A DIRECT CONTACT OF THE POLYMER WITH THE POLYMERIZATION POINTS, WHICH IS THE MAINSTAY OF THE POLYMERIZATION.

over a long time, and the results are not always consistent. For example, a study by the University of Michigan found that people who are more socially connected are more likely to be healthy and live longer. However, other studies have found that social isolation can lead to better health outcomes in some cases, such as when it leads to a more focused and disciplined lifestyle.

1993, 1994, 1995, 1996, 1997, 1998, 1999, 2000, 2001, 2002, 2003, 2004, 2005, 2006, 2007, 2008, 2009, 2010, 2011, 2012, 2013, 2014, 2015, 2016, 2017, 2018, 2019, 2020, 2021, 2022, 2023, 2024, 2025, 2026, 2027, 2028, 2029, 2030, 2031, 2032, 2033, 2034, 2035, 2036, 2037, 2038, 2039, 2040, 2041, 2042, 2043, 2044, 2045, 2046, 2047, 2048, 2049, 2050, 2051, 2052, 2053, 2054, 2055, 2056, 2057, 2058, 2059, 2060, 2061, 2062, 2063, 2064, 2065, 2066, 2067, 2068, 2069, 2070, 2071, 2072, 2073, 2074, 2075, 2076, 2077, 2078, 2079, 2080, 2081, 2082, 2083, 2084, 2085, 2086, 2087, 2088, 2089, 2090, 2091, 2092, 2093, 2094, 2095, 2096, 2097, 2098, 2099, 2100, 2101, 2102, 2103, 2104, 2105, 2106, 2107, 2108, 2109, 2110, 2111, 2112, 2113, 2114, 2115, 2116, 2117, 2118, 2119, 2120, 2121, 2122, 2123, 2124, 2125, 2126, 2127, 2128, 2129, 2130, 2131, 2132, 2133, 2134, 2135, 2136, 2137, 2138, 2139, 2140, 2141, 2142, 2143, 2144, 2145, 2146, 2147, 2148, 2149, 2150, 2151, 2152, 2153, 2154, 2155, 2156, 2157, 2158, 2159, 2160, 2161, 2162, 2163, 2164, 2165, 2166, 2167, 2168, 2169, 2170, 2171, 2172, 2173, 2174, 2175, 2176, 2177, 2178, 2179, 2180, 2181, 2182, 2183, 2184, 2185, 2186, 2187, 2188, 2189, 2190, 2191, 2192, 2193, 2194, 2195, 2196, 2197, 2198, 2199, 2200, 2201, 2202, 2203, 2204, 2205, 2206, 2207, 2208, 2209, 2210, 2211, 2212, 2213, 2214, 2215, 2216, 2217, 2218, 2219, 2220, 2221, 2222, 2223, 2224, 2225, 2226, 2227, 2228, 2229, 2230, 2231, 2232, 2233, 2234, 2235, 2236, 2237, 2238, 2239, 2240, 2241, 2242, 2243, 2244, 2245, 2246, 2247, 2248, 2249, 2250, 2251, 2252, 2253, 2254, 2255, 2256, 2257, 2258, 2259, 2260, 2261, 2262, 2263, 2264, 2265, 2266, 2267, 2268, 2269, 2270, 2271, 2272, 2273, 2274, 2275, 2276, 2277, 2278, 2279, 2280, 2281, 2282, 2283, 2284, 2285, 2286, 2287, 2288, 2289, 2290, 2291, 2292, 2293, 2294, 2295, 2296, 2297, 2298, 2299, 2300, 2301, 2302, 2303, 2304, 2305, 2306, 2307, 2308, 2309, 2310, 2311, 2312, 2313, 2314, 2315, 2316, 2317, 2318, 2319, 2320, 2321, 2322, 2323, 2324, 2325, 2326, 2327, 2328, 2329, 2330, 2331, 2332, 2333, 2334, 2335, 2336, 2337, 2338, 2339, 2340, 2341, 2342, 2343, 2344, 2345, 2346, 2347, 2348, 2349, 2350, 2351, 2352, 2353, 2354, 2355, 2356, 2357, 2358, 2359, 2360, 2361, 2362, 2363, 2364, 2365, 2366, 2367, 2368, 2369, 2370, 2371, 2372, 2373, 2374, 2375, 2376, 2377, 2378, 2379, 2380, 2381, 2382, 2383, 2384, 2385, 2386, 2387, 2388, 2389, 2390, 2391, 2392, 2393, 2394, 2395, 2396, 2397, 2398, 2399, 2400, 2401, 2402, 2403, 2404, 2405, 2406, 2407, 2408, 2409, 2410, 2411, 2412, 2413, 2414, 2415, 2416, 2417, 2418, 2419, 2420, 2421, 2422, 2423, 2424, 2425, 2426, 2427, 2428, 2429, 2430, 2431, 2432, 2433, 2434, 2435, 2436, 2437, 2438, 2439, 2440, 2441, 2442, 2443, 2444, 2445, 2446, 2447, 2448, 2449, 2450, 2451, 2452, 2453, 2454, 2455, 2456, 2457, 2458, 2459, 2460, 2461, 2462, 2463, 2464, 2465, 2466, 2467, 2468, 2469, 2470, 2471, 2472, 2473, 2474, 2475, 2476, 2477, 2478, 2479, 2480, 2481, 2482, 2483, 2484, 2485, 2486, 2487, 2488, 2489, 2490, 2491, 2492, 2493, 2494, 2495, 2496, 2497, 2498, 2499, 2500, 2501, 2502, 2503, 2504, 2505, 2506, 2507, 2508, 2509, 2510, 2511, 2512, 2513, 2514, 2515, 2516, 2517, 2518, 2519, 2520, 2521, 2522, 2523, 2524, 2525, 2526, 2527, 2528, 2529, 2530, 2531, 2532, 2533, 2534, 2535, 2536, 2537, 2538, 2539, 2540, 2541, 2542, 2543, 2544, 2545, 2546, 2547, 2548, 2549, 2550, 2551, 2552, 2553, 2554, 2555, 2556, 2557, 2558, 2559, 2560, 2561, 2562, 2563, 2564, 2565, 2566, 2567, 2568, 2569, 2570, 2571, 2572, 2573, 2574, 2575, 2576, 2577, 2578, 2579, 2580, 2581, 2582, 2583, 2584, 2585, 2586, 2587, 2588, 2589, 2590, 2591, 2592, 2593, 2594, 2595, 2596, 2597, 2598, 2599, 2600, 2601, 2602, 2603, 2604, 2605, 2606, 2607, 2608, 2609, 2610, 2611, 2612, 2613, 2614, 2615, 2616, 2617, 2618, 2619, 2620, 2621, 2622, 2623, 2624, 2625, 2626, 2627, 2628, 2629, 2630, 2631, 2632, 2633, 2634, 2635, 2636, 2637, 2638, 2639, 2640, 2641, 2642, 2643, 2644, 2645, 2646, 2647, 2648, 2649, 2650, 2651, 2652, 2653, 2654, 2655, 2656, 2657, 2658, 2659, 2660, 2661, 2662, 2663, 2664, 2665, 2666, 2667, 2668, 2669, 2670, 2671, 2672, 2673, 2674, 26

© 2006 The Authors
Journal compilation © 2006 Blackwell Publishing Ltd

For the purpose of this study, the following hypotheses were formulated:

1. The frequency of mobile phone use is positively related to the frequency of mobile phone use.
2. The frequency of mobile phone use is positively related to the frequency of mobile phone use.
3. The frequency of mobile phone use is positively related to the frequency of mobile phone use.
4. The frequency of mobile phone use is positively related to the frequency of mobile phone use.
5. The frequency of mobile phone use is positively related to the frequency of mobile phone use.

Wardle, J. and R. J. Richardson, 2001. A review of the seaweed industry in New Zealand, with particular reference to the *Ulva* industry. *Journal of Applied Phycology* 15: 293-304.

It would be a good idea to have a "What's New" section on the website, and to make it easy for visitors to find. This could be a link to a page that lists all the new products, or a link to a page that lists all the new services. This would be a good idea to have, as it would be a good way to keep visitors up to date on the latest news.

The matches with 50 mO₂ increased the body size of the larvae (table 1).

These numbers you can find on H&M's site.

Just kidding! Do you think the nothing you would be a murder weapon? There is a way to know for sure.

Look at the quality description with the numbers. Do you ask anything more? No. Do you think there could be a link between the number in the title and the quality description?

Picture it again a time when you THINK you see the "knowing" character clearly. At that time, you still will not know for sure if he is the (2) the standard character. It will take until the very end of the game that you will know.

It's not like you're there, and the gods are everywhere. You cannot see anyone at the end of the very end of the game. At that point, it's possible for you to have been pushed (or pulled) into something to notice.

I found a dead body hanging from a tree! Should I just leave it alone?

What is the importance of the smell of perfume in the secret passage? Now I'm really confused about who may be using them besides myself!

What is the importance of the smell of perfume in the secret passage? Now I'm really confused about who may be using them besides myself!

What is the importance of the smell of perfume in the secret passage? Now I'm really confused about who may be using them besides myself!

Act VI

Oh, dear! Now Jeeves and Fifi have been murdered! Is there anything I can do with their bodies?

There aren't many people left alive! Obviously, one of them is the killer but I'm STILL confused!

What is the importance of the smell of perfume in the secret passage? Now I'm really confused about who may be using them besides myself!

I think someone's trying to scare me with this halloween mask! What should I do about it?!

What is the importance of the smell of perfume in the secret passage? Now I'm really confused about who may be using them besides myself!

Is there a pattern with the Colonel's disappearances from his room? Should I be suspicious about this?

What is the importance of the smell of perfume in the secret passage? Now I'm really confused about who may be using them besides myself!

I'm confused about how Jeeves and Fifi died. It appears that they were poisoned but I have no proof!

What is the importance of the smell of perfume in the secret passage? Now I'm really confused about who may be using them besides myself!

By using the monocle I have been able to see fingerprints on various objects. How do I know whose prints they are, and will this knowledge lead me to the killer?

Copyright © 2004 by John Wiley & Sons, Inc.

There are two main reasons why the *in vitro* studies have not been able to establish the role of the different subunits. First, the *in vitro* studies have been done with purified subunits, and it is not clear how these subunits behave in the presence of the other subunits. Second, the *in vitro* studies have been done with purified subunits, and it is not clear how these subunits behave in the presence of the other subunits.

There are a number of reasons why the authors of the present study might have found a significant association between the use of the Internet and the use of the Internet for social networking. First, the sample was relatively young, and young people are more likely to use the Internet for social networking. Second, the sample was relatively small, and small samples are more likely to show significant results. Third, the study was cross-sectional, and cross-sectional studies are more likely to show significant results. Finally, the study was conducted in a convenience sample, and convenience samples are more likely to show significant results.

I think there's something important in Lillian's suitcase! How can I open it?

Expenditures will be made by a grantor for another

There will not be less to report if you do not do it. You will not be able to do it.

During the research, an interview schedule is applied that is structured and unstructured. The interview schedule is prepared in the form of a questionnaire.

I see a big map on the wall. Is there a clue on it?

2002, 2003, 2004, 2005, 2006, 2007, 2008, 2009, 2010, 2011, 2012, 2013, 2014, 2015, 2016, 2017, 2018, 2019, 2020, 2021, 2022, 2023, 2024, 2025, 2026, 2027, 2028, 2029, 2030, 2031, 2032, 2033, 2034, 2035, 2036, 2037, 2038, 2039, 2040, 2041, 2042, 2043, 2044, 2045, 2046, 2047, 2048, 2049, 2050, 2051, 2052, 2053, 2054, 2055, 2056, 2057, 2058, 2059, 2060, 2061, 2062, 2063, 2064, 2065, 2066, 2067, 2068, 2069, 2070, 2071, 2072, 2073, 2074, 2075, 2076, 2077, 2078, 2079, 2080, 2081, 2082, 2083, 2084, 2085, 2086, 2087, 2088, 2089, 2090, 2091, 2092, 2093, 2094, 2095, 2096, 2097, 2098, 2099, 2100, 2101, 2102, 2103, 2104, 2105, 2106, 2107, 2108, 2109, 2110, 2111, 2112, 2113, 2114, 2115, 2116, 2117, 2118, 2119, 2120, 2121, 2122, 2123, 2124, 2125, 2126, 2127, 2128, 2129, 2130, 2131, 2132, 2133, 2134, 2135, 2136, 2137, 2138, 2139, 2140, 2141, 2142, 2143, 2144, 2145, 2146, 2147, 2148, 2149, 2150, 2151, 2152, 2153, 2154, 2155, 2156, 2157, 2158, 2159, 2160, 2161, 2162, 2163, 2164, 2165, 2166, 2167, 2168, 2169, 2170, 2171, 2172, 2173, 2174, 2175, 2176, 2177, 2178, 2179, 2180, 2181, 2182, 2183, 2184, 2185, 2186, 2187, 2188, 2189, 2190, 2191, 2192, 2193, 2194, 2195, 2196, 2197, 2198, 2199, 2200, 2201, 2202, 2203, 2204, 2205, 2206, 2207, 2208, 2209, 2210, 2211, 2212, 2213, 2214, 2215, 2216, 2217, 2218, 2219, 2220, 2221, 2222, 2223, 2224, 2225, 2226, 2227, 2228, 2229, 2230, 2231, 2232, 2233, 2234, 2235, 2236, 2237, 2238, 2239, 2240, 2241, 2242, 2243, 2244, 2245, 2246, 2247, 2248, 2249, 2250, 2251, 2252, 2253, 2254, 2255, 2256, 2257, 2258, 2259, 2260, 2261, 2262, 2263, 2264, 2265, 2266, 2267, 2268, 2269, 2270, 2271, 2272, 2273, 2274, 2275, 2276, 2277, 2278, 2279, 2280, 2281, 2282, 2283, 2284, 2285, 2286, 2287, 2288, 2289, 2290, 2291, 2292, 2293, 2294, 2295, 2296, 2297, 2298, 2299, 2300, 2301, 2302, 2303, 2304, 2305, 2306, 2307, 2308, 2309, 2310, 2311, 2312, 2313, 2314, 2315, 2316, 2317, 2318, 2319, 2320, 2321, 2322, 2323, 2324, 2325, 2326, 2327, 2328, 2329, 2330, 2331, 2332, 2333, 2334, 2335, 2336, 2337, 2338, 2339, 2340, 2341, 2342, 2343, 2344, 2345, 2346, 2347, 2348, 2349, 2350, 2351, 2352, 2353, 2354, 2355, 2356, 2357, 2358, 2359, 2360, 2361, 2362, 2363, 2364, 2365, 2366, 2367, 2368, 2369, 2370, 2371, 2372, 2373, 2374, 2375, 2376, 2377, 2378, 2379, 2380, 2381, 2382, 2383, 2384, 2385, 2386, 2387, 2388, 2389, 2390, 2391, 2392, 2393, 2394, 2395, 2396, 2397, 2398, 2399, 2400, 2401, 2402, 2403, 2404, 2405, 2406, 2407, 2408, 2409, 2410, 2411, 2412, 2413, 2414, 2415, 2416, 2417, 2418, 2419, 2420, 2421, 2422, 2423, 2424, 2425, 2426, 2427, 2428, 2429, 2430, 2431, 2432, 2433, 2434, 2435, 2436, 2437, 2438, 2439, 2440, 2441, 2442, 2443, 2444, 2445, 2446, 2447, 2448, 2449, 2450, 2451, 2452, 2453, 2454, 2455, 2456, 2457, 2458, 2459, 2460, 2461, 2462, 2463, 2464, 2465, 2466, 2467, 2468, 2469, 2470, 2471, 2472, 2473, 2474, 2475, 2476, 2477, 2478, 2479, 2480, 2481, 2482, 2483, 2484, 2485, 2486, 2487, 2488, 2489, 2490, 2491, 2492, 2493, 2494, 2495, 2496, 2497, 2498, 2499, 2500, 2501, 2502, 2503, 2504, 2505, 2506, 2507, 2508, 2509, 2510, 2511, 2512, 2513, 2514, 2515, 2516, 2517, 2518, 2519, 2520, 2521, 2522, 2523, 2524, 2525, 2526, 2527, 2528, 2529, 2530, 2531, 2532, 2533, 2534, 2535, 2536, 2537, 2538, 2539, 2540, 2541, 2542, 2543, 2544, 2545, 2546, 2547, 2548, 2549, 2550, 2551, 2552, 2553, 2554, 2555, 2556, 2557, 2558, 2559, 2560, 2561, 2562, 2563, 2564, 2565, 2566, 2567, 2568, 2569, 2570, 2571, 2572, 2573, 2574, 2575, 2576, 2577, 2578, 2579, 2580, 2581, 2582, 2583, 2584, 2585, 2586, 2587, 2588, 2589, 2590, 2591, 2592, 2593, 2594, 2595, 2596, 2597, 2598, 2599, 2600, 2601, 2602, 2603, 2604, 2605, 2606, 2607, 2608, 2609, 2610, 2611, 2612, 2613, 2614, 2615, 2616, 2617, 2618, 2619, 2620, 2621, 2622, 2623, 2624, 2625, 2626, 2627, 2628, 2629, 2630, 2631, 2632, 2633, 2634, 2635, 2636, 2637, 2638, 2639, 2640, 2641, 2642, 2643, 2644, 2645, 2646, 2647, 2648, 2649, 2650, 2651, 2652, 2653, 2654, 2655, 2656, 2657, 2658, 2659, 2660, 2661, 2662, 2663, 2664, 2665, 2666, 2667, 2668, 2669, 2670, 2671, 2672, 2673, 2674, 2675, 2676, 2677, 2678, 2679, 2680, 2681, 2682, 2683, 26

I don't even think there's a map

That's right. You are better off dead.

What's the Deal?

Celie won't talk to me anymore! I thought she liked me! Did I do something wrong?

400. 500. 300. 200. 100. 0

I don't think she buys **ANYTHING** at this point, even real

Quo'vante about Cedar at his death, and you're about to reveal it.

I think there's something missing from the weapons cabinet! Am I right?

There is still the possibility, however, that the sales tax is of the wrong type in the various states. If that is the case, you should know which one is best.

Q. And you didn't take hold of the weapon in the weapon cabinet, did you, did you not touch the weapon cabinet?

Act VII

Oh, no!! Now it's Clarence's turn to die! Should I do anything with his body?

See for: You might find something you like

You can find something you need on us both.

There are a lot of ways to get a good deal on a car.

And speaking of dead bodies...where are they going?

It's important to be strong in what you do best at. When do they go after you? In your strengths OR in your weaknesses? (When do they go after you?)

So why you talked me into it? They are all hidden in the same place.

“You want to know more?” Here, indeed, there is no hush in the hallways. “Come on, make you know!”

A black cat crossed my path! Does that mean I may be the next victim?

Yes, it's not surprising. It's you.

“Come, I told you I was just a black cat set on this island,” I told people who were laughing.

Apple, Google, Microsoft, and Amazon are the

to answer, but are in cahoots, you reading these life questions? Well, you can go back to the answer!

I think I know who the murderer is! Give me a clue to let me know if I'm right!

It's not Lillian. It's not the man. That means the murderer is in the study.

Oh yes, it's not Lillian. It's not the man. It's not the murderer. That's not the clue I need.

ACOSTA: Really?

Always there. Always use little words. Little words are powerful.

The derringer is missing from the study! Who took it?

That's a clue. Who's the murderer?

Actually it isn't. The very long before you let me know who took it.

It's not the man. It's not the woman. It's not the murderer. That's not the clue I need.

Oh yes, it's not the man. It's not the woman. It's not the murderer. That's not the clue I need.

Is Lillian's diary as incriminating for her as it seems?

It's not the man.

Oh yes, it's not the man. It's not the woman. It's not the murderer.

The diary is not the clue. The clue is the information that Lillian was killed. The clue is the clue. The clue is the clue. The clue is the clue. The clue is the clue.

Act VIII

I'm really confused! Now LILLIAN'S dead!! What's going on around here?!

A clue is a clue. A clue is a clue. A clue is a clue. A clue is a clue. A clue is a clue.

It's not the man. It's not the woman. It's not the murderer. That's not the clue I need.

That's a clue. It's not the man. It's not the woman. It's not the murderer. That's not the clue I need.

What's with the disguise Lillian's wearing?

The disguise is a clue. A clue is a clue. A clue is a clue. A clue is a clue. A clue is a clue.

Oh yes, it's not the man. It's not the woman. It's not the murderer. That's not the clue I need.

I found the derringer near Lillian's body but it's not loaded! Are there any bullets anywhere?

That's a clue. A clue is a clue. A clue is a clue. A clue is a clue. A clue is a clue.

Oh yes, it's not the man. It's not the woman. It's not the murderer. That's not the clue I need.

I found all the dead bodies in the basement! Where do I go from here? Is there anything I can do in the basement?

Oh yes, it's not the man. It's not the woman. It's not the murderer. That's not the clue I need.

That's a clue. A clue is a clue. A clue is a clue. A clue is a clue. A clue is a clue.

Oh yes, it's not the man. It's not the woman. It's not the murderer. That's not the clue I need.

That's a clue. A clue is a clue. A clue is a clue. A clue is a clue. A clue is a clue.

I found myself inside a tomb where I see some vaults in the walls! I want to open the vaults, but I can't! Help!

That's a clue. A clue is a clue. A clue is a clue. A clue is a clue. A clue is a clue.

Oh yes, it's not the man. It's not the woman. It's not the murderer. That's not the clue I need.

That's a clue. A clue is a clue. A clue is a clue. A clue is a clue. A clue is a clue.

What is the meaning of the message written on the parlor wall?

Oh yes, it's not the man. It's not the woman. It's not the murderer. That's not the clue I need.

That's a clue. A clue is a clue. A clue is a clue. A clue is a clue. A clue is a clue.

Oh yes, it's not the man. It's not the woman. It's not the murderer. That's not the clue I need.

I see a struggle going on between Rudy and the Colonel in the attic! I feel that one of them is a guilty party, but I don't know who! What should I do?!

How did I find the COLONEL'S ROOM?

How did I find the COLONEL'S ROOM? (pg. 277) How did I find it?

How did I find the COLONEL'S ROOM? (pg. 277) How did I find it?

The Colonel died at the end of the game and Rudy told me "the whole story." How do I know that he's telling me the truth?

What did I find?

How did I find the COLONEL'S ROOM? (pg. 277) How did I find it?

How did I find the COLONEL'S ROOM? (pg. 277) How did I find it?

Rudy got wounded at the end of the game and the Colonel told me "the whole story." How do I know that he's telling me the truth?

How did I find the COLONEL'S ROOM? (pg. 277) How did I find it?

How did I find the COLONEL'S ROOM? (pg. 277) How did I find it?

I never did find the treasure! Where is it?

How did I find the COLONEL'S ROOM?

How did I find the COLONEL'S ROOM?

How did I find the COLONEL'S ROOM? (pg. 277) How did I find it?

After the End of the Game

CAUTION: Do not read this section until you have actually solved the game and seen the very end. Reading this section too soon will spoil the game for you if you have not completed it on your own.

Did you...

Remember to find the COLONEL'S ROOM?

How did I find the COLONEL'S ROOM?

How did I find the COLONEL'S ROOM? (pg. 277) How did I find it?

How did I find the COLONEL'S ROOM? (pg. 277) How did I find it?

How did I find the COLONEL'S ROOM? (pg. 277) How did I find it?

How did I find the COLONEL'S ROOM?

How did I find the COLONEL'S ROOM?

How did I find the COLONEL'S ROOM?

How did I find the COLONEL'S ROOM?

How did I find the COLONEL'S ROOM?

How did I find the COLONEL'S ROOM?

How did I find the COLONEL'S ROOM?

How did I find the COLONEL'S ROOM?

How did I find the COLONEL'S ROOM?

How did I find the COLONEL'S ROOM?

How did I find the COLONEL'S ROOM?

How did I find the COLONEL'S ROOM?

How did I find the COLONEL'S ROOM?

How did I find the COLONEL'S ROOM?

How did I find the COLONEL'S ROOM?

How did I find the COLONEL'S ROOM?

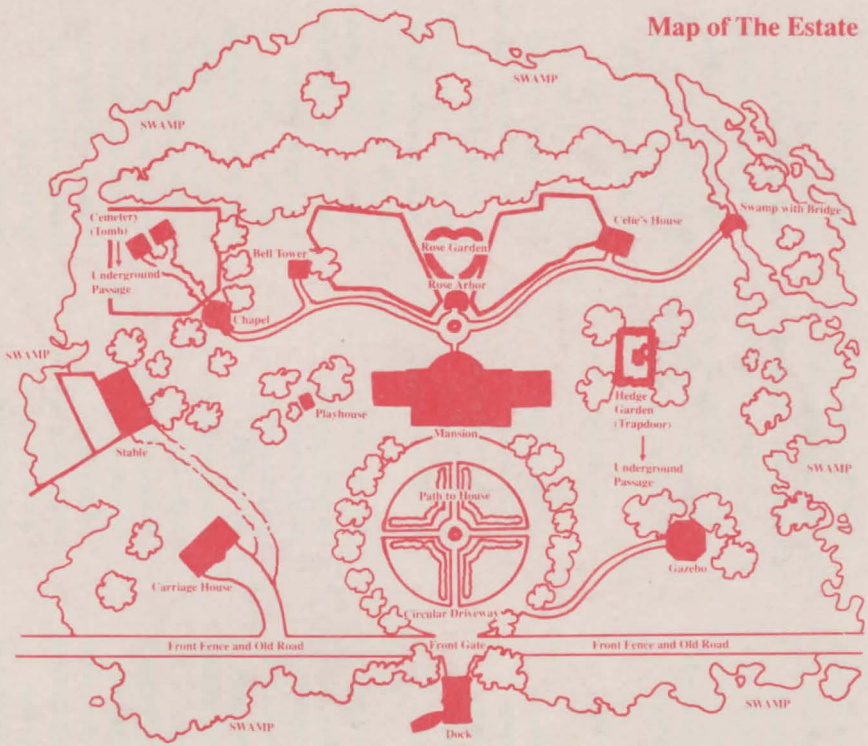
How did I find the COLONEL'S ROOM?

How did I find the COLONEL'S ROOM?

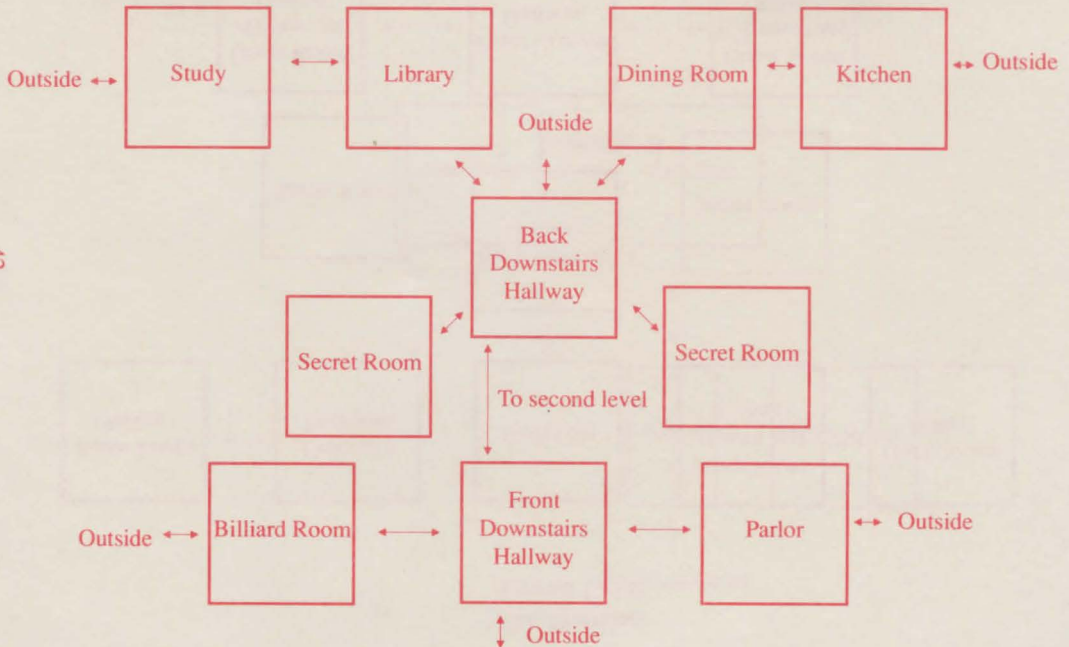
How did I find the COLONEL'S ROOM?

How did I find the COLONEL'S ROOM?

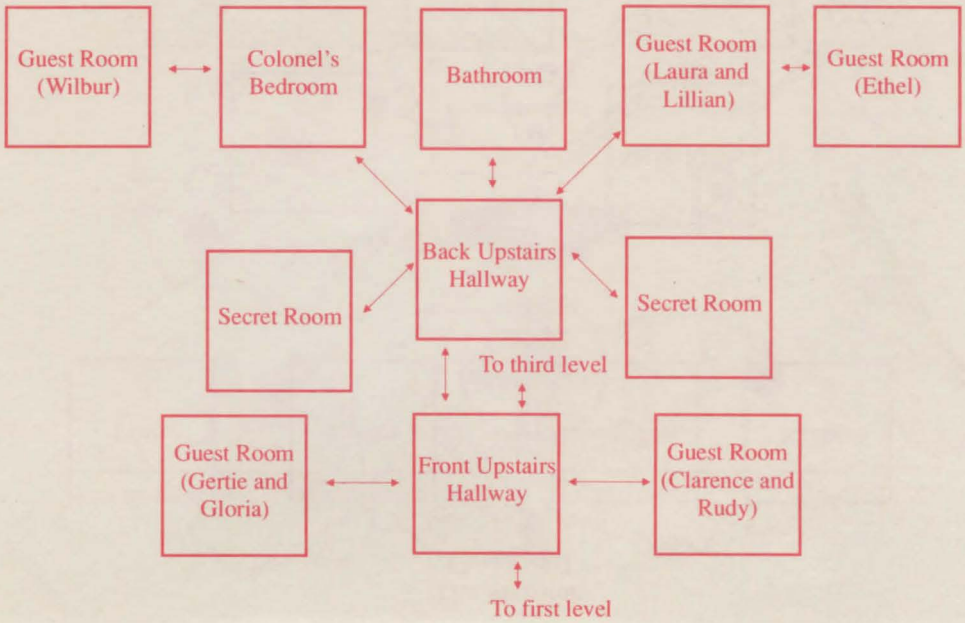
Map of The Estate



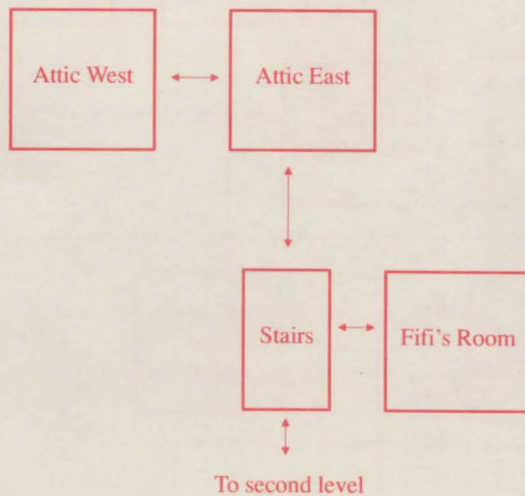
The Mansion First Level

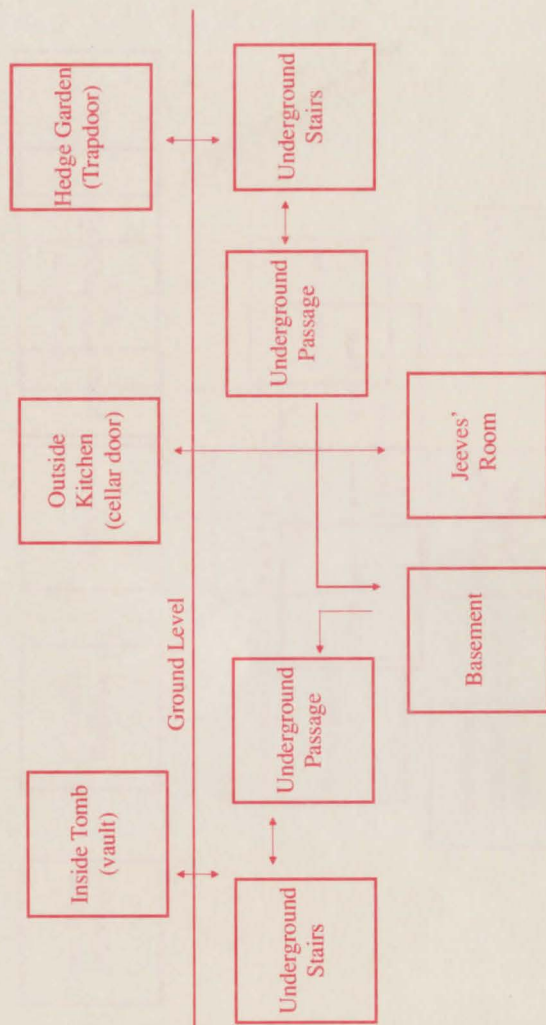


The Mansion Second Level



The Mansion Third Level





HINT BOOK ORDER FORM

	PRICE	TOTAL
King's Quest I	7.95	
King's Quest II	7.95	
King's Quest III	7.95	
King's Quest IV	7.95	
Space Quest I	7.95	
Space Quest II	7.95	
Space Quest III	7.95	
Leisure Suit Larry I	7.95	
Leisure Suit Larry II	7.95	
Leisure Suit Larry III	7.95	
Police Quest I	7.95	
Police Quest II	7.95	
Manhunter I	7.95	
Manhunter II	7.95	
Code Name: Iceman	7.95	
Gold Rush!	7.95	
Colonel's Bequest	7.95	
Hero's Quest	7.95	
Conquests of Camelot	7.95	
The Black Cauldron	7.95	

Subtotal

California residents add 6% sales tax
Massachusetts residents add 5% sales tax

Total

(Please print)

Name _____

Address _____

City/State/Zip code _____

Phone () _____

Check method of payment (*please do not send cash*)☐ MasterCard ☐ Visa ☐ Check enclosed ☐ American Express

Card number _____

Expiration date ____/____

Authorizing signature _____

Please allow two weeks for delivery. All prices include shipping and handling. Make checks payable to Sierra On-Line, Inc. Mail payment with this order form to: Hint Books, Sierra On-Line, Inc., P.O. Box 485, Coursegold, CA 93614.



SIERRA ON-LINE, INC. • COARSEGOLD, CA 93614 • (209) 683-8989

TM designates trademark of Sierra On-Line, Inc. ® is a registered trademark of Sierra On-Line, Inc.
© 1989 Sierra On-Line, Inc. Printed in the U.S.A.

003351800