

PLAYGUIDE



ULTIMA ONLINE
renaissance™

Warning: To Owners of Projection Televisions

Still pictures or images may cause permanent picture-tube damage or mark the phosphor of the CRT. Avoid repeated or extended use of video games on large-screen projection televisions.

Epilepsy Warning

Please read before using this game or allowing your children to use it.

Some people are susceptible to epileptic seizures or loss of consciousness when exposed to certain flashing lights or light patterns in everyday life.

Such people may have a seizure while watching television images or playing certain video games. This may happen even if the person has no medical history of epilepsy or has never had any epileptic seizures.

If you or anyone in your family has ever had symptoms related to epilepsy (seizures or loss of consciousness) when exposed to flashing lights, consult your doctor prior to playing.

We advise that parents should monitor the use of video games by their children. If you or your child experience any of the following symptoms: dizziness, blurred vision, eye or muscle twitches, loss of consciousness, disorientation, any involuntary movement or convulsion, while playing a video game, discontinue use IMMEDIATELY and consult your doctor.

Precautions to Take During Use

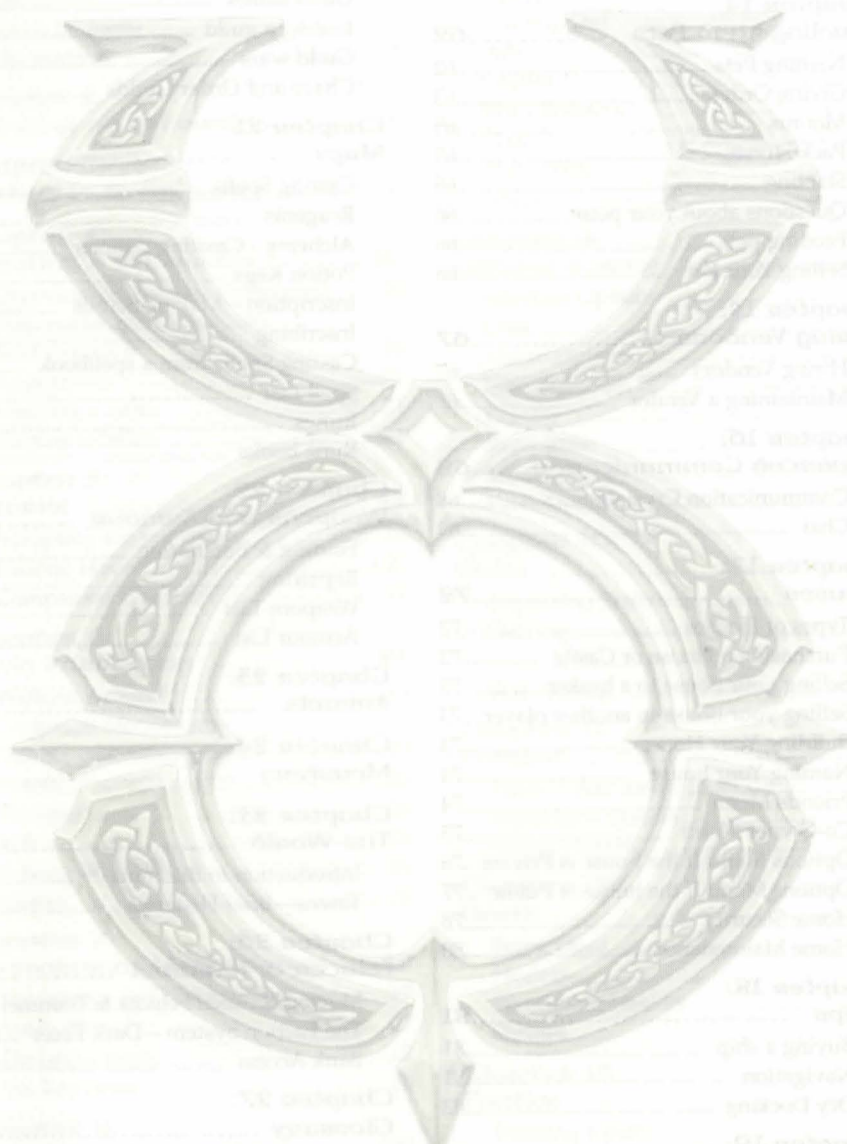
- Do not stand too close to the screen. Sit a good distance away from the screen, as far away as the length of the cable allows.
- Preferably play the game on a small screen.
- Avoid playing if you are tired or have not had much sleep.
- Make sure that the room in which you are playing is well lit.
- Rest for at least 10 to 15 minutes per hour while playing a video game.

TABLE OF CONTENTS

Chapter 1:	
Introduction to MMRPG	5
Interaction	5
Social Etiquette	6
The Internet	7
Chapter 2:	
Creating an account	8
Chapter 3:	
Getting in to the game	9
Chapter 4:	
Creating a Character	10
Overview professions (templates)	10
Stats explanation and Skills	16
Brief overview	16
Appearance	21
Selecting a name	21
Starting location	21
Chapter 5:	
Tutorial	22
Accepting the invitation	22
Visiting Haven	22
Companion Overview	22
Chapter 6:	
Basic interaction	23
Walking Around	23
Continual Movement	23
Talking with other players	23
Emote	23
Whisper	24
Yell	24
Talking With NPCs	24
Money	26
Chapter 7:	
Environment Manipulation	27
Identifying and Picking Up Items	27
Using Items	27
Dropping Items	27
Stacked Items	28
Chapter 8:	
The character window	29
Name	29
Clothing/Armour/Weapons	29
Backpack	29
Profile	30
Options	30
Logging Out	30
Help	31
Journal	31
Skills Window	31
Chat	32
Peace/War	32
Status	32
Chapter 9:	
Options screen	33
Interface Options	33
Chat	36
Macro Options	37
Interface	40
Display	40
Reputation	41
Miscellaneous	42
Filter Options	42
Chapter 10:	
Skills	43
Improving Skills	43
Skill cap	51
.....	51
Skill locking	52
Chapter 11:	
Combat	53
Peace / War mode	53
Reputation System	53
Versus Players	55
Chapter 12:	
Death	58
Being Dead	58
Healers	59
Wandering Healers	59
Shrines	59
Chapter 13:	
Parties	60
Forming a party	60
Leaving a party	60
Communication within the party	60
Sharing Fame and Karma	60

TABLE OF CONTENTS

Spells	61
Looting	61
Chapter 14:	
Hirelings and Pets	62
Naming Pets	62
Giving Orders	63
Mounts	65
Pack Horses	65
Stabling	65
Questions about your pets	66
Feeding pets	66
Selling Your Pet	66
Chapter 15:	
Hiring Vendors	67
Hiring Vendors	67
Maintaining a Vendor	67
Chapter 16:	
Advanced Communication	68
Communication Crystals	68
Chat	69
Chapter 17:	
Houses	72
Types of Houses	72
Purchasing a House or Castle	72
Selling your house to a broker	72
Selling your house to another player	73
Building Your House	73
Naming Your house	74
Friends Menu	74
Co-Owner Menu	75
Options Menu If the house is Private	76
Options Menu If the house is Public	77
Home Security	78
Home Maintenance	80
Chapter 18:	
Ships	81
Buying a ship	81
Navigation	81
Dry Docking	83
Chapter 19:	
Keys	84
Chapter 20:	
Guilds	85
Guild stones	86
Joining a guild	87
Guild wars	87
Chaos and Order Guilds	88
Chapter 21:	
Magic	89
Casting Spells	89
Reagents	90
Alchemy - Creating potions	98
Potion Kegs	99
Inscription - Making Scrolls	100
Inscribing	100
Casting Spells from a spellbook	101
Spell List	101
Runes	114
Rune books	114
Chapter 22:	
Weapons and Armour	117
Finding & Purchasing	117
Repairing	117
Weapons List	117
Armour List	122
Chapter 23:	
Animals	124
Chapter 24:	
Monsters	131
Chapter 25:	
The World	147
Introduction to Britannia™	147
Towns—Brief Histories	148
Chapter 26:	
Felucca & Trammel	161
Moving between Felucca & Trammel	162
The Faction System - Dark Facet	163
Bank Access	164
Chapter 27:	
Glossary	165



This product has been rated by the Entertainment Software Rating Board. For information about the ESRB rating, or to comment about the appropriateness of the rating, please contact the ESRB at 1-800-771-3772.

CHAPTER 1: INTRODUCTION TO MMRPG

Welcome to *Ultima Online*! This manual was written to introduce you to the game. Before you try to play, it is important to understand what *Ultima Online* is. *Ultima Online* is a Massively Multiplayer Role Playing Game, or MMRPG. It is also sometimes referred to as an Online Computer Role Playing Game, or OCRPG. Acronyms aside, *Ultima Online* is made up of people from around our world who choose to enter the “world” of Britannia with you. Like any large gathering of people, *Ultima Online* has social morays which are largely determined by the community. Unlike most computer games you may be used to, *Ultima Online* does not have an obvious objective, and does not produce winners and losers. Rather, it is an alternate world where your abilities increase as you participate in it. As you gain in skill and capability, more and more of this vast world opens up to you. Along the way you will get to know a most diverse collection of people, a surprising number of whom will become genuine friends.

It is possible to play *Ultima Online* on your own and have a very rewarding experience. There are monsters to be slain, strange locales to be visited, and treasure to be had. It is the community, however, which makes *Ultima Online* special. As you venture forth in *Ultima Online* you will meet other players, many with different goals than your own. Some will have been playing longer, and some may be new. Getting to know these players as you would your neighbors will have benefits which will eventually help you reach goals you may set for yourself.

Finally, this document will try to include current information about *Ultima Online*, but it is important to note that *Ultima Online* is a dynamic world. The world is always changing and this manual will not be able to cover those future changes. It is important to visit <http://www.uo.com> for the latest changes and updates to the world.

Interaction

Interaction within *Ultima Online* means many different things: interaction with the environment, interaction with computer controlled characters (NPCs – Non-Player Characters), interaction with items, and interaction with other people. All of these will be explained in depth throughout the manual, but interaction with other players is key to understanding UO.

Ultima Online was designed to accommodate many different play styles. This freedom of design allows the community to shape their environment within the world. A person can play *Ultima Online* alone, and have a rewarding experience. Although we encourage interaction with other players, it is certainly not required. We feel, however, that interacting with the community will help you learn more about *Ultima Online* and it will broaden your goals, and perhaps give you a more rewarding experience.

Social Etiquette

As you become familiar with the basics of *Ultima Online*, it is important to remember the underlying premise of online worlds, you are not alone. Thousands of other players make up the world along with you. Just as your actions have meaning in the “real” world with the ability to affect others, so to do your actions within an online game affect those around you.

The following are some basic guidelines for etiquette within *Ultima Online*:

- When starting out, do not ask other players for gold or items. If you are short of gold, we recommend asking people how they earned gold when they were starting out. It is always okay to ask for help, it is not okay to ask for handouts.
- “Do” “not” “type” “one” “word” “and” “hit” “enter.” You can enter 80 characters while typing any phrase in UO. Try not to break up your thoughts, or you will likely be ignored.
- “DO NOT SHOUT!” Most people consider typing all in caps, sometimes called “shouting”, rude. There is not ever an appropriate time to do it, even if you are trying to emphasize a thought.
- Don’t name a character something foolish. People who see a character named “Chucky D” are less likely to help that character or even associate with them. There is no reason to give yourself a disadvantage with a name. Even if you believe the character to be a “throw away” character, put some thought into the name. You never know when you are going to run into good fortune in the game.
- Use proper greetings. While “Sup” may be completely appropriate among your friends in the game, when speaking to strangers a nice “Hello” or even a “Hail” will go a long way to improving the opinion others have of you. (And their willingness to help you.)
- Try to communicate effectively with strangers. Though we encourage roleplaying, typing “thou art a felonious knave” may not be as effective as typing “you are a thief.” It is important to make sure you are understood. You might save some of your better and more colourful language skills for groups in the game of like mind.
- Just as you don’t want to obfuscate your intent with archaic language, you also don’t want to have others ignore you because your sentences ignore basic grammar rules. Typing “Plz Help me kill this drag0n” may get your point across, but will probably also get you ignored.



The Internet

Before you begin your journey into *Ultima Online*, it is important to understand what makes an internet game unique.

Performance

While the performance of single player games rely only on the performance of the computer they are being run on, internet multi-player games also rely on the speed of the internet. Many different things can affect that speed, but it basically comes down to how fast a “packet” of information can travel between one computer to the next, and if that packet actually makes it to its destination. Basically a packet has to travel a route with a lot of stops along the way. Along this route, it may get delayed or lost in the shuffle, much like luggage visiting several different cities with plane changes each time. Each stop along the way is called a “hop.” A “hop” is basically the direct route of information flow between two routers. If any two routers are having trouble communicating with one another, it is likely your packet will be delayed or lost. The less amount of “hops” a packet has to make, the better. This is why *Ultima Online* uses a distributed network of servers. Our goal is to have a server near you, so you see greater performance gains. Although you are welcome to play on any server, you should pick the one that is closest to you for the best performance.

Security

The information your computer sends to the *Ultima Online* servers remains with the *Ultima Online* servers. Only Origin Systems has access to that information. Therefore, other players can not steal your account information through normal game play. However, as you get to know players in the game, they may ask things about you. You should be cautious with the information you give out. Many players like to use ICQ or other communication utilities. These utilities will allow other players to see your IP address unless properly configured. Although this is not necessarily a bad thing, if you have a Trojan on your system, it can be devastating. If your computer is connected to the internet certain Trojans, such as Back Orifice, allow criminals access to your computer while you are not there. All of your files, including your UO password could be available to these criminals. We urge you to read our website about internet security so you can protect your property and your account.



CHAPTER 2: CREATING AN ACCOUNT

You must create an account after you install the game. You will need to have a web browser installed on your computer and an active internet connection. Regular installation will bring up the account setup steps automatically after the game software has been installed. Account setup is a separate option under Advanced installation. In either case the steps to create an account are the same. NOTE: you must be at least 18 years old to create an account in *Ultima Online: Renaissance*.

First, the account setup software opens your web browser. If you use a dial-up internet connection, you should logon prior to running the account setup. Many browsers, however, will initiate the dial-up procedure automatically.

Once your browser displays the account registration site, select "Create an Account."

The next step is to enter your registration code. You can find this on the case that contained your *Ultima Online: Renaissance* CD.

The next screen you will see displays the terms and conditions governing accounts in the game. Accepting these conditions takes you to the next step. If you select Decline, the account setup process ends at this stage.

Next is the screen featuring the Rules of Conduct for the game. *Ultima Online: Renaissance*, by virtue of being an online game world populated by thousands of other people, has to set limits on certain extreme forms of player behavior. As is the case with the Terms Agreement, selecting **Accept** moves you onto the next step in setting up your account; selecting **Decline** ends the process.

Account Management is the next step. On the first screen you select a name and password for your account. The former must be unique. Thus it may take a few tries before you create one the system will accept. If you have your heart set on a specific user name, and you're told that it already exists, in most cases you can simply add a number to the end to get the name accepted. On the second screen we ask you to provide us with information about yourself: your name, address, email address, daytime phone number, and age.

On the next screen you select your payment plan. The first 30 days are free, regardless of whether you select a payment plan at this time or not.

The final screen is your account summary, and a link to UO HOME – the main UO Web site where you can learn of events, news, and other useful information about *Ultima Online: Renaissance*. At this point, account setup is complete. You can close your browser and finish the installation process.

CHAPTER 3: GETTING IN TO THE GAME

To start *Ultima Online: Renaissance*, select start/programs/ultima online from your Windows Start menu. (You can also choose to run the game immediately after installing it).

When the game begins, you will see the introductory movie. Once past the movie, a frame will appear around your screen and will remain throughout the introductory screens. You can hit the quit button in the upper right corner at any time to exit *UO*.

See the Install Guide for information on installing and setting up an account.

CHAPTER 4: CREATING A CHARACTER

Creating an *Ultima Online: Renaissance* character can be extremely simple, but the system also permits a great deal of flexibility to personalize your character. Here is some information that not only explains how to create a character, but also helps you decide which type of character is the best choice for you.

If you know little or nothing about the game, character creation can seem like a daunting task at first. You might want to regard your first character like the first pancake – you get to throw it away. In the course of learning the game you may want to play a very different character than the one you began with. Thus, it's a good idea to consider your first character as the one you learn the game with, and your second character as the one you play the game with. It can be frustrating if you get very attached to your first character, only to discover that it's unsuitable for elements of the game that end up interesting you most.

Overview professions (templates)

When you create a character, the first thing you have to do is select a profession. You are presented with three choices at first: Adventurer, Merchant, and Advanced. If you are just starting out, you should avoid the Advanced option for now.

The choice between Adventurer and Merchant will be determined by the style of play you prefer. If you are interested in being a typical fantasy adventure hero who engages in frequent combat with monsters, then Adventurer is the choice for you. If you are more interested in chatting, social interaction, or the peaceful life of a merchant or tradesperson you should choose Merchant. Press the brass button to make your choice.

After making this initial selection, you will be asked to choose from a number of general types of professions. So, for example, an Adventurer can choose to be a Warrior, an Archer, or a Mage. There are subtypes within each of these specialties as well, and each one will display information and help about that particular profession within the text box. You can back up at any time hitting the brass arrow below the text box.

Every profession choice results in a character with slightly different qualities and attributes, but they are all designed to be suitable for a new character. A full list of the professions follows in outline form so you can begin to understand the hierarchy and subtypes of the *Ultima Online: Renaissance* character professions:

I. ADVENTURER (SYMBOL: JOUSTING KNIGHT)

Characters of this sort roam the world of Britannia seeking adventure and excitement through combat. With sword, bow, or magic, they battle monsters, pirates, bandits, and other dangers as they strive for wealth and glory. Adventurers aren't shy about getting into fights, and those who venture forth into the dangerous wilderness should be prepared to protect themselves.

This category subdivides into archers, magicians, and warriors.

A. Archer (Symbol: bow and arrow)

Archers tend to be quicker than warriors and stay moving to avoid their toughest opponents. They typically attempt to stay out of the thick of combat, using their skill with the bow to bring down an enemy before he can attack. Good advice for an archer: keep moving and don't forget to pick up your arrows (even from the bodies of fallen enemies).

1. Archer (Symbol: bow and arrow)

An excellent individual to have around in a fight, the archer is not only skilled with his bow, but he is also capable of cutting lumber from trees and crafting his own shafts and bows. (You'll need an axe for this). Getting a ready supply of feathers for arrows is as simple as picking off a few birds with your bow. Bows and arrows can be sold for fairly good money at the bowyer's shop.

2. Bard (Symbol: lute)

Although the bard is not as adept at physical combat as other adventurers are, he does have the additional benefit of exceptional musical ability. A bard can use this skill to cause other monsters to fight one another, and then take out the survivors with his sword. (Remember that this ability requires two targets to be effective.) A bard can also develop additional skills in pacifying monsters or enticing them to approach.

3. Field medic (Symbol: ankh)

The field medic combines a natural aptitude for archery with a healing ability to become an excellent addition to any fight. His knowledge of anatomy makes him more deadly with a bow and more effective with a bandage. Field medics can earn starting money by adventuring alone or with others. Remember to keep a good supply of bandages on hand.

4. Ranger (Symbol: head with feathered hat)

The ranger is useful for both his archery skills and his ability to locate and track both nearby creatures and people. Rangers have a natural way with wildlife, and they use this ability to tame pets that accompany them through the wilderness. To get a quick start as a ranger, tame a pet and find other animals to attack with your bow while ordering your pet to attack the same target.

B. Magician (Symbol: wizard's hat)

Magicians prefer to avoid any sort of physical combat. Instead, they use a powerful array of magical spells to attack opponents, and protect themselves. A skilled magician is a formidable opponent. The key to playing a magician successfully is keeping track of your mana. As mana levels get too low, run away and meditate, or at least rest. A mage with no mana is a sitting duck.

1. Battlefield Mage (Symbol: phoenix)

The battle mage serves a mostly defensive purpose in combat, although he is equally ready to wade into a fight. His combination of fighting skill with the mage's magical ability, and healing makes him an excellent combatant both alone and in groups, although none of these skills are as good as those of a purist in any profession. Battle mages are not as effective against other magicians as mages or sorcerers.

2. Pure Mage (Symbol: wizard's hat)

The pure mage is an expert at all types of spells, both offensive and defensive, although he is especially well equipped to deal out damage in combat. Because casting spells is more effective at a distance and can be disrupted by being hit in combat, it is not ideal to take a mage into battle alone against powerful opponents or against large groups. A mage should always be prepared to teleport or recall out of danger.

3. Warlock (Symbol: flaming sword)

The warlock seeks combat of any nature, combining steel and sorcery to destroy his foes. Although he is not as good a warrior as the swordsman is or as good a magician as the mage, the warlock is certainly capable of surviving a battle and escaping with his life when his spells are exhausted. Warlocks should limit their armour so they can move quickly and have room for plenty of spell components.

C. Warrior (Symbol: helm)

Warriors are physically the toughest of adventurers, battling their foes in all-out, hand-to-hand combat. Such individuals require great strength to wear heavy armour and survive battles with dangerous foes. Mainly the types of weaponry that they prefer divide the different types of warriors.

1. Swashbuckler (Symbol: lute)

Although the swashbuckler is not as adept at physical combat as other warriors, he does have the additional benefit of exceptional musical ability. A swashbuckler can use this skill to cause other monsters to fight one another, and then attack the survivors with his sword. (Remember that this ability requires two targets to be effective). A swashbuckler can also develop additional skills in pacifying monsters or enticing them to approach.

2. Mace Fighter (Symbol: arm with mace)

The mace fighter prefers to use a heavy, blunt weapon, such as a mace, club, staff, or hammer. Although not as quick as the fencing weapons, blunt weapons can pack quite a punch in a fight, and many of them can be wielded one-handed, as well. Mace fighters are most effective when heavily armoured, and they can also benefit from the use of shields.

3. Fencer (Symbol: fencer in lunge)

The fencer is a warrior who prefers to fight with a light, quick thrusting weapon. This could be a dagger, a light spear, a kryss, or a fork. The main advantage of these weapons is their speed in combat, often allowing the wielder to get in more attacks than his opponent. Fencers benefit from the fact that their weapons are one-handed, freeing the second hand to hold a shield, spellbook, potion, or similar item.

4. Swordsman (Symbol: crossed swords)

The most common variety of warrior is the swordsman. Swordsmen have the widest range of available weaponry, including swords, cutlasses, large axes, halberds and other bladed weapons. Many of these weapons are one-handed, enabling the use of a shield in combat. The heavier ones, on the other hand, are capable of inflicting massive damage but require two hands and great strength to wield.

II. MERCHANT (SYMBOL: STACK OF COINS)

Merchants seek to make names for themselves by gathering wealth or crafting fine items. The craftsmen and tradesmen of Britannia provide the much-needed resources that enable adventurers to survive in dangerous settings. While some merchants venture into the more dangerous areas of the realm to find valuable materials, they tend to avoid combat if possible.

This category subdivides into craftsmen and tradesmen.

A. Craftsman (Symbol: saw)

As his title implies, the craftsman earns his keep by crafting items—whether of metal, wood, cloth, or a combination of these. Some craftsmen prefer to gather their materials themselves, while others purchase them from shopkeepers and still others set up deals with other players to keep their businesses in supply. Finished items can be used by the craftsman himself to further his career, sold to shopkeepers, or sold to other players for a handsome profit.

1. Blacksmith (Symbol: anvil)

The blacksmith's job is to locate and mine ore, smelt it into ingots, and forge the ingots into weapons and armour to sell at shops or to other players. The blacksmith should find a public smithy to use initially in order to create ingots and forge them into equipment. The most skilled of these craftsmen can create items of exceptional quality and durability, inscribing them with a maker's mark as a sign of the smith's prowess.

2. Carpenter (Symbol: saw)

The carpenter chops timber in the forests of Britannia and uses his skill to convert logs into lumber. This lumber may then be used to create all manner of furnishings, containers, weapons, and even additions to houses. Carpenters do not require a specific shop location to perform their work, but many items are quite heavy, so it is unwise to work for too long outside the protection of the town guards.

4. Tailor (Symbol: scissors)

The tailor uses the hides and wool from native creatures to craft clothing, armour, and even bandages. Because he is often required to locate his own materials, a tailor is familiar with tracking in order to locate the animals which will provide him the necessary materials. In addition, the tailor's skill with the needle and thread carries over into the realm of healing, allowing him to tend to others' wounds in times of need.

5. Tinker (Symbol: gears)

Tinkers are most adept at creating tools for use by other craftsmen. They are also skilled with mechanical devices and are able to combine small parts into larger parts which can be built into sellable items. Furthermore, a tinker can also create traps to protect containers and homes. These craftsmen use both lumber and ore in their trade, and they have some skill at extracting both from the environment.

B. Tradesman (Symbol: scales)

While craftsmen use raw materials to create items for sale or use, tradesmen are the primary source of raw materials in Britannia. These merchants tend to range far afield, gathering necessary supplies to take to market. For every environment — forest, mountain, and even on the open seas — there is a tradesman in search of new sources of wealth. Tradesmen are always on the lookout for trouble — and for any loot left lying around that may increase their profits.

1. Animal Tamer (Symbol: horse)

Tamers have the gift of communication with animals, being able to tame them and command them. He is also familiar with animal movement and can track a potential pet through the wilderness. The tamer is a valuable member of the community, as many starting adventurers desire pets to accompany them on their journeys or herd animals as a source of wool and meat.

2. Fisherman (Symbol: fishing pole)

The fisherman plies his trade along rivers, lakes, or the open seas, reeling in his catch for sale in towns. Fisherman are also known far and wide for their ability as cooks, and a well-made fish steak fetches a fair price in the marketplace. Some tales even tell of highly skilled fishermen bringing up sunken treasure from the depths, but the would-be treasure hunter should beware of hungry sea serpents!

3. Prospector (Symbol: pack mule)

The prospector wanders the wilderness of Britannia gathering its valuable resources — wood, ore, and wild plants. These he carries to shops and other buyers for profit. The best prospectors soon learn to craft products of their own. Because the prospector often encounters dangerous creatures and humans in his work, he is also adept at hiding from opponents.

4. Sorcerer (Symbol: quill and mortar & pestle)

The sorcerer is a scholar of all things magical. He is adept at casting spells, although not as powerful as the mage, but his primary focus is in the area of creating small magical items. The sorcerer uses his abilities in alchemy and inscription to craft potions and scrolls for himself or for other mages. In order to perform his work, a sorcerer requires large quantities of spell reagents, which can be bought or found in the wild.

Once you have arrived at your final profession selection, a list of your starting skills, and three sliders indicating your initial attributes will replace the buttons on the right.

You begin with 65 points to distribute between Strength, Dexterity and Intelligence. The minimum for a starting attribute is 10, the maximum, 45.

Strength governs how much you can carry, how much damage you can do in combat, and which weapons and armour you can use. It also modifies several skills. Your Strength score is also equal to your maximum Hit Points, which determine how much damage you can take before dying.

Dexterity governs how quickly you react and modifies several skills. Your Dexterity score is also equal to your maximum Stamina, which determines how long you can keep moving, fighting or engaging in other strenuous activity.

Intelligence is extremely important to a number of skills, notably Magery and Magic Resistance, as well as many craft and lore skills. Intelligence is also equal to your maximum Mana, which determines how much energy you have available for spell casting at any given moment.

Note: It is not advised that you change these attributes and skills until you are experienced in the game.

However, if you choose Advanced character selection, you can manipulate your attributes directly by dragging the brass sliders to the desired settings, and you can change your skills by clicking on the Skill field on the lower right of the screen. The text window will change to a list of skills. Simply click on the one you want and it will move to that field. You can then adjust the slider to determine how many points you wish to allocate to that skill. Remember that you only have so many points to distribute across all three skills!

Stats explanation and Skills

Brief overview

I. ADVENTURER

A. Archer (Symbol: bow and arrow)

Skills	Stats
Archery	50
Strength	45
Bowcraft	25
Dexterity	10
Lumberjacking	25
Intelligence	10

1. Bard (Symbol: lute)

Skills	Stats
Musicianship	50
Strength	45
Provocation	40
Dexterity	10
Archery	10
Intelligence	10

2. Field medic (Symbol: ankh)

Skills	Stats
Archery	40
Strength	35
Healing	30
Dexterity	20
Anatomy	30
Intelligence	10

3. Ranger (Symbol: head with feathered hat)

Skills	Stats
Archery	50
Strength	45
Tracking	25
Dexterity	10
Animal Taming	25
Intelligence	10

B. Magician (Symbol: wizard's hat)

1. Battlefield Mage (Symbol: phoenix)

Skills	Stats
Magery	40
Strength	35
Mace fighting	30
Dexterity	10
Healing	30
Intelligence	20

2. Pure Mage (Symbol: wizard's hat)

Skills	Stats
Magery	50
Strength	35
Evaluate Intelligence	25
Dexterity	10
Resisting Spells	25
Intelligence	20

3. Warlock (Symbol: flaming sword)

Skills	Stats
Swordsmanship	40
Strength	35
Magery	40
Dexterity	10
Resisting Spells	20
Intelligence	20

C. Warrior (Symbol: helm)

1. Swashbuckler (Symbol: lute)

Skills	Stats
Musicianship	50
Strength	45
Provocation	40
Dexterity	10
Swordsmanship	10
Intelligence	10

2. Fencer (Symbol: fencer in lunge)

Skills	Stats
Fencing	50
Strength	45
Parrying	25
Dexterity	10
Anatomy	25
Intelligence	10

3. Mace Fighter (Symbol: arm with mace)

Skills	Stats
Mace Fighting	50
Strength	45
Parrying	25
Dexterity	10
Anatomy	25
Intelligence	10

4. Swordsman (Symbol: crossed swords)

Skills	Stats
Swordsmanship	50
Strength	45
Parrying	25
Dexterity	10
Anatomy	25
Intelligence	10

II. MERCHANT (SYMBOL: STACK OF COINS)**A. Craftsman (Symbol: saw)****1. Blacksmith (Symbol: anvil)**

Skills	Stats
Blacksmithing	50
Strength	45
Mining	50
Dexterity	10
Intelligence	10

2. Carpenter (Symbol: saw)

Skills	Stats
Carpentry	50
Strength	45
Lumberjacking	40
Dexterity	10
Bowcraft	10
Intelligence	10

4. Tailor (Symbol: scissors)

Skills	Stats
Tailoring	50
Strength	45
Tracking	40
Dexterity	10
Healing	10
Intelligence	10

5. Tinker (Symbol: gears)

Skills	Stats
Tinkering	50
Strength	45
Mining	25
Dexterity	10
Lumberjacking	25
Intelligence	10

B. Tradesman (Symbol: scales)

1. Animal Tamer (Symbol: horse)

Skills	Stats
Animal Taming	50
Strength	45
Tracking	25
Dexterity	10
Animal Lore	25
Intelligence	10

2. Fisherman (Symbol: fishing pole)

Skills	Stats
Fishing	50
Strength	45
Cooking	45
Dexterity	10
Camping	5
Intelligence	10

3. Prospector (Symbol: pack mule)

Skills	Stats
Mining	40
Strength	45
Lumberjacking	40
Dexterity	10
Hiding	20
Intelligence	10

4. Sorcerer (Symbol: quill and mortar & pestle)

Skills	Stats
Alchemy	35
Strength	35
Inscription	35
Dexterity	10
Magery	30
Intelligence	20

Appearance

Once you've decided on your name and profession, it's time to mold your character to look the role. An alcove in the center of the screen shows the current state of your figure. This figure will represent you in the game, so you should take your time and decide what you want to look like.

On the left you will see a list of physical attributes you can change about your figure. Simply double-click on each field to see the pull-down menu of possible options for that field. Once you make a selection, the appropriate change will appear on your character. Unselect the attribute to change back, select another attribute to try another style.

On the right side is a list of colour choices. Simply click on the colour box to change it. A palette will appear. You can mouse over the colours and see how they would look on your figure. Once you find the one you want, simply click on it, and the change will be made. Once you are satisfied with your appearance, click the right-hand triangle button to continue.

Selecting a name

Your character's name is probably the first impression other players will have of you. Offensively named characters may be assumed to be offensive and treated rudely. If you wish to be taken seriously, choose a name for your character wisely, as your character will be stuck with it for life.

Ultima Online allows redundant naming, so there may be other characters at loose in the world with a name identical to yours. Most names are allowed, although egregiously offensive names are screened, and a few names of important characters (e.g., British, Blackthorn) are reserved.

Starting location

A map of Britannia will appear, with possible starting cities written on it. The exact cities available to you as starting locations depend on what profession you selected. As you click on a city name, a description of the city will appear in the text box. Once you pick a city, click the Next button to continue.

CHAPTER 5: TUTORIAL

Accepting the invitation

The first time you log in, you will receive an invitation to take the tutorial. Given the depth and complexity of this game, we strongly suggest you accept the invitation. This tutorial is not a dry series of help screens. Instead it is a guided walk-through of the game environment that teaches you important basics, such as how to move around, how to fight, and how to interact with the world. It also has the virtue of being brief.

Visiting Haven

Once you complete the tutorial, you will be taken to Haven. Haven is a city where Companions teach new players “the ropes” of *Ultima Online*. Since all players exiting the tutorial will need to become comfortable with their new skills, Haven provides a safe venue where that can be done. When you feel comfortable, you can choose to learn the more advanced features of the game.

Companion Overview

In Haven, you will be able to find Companions. Companions are volunteer players who will spend their time in Haven helping new players and answering any questions you may have. In addition to Companions, Haven will have smarter NPCs that will be able to give clear directions, tell you where the nearest Companion is and, if you are at the correct station, they will be able to give you instruction on how to use a skill. For instance, if you wish to learn how to blacksmith, the Haven blacksmith could provide you with tools, materials, and basic instructions.

Because Haven is on an island, it is cut off from the rest of Britannia. Only new players and Companions will have access to the island.

CHAPTER 6: BASIC INTERACTION

Walking Around

You move by right-clicking. Place your cursor over a point on the screen and click your right mouse button. You will face and take a step towards the cursor.

NOTE: Throughout this manual, “click” or “double-click” refers to the left mouse button. Where the right mouse button is required, this is fully spelled out, as “right-click” and “double right-click.”

Continual Movement

Holding down the right mouse button and left clicking once will put you into continual motion, in the direction your mouse cursor is pointing. Or you can place your cursor some distance away in the direction you want to go and right-click and hold the right button down. You will keep moving in the direction of the cursor until you either release the button or run into something. The farther you move your mouse from your character while moving, the faster they will move.

Talking with other players

Most of your communication in *Ultima Online* will be done by “talking” or by way of normal communication. In UO, speaking to other players is as simple as typing. Whatever you type on your keyboard will appear above your character’s head. Your speech will be heard (seen) by anyone on the same screen. There are also chat and messenger features you can use. For a description of those features, see the chapter on Advanced Communication.

Emote

Voice inflection is not easily translated by typing; however, UO allows you to emote your feelings. By typing a colon “:” followed by a space, your text entry will be emoted. Your “emote” will be surrounded by asterisks and will be a different colour than your normal speech. Emotes (emotions) allow for you to suggest an action that your character is doing to immerse yourself in the environment. ***kicks dirt* *twirls hair* *sighs***

Whisper

If you type a semicolon (;) and a space before your text, that text appears as a whisper, and can only be seen by characters immediately adjacent to you. For example,

; I don't like the looks of that guy.

; Psst. Wanna buy a chicken?

Yell

If you type an exclamation point (!) and a space before your text, that text appears as a yell, and can be seen by characters even beyond the edge of the screen. For example,

! Leo, where are you?

! STOP! THIEF!

Talking With NPCs

Before you can talk to NPCs, you must first get their attention. Thus, everything you ask NPCs must include their name. To get the name of an NPC click once on him or her. With vendors or shopkeepers, you need only employ their job title. For example, if you wish to buy something from a Vendor, get physically close to one and say, "Vendor buy." If, for some reason, the vendor ignores you, then you might want to preface "buy" with the vendor's name.

As the example above also illustrates, you don't have to speak in complete sentences when you address NPCs. You can ask NPCs about their jobs, about the local area, or about any current news or rumors. You can also ask them if they've seen or heard of other players. Often, NPCs have some specific needs. For example, a baker might be low on wheat to make flour, or a blacksmith may be short of metal ingots to make armour or weapons. They'll be happy to inform you of such needs, and will pay well if you can fulfill them.

Useful questions to ask NPCs:

- Where am I?
- What time is it?
- Where is (something)?
- How are you?
- What do you need?
- Have you heard any rumors?
- What's the latest news?
- What is there to do around here?
- Anything interesting going on around here?

Training from NPCs

When you're a new player, one way to jump start your progress in a given skill is to pay for training from an NPC. To obtain training in the basic professions, go to a shop related to that profession. Then, get physically close to the NPC shopkeeper or tradesman, and say, "[name of NPC] train." The NPC will then tell you the various skills he is qualified to teach. Pick the one you're interested in and say, "[name of NPC] train [name of skill]." The NPC will give you a price to teach you all he or she can. You can pay less and get less than the full training the NPC can offer.

Vendors

NPC vendors allow players to sell things to other players, even when they're not logged in. Vendors are indestructible and will not move from the site where they are placed.

Interacting With Vendors

To talk to a vendor, a greeting and action must be on the same line ("Hi browse," "Vendor buy").

Greetings include the vendor's name, title (vendor, shopkeeper, salesman, salesperson, saleswoman) and general salutations (hi, greetings, hello, yo, hey, hail).

Valid Requests Include:

Browse, view, look

The vendor will display his inventory, so you can browse his goods. A prospective customer can use Arms Lore or Item Identification on the items. Double-clicking on a vendor acts the same as "browse".

Buy, purchase

The vendor will ask you to target the item to buy. The gold is removed from your inventory if you are carrying it, or from the bank if you're not. If you are the owner, he will tell you that you don't need to buy the items.

Status, info

If you are the vendor owner, the vendor will describe his status, including how much gold he's holding, how much he charges per day, and how many more days he will continue working, assuming nothing changes.

Collect, gold, get

If you are the vendor owner, the vendor gives you all the gold he's collected from purchases. See the chapter on Hiring and Maintaining Vendors for information on hiring your own NPC vendors.

Money

Everybody has to make a living, even in Britannia.

Getting Money

Be prepared to spend some time building a nest egg – it's not easy. Note that shoplifting from local merchants is not the best way to build a nest egg – even if you get away with it, merchants can usually spot a “hot” piece of merchandise appropriated from a fellow tradesman's display.

You can make some money and train up your combat skills by “bunny bashing” – hunting small creatures like rabbits, birds, pigs and even rats. Be careful not to attack anybody's pet – that's a criminal action! A pet will have [tame] above its head if it is a pet. When you kill small game, use your dagger or other bladed weapon on the corpse to take its meat, hide or feathers. Meat can be sold to butchers or tavern keepers, hides and skin to furriers and tanners, and feathers to fletchers.

Remember that because supply and demand is an important part of the virtual economy, shopkeepers will not automatically buy everything you try to sell. Shops can become overstocked with items, and while they will “sell back” overstock at regular intervals, they will not be interested in buying anything that's currently overstocked. Furthermore, shopkeepers will pay less for items of which they have plenty. One good way to gauge the “market potential” of a shopkeeper is to say “buy” to get a look at the shop's current inventory. Any items that seem particularly scarce will probably command a premium price, while items that show up in quantity will command a cheap price or none at all.

If the market for a certain type of wares becomes glutted in one town, the best thing is probably to seek out a better market in another town. If you feel that you're not yet ready to venture out of town, perhaps a more experienced character could be convinced to act as a “middle man,” paying you for your wares so he can sell them in another town at a profit.

CHAPTER 7: ENVIRONMENT MANIPULATION

Identifying and Picking Up Items

A single click on any item in the game will tell you what it is, to the extent of your character's ability to recognize it. To pick up an item, click and hold on the item and drag it over your character or your backpack. You can release it over your character, drag it directly to your Backpack window, or drag it to the Backpack on your Character Window, if either is open.

Because some items in the game are very small, and might be difficult to click on them precisely. Items in your inventory will highlight when your mouse is in the correct position to click on them.

Using Items

Double-click on an item to use it. For example, double-click on a book to open and read it. Double-click on food to eat it.

Many items require a series of actions. For example, a miner double-clicks on his pick axe, which turns his mouse cursor into an aiming circle that he moves over the portion of rock he wishes to mine. He then single-clicks to mine the site he's selected.

Sometimes you will need to use one item on another item. For example, you might need to use a spinning wheel to change wool into yarn. In this case, you would double-click on the raw material, the wool, and then single click on the item being used, the spinning wheel. The wool will become yarn. Any time you try to use an item that requires multiple stages or other items, the game will prompt you for the next step.

Dropping Items

At any time you may remove items from your inventory and drop them almost anywhere on the screen near your character. If, for some reason, the item can't be dropped in the location you've selected, either an error noise will sound or the item will return to your inventory.

A dropped item will stay where it is until it deteriorates naturally or someone picks it up. Dropped items don't tend to stay around for long. Not only are other players likely to be interested in your discarded possessions, but NPCs and even monsters are also always on the lookout for items that meet their current needs.

Stacked Items

Some items in the game, notably gold, can be stacked. This means that all the items of that type in your inventory can appear, and be moved around as a single item. If you want to do something with only a portion of the total items in a stack, click and drag the stacked objects in your Backpack to whomever or wherever you want it. This brings up a window showing the quantity in the stack, with a slider that allows you to adjust the quantity you wish to move. To change the quantity, slide the blue stone on the right side of the slider to the left. You can also type the number in that you would like to manipulate. The amount you select will remain on your cursor, and the remainder will be returned to your inventory.

CHAPTER 8:

THE CHARACTER WINDOW

All the information about your character, as well as most of the game options, is accessible from your Character Window. To open the Character Window double-click on your character.

The Character Window – as well as all information windows in the game – can be closed by right-clicking on it. All such windows in the game can be moved by left-clicking and dragging them to another location on your screen. Many can be minimized by clicking on the minus sign (-) on the window.

Name

Your Character Window displays your character's full name, including profession, any titles you may have, guild affiliation, if you belong to one, and any guild titles you may have earned. Your name will also reflect your reputation (the reputation system is explained further along in this manual).

Clothing/Armour/Weapons

The Character Window shows a close-up view of your character, including the clothing and armour you're currently wearing, or any weapons or tools you're currently wielding. Click on any tool, weapon, or clothing item to identify it.

To remove any item on your person in the Character Window, click and drag it to your Backpack or to the ground. Then, drag the item you're replacing it with to the proper spot on your character and release the button.

You must have one hand free to drink a potion, and both hands must be free to cast a spell from a spellbook or scroll.

Backpack

Everything you're carrying that you're not wearing or wielding is in your Backpack. Double-click on the Backpack to the right of your character in the Character Window to open your Backpack and display its contents. After you open the backpack, you can remove items by clicking and dragging them. If you have many items, it may prove difficult to select the item you wish. The best way is to move the cursor until the item you want is highlighted. If you're not sure what the highlighted item is, click on it to identify it.

Profile

The scroll icon in the lower left corner of the Character Window opens a character profile screen. You may fill this page with any information about your character that you wish to be public knowledge. To do this, click on the page and start typing. Close the page when it displays the information you want others to see. Other players viewing your Character Window can open the profile and read it at any time. (Profane and abusive profiles are not allowed).

Options

This opens an extensive menu of Options to allow you to customize your game screens, game sounds, and other game functions.

Logging Out

This button will disconnect you from the game and return you to the Main menu. Your in-game character will remain in the game for five minutes after you log out. Your character will fight back if attacked, but only melee. This function exists so unscrupulous characters will not be able to unfairly escape dangerous situations simply by breaking their internet connection.

Safe Logout

If you log out by using your camping skill or log out while at an inn or in your house, your in-game character will disappear from the world immediately, and will not be subject to the five minute log-out timer.

Help

There are several different kinds of helpers in the game to take care of unusual problems that may arise.

Companions

Companions are experienced players who wish to help introduce newer players into the world of UO. Companions do not have special skills, however their experience is an invaluable resource for new players. It is rumored that companions of UO are rewarded for their good deeds.

Counselors

Counselors are experienced players who have volunteered some of their playing time to helping others. Counselors appear in blue robes with hoods. They can be paged from the help button of your Character Window, and will be happy to answer general questions. Counselors can move about the world at will, and are invulnerable to harm, but otherwise their ability to effect the game is severely limited. Because counselors are volunteers who set their own schedule, they may or may not be available when you call.

Game Masters

Origin employs a staff of dedicated customer service employees to help with specific issues in the game. When you are in need of help in the game with an unusual problem, you may issue a call to a GM. The In-game Help menu will aid you in determining when you need a GM.

Journal

The Journal button opens a scroll-shaped window that contains a written record of your most recent conversations and actions during the current play session. You can resize the Journal window by clicking on the tab at the bottom, then adjusting the size of the white outline.

Clicking on the padlock icon will lock the visible text in place until you click on the padlock again.

Skills Window

This button opens a window listing all your skills and their ratings.

Skills are arranged by category: Miscellaneous (craft skills), Combat Ratings, Actions, and Lore and Knowledge. Click on a category to display your ability with all the skills it contains. The abilities listed are modified by your stats, giving you a positive rating even in skills you didn't initially choose and have never practiced. If you wish to group together the skills you use most often, click on New Group at the bottom of the skills scroll. You may then drag any skills you wish into the new group.

Once you establish the new group, you can rename it by highlighting the words New Group and typing over them. You may make multiple new groups if you wish. You may delete any of the four default groups by completely emptying it of all the skills it originally contained.

Many of the skills listed have a blue jewel next to their listing. The jewel indicates that in order for the skill to be used, it must first be evoked from this scroll. To evoke a skill, open the scroll and click on the blue gem.

You will be able to set certain skills to raise, lower, or lock. For more information on how and why to do this, see chapter 10.

Chat

This will open the Chat window.

Peace/War

Clicking this box will take you from Peace mode to War mode and vice versa. See Fighting for more information.

Status

This button opens a window to display your character's Vital Statistics. Notice that there are two values for Hits, Mana, and Stamina (Stam). The number on the right is your current possible maximum in these stats, while the number on the left is your actual status at the time you open the window. By comparing the two numbers you can see just how tired or wounded you are, or how much your magical energies are depleted.

The remaining information on the status window includes:

Armour Rating (AR), which provides you with a general idea of the protection afforded by your current armour and clothing. Damage is allocated to specific locations on your body, so a high armour rating won't help you if you're hit in an unarmoured location. Gold, the amount of cash you currently have on your person. Weight (Wght), the total weight of all clothing and inventory items (in stones, the standard Britannian weight unit).

CHAPTER 9: OPTIONS SCREEN

Interface Options

This screen allows you to set how your speech will appear to others, personalize the game's sound settings, and affect how you perceive your surroundings.

Flexible Window

Anytime you set a resolution for UO that causes the play area to be smaller than the screen area you're using to play the game, the remainder of the screen area is black. You can then move any of the smaller movable windows (for example, your Character Window or the small overhead map) to the black area. This way, they don't overlap the play area.

To change the resolution for UO, please read the information under Display. Since the UO play area is always 640 x 480, any resolution larger than 640 x 480 (i.e., 800 x 600 or 1024 x 768) fills the remaining UO screen area with black. This is possible both when running in full-screen mode (use full screen display toggle on the Display screen) or when running with a window larger than 640 x 480. To make the UO screen area window larger or smaller, click-and-drag its lower right corner, just as you would resize any other window.

To move the play area around within a larger screen area, click-and-drag the gold braid border in the direction you want to move the play area.

Common Buttons

Important game options can be accessed by using the Options button on your Character Window. There are many different screens you can access.

Each of the configuration screens has the following buttons:

Cancel	Cancels all changes made on the screen since it was opened or saved.
Apply	Saves all changes for the duration of the current play session.
Default	Erases all previous changes, returning the screen to its pre-set default values.
Okay	Permanently saves all changes made on the screen since it was last opened or saved.

Sound and Music

These options allow you to configure the sounds in the game.

Sound On/Off	Toggle sound on or off. A Volume bar beneath it can be set by sliding.
Music On/Off	Toggle music on or off. A Volume bar beneath it can be set by sliding.
Play Footstep Sounds	Toggle on or off the sound of your own footsteps when you move.
Reverse Speakers	Reverses the sounds coming from your left and right speakers.

Pop-Up Help

These options allow you to configure the game's pop-up help feature.

Use Pop-up Help	Toggle the help feature on or off.
Delay Slide Bar	Control how quickly a help box will pop up under your mouse cursor.
Text Colour	Change the colour of your help text by clicking on the coloured box.
Text Font	Choose the font you want for help text by clicking on your choice.
Sticky (toggle)	This means the help box always appears in the same spot. Move any help box to the desired spot, and subsequent boxes will appear in the same spot.
Persistent (toggle)	This means the help box will stay on the screen until you close it. You must close the help box before you can get help for a new object.

To close a help box when Persistent toggle is on, remove your cursor from the box. To see additional text within the help box, click on the up and down arrows at the left of the box.

Language

These options allow you to enable non-English-language support for tool-tips. Tool-tips are similar to pop-up help, but they describe buttons, rather than items in the game.

A second set of options allows you to translate foreign speech that appears during the game (see Autotranslation, below). The language supported by *Ultima Online* is automatically determined based on your operating system settings.

Use Tool-tips	Toggle foreign language tool-tips on and off.
Font	Choose the font you want for tool-tips. Click on your choice.
Colour of Tool-tip	Set the colour of the text in tool-tip translation boxes.
The Delay before Tool-tip sidebar	Specify the amount of time before a tool-tip box pops up.

Autotranslation

You can configure UO to automatically translate foreign speech, both in the game and while chatting.

Enable Translation Server	Toggle this feature on or off.
Automatically translate incoming text	Automatically translates everything foreign that appears, into the specified language.

Chat

The first Chat icon opens a list of different entries that appear when you are in Chat. For each entry, clicking on the coloured box allows you to set the colour and brightness of that type of entry. You will need to close and reopen the Chat Window for these changes to take effect.

Input text colour	The text visible to you as you type it in chat.
Menu option colour	The colour of the chat system menus.
Player colour in member list	The colour of your name in the right hand list of players in the conference.
Chat text	The text that other players have posted to the conference.
Players without speaking privileges	Players present at the conference whom the moderator is not allowing to post messages.
Muted text	Any message you send just to a few members of the conference.
Moderator	The person running the conference.
Moderator text	All text by the channel moderator.
My name	Your name.
My text	Text you post to the conference.
System message	Any message signaling the arrival of new players to the conference, departure, and so forth.
Chat Font	Choose the font you want for chatting. Click on your choice.

Background colours.

You may select the colour and brightness of the background in each box on the chat screen.

Text Output	The large window on the left that shows all posts to the conference.
Text Input	The window at the bottom that shows text you are typing but have not yet posted.
User List	The large window on the right that shows all players currently in the conference.
Conference List	The bar at the top left that shows your current conference, with a pull-down menu that shows the conferences you can select.
Command List	The bar at the top right that has a pull-down menu showing the commands you can select.

Macro Options

Macros are an important feature of the game that allow you to fully customize your interface. Macros let you string together complex command combinations to fit any circumstance that you think may arise. You can have as many Macros as you like (at least until you run out of keyboard commands), and a Macro can contain as many actions as you wish (of course, the more actions a Macro has, the less likely it is to be useful on a regular basis during play).

You can scroll through your current list of Macros using the previous and next buttons on the Macro screen.

To enter a new Macro:

Click on the add button for an empty command field. Enter the key you want to use to trigger the new Macro (numbers, letters and punctuation may be used). You may also toggle the ALT, CTRL or SHIFT keys on or off. For example, if you want to enter four Macros for use in battle, they can be triggered by B, CTRL+B, ALT+B and ALT+SHIFT+B. (Note that Macro commands using only letters, or SHIFT+letters, may be unintentionally triggered during normal text exchanges).

Once you've selected the trigger, enter the commands that will make up the Macro itself in the field below the command field. Click on the field to see a list of available options. Each time you set an option, a new command field will open up for any further commands you wish to apply to your Macro. When your Macro is done, just stop adding commands and click ok to save.

You can delete an existing Macro by putting it up in the window and clicking the delete button, then ok.

Note that any changes to your Macros will be applied to all characters on your account, not just the one currently in play.

The following commands are available in the Macro window:

Say	Open a text window where you can enter a line of dialog that your character will speak when the Macro is used.
Emote	As Say, but may be a different text colour than normal speech (see "Change Emote Colour" above). Also, any Emote text will be placed between two asterisks, for example *grin* or *Broods darkly*. The traditional function of emote text is to convey actions, attitudes or emotions rather than simple speech.
Whisper	If you type a semicolon (;) and a space before your text, that text appears as a whisper, and can only be seen by characters immediately adjacent to you. For example, ; I don't like the looks of that guy. ; Psst. Wanna buy a chicken?

Yell	If you type an exclamation point (!) and a space before your text, that text appears as a yell, and can be seen by characters even beyond the edge of the screen. For example, ! Leo, where are you? ! STOP! THIEF!
Walk	Opens a menu of compass directions from which you choose one. Using this menu causes your character to face and take a step in the selected direction.
War/Peace	Toggles you between War mode and Peace mode.
Paste	Pastes text from your Windows clipboard into a book or speech. Text length is limited. Speech can be only a few words, while books can receive a few sentences.
Open	Opens one of your informational windows. Selecting this option will present you with a list of windows from which to select. Your Character Window is listed as "Paperdoll" and your Options screen as "Configuration".
Close	Closes the window you specify.
Minimize	Minimizes all open windows.
Maximize	Fully opens all minimized windows on screen.
Open Door	Opens any door within reach.
Use Skill	Presents you with a list of all applicable skills, from which to select the specific skill you want to try to Use when you trigger this Macro. This command can only be used to initiate those skills which are normally begun from the skill list in your Character Window. It does not apply to skills initiated by using a specific item or taking a certain action.
Last Skill	Attempts to again Use the last skill you Used.
Cast Spell	Presents you with a list of all the spells in the game, from which you must select the specific spell you want to cast. It's up to you to ensure the spell you select is, in fact, one that you actually know how to cast.
Last Spell	Attempts to recast the last spell you cast.
Last Object	Attempt to again Use the last item you Used.
Bow	Your character will bow from the waist.
Salute	Your character will perform a military salute.
Quit Game	Disconnects you and closes the game.
Allnames	Displays the names of every creature and character currently on screen.

LastTarget	Automatically target the last object, creature, or player that you clicked on with the targeting cursor.
TargetSelf	Targets you. Used in conjunction with other macros
Arm/Disarm	Arms or Disarms your current or chosen weapon. You must specify an arm (right or left).
Wait for Target	Waits for the target cursor to become available.
Target Next	Moves your target cursor to the next available target.
Attack Last	Attacks the creature or player you last targeted.
Delay	Allows you to set a "wait" delay within a complex macro.
CircleTrans	Allows you to toggle Circle Transparency with a macro.
CloseGumps	Closes all open pop-up messages.

The following Macros have been pre-set, and can be used immediately upon entering the game. If you don't like the way a pre-set Macro is set up, you can change it at any time.

ALT+S	Open Status window
ALT+B	Open Spellbook
ALT+C	Toggle between War/Peace modes
ALT+P	Open Character Window
ALT+K	Open Skills
ALT+J	Open Journal
ALT+I	Open Backpack
ALT+R	Open Overhead View
ALT+O	Open Options window
ALT+X	Quit game
CTRL+B	Bow
CTRL+S	Salute
The Function keys	This is a series of commands useful in navigating ships.

Interface

These options affect your interface controls.

Run mouse in a separate thread	Toggle to affect the way your mouse tracks on screen.
Enable pathfinding with double-right-click	Allows you to turn pathfinding on or off.
Combat Tab Key	Toggle between holding down the Tab key to remain in War Mode or tapping the Tab key to toggle yourself in and out of War Mode.
Offset interface windows	Choose whether new interface windows will open directly over older ones, or be offset elsewhere on the screen.
Automatically arrange minimized windows	Turn automatic arrangement of minimized windows on or off.
Assume Play As Ghost	Disables instant resurrection.

Display

These options affect the visual presentation of the game.

Enable page flipping	Toggle that may be necessary with certain video cards. It affects the way the game buffers art as it appears on the screen.
Use GDI in full screen display (toggle).	Select this option if your video card has problems with DirectX drivers.
Use full screen display	Toggle to switch from a window to a full-screen display.
Full screen resolution	This includes three buttons that allow you to set the resolution of your game window: 640 x 480 800 x 600 1024 x 768
Switch to 565 colour mode	This check box can put the game into 565 colour mode. This option may be necessary on systems running certain video cards under Windows NT.
Adjust how long speech remains on-screen	A slider that allows you to set how long speech remains displayed on your screen.
Scale speech	A toggle that (when on) leaves longer speech on the screen for a longer time than shorter speech.

Enable frame skipping

Option that may improve game response time on some slow systems, at the cost of some visual realism.

Speech colour

Set the colour in which your words will appear when you speak.

Emote colour

allows you to display pre-set text in a second colour. You can switch from your speech colour to your emote colour using a Macro (see above) or the colon text flag.

Reputation

These options have to do with the Reputation system colour coding which helps you defend yourself against anti-social behavior.

Query (at the bottom of the list) Toggle to turn on or off a warning window that will pop up any time you try to target something that would lower your Karma to attack. With Query on, you will have to confirm that any such attack is intentional.

The remaining options allow you to adjust the colour of highlighting used to distinguish characters.

- Innocent
- Friendly guild
- Someone that can be attacked
- Criminal
- Enemy Guildmember
- Murderer
- Query before criminal actions

Miscellaneous

- Show the intro movie on launch** Shows the intro movie at the start of the game when toggle is On.
- Order disk cache** Game automatically arranges your disk cache for maximum efficiency when toggle is On.
- Save text log file** Save all journal text to a text file on your system.
- Save log file in unicode format** Store your Login Unicode text.
- Use circle of transparency** Makes solid objects in the foreground appear translucent.
- Set radius of transparency circle** Slider that allows you to control the size of your area of transparency.
- Speech font** Choose the font you want for speech. Click on your choice.

Filter Options

These parental control options allow you to screen out objectionable speech by other players.

- Filter Obscenity** Cause the game to render most common vulgar words as random strings of punctuation, i.e., comic-strip style "swearing." Click again to toggle the filter off.
- Ignore Players** When a character's name is added to this list, that character's speech will no longer be visible to you.
- Click to Edit Profanity List** Gives you access to the list of filtered expressions, from which you may add or remove words or phrases.
- Password Protect** Primary user of the game can set a password to lock other users out of this screen. For example, it allows you to keep a child from turning off the obscenity filter or viewing the profanity list.
- Change Password** Pick a new password to this screen.

CHAPTER 10: SKILLS

Improving Skills

You have a base competency with all the skills in the game. The only way to master a skill is to succeed in using it. You won't succeed very often with low-level skills, but if you want to improve, you must keep working on the skill until you gradually start to get it right. Skills are rated from 1 to 100, but a 0 skill does not mean automatic failure, and a 100 skill does not mean you're guaranteed to always succeed. Skill success can be modified by your applicable attributes, and can sometimes be affected by external conditions beyond your control, in addition to your raw skill level.

NPCs can train you in skills they know, but such training is quite expensive for the new player. To ask an NPC to train you, you will need to say the name of the NPC followed by "train <skillname>". For instance, if you wish to learn from Crowth the fighter, you might say "Crowth train swordsmanship". He would respond with an amount if he was able to train you. Drag that amount of gold onto the NPC and your skills will raise.

Using Skills

Some skills are used automatically in appropriate situations. For example, your weapon skill is checked every time you try to hit somebody with a weapon of a given type, and your Magery skill is checked whenever you try to cast a spell. Most skills, however, must be deliberately evoked from the skill list in your Character Window, or from an in game Macro. You can also evoke some skills by using an item exclusively devoted to that skill - for example, using a shepherd's crook evokes the Herding skill. Your skill list can be rearranged by clicking and dragging skills, allowing you to put the skills you use most at the top, or to group similar skills together.

Below are notes on using the various skills. To find out what the skill does in fictional terms, see the Travelers' Guide on the web site (<http://guide.uo.com/>).

Alchemy.

Alchemy creates potions. You must have access to a mortar and pestle, the appropriate type of reagent and an empty flask. Use the mortar and pestle, then click on the reagent (or you may click again on the mortar and pestle, and it will automatically attempt to make the same type of potion as the last potion you made). If there is more than one type of potion that can be made from the selected reagent, you will be presented with a list to select from. If you succeed, the mortar will fill with the appropriate potion (if you fail, you'll have to dump the mixture and you will lose the reagent). If you have an empty flask in your inventory, it will automatically fill with the new potion. You may also target a specific empty flask to fill it, if a flask is nearby but not in your inventory. You may leave the potion in your mortar, but will not be able to make any other kind of potion with that mortar until you use the current potion, dump it or put it in a flask.

Anatomy.

Use the skill, then click on the creature or character you wish to evaluate. If successful, you will see a text description of the subject's physical condition.

Animal Lore.

Use the skill, then click on the animal you wish to know about. If successful, descriptive text about the animal will be displayed.

Animal Taming.

Use the skill, then click on the animal you wish to tame. Some animals are much harder to tame than others.

Archery.

This skill is checked automatically each time you use a bow or crossbow.

Arms Lore.

Use the skill, then click on the weapon or armour you wish to evaluate. If successful, text will appear describing the item.

Begging.

Use the skill, then click on an NPC in your immediate vicinity. If successful, you will be given some money (if the NPC has some to share). Please note that begging will affect your karma in a negative fashion.

Blacksmithy.

Double-click on a smith's hammer or tongs while in the vicinity of a forge and anvil. A window will open displaying the types of armour and weapons you can make (based on your skill and your current supply of metal). Select the item you wish to make, and if you're successful an item of that type is created.

Select the anvil icon in the selector window to attempt to repair a metal item, then click on the item you wish to repair (note that on a botched repair attempt, it is actually possible to damage the item further, or even destroy it completely). Some metal is lost every time an item is reforged, so you cannot keep reforging the same item into something else and back again.

Bowcraft/Fletching.

Use a knife or other sharp object on a piece of wood, and the game will display the types of arrow shafts and bows you can make (based on your skill and your current supply of wood). Select the item you wish to make, and if successful an item of that type is created. To make functional arrows out of arrow shafts, you will need to attach feathers to them. Double-click on a supply of feathers, then click on a supply of shafts to create arrows.

Camping.

Double-click on a pile of kindling (kindling can be bought in town or gathered in wooded areas) to make a fire. Your skill will be checked automatically, and if successful you will receive a message that your camp is secure. To log out from a camp, use your bedroll in the vicinity of the campfire.

Carpentry.

Much like Blacksmithy. Double-click on a carpenter's tool (virtually any woodworking tool will suffice), and you will be presented with a window from which you can select the item you wish to try to make. You must have a sufficient supply of wood to select any item.

Cartography.

Use the skill and click on a blank map. A window will appear which will allow you to set your map's scale. The higher your skill, the greater the maximum scale. If successful, the blank map will be inscribed with a map of the appropriate scale. All maps will be centered on your position at the time they're made.

Cooking.

To use this skill you need access to a fire (campfire, oven or even a forge). Double-click on a food item, then on the fire to try to cook it. Cooking skill also lets you try to combine certain objects to make baked goods, i.e.:

- Use water on flour to make dough.
- Use dough with fruit, meat or vegetables to make a pie.
- Use dough with honey to make sweet dough.
- Use sweet dough and flour to make cake mix.
- Use sweet dough and more honey to make cookie mix.

If you use a bladed object on a caught fish, the Cooking skill will also allow you to bone and gut it into raw fish steaks.

Detecting Hidden.

Use the skill, then click on the area you wish to examine. If successful, any hidden characters will be revealed.

Enticement.

This musical skill allows you to charm an NPC or creature to peacefully approach you. Use the skill, click on a musical instrument (or the game will remember the last instrument you used), then on the creature or character you wish to entice. Each time you try to use this skill, the game will check against both it and your Musicianship skill.

Evaluating Intellect.

As Anatomy, above. Use the skill, then click on the character you wish to evaluate. If successful, text will be displayed describing his mental capabilities.

Fencing.

This skill is checked automatically each time a weapon of the appropriate type is used.

Fencing is your skill with piercing weapons, including pickaxe, dagger, kryss, pitchfork, spears and war fork.

Fishing.

Double-click on a fishing pole, then click on a body of water. If successful, you will catch a fish. You might catch something more interesting than a fish. Success with this skill also depends on the availability of fish in that specific area.

Forensic Evaluation.

Use the skill, then click on a corpse. If successful, you will get an informational message about the circumstances surrounding the demise.

Healing.

Double-click on a bandage, then click on the wounded character. If successful, the character will regain some Health and the bandage will be used.

Herding.

Double-click on your shepherd's crook and click on the animal you wish to herd. If successful, you will be able to click on the location you want the animal to move to.

Hiding.

Use the skill. If successful, other characters will not be able to see you as long as you remain immobile, take no offensive actions, and you do not say anything. Success depends on skill level and the amount of "cover" available.

Inscription.

This skill is used primarily to transcribe spells onto blank scrolls. To inscribe a spell onto a scroll, you must know the spell and have the appropriate reagents for that spell in your backpack (reagents will be consumed in the attempt). To begin, select the inscription skill from your skill list, then select a blank scroll. A scrolling list will appear which displays all of the spells you are capable of casting. From this list, select the spell you wish to inscribe.

Item Identification.

Use the skill, then click on the item to be identified. If successful, information about the item will be displayed.

Lockpicking.

Double-click on your lockpicks, click on the door to be picked. Some locks are harder to pick than others; magical locks, locks on player-owned houses and locks on ships can't be picked at all.

Lumberjacking.

You must have a hatchet or axe equipped. Use the axe, then click on a tree. If successful, you will get one or more wooden logs.

Mace Fighting.

This skill is checked automatically each time a weapon of the appropriate type is used. Mace Fighting is your skill with bashing weapons, including war axes, clubs, maces and staves.

Magery.

This skill is checked automatically each time you attempt to cast a spell. See Playguide.

Meditation.

This skill increases the rate at which your mana regenerates. There are two types of meditation extant in Britannia. The first is Passive Meditation. Simply put, the higher your Meditation skill is, the faster your mana will generate. The rate is also affected by the armour you are wearing: the more armour, the less effect Meditation will have. Active Meditation, however, requires a little effort from the participant. To use Active Meditation, ensure your hands are free, then click the Meditation jewel in your Skills list. If you successfully Meditate, a sound is triggered and you receive a message saying, "You enter a meditative trance."

If the message "You cannot focus your concentration" appears, then you failed to use the Meditation skill. Persistence may be rewarded; so wait a few moments and try again. The Meditation skill is disrupted by the same things which disrupt to the hiding skill. (see Hiding). Anything that reveals you from a hidden state causes your meditative trance to be broken. If this occurs, the message "You stop meditating" appears.

If you are at full mana you cannot use the Meditation skill and you will receive the message, "You are at peace".

The benefits of Meditation are greatly reduced if you wear metal armour whilst attempting to Meditate. Additionally, speaking, moving, casting a spell, or looting a corpse will break your concentration.

Mining.

Cultivating the Mining skill enables you to harvest the seams of ore that lie in the mines and mountains of Britannia. This ore can then be smelted into ingots (using the Mining skill) and the ingots can then be used to craft various items, such as armour (using the Blacksmithing skill).

To mine ore you must have either a shovel or a pickaxe in your possession. Double-click on the pickaxe or shovel and then, when the targeting cursor appears, click on a mountainside or a cave wall. If successful, you will mine either a small, medium, or large pile of ore, dependent upon a number of factors. The known ore types, in order of their prevalence, are Iron (the most common), Dull Copper, Shadow Iron, Copper, Bronze, Golden, Agapite, Verite, and Valorite.

The rarity and chances of finding various ores varies directly with the skill level necessary to mine it. The more rare the ore, the higher the skill level necessary to mine it.

To smelt ore into ingots, find a forge. These usually appear as cylinders with hot coals on top, next to an anvil. You can find them outdoors in some mining regions, or in public access houses that sport a Blacksmith sign. Double-click the ore and your cursor will turn into an aiming circle. You will be prompted to either smelt the ore, or combine it with another pile of ore. Move the circle to the top of the smelter and click. As your mining skill increases, more and more of the ore will become ingots.

Musicianship.

Double-click on your instrument. A music sample will play if you succeed, an ugly noise will occur if you fail. This skill is also checked automatically each time you try to use one of the three specialized bard skills, Enticement, Peacemaking or Provocation.

Parrying.

If you are using a shield, this skill is checked automatically each time you are attacked. If successful, your attacker may miss his attack.

Peacemaking.

This is a musical skill. Use the skill, then click on your musical instrument (or the game will remember the last instrument you played). If you are successful, all fights in the immediate area will stop, at least for a moment.

Poisoning.

Use the skill, and then click on a poison potion, then click on the food, drink or bladed weapon you wish to poison.

Remove Trap

The skilled rogue will be able to disarm traps using the Remove Trap skill. In order to begin learning the art of removing traps you must first demonstrate proficiency at Lockpicking and Detect Hidden. You must have a base level of 50 skill in both of those skills before you can begin your training in this area. To use the Remove Trap skill, simply use the skill from the skill list, and target the item that you wish to disarm. If you are successful in your attempt, you will disarm the trap. Failure to disarm the trap yields the possibility of setting off the trap. The higher your skill level, the more difficult the trap you can disarm. You must be very careful when using this skill, because it can be quite a risky proposition. To disarm traps, you must be quite nimble, and will find that wearing gloves makes this process much more difficult.

Snooping.

This skill is checked automatically whenever you try to open another character's Backpack. Snooping just allows you to see what someone else is carrying—Stealing skill is required to actually steal something. Although not actually illegal, other players tend to react unfavorably to snoops.

Spirit Speak.

Use the skill. If successful, you will be able to understand the speech of any manifested spirits in the area.

Stealing.

There are three ways to use stealing.

- If you're trying to steal something from another character's person, you can Use the Stealing skill, then click on the PC. If successful, a random object will be transferred from his pack to yours.
- If you wish to steal a specific item from another character, you must first open his pack using the Snooping skill, then drag an item from his Backpack to yours. This operation is significantly more difficult than the other kinds of stealing, in addition to requiring more skill checks.
- If you are just trying to slip something left out in the open into your inventory, and it belongs to someone else, the Stealing skill allows you to do so unobtrusively.

In all cases, stealing is illegal, and if you're caught trying it in a civilized area guards will be called. In the wilderness, being caught Stealing will cause you to be flagged as a criminal.

Should you wish to excel in the art of thievery, you will have to join the thieves' guild. The thieves' guild will allow you to steal from other PCs.

Stealth

This skill allows a skilled rogue to move while hidden in the shadows. In order to begin to learn this skill, you must be very accomplished in the art of hiding while stationary, and you cannot begin to learn the methods of stealthy movement until you have a base of 80 skill in Hiding.

Swordsmanship.

This skill is checked automatically whenever a weapon of the appropriate type is used in combat. Swordsmanship is your skill with slashing weapons, including butcher knife, cleaver, skinning knife, most axes (except the pickaxe or war axe), bardiche, halberd and all swords.

Tactics.

This skill is checked automatically whenever you're in combat. Tactics is a general offensive skill that increases your effectiveness in combat regardless of your mode of attack.

Tailoring.

This skill is used to make a large number of objects and materials.

- Double-click on flax or cotton, then click on a spinning wheel to make thread.
- Double-click on wool, then click on a spinning wheel to make yarn.
- Double-click on thread or yarn, then click on a loom to make cloth.
- Double-click on scissors, and then click on hide to make cut leather.
- Double-click on scissors, and then click on cloth to make bandages.
- Double-click on a sewing kit, then on your supply of cloth or leather, to open a window displaying different clothing items that may be made. (Items will be displayed only if you have sufficient cloth or leather to make them.) Select the item you wish to make, and if successful it will appear.

Taste Identification.

Use the skill, and then click on the food or liquid you wish to taste. If successful, you will be told what kind of potion it is (if the object is a potion) and whether or not it's poisoned (if it's not a potion).

Tinkering.

Tinkering is one of the more involved skills in the game. Tinkers can make tools for other professions, and they can also make clocks, sextants and trap containers.

To make tools or clock/sextant parts you need a set of tinker's tools. Double-click on the tinker's tools, then on your supply of metal or wood. A window will open displaying the items you can make from the raw materials available (either wood or metal).

To make a clock: make gears and springs from metal, make a clock frame from wood. Combine gears with sticks to make an axle with gears, and combine axle with gears with springs to make clock parts. Finally, combine clock parts with clock frame to make a clock.

To make a sextant: make hinge and gears from metal. Combine gears with sticks to make an axle with gears. Combine axle with gears with hinge to make sextant parts. Double-click on sextant parts to make a sextant.

To place a trap on a container you must have a chest or other container, a poison or explosive potion, and a small supply of metal. Use your tools on the container, and then click on the potion you wish to use. If successful, the container will become trapped and the potion used will affect the next person opening it.

Tracking.

Use the skill. You will be given a choice of tracking animals, monsters or humans. Click on your choice. If successful, and if a creature of the appropriate type has passed by recently, you will be told in what direction that creature can be found.

Veterinary.

Double-click on a bandage, then click on the animal to be healed. This skill works just like Healing, above, except on animals.

Wrestling.

This skill will be checked automatically whenever you attempt unarmed combat.

Skill cap

The maximum number of total skill points you can possess is 700 points. When you reach the skill cap, some skills will have to deteriorate before you can raise other skills.

Skill locking

If skills are not used over a prolonged period of time, they diminish. Also, as noted above, there is a maximum total number of skill points you can possess among all your skills. Thus, skill locking is created to help you manage your skills. You are able to manage your skills by setting each skill to one of three modes: raise, lower, or lock.

From your Character Window, click on Skills. On the far right of each individual skill there is an arrow pointing up. This means the skill is set to be raised. Click on it to cycle through the modes.

Raise

When a skill is set to Raise (arrow pointing up), this skill increases as it's used.

Lower

When a skill is set to Lower (arrow pointing down), this skill diminishes over time if not used. The reason you set a skill to Lower is because you're approaching the Skill Cap, and you prefer to keep improving certain skills at the expense of others.

Lock

When a skill is set to Lock (padlock instead of an arrow), this skill is not affected by the skill you employ, or fail to employ, in the game.

CHAPTER 11:

COMBAT

Peace / War mode

It is extremely easy to enter *Ultima Online* combat. (It is less easy to win). You must be certain the Peace/War toggle in your inventory is set to War. The default macro for toggling in and out of war mode is ALT+C. Now your chosen weapon (the one in your hands in your Character Window) is at the ready, and you will attack (rather than try to Use) anything - or anyone - you double-click on. You can toggle between War and Peace mode quickly by pressing the TAB key.

Any time you are attacked, you will counter-attack automatically, whether or not you're in War mode.

While in War mode, moving your cursor over another player, an NPC, animal or monster will cause that target to be highlighted in a colour indicating how attacking it will affect your Karma. The highlight will be one of three colours: red, gray, or blue. Attacking a character or creature that highlights red will improve your Karma, attacking a blue will lower your Karma, and attacking Grays has no effect on your Karma.

Reputation System

Karma

Karma is gained or lost on a sliding scale. At the top of the scale, much more noble deeds are required to raise it further, while only murder is a horrid enough act to take you to the very rock bottom of the scale. Karma helps to bestow title, which is useful for role-playing interactions with other characters.

These are some of the actions that will raise your Karma:

- Killing evil NPCs
- Killing monsters
- Giving gold and items to good NPCs
- Turning in the head of a bountied Murderer
- Casting helpful spells on characters with positive Karma

These are some of the actions that will lower your Karma.

- Being reported as a Murderer
- Killing good NPCs
- Killing dogs, cats, dolphins, horses, pack horses or pack llamas
- Chopping up corpses (Yes, this does apply to chopping up Murderer corpses in order to retrieve a head for a bounty. You might be famous but your profession is generally frowned upon).
- Casting helpful spells on monsters or evil NPCs
- Summoning Daemons
- Stealing
- Snooping
- Using the Poisoning skill
- Using the begging skill

Fame

Like Karma, Fame is acquired on a sliding scale. When you are already famous, you're expected to do more heroic (or villainous) deeds than normal folk.

These are some of the actions that will raise your Fame:

- Killing PCs who have higher Fame than you
- Killing NPCs who have higher Fame than you
- Killing monsters that have higher Fame than you
- Killing animals that have higher Fame than you
- Completing NPC escort quests
- Rescuing prisoners
- Generously giving gold and items away to good NPCs

These are some of the actions that will lower your Fame:

- Dying
- Fame decays with time (fame is fickle)

Versus Players

Reputation

Rules of Engagement

The main purpose of the Reputation system is to regulate combat between players, so that a player will think twice before attempting to kill or rob an inexperienced or law-abiding character.

Note that none of the caveats below apply to members of two adventuring guilds at war.

Colour Coding

If your heart is true, don't kill blue!

As involved as the Reputation system is, it all comes down to the statement above.

Characters (including NPCs, monsters and creatures) are all colour-coded according to their moral standing. This colour can be seen in the characters' names, and when you're in War mode the characters themselves will appear as this colour when you pass your cursor over them.

Blue characters are Innocent. Attacking blue characters will have a negative effect on your Karma.

Gray characters are Criminals or Aggressors. Attacking gray characters will have no effect on your Karma.

Murderers and aggressive monsters are red characters. Dispatching them can do nothing but improve your Karma.

Guildmates are green.

Members of enemy guilds are orange.

All of these colours are customizable in the Options menu.

MURDERERS

Anyone who attacks a Blue character is guilty of attempted murder. If the victim dies before the damage from a murderous attack is healed, his attacker is guilty of murder, regardless of whether he actually administered the killing blow. This includes damage inflicted by pets, magic, or as a direct result of bardic abilities.

A murdered character can elect to report his murderer(s), and can also apply personal funds towards a bounty on their heads (literally).

If you are reported in five or more successive murders, you are considered to be a murderer, and you will highlight red to other players. Also, those viewing your name will see it as, "The Murderer John Doe." The Murderer title replaces any other title you may have earned.

If a murderer is caught and killed, his head can be taken by using a knife or bladed weapon on the corpse. The head can then be delivered to any town guard for any reward that may be due (just drag the head onto the guard).

Murderers are killed instantly by town guards if they try to enter town. Also, any character who dies a murderer is assessed a substantial loss to stats and skills.

For every eight hours of in-game time that pass without attacking an innocent, the murderer's "murder count" is decreased by one. This count is a **short term count**. When the "murder count" drops below five, the murderer is no longer a red character. Be warned, players who continually murder will become known as long time murderers and will never be able to revert back to being blue. A **short term** murder count determines whether your character will incur stat loss on death.

The **long term** murder count accumulates exactly the same way as the short term one (if you get reported for murder the counter goes up one). These counts decay at one per 40 hours instead of one per 8 hours. Once you have 5 long term counts, your character will be red, but this counter has nothing to do with stat loss. It only makes your character red. There is no way to know what your long term counter is unless you keep track of your kills manually.

You may determine your current status in the world by saying "I must consider my sins." You will receive a response which will give you your current status.

- If you have no short term murder count, and you are not currently red, you will see a message which states, "Fear not, thou hast not slain the innocent."
- If you have been reported for murder, but currently have no short term murders in your count, you will see the message, "Fear not, thou hast not slain the innocent in some time."
- If you have less than 5 murders in your short term murder count, you will see the message "Although thou hast slain the innocent, thy deeds shall not bring retribution upon thy return to the living."
- If your short term count is over 4, you are liable for stat loss, you will see the message "If thou should return to the land of the living, the innocent shall wreak havoc upon thy soul."
- If you are permanently red, with no chance of ever going blue again, you will get "You are known throughout the land as a murderous brigand.". If you receive this message in a blue colour you will not have stat loss when you resurrect after dying, if you receive this message in a red colour then you know your short-term murder count is still over 4 and you will suffer stat-loss if you resurrect.

Criminals

Citizens of Britannia can defend themselves from criminals. Criminal actions include thievery and assault against a blue PC or NPC (including hirelings and pets of blue PCs). Looting a dead body is also considered a criminal action, unless the body belonged to a criminal, murderer or member of an enemy guild.

If you are flagged as a criminal, you highlight gray. Any town guard will kill you on sight, and blue characters can attack you without penalty to Karma. For some criminal actions the criminal flag lasts only a short while. If you loot a body, or launch a non-lethal attack on an innocent, your criminal flag will last only a few minutes. However, if you steal from another PC, you will remain a criminal to that PC until the next time you die.

Aggressors

Although it is not illegal to attack criminals and murderers, it is also not illegal for unsavory types to defend themselves against unprovoked attacks. The first person to land a blow in combat is considered the aggressor in that combat, and any attacked party can defend themselves against any aggressor without fear of Karma repercussions. Thus, if you are attacked by Sheila the Murderer and she kills you, her Karma falls, and you can report your murder. However, if you attack her hoping for a bounty and she kills you, you cannot report the murder, because you were the aggressor.

A combat is considered to last until one of the opponents dies, or until about two minutes after the last blow. If you break off combat for more than two minutes, neither party will be considered the aggressor until one or the other launches a new attack.

CHAPTER 12: DEATH

It's said that the only things certain are death and taxes. In *Ultima Online* death is certain (or very close to it), but fortunately it's not permanent. (Only Lord British knows about the Britannia tax situation).

When your character is killed in the game, you will become a ghost. As a ghost you can be resurrected without any loss to your statistics or skills by finding a healer, a shrine, or even a powerful player mage.

Murderers who are killed automatically lose up to 20% of all stats and skills (the exact effect depends upon how often and how recently they've killed, and the penalty cannot reduce them below starting levels), as cosmic "payback" for their evil deeds.

Being Dead

As a ghost, you leave most of your worldly possessions where you fall and wander as a spirit in search of resurrection (spell books, practice weapons and starting equipment will be with you when you resurrect). When your ghostly character gets to a shrine, a healer or a sufficiently powerful mage, you can be restored to life.

Note that while shrines and healers will automatically resurrect any ghost in their immediate area, a PC mage has to know you're there, and it's his own choice whether to help or not.

Shrines do you no good if you are a murderer. Shrines restore any other characters, but not murderers. (There are rumors of a so-called "Chaos Shrine" at an unknown location, where murderers are raised).

While you're dead you can pass invisibly, or you can "manifest" so that others can see you. Your ghostly character will be invisible if you're in Peace mode and visible in War mode. A ghost can pass through doors and certain other objects, but not through solid walls. If you try to communicate while in spirit form, anything you try to say will appear to the living as inarticulate wailing. Characters who possess the Spirit Speak skill can try to understand your moans. Ghosts cannot directly affect the physical world in any way. They cannot use any skills or attacks. Manifested ghosts do sometimes frighten NPCs.

Healers

Healers can resurrect you when you die. Most wear brown robes and you can find them in Healer shops in town. When you enter, they will ask you if you wish to be healed or if you want to remain a ghost. Take your pick. If you are a criminal or a murderer, however, the healer may refuse to help you.

When you're a new player you can also use healers to heal your non-fatal injuries.

Wandering Healers

Some healers wander the countryside, performing their good deeds in the manner of the more settled healers.

Shrines

You can find Shrines in most cities and towns. If you enter a Shrine as a ghost you will automatically be resurrected.

CHAPTER 13: PARTIES

This refers to informal collections of players who join with one another to perform tasks together during a play session. This can include hunting parties, or even mining parties. The idea is to establish mutual protection and support.

Forming a party

To form a party, a leader will need to be selected. The first person to invite other members into their party will be considered the leader. In order to bring up your Party menu, you will need to click on your character profile. You will be asked if you wish to view the Party menu, or edit your character profile. Select the Party menu option. When you wish to form a party, use the invite button to ask another player if they wish to join. If that person is not in another party, they will be able to join your group. Should they accept your offer, you will have formed an adventuring party.

Leaving a party

To leave a party press the Leave Party button on the Party menu. The leader of the party will also be able to dismiss party members. The Leave Party button will bring up a targeting cursor for the leader. By selecting the player, or their status bar in the Party menu, the leader will eject that person from the party.

Communication within the party

In order to facilitate good teamwork between members of the group, the party system will allow for communication within the party, even over long distances. By selecting the party tell button in the Party menu, members will be able to send out messages to all members in the group. Typing a "/" before speech will achieve the same results.

Sharing Fame and Karma

Players in a party will be able to share karmic and fame gains equally when a member of the party does something which would normally change their fame or karmic status.

Spells

Beneficial spells will be able to be cast on party members within range by targeting their status gump in your Party menu.

Looting

Party members will have the ability to allow other party members to loot their corpses. To give other members this option, click on the loot button next to their name in the Party menu.

CHAPTER 14:

HIRELINGS AND PETS

Britannia is a land where it always pays to have a few friends at your side. If no friends are available when you need them, you can always buy some.

Pets and hirelings can perform a wide variety of tasks, but they're most useful as guards. They can guard houses, ships or belongings you may have to leave exposed. They can also guard your possessions while you're dead and seeking resurrection. While you are in battle, they can fight by your side.

Hirelings

NPCs of the following types will sometimes consent to work for PCs: peasant, pirate, sailor, thief, bard, beggar, gambler, brigand, warrior, mercenary, magician servant, fighter, paladin and ranger. To offer an NPC employment, use the words "hire", "mercenary", "servant", or "work" in conversation.

Hirelings charge 10 to 80 gold pieces per day for their services, depending on how specialized their skills are. Peasants and beggars come cheap; paladins and rangers don't. Pay hirelings by dragging gold over them. The further in advance you pay your hirelings, the more loyal they will be (and the longer they'll stick to their posts in your absence).

Pets

Horses, dogs and cats (and sometimes more exotic beasts) can be purchased. Many wild animals can be caught and trained. Most natural animals and even a few monsters can be trained, but some are much harder to train than others. Creatures can also be summoned. Summoned creatures assume the karma of the caster.

Naming Pets

If you are the owner of an animal, you can give the animal a name. Just click on the pet and then drag off of it to open up its Character Window. Enter the name you choose in the appropriate field. An animal must be given a name before it can obey commands.

Giving Orders

You give a pet or hireling an order by saying its name, followed by the command. For example, "Fido come" or "Brutus attack". Pets and hirelings may refuse to attack creatures much more powerful than they. Also, NPCs of relatively law-abiding professions may refuse to attack PCs or NPCs unless provoked first. Pets and hirelings respond to the following commands:

- Come** Summons the pet or hireling to your location.
- Drop** Drops everything it's carrying to the ground.
- Fetch, Get, Bring** A targeting cursor will appear. The pet/hireling will bring you the object you click on.
- Follow** A targeting cursor will appear. You can click on yourself or someone else. The pet/hireling will follow the person or creature indicated. If you give the command "follow me" the pet or hireling will do so with no specific targeting necessary.
- Friend** A targeting cursor will appear. Click on the character you wish to mark as a friend. This character can then freely approach any object or area the pet/hireling is guarding, just as you could. Furthermore, the pet/hireling will follow all the friend's orders just as it would one of yours.
- Guard** A targeting cursor will appear, allowing you to click on the thing, place or person to be guarded. If you give the command "guard me", the pet or hireling will do so with no specific targeting necessary. The pet/hireling will stay near its indicated assignment, warn off anybody who approaches, and attack anything or anybody that attacks or tries to use the guarded object.
- Kill, Attack** A targeting cursor will appear allowing you to indicate the creature to be attacked. Depending on the creature's toughness and the pet/hireling's loyalty, it may refuse to attack.
- Patrol** If you have ordered a pet or hireling to guard two or more things, you can command it to "Patrol" between the places or objects. If one or more of the objects being guarded is mobile, it may be dropped out of the Patrol rotation if it moves too far from the others.

Report

Obviously, this command applies only to hirelings. Hirelings will report how they feel about their job, whether they are following someone, and who, and a list of anything they may be guarding at the moment. (A successful use of the animal lore skill can give you an idea of a pet's happiness and loyalty level.) Ranging from mutinous to faithful, the responses to the report command and indications given by the animal lore skill are as follows:

- "confused"
- "extremely unhappy"
- "rather unhappy"
- "unhappy"
- "content, I suppose"
- "content"
- "happy"
- "rather happy"
- "very happy"
- "extremely happy"
- "wonderfully happy"

Transfer

A targeting cursor will appear. Click on the character you wish to mark as the new owner. You will no longer have control of the pet. This is commonly used in the sale of pets to other players.

Stop

Cancels any current orders to guard or follow.

Mounts

Horses, llamas and ostars are special types of pets. They provide another method of transportation in Britannia. To ride a mount, simply double-click on the animal you've purchased or tamed. Be sure that you are not in "war-mode" or you will attack the mount instead of riding it. You will appear astride it and your normal walking/running movement will control that of your mount. The mount itself can get tired and run out of stamina. You will receive a message that your mount is tired when this happens. Just get off and wait for it to rest, and check if it needs to be fed. When you wish to dismount, simply double-click the mount again, and you will appear standing beside the animal. Note that you must dismount in order to feed your mount. Mounts will buck you off if they lose all loyalty to their master.

Pack Horses

Certain horses can be bought to act as beasts of burden. Pack horses can extend the amount of weight you can safely carry and allow easier transportation of your hard earned goods.

Stabling

To stable a pet, find an animal trainer. If you say the word "stable" to the trainer, he will offer to keep the animal indefinitely in exchange for a small fee withdrawn directly from your bank account. You can only stable animals and other creatures - not hirelings, of course!

A targeting cursor will come up and you will be able to target the pet. Once you target it, the fee will be withdrawn from your bank account. If you don't have enough money, the pet will not be stabled. You can hit ESC to cancel the targeting cursor.

When a pet is successfully stabled, it is kept safely off screen, and fed the entire time that it is there, so it will not go wild.

Stables can become so full that they will take no further pets.

To retrieve stabled pets, find the animal trainer with which you left your animal. Then say "claim" to him. He will release all the pets that you have left with him back into your custody.

Questions about your pets

I logged out with my pet, but now it is gone.

Even if you log out in a safe area, pets can and will wander off, or even be killed. (Unless you are on a mount.) To ensure that your pets will be there when you come back, visit an NPC animal handler or stable, and ask him to “stable” your pets.

My pet is well fed and should be happy, but says it is annoyed.

If a pet is in guard mode, and a human comes near the guarded object or attempts to use it, the pet will become annoyed in response to a potential threat. This does not mean that it is going wild or becoming disloyal.

My pet suddenly stopped responding.

First, see if any commands will work for the pet. You should get some sound from the pet, even if it doesn't understand the command. If not, try having it follow you in the direction you came from.

I tamed a creature, but it still attacked me.

Some creatures, especially evil ones, can easily snap and turn on their masters. This change of loyalty can come at almost any time, so the best advice is be careful with your pet.

Feeding pets

Animals remain loyal if they're kept well fed, and they also increase in loyalty each time you successfully command them to do something. Feed a pet by dragging food onto it.

The best way to tell if your pet is well fed and happy is by using the animal lore skill. Your pet's loyalty is set to maximum every time you feed it. Feeding it lots at one time is not as beneficial as feeding it periodically over a long period of time. To feed your horse you must be dismounted.

Selling Your Pet

When you type “[pet's name] transfer” a secure trading window pops up, and your cursor changes into a targeting circle. Place it over the buyer, and click on him or her. Your pet will be in the upper window. When the buyer has placed the agreed upon payment in the lower window, the parties agree to the deal by clicking on the blue gem next to their name, and the deal is done.

CHAPTER 15: HIRING VENDORS

Hiring Vendors

Tavern keepers and innkeepers sell a document called “a contract of employment.” Buy this item, take it near a house you own, and Use it, and a vendor will be placed at that site.

Vendors charge an ongoing fee to remain active. The fee is a fixed amount, plus a percentage of the value of all the items in their stock. This fee comes out of the money you give the vendor, plus any money earned for you by selling items. If the money runs out, the vendor self-destructs, leaving your items in the corpse. Note that if the corpse decays, everything it had is gone.

Maintaining a Vendor

To add an item to your vendor's stock, you simply drag it into your vendor's inventory. You will then be prompted to “enter a price, description.” All items held by a Vendor must be priced for sale (the only exception is containers which contain items that are for sale).

If you wanted to sell a full set of plate armour for 1000 gold, you could enter “1000, Quality plate: a full set at a GREAT price!” “1000, plate,” or simply “1000.”

Owners can drag items around in a vendor's inventory at will.

Since all players can open containers in a vendor for browsing purposes, the owner can use containers to categorize a vendor's inventory.

If an owner gives gold directly to a vendor, the vendor will add it to his personal account. A vendor's personal account is checked first when collecting his daily bill, and is not included in the value of the shop when computing the daily cost of the shop.

CHAPTER 16: ADVANCED COMMUNICATION

Communication Crystals

Communication crystals allow people to communicate over long distances. They have a limited number of charges, and can be recharged by using gemstones. Communications crystals are sold by jewelers, as are the gemstones used to recharge them. The online chat feature is more robust, and allows for better communication.

Sending Messages

Each crystal can broadcast a message to several crystals. To link a crystal to another crystal, use the sender crystal and target the receiving crystal. Crystals can only be linked to other crystals. To activate a crystal, use the crystal and target it. It will turn red. Do the same thing to turn the crystal off (it will turn green again). When a crystal is on, it will send anything that is said around it to all crystals it is linked to. Each message sent to a crystal will cost a charge. For example, a crystal linked to three other crystals will use three charges each time something is spoken around it. If a crystal is on and inside a backpack or container, it will still send messages.

Receiving Messages

When someone sends a message, the receiver crystal will bark the sender's name and message if on the ground. If a player character carries the crystal, you will see the message at the bottom of your screen. Receiving a message does not use any charges on the receiving crystal.

Chat

Joining Chat

The first time you enter Chat on any given shard, you will be asked to supply an account name. Your account name must be unique - if someone is already using the name you want, you will be assigned a number. For example, if you're the fourth user on your shard to request the name Gandalf, you will get the name Gandalf4. You may accept this name or choose to submit a new one.

Once you have selected and confirmed an account name, you will be prompted to enter your name each subsequent time you enter chat.

Once you're logged on, you will be presented with a pull-down list of all currently active conferences. A conference is a "room" with up to 300 users. Click on the conference you wish to join, and you will be taken directly there, unless the conference is password protected (see below). If the conference requires a password, a window will appear in which you must enter the correct password to join. Once you are in a conference, you will be able to chat.

Chatting

Once you are in a chat conference, three fields will be visible.

The Input Field is where you compose your messages to post to the chat.

The Display Field is where the messages from all users are displayed (as well as any messages from the Chat system itself). This field can be scrolled back using the side scroll bar, to read earlier messages.

The User List Field is a list of all users currently active in that conference.

Resize Buttons are located at the center and bottom of the screen. The center button allows you to adjust the size of the Display Field, and the other fields will be automatically adjusted to conform. The bottom button allows you to adjust the size of the entire chat window, with the fields remaining in proportion to one another.

The Minimize Button minimizes the Chat Window within the UO playing screen.

The Close Button closes chat.

Commands

The following commands are available to anyone in any conference. These commands can be entered from the Input Field, or selected from a pull down menu.

- Message to Conference.** This is the default command, and requires no special code or command selection. Any message in the Input Field not recognized as a command will be posted to all users of the conference when e is pressed.
- Join Conference** (/join confname or /join confname password, where confname is the name of the conference you wish to join, and password is the password for that conference). Removes you from your current conference and takes you to the conference indicated.
- Send a Private Message** (/msg name text, where name is the user name of the person receiving the message, and text is the text of the message). Sends a private message to another user that only that user can see.
- Ignore a Player** (/+ignore name, where name is the user name of the person to be ignored). Allows you to ignore another user. Neither private nor public messages from that user will be displayed to you.
- Remove Ignore** (/ignore name). Removes a person from your ignore list so you can see his messages.
- Toggle Ignore** (/ignore name). Begins ignoring a person not previously ignored, or ends ignoring a person you had been ignoring.
- Emote** (/emote text, where text is the content of the emote). Displays a message as an *Emote*.
- Who is This Player?** (/who is name, where name is someone's user name). Displays the name of the character currently being played by that user. The user may disable this information.
- Show My Character Name** (/+showname). Allows other users to see the name of your current character by using Whois. This is the default status.
- Do Not Show My Character Name** (/showname). Disables other users to see the name of your current character by using Whois.
- Toggle Showing My Character Name** (/showname). Disables Showname if it is currently enabled, and vice versa.
- Add Receive** (/+receive) Allows you to receive private messages from other users (does not apply to users currently being Ignored). This is the default state.
- Remove Receive** (/receive) Disables your ability to receive private messages from other users.
- Toggle Receiving Messages** (/receive) Enables private messages if currently disabled, disables them if current enabled.

Creating and Operating a Conference

Any user can create a new conference. When you enter chat the first entry on the conference list is always "New Conference". When you click on this option you will be prompted to name the conference, and set a password if one is desired. Once the new conference is created, you will be taken directly to it.

You may also create a new conference from within an existing conference.

Create a New Conference (/newconf name or /newconf name (password)), where name is the new conference name and password is its password.

Moderator Commands

The creator of a new conference automatically has moderator (ops) status within that conference. Moderator status allows access to the following commands.

- Change Conference Password** (/pw password or /pw, where password is the new password for the conference). Changes the conference password as indicated. Using the command without specifying a password (/pw) will remove password protection from the conference.
- Kick Out of the Conference** (/kick name, where name is a user currently in the conference). Kicks a user out of the conference entirely. The kicked user can re-enter, unless the password is changed.
- Grant Speaking Privileges** (/+voice name, where name is a user currently in the conference). Gives a user the ability to post messages in the conference. Note that any time a user enters the conference, he has the ability to speak by default.
- Remove Speaking Privileges** (/voice name). Removes a user's ability to post messages to the conference.
- Toggle Speaking Privileges** (/voice name). Removes a user's ability to post if he has it, adds it if he doesn't.
- Add Default Voice** (/+defaultvoice). Allows everyone entering the conference to post to the conference. As the name suggests, this is the default state for a new conference.
- Remove Default Voice** (/defaultvoice). Makes it so that no one entering the conference can post to the conference.
- Toggle Default Voice** (/defaultvoice). Adds defaultvoice if it is disabled, removes it if it is enabled.
- Grant Moderator Status** (/+ops name, where name is a user currently in the conference). Gives moderator status to another user.
- Remove Moderator Status** (/ops name). Removes moderator status from another user.
- Toggle Moderator Status** (/ops name). Grants moderator status to a user who doesn't have it, or removes it from a user who does.
- Ban from the Conference** (/ban name, where name is a user currently in the conference). Removes a user from the conference.

CHAPTER 17: HOUSES

Home, sweet home... houses are a great way to store your worldly possessions. They also provide a safe haven in the harsh UO wilderness.

Types of Houses

Houses come in all shapes and sizes. The small, one-story houses come in five types: stone and plaster, wood and plaster, and wood with a thatch roof, brick, and fieldstone. All of these small-sized houses are the same size. However, the larger houses each have a unique size and style. Some are two-story brick houses with a large shop, fenced-in patio, a small stone keep, and a large tower. Castles are extremely expensive, and are more suited as the headquarters for a large guild than as a private residence. If you acquire the correct skills, you can create add-ons for these homes and decorate them. You can also create beds, tables, forges for creating armour, looms for making cloth to sew, and many other things to make the home more practical and inviting.

Purchasing a House or Castle

A player can have only one house per account, per shard. Houses are usually purchased from an architect, but provisioners are also known to sell houses and ships of the smaller sorts. If you're buying a large house or castle on behalf of a guild or other group, first get the other members to transfer sufficient funds into your bank account to cover the purchase. Because of the large sums involved in real estate purchases, architects can draw funds directly from your bank account. House deeds can not be stolen, and they will stay on your corpse if you die, unless you are a murderer. However, this also means that if you set them down in the open, meaning not inside of a container (chest, backpack, sack, pouch, etc.), they will decay almost instantly.

Selling your house to a broker

When you trade with an architect, a menu of house types and prices appears. Once you make and pay for your selection, you'll receive a deed for a house of that kind. If you wish to sell your house, you may find real estate brokers to buy your house deed from you.

When you come near a broker, if you have a house deed in your backpack, the broker will offer to appraise it or buy it.

If you say "appraise" to the broker, you will get a targeting cursor so you can target the deed you want appraised. The architect will tell you what price is fair for the deed.

Dropping the deed on the broker will sell the deed to him/her. The money you get will be placed in your bank box automatically.

Brokers may be found in the same places as carpenters and architects.

Selling your house to another player

Using the House menu, select Options, and Transfer a House to Another Player. This turns your cursor into an aiming circle. Next, target the person you wish to sell your house to, click on the person, and a Secure Trading window pops up. In the upper portion of the window will be the deed, along with the location and description of the house. The buyer then places the agreed upon payment into the lower window. When both parties are satisfied they click on the blue gem next to their names, and it's a done deal.

Building Your House

Once you have your deed, you'll need to select a site for your new domicile. Land outside of the cities in Britannia is free, as long as the king's right-of-way is respected. That is, houses may be built in any unoccupied location outside a city, except over roads.

To place a house, you must be sure you have a spot for your house free of obstructions - including rocks, trees, and plants - throughout the entire footprint of the house. There is also a 'buffer zone' around the house of five tiles north and south and one tile east and west that cannot contain these objects, other houses, or other dynamic objects such as friends or pets. This buffer zone is to insure houses do not block passage through their placement. The ground where you wish to place your house must be flat, as uneven ground will usually prevent the placement of a house. Houses cannot be placed in a justice region, or any region that is zoned for no housing.

Once you've decided where you want your house to be located, double-click the deed. A translucent outline of the building's walls will appear on screen with a targeting cursor within it. Once you've got the outline situated where you want it, click and the house itself will appear. If you cannot place the house, you will get the message 'A house can not be created here'. Either something is blocking the house or part of the house would not be on valid terrain.

When the house is created, make sure to lock the door(s). The key will appear in your backpack and a duplicate is placed in your safe deposit box. There will, of course, be no furniture (except for shops, which appear with the furnishing essential to their operation). Furnishings will have to be acquired and transported separately.

When you double-click on the house sign of your house, you will have a list of options pertaining to your home.

Naming Your house

When you place your house, there will be a bronze plaque hanging on the front. Double-click this sign to bring up your House Options menu. There is a check mark next to where it reads "Change this house's name!" When you click this, the menu will disappear and a message will appear on the lower left corner of your screen. The message will prompt you to type in a name you would like for your house. Once you type your name, hit enter and your name will appear on your house sign.

Friends Menu

Adding a friend

When you own a house, you may allow certain members to be friends of the house. Friends of the house highlight blue when in combat mode, and are allowed into "secure" containers. To add a friend to the house, click the check next to "Add a friend to the house". You will be given a targeting cursor. When you target a player and click your mouse, they will be added to the list of friends.

Removing a friend

If you no longer wish for someone to be a friend of your home you can use the remove a friend option. Click the check mark next to this option and this will bring up a list of the current friends. Click the empty box next to their name and then click the Remove Now box to remove them from the list.

Clear the friends list

This option allows you to erase all the friends that were added to a house. There is a window that will come up to confirm your decision to erase all friends from the house.

List friends

This option will display a list of all current "friends" of your house.

Co-Owner Menu

Co-ownership allows you to let trusted friends control some of the important functions in your house. Co-owners have access to all of the functions of a house, except for: re-deeding or transferring the house, adding the co-owners, and changing the house locks. You are allowed to designate up to eight characters to be co-owners of your house. A character may be a co-owner of only one house at a time.

Adding a co-owner

To add a co-owner to a house, click the check mark next to 'Add a co-owner to the house'. Your cursor will turn to a targeting cursor. Target a player and click you mouse, and they will be added as a co-owner of the house.

Remove a co-owner

To remove a character from your list of co-owners, click the check mark next to 'Remove co-owner'. This will bring up a list of all current co-owners of your house. Click in the empty box next to their name and then click the box labeled 'remove now.'

List co-owners

Clicking this box will list all of the current co-owners of your house, as well as whether they currently control a strongbox in the house.

Ban someone from the house

There may come a time when someone is no longer welcome in your home. If this should ever occur, you will have the option to ban them from your house. This will keep the character that you have deemed no longer welcome from entering into your home. There are two ways that you can ban someone. You may click the option "ban someone from the house" and a targeting cursor will appear. Once you click on this person, they are automatically placed outside from your home and added to the unwelcome list (banned list).

You may also say the words "I ban thee" to remove them. This too will bring up a targeting cursor and eject the player from your domicile.

Others that have been added to the list of friends of your house may also use this option.

View list of banned people

Using this option will bring up a menu of all the players that are no longer welcome in your home and cannot enter.

Lift a ban

This option is used in case you accidentally banned a player, or that a player that was previously banned, can once again walk into your home.

Eject someone from the house

If you want to kick someone out of your house, but not keep them from ever returning, you can use this option. This option works the same as banning a player and will eject them to the front door step.

If you do not wish to use the house sign for this option, you can say the words "remove thyself" and then target the player.

Others that have been added to the list of friends of your house may also use this option.

Owners, friends and vendors cannot be ejected from the house, but NPCs (non-player characters), monsters and animals can be ejected.

Options Menu If the house is Private

Transfer ownership of the house

This option must be used from outside of the house. When this option is used, it will bring up a targeting cursor. You may then target another player to transfer the ownership of the house to the player you select.

You can only transfer ownership to players who do not own a house already.

When you transfer a house, all the house keys that worked for the house no longer work, the locks are changed on the doors, and a new key is placed in the backpack and bank of the new owner.

Demolish the house & get a deed back

Using this option will bring up a window asking you if you are sure that wish to redeed the house.

If you redeed the house, the house will delete itself and a deed for the house will be placed in your bank box. Even if your bank box is full, the deed will still be placed within it.

If you are a murderer, the house deed will be placed within your backpack.

House deeds obtained from redeeding your house will be stealable or lootable off of your corpse.

If there is a guild stone attached to your house, you will not be able to redeed the house. The guild stone will have to be disbanded or teleported to a new house.

If there are any house add-ons, they will be deleted with the house.

Change the house locks

In order to use this option, you must be standing outside of the house.

You will also have to have a key that currently works on your door within your backpack.

This option will change the locks on the door, place a new key in your backpack, and place a new one in your bank box.

All of the keys that used to work for the house door, will no longer work.

Declare your building Public

This option only appears on Private buildings.

This option will allow for the owner and friends of the house to place vendors in the home.

This option also makes the front doors unlockable.

Options Menu If the house is Public

Transfer ownership of the house

Same as above

Demolish the house & get a deed back

Same as above with the exception. that the house may not be demolished while a vendor is working in the house. You will need to remove the vendor before the house can be turned back into a deed. Public houses are allowed vendors, but any vendor attached to the house will prevent demolishing of the house.

Change the house sign

Selecting this option will bring up a selection menu. In this menu will be all of the house signs in the game. The current house sign in use will have a check mark next to it. If you wish to change the house sign, all you have to do is check another one and click okay.

If you make your house private, the sign will change back to the default house sign type.

Declare this building to be private

This will allow the house to be lockable again. This option cannot be used if there are vendors attached to the house.

Home Security

Keys

If your house is private, you can lock your house door(s). If you want to give people access to your locked house, you'll need to make duplicate keys. There is a chapter in this manual devoted to the subject of keys. More pertinent to keys and homes are the following points:

To lock or unlock your door, you need only to double-click your key and then target the door.

If your door is locked, and you wish to enter, you do not have to use the key in the door. If the key is in your pack, you can double-click the door to open it. The game will give you a message confirming you locked the door. The door will be locked when it shuts.

Players can steal your key(s) and they can take them from your dead body.

Hidden Players in Your House

House owners and friends are able to instantly reveal anyone hidden in the house with the detect hidden skill regardless of skill level.

Unwanted Intruders

If a player steps into your house, and is not a friend of the house, they will be flagged criminal. If you kill this person, you will not receive a murder count.

Friends of the house will appear blue to you. Friends too can kill others in your house without receiving a murder count.

Locking Items Down

It is possible to lock a set number amount of items down in a house. The possible number of locked down items is listed on your house sign when you double-click it.

Once an item is locked down, it becomes too heavy for anyone to move it. This lets you decorate your house with the peace of mind that ruffians or petty chair thieves will not be able to wreck or steal your furniture.

To lock something down, say "I wish to lock this down". This will change your pointer into a targeting cursor. All you have to do is target the item and you will get the message that it has been locked down.

To unlock something, say "I wish to release this". Items cannot be locked down in front of doors.

Secure Containers

It is possible to make a set number amount of items secure in a house. The possible number of secure containers is listed on your house sign when you double-click it.

Only containers can be made secure.

When you secure an item, it locks it down. The item also is usable by all friends of the house. Players who are not friends of the house are not allowed to open and use this item.

To secure a container say, "I wish to secure this" This will cause the item to be locked down and then made secure.

To make a container no longer secure say, "I wish to unsecure this." The item will no longer be secure, but will remain locked down.

Limits on Locked Down Items and Secure Containers

Each type of house has a maximum number of items you can lockdown, and a maximum number of secure containers allowed on the premises.

House type	Max Number of Lockdown Items	Max number of Secure Containers
Stone-and-plaster houses	425	3
Field stone house	425	3
Small brick house	425	3
Wooden house	425	3
Wood-and-plaster house	425	3
Thatched-roof cottage	425	3
Brick house	1100	8
Two-story wood-and-plaster	1370	10
Two-story stone-and-plaster	1370	10
Tower	2119	15
Small stone keep	2675	18
Castle	4076	28
Blacksmith's shop	425	3
Clothier's shop	425	3
Miller's shop	425	3
Pickpocket's den	50	3
Weapon training hut	50	3
Large house with patio	100	8

Home Maintenance

When you have the key to your house in your backpack and double-click the door, this will refresh the house and all of its contents.

Houses generally will decay (delete themselves) if they have not been refreshed within 9-14 days. The range is wide depending on where your house is placed. Some areas have elements that put more stress on your house and will cause it to decay at a faster rate.

It is also advised that you not try and refresh your house once every nine days. It is possible that you may try and refresh your house before a server goes down for maintenance or for any other unexpected reasons. If this occurs, the server may not back up the information that the house was refreshed and when you next log in, the house may have decayed. For this reason, we suggest refreshing your house at least once every two days if your schedule will permit.

Trash Collection

A portion of house maintenance is throwing out the unwanted trash. To place a trash container in your home say, "I wish to place a trash barrel".

Adding items to a trash can past the container limit will cause the instant deletion of everything in the trash can. If you do not fill the container limit, the items will delete themselves within 5 minutes of when the last item was placed in the trash.

CHAPTER 18: SHIPS

Ocean-going ships in Britannia are quite formidable. Even the smallest will hold a few characters comfortably, while the largest ships can easily accommodate a dozen or more.

Buying a ship

Ships are bought and built much like houses. A ship is purchased from a shipwright, who gives you a deed that must be used by the ocean shore to build the actual ship. Make sure that when you build your ship, you do so in a location from which you can actually reach the ocean! Ships cannot, for example, pass bridges. When your ship is created, the key will be placed in your Backpack and a duplicate placed in your safe deposit box for safekeeping. You can lock the gangplank to your ship. To come aboard or disembark from a ship, click on the side of the ship to extend the gangplank (you can retract the gangplank by clicking on it again). Double-click on the gangplank to come aboard, or just walk off it to go ashore. Any PC on board (see Navigation, below) can command ships, and they can be boarded from any other nearby ship; therefore it is vital for you to hire enough guards to protect your ship from strangers when you're not around. Ships can carry cargo. The cargo hold is a container, like a huge Backpack. You can put lots of stuff in a cargo hold, but you can't stay in it yourself. All characters on board a ship stay out on the decks for the duration of the trip.

Types of Ships

There are many ships available in UO. Some types of ships may be added to the game over time, and some may be removed. Please check the Playguide on the website (www.uo.com) for the latest update of available ships.

Naming your ship

You can name your ship by telling your Tillerman "Set Name Text" where "Text" is the name you select. The Tillerman can also "Remove Name" or tell you the ship's name if you say "Name".

Navigation

Your ship is steered by a Tillerman, an NPC who never leaves the ship's helm, and are known for their salty stories. Tillermen are not fighters, and will obey the orders of anyone better armed than they are (i.e., any PC on the ship). Specifically, the Tillerman will respond to commands from the character (PC or NPC) closest to him. It is a good tactic in battle to station an NPC guard next to the Tillerman to prevent him from obeying orders shouted by passing enemies.

Commands

The Tillerman will respond to the following commands:

- **Unfurl sail, forward** (moves ship forward) (ALT 8).
- **Furl sail, stop** (stops current ship movement) (ALT 5).
- **Drop anchor** (ALT 3).
- **Raise anchor** (toggles ship movement on or off) (ALT 1).
- **Turn left, port, left, drift left** (left turn) (ALT 4).
- **Turn right, starboard, right, drift right** (right turn) (ALT 6).
- **Backwards** (ALT 2).
- **Forward left, forward right, backward left, backward right, back left, back right, backward, back** (move as indicated).
- **Turn around, come about** (turn around and proceed).
- **Slow forward, slow left, slow right, slow backwards, slow back** (move as indicated).
- **One forward, one left, one right, one backwards, one back** (move slightly in the direction indicated, then stop).

These commands are for close maneuvering, but for long voyages it's much easier and more efficient to chart out a course on a map. Some of the commands above have pre-programmed macros to save you typing time. These hot-key commands are indicated above. All the numbers listed for these macros apply only from the numeric keypad.

Charting A Course

A masterless ship faces a dark fate indeed. If all PCs on board log off in the middle of a ship voyage, and don't come back soon, their ship is in serious danger. If you planned ahead and set a good course that ends near a coastline, you'll be all right; the ship will probably complete its voyage safely, but you'll appear on the last land you touched before you began your voyage. However, if you didn't leave orders that will take your ship near shore, your ship will founder and eventually sink if left unattended for several hours (real time). In this case, the ship is lost with all cargo and NPCs, and all PCs that were aboard will appear back at the last land they set foot on the next time they log on. Yes, it's entirely possible to be "stranded on a desert island" with no way off except to wait for another ship to pass by. Even if left safely at anchor, a ship could well vanish without a trace if its master is gone for too long. This is very unlikely to happen in a crowded port, but much more common on wild stretches of coastline. It is not sufficient to simply leave a few NPC guards on duty (though this is a wise precaution to take for other reasons); an abandoned ship must be checked periodically by a PC (not necessarily the owner) to keep it from decaying away.

Map Navigation

Any map, including maps drawn by PCs with the cartography skill, can be used to navigate on any body of water it shows. Each map has a button you can click on to chart a course. Once you're in navigational mode, you can click on the map to stick "pins" in it. The ship will move from one "pin" to the next, in the order set. You can remove a "pin" by clicking on it and dragging it off the map, and the course will automatically adjust itself around the change. The ship will move only in a straight line between "pins." It will not automatically skirt a coastline - you must set a course that takes it around the coastline. If you try to chart a course that ends on land or passes over land, your ship will run aground and you will not be able to proceed any further on your charted course. You will need to plot a new course that avoids the obstacle.

Following a charted course

Once you've charted the course, give the map to the Tillerman. He will immediately give it back. While on the voyage, he will respond to the following additional commands:

- **Start** (embark along the charted course and continue until finished or stopped).
- **Continue** (resume course after a stop).
- **Goto #** (where # is the number of one of the pins - the ship sails directly to that point, then continues on with the remainder of the plotted course).
- **Single #** (where # is the number of one of the pins - the ship sails directly to that point, then stops).
- **Nav** (the Tillerman will tell you which pin on the map you are currently in route to, if any).

Dry Docking

When you wish to leave your ship, you are encouraged to take it with you. If you have the key to the ship, close any open planks and double-click on the tillerman while you are on shore. You will be asked if you wish to dry dock the ship. If you dry dock your ship, you will receive a miniature boat in your backpack. You may use this miniature boat as you would a boat deed and place the boat in the water when you are ready to use it again.

CHAPTER 19: KEYS

The secret to safely and profitably using your house, boat or chest is properly managing their keys.

Using key rings

Key rings allow you to store many keys in one item, and prevent fumbling for a specific key among many - any time you use a key ring on a lock, it automatically tries every key it holds. To put a key into a key ring, drag the key onto the key ring. To try to unlock something with a key ring, use the key ring and target the object to unlock. It will try every key on the key ring on the lock. To dump out all of the keys in a key ring into your Backpack, use the key ring and target the key ring itself.

Making duplicate keys

You can buy blank keys and key rings from a locksmith or provisioner. Use your original key on the blank to create a duplicate key. Making duplicate keys is an action based on the tinkering skill, so it's advisable to acquire a reasonable familiarity with tinkering before you plan on making extra keys.

CHAPTER 20: GUILDS

Ultima Online encourages players who wish to work together. Player associations, or guilds, are broken up into two types. PCs can be in one professional guild and one PC guild.

Professional Guilds

Each of the major towns in Britannia is home to one or more guild halls. To join a guild you must go to the guild hall, find the guild master, and pay him 500 gold for membership in the guild. You can only belong to one guild at a time. These Guilds are currently accepting new members:

- Guild of Arcane Arts
- Merchants' Association
- Bardic Collegium
- Society of Thieves
- Society of Clothiers
- League of Rangers
- Order of Engineers
- Mining Cooperative
- Guild of Healers
- Warrior's Guild
- Maritime Guild
- Fellowship of Blacksmiths
- Thieves' Guild

Becoming a member of the thieves' guild has extra benefits to the thief PC. Only by joining the thieves' guild can a PC steal from other PCs. Thieves who are not members of the thieves' guild may only steal from NPCs, containers, monsters and certain animals.

Player run guilds

There are also PC organizations called guilds. These are groups of PCs banded together for a common purpose, or for mutual protection. See "Guild Halls" on the web site (<http://town.uo.com/guilds/>), for a complete list of currently active PC guilds and groups. To be recognized as a guild, you will need to purchase a guild stone in the game.

Guild stones

Guilds can organize so their existence is recognized by the game itself. To become a "recognized guild," at least one member of the guild must own a house, and the guild must also invest in a "guild stone," an expensive object obtainable from provisioners.

Guild stone Usage

When you buy a guild stone you obtain a deed. This deed must then be used to place the stone by the door of a house. The person who places the stone must also be the owner of the house, and may not already be a member of a "recognized" player guild. Only one guild stone is allowed per house. When a guild stone is placed, a name must be entered for the guild. Unlike character names, guild names must be unique on their shard. The first person to touch (click on) the guild stone becomes the Guild Master. Guild stones give players and Guild Masters access to a number of specialized functions related to the administration of their guild. Usage of the Guild Stones:

- Recruit someone into the guild.
- View the guild roster.
- View the guild charter (if any).
- Declare fealty. (You may choose one guild member to whom you are loyal. The person to whom the most members declare fealty is recognized as the guild master. Until you declare fealty, you are assumed to be loyal to the current guild master).
- Toggle whether the guild abbreviation will be displayed along with your name when players click on you. The default is Off.
- Resign from the guild.
- View a list of current candidates for membership.

Guild masters may, in addition to the above functions, use the guild stone to:

- Open guild master options.
- Set the guild's name. (Can only be used once every seven real-world days).
- Set the guild's abbreviation. (Can only be used once every seven real-world days).
- Set the guild's charter.
- Dismiss a member.
- Access the War menu (see below).
- Accept a candidate seeking membership.
- Refuse a candidate seeking membership.
- Set the guild master's title.
- Grant a title to another guild member.
- Return to Main menu.

Guild members will be notified automatically of name, title and membership changes when they occur, or when the member next logs on.

Both the guild name and the guild abbreviation must be unique within the shard.

Guild stone changes can be saved with the continue button.

The Guild Stone menu can be closed with the cancel button.

Joining a guild

To join an existing guild, you must first be recommended as a candidate for membership by a current member using the "Recruit Someone into the Guild" option at the Guild Stone. The recommendation must then be accepted by the guild master, then the candidate must touch the guild stone himself to become a full member. The guild stone can keep a record of no more than twelve recommended candidates at any one time.

Guild wars

Guild war is a way for those who enjoy player vs. player combat to indulge their tastes without risking harm to their own characters' karma or ruining the fun of innocent bystanders. The War menu gives the guild master access to the following functionality:

- Declare war by guild name search. This will allow the GM to declare war on a guild. Simply enter the name of the guild or a few words from a guild's name and you will be able to declare war on them. When you declare war, you are really inviting another guild to engage in war with you, they must accept your invitation for you to really be at war with them.
- Accept war invitations. Just as you can declare war on another guild, so too can they declare war on you. If you wish to accept invitations to war, select this option.
- Refuse war invitations. If you are uninterested in pursuing war with a certain guild, you may refuse their invitation.
- Rescind war invitation. If you wish to remove your war invitations, you may do so by selecting this option.
- Declare peace. It takes two guilds to war, but only one to declare peace. When you wish, you may declare peace and the guild war will stop.

Chaos and Order Guilds

Order Guilds operate under the direct sanction of Lord British, while Chaos Guilds are sponsored by Blackthorn. A guild master may declare his guild a Chaos or Order Guild if the guild master is a Lord or Lady, i.e., if he or she has a fame of the highest level. Once a guild is declared for Order or Chaos, all members of the guild with fame of Lord or Lady status receive an Order or Chaos shield (these shields are extremely powerful defensive magic items). Those who have not attained this exalted fame are cast out of the guild, nor can anyone of inferior fame join an Order or Chaos guild. More importantly, all Order Guilds are considered to be in an automatic and continual state of war with all Chaos Guilds, and vice versa (see "Guild War," above).

CHAPTER 21: MAGIC

Spells can be the most destructive weapon in the world of UO. It is a good thing that spell casting is not an easy skill to acquire. Magic spells can also be used for non-militant means, such as healing. For those who choose the path of the magic user, we have included the following information on the subject.

Casting Spells

Spells are ranked into circles (First Circle through the Eighth Circle) that signify their power and the magic ability required to cast it. There are two ways to cast spells in *Ultima Online: Renaissance*.

Casting from a Scroll

Magic spell scrolls can be purchased from magic shops. Eventually, as your abilities as a magic user increase, along with your abilities to inscribe scrolls (more on that later), you can create your own scrolls from the spells in your spellbook.

You cast a spell from a scroll by reciting it. In order to recite a scroll, you must choose a scroll from a circle no more than two circles above your own spell circle ability. This means characters who have only minimal magery skill can recite up to Second Circle scrolls, while a mage whose highest circle spell is the Sixth Circle can recite up to Eighth Circle scrolls. Also, casting from a scroll requires less of your magic power – your mana – than it would if you cast a spell from a spell book. This manner of casting requires no raw magic ingredients (reagents). The bad news is you can cast a spell from a scroll only once.

Casting from a spell book

To cast a spell from your spellbook, you must first find the spell and transcribe it into your spellbook. You also need the required reagents in your inventory. Your ability to cast a spell is based on the circle of the spell, and your Magery skill. Spells of the higher circles are more likely to fail, but when they succeed they will likely improve your Magery skill. Spells in the very low circle, relative to your skill, may never be miscast, but they won't help you to improve.

Open your spellbook and double-click on the spell you wish to cast. On targeted spells, your cursor will change into crosshairs. Click on the target for your spell to cast it. The reagents needed for the spell will be automatically removed from your inventory. Your hands must be free of weapons or tools in order to attempt to cast. You can carry your spellbook in your hands, or keep it safely in your Backpack.

Reagents

Reagents are the raw materials that Mages and Alchemists use for their magic spells and potions, respectively. The following are the more common and useful reagents. There are others, but no use has yet been found for them. You can find a complete listing of reagents at <http://uo.stratics.com>.

Black Pearl

Black pearl is a common reagent in spells that involve travel, distance, propulsion or projection.

Alchemy Uses:

An alchemist may be able to manufacture a potion of refreshment using three black pearls. With additional skill, he or she may also be able to make a potion of total refreshment using five black pearls.

Mage Uses:

Black pearl is used frequently in spells involving magical travel, and also in combat spells.

First Circle:	Magic Arrow
Third Circle:	Fireball
Fourth Circle:	Fire Field, Lightning, Mana Drain, and Recall
Fifth Circle:	Blade Spirits, Dispel Field, Mind Blast, and Poison Field
Sixth Circle:	Energy Bolt, Explosion, Mark, and Paralyze Field
Seventh Circle:	Chain Lightening, Energy Field, Gate Travel, Mana Vampire, and Mass Dispel
Eighth Circle:	Energy Vortex

Location:

Black pearl can be found in any shop selling reagents.

Blood Moss

This reddish fungus is found mainly in marshlands and swamps. It is known to focus the qualities of speed, animation and locomotion.

Alchemy Uses:

Blood Moss is used to increase dexterity and stamina. An alchemist may produce an agility potion using a single blood moss, or a novice alchemist can make a stronger version using three blood moss.

Mage Uses:

First Circle:	Clumsiness
Second Circle:	Agility and Magic, Untrap
Third Circle:	Magic Lock, Telekinesis, Teleport, Unlock, and Wall of Stone
Fourth Circle:	Recall
Fifth Circle:	Incognito and Summon, Creature
Sixth Circle:	Invisibility, Mark, and Reveal Hidden
Seventh Circle:	Chain Lightening, Mana Vampire, Meteor Swarm, and Polymorph

Location:

Blood moss can be found in any shop selling reagents.

Garlic

Few kitchens in Britannia are without this humble allium. Legends of its protective powers extend back through the mists of time, and in modern magical practice it is used in spells which protect the caster or a target and ward off or dispel a danger or evil. For purposes of magic, the bulb of the plant is washed, peeled and ground into a paste.

Alchemy Uses:

Potions made of garlic are used to cure poison. Anyone can create a lesser cure potion with a single bulb of garlic, which is capable of curing lesser poison. A serious alchemist can create a stronger version using three bulbs of garlic, which is capable of curing regular poison. It takes an expert alchemist, and five bulbs of garlic, to produce a greater cure potion capable of curing any poison.

Mage Uses:

Garlic is used in most spells involving someone's health.

First Circle:	Create Food, Heal, Reactive Armour, and Weaken
Second Circle:	Cure, Magic Trap, and Protection
Third Circle:	Bless, Magic Lock, and Wall of Stone
Fourth Circle:	Arch Cure, Arch Protection, Curse, and Greater Heal
Fifth Circle:	Dispel Field, Incognito, Magic Reflection, and Paralyze
Sixth Circle:	Dispel and Mass Curse
Seventh Circle:	Mass Dispel
Eighth Circle:	Resurrection

Location:

Garlic can be found in any shop stocking reagents. Provisioners also frequently stock some garlic.

Ginseng

As a magical reagent, ginseng focuses the powers of healing and enhancement. However, its bitterness belies its restorative nature. Before it can be used in magic ritual, the root of the plant should be boiled in the freshest water, cooled and brought back to a boil in fresh water no less than forty times. With the last boiling, it is transformed into a heavy, strong-smelling syrup.

Alchemy Uses:

Ginseng potions are used to magically heal a person's wounds. A lesser-healing potion using a single ginseng root is easy enough to be produced by anyone. An alchemist can make a stronger version using three ginseng, and a journeyman alchemist can make the strongest known healing potion using seven ginseng roots.

Mage Uses:

First Circle:	Create Food, Feeblemind, and Heal
Second Circle:	Cure and Protection
Fourth Circle:	Arch Cure, Arch Protection, and Greater Heal
Sixth Circle:	Paralyze Field
Eighth Circle:	Earthquake and Resurrection

Location:

Any shop that sells reagents is likely to have some ginseng. Additionally, it is often stocked by provisioners.

Mandrake Root

The powerful mandrake inhabits the dimmest groves of dankest swamps. Once found, great care must be taken in uprooting it in order to keep the taproot intact, for the taproot is its locus of power. The exposed root is then carefully boiled and dried. Mandrake is used in spells involving strength, power and energy.

Alchemy Uses:

Mandrake root is used to create potions that give one great strength. A serious alchemist can use two mandrake roots to create a potion of strength. An apprentice alchemist can create a greater strength potion using five mandrake roots.

Mage Uses:

Many of the known magical spells use mandrake root to power their effects.

First Circle:	Create Food
Second Circle:	Agility, Cunning, and Strength
Third Circle:	Bless, Telekinesis, and Teleport
Fourth Circle:	Arch Cure, Arch Protection, Greater Heal, Lightning, Mana Drain, and Recall
Fifth Circle:	Blade Spirits, Magic Reflection, Mind Blast, Paralyze, and Summon Creature
Sixth Circle:	Dispel, Explosion, Mark, and Mass Curse
Seventh Circle:	Chain Lightning, Energy Field, Gate Travel, Mana Vampire, Mass Dispel, Meteor Swarm, and Polymorph
Eighth Circle:	Earthquake, Energy Vortex, Summon Daemon, and all Summon Elemental spells.

Location:

Any reputable magic shop will stock mandrake root, however due its use in a great number of magic spells, one may frequently find shops sold out of mandrake root.

Nightshade

The deadly nightshade, another denizen of the swamps, was christened for its strange, waxen flowers, which only bloom at night. It should be carefully handled and prepared, for it is poisonous to the touch. For magical preparations, it is either crushed or brewed into a tea. As a reagent, nightshade focuses the powers of death, damage, poison and illusion.

Alchemy Uses:

All forms of poison use nightshade in one way or another, and poisons are the most varied potions in Britannia. A weak poison potion is easy enough for anyone to make with a single nightshade. An alchemist can produce a normal-strength poison potion with two nightshade, and a journeyman alchemist can use four nightshade to make a strong poison. Finally, a master alchemist is capable of producing the deadliest of poisons (save the touch of the poison elemental) using eight nightshade.

Mage Uses:

Nightshade is used primarily in spells that are intended to cause death.

First Circle:	Clumsy, Feeblemind, Magic Arrow, and Weaken
Second Circle:	Cunning, Harm, and Strength
Third Circle:	Poison
Fourth Circle:	Curse
Fifth Circle:	Blade Spirits, Incognito, Mind Blast, and Poison Field
Sixth Circle:	Energy Bolt, Invisibility, and Mass Curse
Eighth Circle:	Energy Vortex

Location:

You can find nightshade in any shop stocking reagents.

Spider's Silk

Spider's silk is as common as spiders are, but as fine and light as air. Because of this, at least one ounce of it is required for a simple spell. The spider's silk concentrates the power to summon, conjure and bind.

Alchemy Uses:

Anyone can make a potion of nightsight from a single ounce of spider's silk.

Mage Uses:

First Circle:	Heal, Nightsight, and Reactive Armour
Second Circle:	Harm and Magic Trap
Fourth Circle:	Fire Field, Greater Heal, and Mana Drain
Fifth Circle:	Dispel Field, Magic Reflection, Paralyze, Poison Field, and Summon Creature
Sixth Circle:	Paralyze Field
Seventh Circle:	Energy Field, Flamestrike, Mana Vampire, Meteor Swarm, and Polymorph
Eighth Circle:	Summon Daemon and all versions of Summon Elemental

Location:

Spider's silk can be found at any magic shop carrying reagents.

Sulphurous Ash

This pungent ash, created by violent volcanic disturbances, recalls the fiery and explosive energies of its origin. It is used in spells which create explosions, fire or light.

Alchemy Uses:

Sulphurous ash as a alchemical agent produces an explosive compound. A weak explosion potion requiring three sulphurous ash can be produced by just about anyone. A novice alchemist can use five sulphurous ash to produce a slightly stronger explosion. An expert alchemist can make the strongest explosion potion using ten sulphurous ash.

Mage Uses:

First Circle:	Nightsight and Reactive Armour
Second Circle:	Magic Trap and Untrap, and Protection
Third Circle:	Fireball, Magic Lock, and Magic Unlock
Fourth Circle:	Arch Protection, Curse, Fire Field, and Lightning
Fifth Circle:	Dispel Field and Mind Blast
Sixth Circle:	Dispel, Explosion, Mass Curse, and Reveal
Seventh Circle:	Chain Lightning, Energy Field, Flamestrike, Gate Travel, Mass Dispel, and Meteor Swarm
Eighth Circle:	Earthquake, Summon Daemon, and Summon Fire Elemental

Location:

Sulphurous ash is stocked by all reagent vendors in a safe form.

Alchemy - Creating potions

Alchemists in *Ultima Online: Renaissance* do not turn lead into gold, per se. Rather they create magic potions. Each of the eight common reagents is the principal ingredient in one or more potions. Each reagent lends its potions a distinctive colour. The table below lists each reagent, the distinctive colour of its potions, the names of the respective potions, and the general effect of those potions.

Reagent	Colour	Potion's Effect
Black Pearl	Red	Refresh, Total Refreshment Restores Fatigue
Blood Moss	Blue	Agility, Greater Agility, Temporarily improves Dexterity
Garlic	Orange	Lesser, (normal) and Greater Cure Counteracts poison
Ginseng	Yellow	Lesser, (normal) and Greater Heal, Heals hit points
Mandrake	White	Strength, Greater Strength, Temporarily improves Strength
Nightshade	Green	Lesser, (normal), Greater and Drains hit points. Deadly Poison
Spider Silk	Black	Nightsight, Lets you see in the dark
Sulphurous Ash	Purple	Lesser, (normal) and Greater Explodes (!), causing damage. Explosion

Potion Kegs

Potion Kegs provide a means of storing large quantities of potions in one place. To place potions in a Potion Keg, drag and drop a potion bottle on it. Each keg can store one type of potion.

To determine how many potions are in a Potion Keg, click on the keg:

0 charges:	The keg is empty.
1-4 charges:	The keg is nearly empty.
5-19 charges:	The keg is not very full.
20-29 charges:	The keg is about one quarter full.
30-39 charges:	The keg is about one third full.
40-46 charges:	The keg is almost half full.
47-53 charges:	The keg is approximately half full.
54-69 charges:	The keg is more than half full.
70-79 charges:	The keg is about three quarters full.
80-95 charges:	The keg is very full.
96-99 charges:	The liquid is almost to the top of the keg.
100 charges:	The keg is completely full.

Inscription - Making Scrolls

Inscribing

Inscribing is the skill of inscribing a spell onto a scroll.

Before you inscribe a spell you must first be able to cast the spell without the aid of a scroll. This means that you have the appropriate level of proficiency as a mage, the required mana, and the required reagents. Second, you will need a blank scroll to write on. Summon all of your inscription skill, and use it on the blank scroll. Then you will need to decide which circle you will attempt and then which particular spell. It may sound easy, but there's a bit more to it. As with the development of all skills in the game, you need to practice lower level spells before you can move onto the more difficult ones.

The most important aspect of inscription is mana. Inscribing a scroll with a magic spell drains your mana. When inscribing 3rd circle or lower spells this will not be much of a problem as your mana recharges at a slightly slower rate than you can spend it. However, when you are inscribing 6th circle spells you may see your mana drain rapidly. When this happens, pause to take a short rest before continuing.

Inscription As A Trade

The market for inscribed scrolls is better than for most trades. You can make a living selling to the merchant mages that do business in the magic shops, you can peddle your goods to the layman on the street. The mages will usually pay you a good deal less for a scroll than you can get from people on the street but you can still earn a good profit from them.

Casting Spells from a spellbook

To cast a spell from your spellbook, you must first have found the spell and transcribed it into your spellbook, and have the required reagents in your inventory. Your ability to cast a spell is based on the circle of the spell and your magery skill. . Open your spellbook and double-click on the spell you wish to cast. On targeted spells, your cursor will change into crosshairs; click on the thing or person you're casting the spell on and the spell will be cast. The reagents used in the casting will be automatically removed from your inventory. If you don't have enough reagents to cast the spell, the game will tell you. Your hands must be free of weapons or tools in order to attempt to cast. You can carry your spellbook openly in your hands, or leave it safely in your backpack.

Spell List

To learn a new spell, you must have sufficient magery skill for the circle - anyone can learn First Circle spells, while only high-ranking mages can cast Eighth Circle spells, with the other circles scaled in proportion. If you meet this requirement, you then must have a scroll inscribed with the spell you wish to learn. Click on the scroll and drag it directly onto your spellbook window (or onto your spellbook in your backpack). It will inscribe itself into your spellbook, and you should be able to cast it thereafter. You can simplify and speed up combat spell casting by using macros to associate casting a spell with your chosen hot key. Also, each spell in your spellbook has an icon on its page in the book. You can drag this icon off the page and onto your screen. Double-clicking on the icon will cast that spell. (Of course, this all assumes you have the correct reagents).

First Circle

Des Mani (Weaken)

Des Mani temporarily reduces the strength of the target creature. If this creature possesses great skill or stamina, it may be able to resist the spell.

Spell Reagents: *Garlic, Nightshade*



Uus Jux (Clumsy)

This spell must be focused on a single creature, for it temporarily reduces a creature's dexterity. This spell becomes more powerful (and its victims become clumsier) as the caster's skills improve.

Spell Reagents: *Blood Moss, Nightshade*



In Mani Ylem (Create Food)

Each casting creates a single item of food, which appears at the location the mage designates.

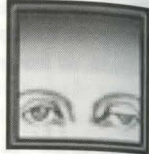
Spell Reagents: *Garlic, Ginseng, Mandrake Root*



Rel Wis (Feeblemind)

This spell temporarily reduces a being's intelligence, and must be focused on a single target. The more skillful the mage, the greater the reduction of intelligence.

Spell Reagents: *Nightshade, Ginseng*



In Mani (Heal)

In Mani concentrates powers of healing around the creature on which you are focusing. The level of healing is partially dependent on the caster's skill.

Spell Reagents: *Garlic, Ginseng, Spider's Silk*



In Por Ylem (Magic Arrow)

Not for those sworn to protect life, this spell casts a ball of fire at a single target, damaging what it hits. This damage is not great compared to that available to a master of the higher circles, but the spell does become stronger as the mage's skill improves.

Spell Reagents: *Black Pearl, Nightshade*



In Lor (Night Vision)

In Lor sharpens the mage's night vision, improving sight in areas of darkness or dim light. When cast, everything will appear brighter to the caster, but the vision of others will remain unchanged. More experienced mages can maintain the aura longer.

Spell Reagents: *Spider's Silk, Sulphurous Ash*



Flam Sanct (Reactive Armour)

Flam Sanct protects the caster from harm by reflecting a small amount of the injury caused by bladed or blunt weapons back onto the wielder of these weapons. Remember though, this is only a spell of the First Circle, and its protective power is accordingly very slight as it offers no protection from magical attacks or ranged weapons such as arrows.

Spell Reagents: *Garlic, Spiders' Silk, Sulphurous Ash*



Second Circle

Ex Uus (Agility)

Ex Uus temporarily increases the skill of the targeted creature. The amount of increase depends on the caster's skill.

Spell Reagents: *Blood Moss, Mandrake Root*



Uus Wis (Cunning)

Uus Wis temporarily increases a being's intelligence. This spell's strength depends on the skill of the mage casting it.

Spell Reagents: *Nightshade, Mandrake Root*



An Nox (Cure)

This spell neutralizes a "nox," or poison.

Spell Reagents: *Garlic, Ginseng*



An Mani (Harm)

In direct opposition to the healing power of In Mani (First Circle), this spell concentrates powers of harm around a single creature. The strength of the spell depends on the caster's skill.

Spell Reagents: *Nightshade, Spider's Silk*



In Jux (Magic Trap)

In Jux creates an explosive trap on any usable object. The next time this object is used, the trap will go off. Each trap explodes only once.

Spell Reagents: *Garlic, Spider's Silk, Sulphurous Ash*



An Jux (Magic Untrap)

An Jux removes any magical trap that may have been cast on an object. Each casting removes traps from a single object.

Spell Reagents: *Blood Moss, Sulphurous Ash*



Uus Sanct (Protection)

Uus Sanct temporarily increases a creature's ability to withstand the blows of its foes (whether physical or magical). The more experienced the caster is, the greater the protection he or she can offer others.

Spell Reagents: *Garlic, Ginseng, Sulphurous Ash*



Uus Mani (Strength)

Uus Mani temporarily increases a creature's strength to the extent that the caster's skill allows.

Spell Reagents: *Mandrake Root, Nightshade*



Third Circle

Rel Sanct (Bless)

Rel Sanct temporarily increases the health, agility, strength and intelligence of the creature on which the spell is focused.

Spell Reagents: *Mandrake Root, Garlic*



Vas Flam (Fireball)

Vas Flam casts a fireball at your target, more powerful than that conjured by In Por Ylem (First Circle).

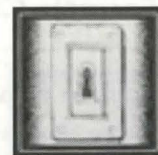
Spell Reagents: *Black Pearl, Sulphurous Ash*



An Por (Magic Lock)

An Por places a magical lock on a chest.

Spell Reagents: *Blood Moss, Garlic, Sulphurous Ash*



In Nox (Poison)

This spell poisons the caster's chosen victim. It can be countered if An Nox (Second Circle) is cast on the victim.

Spell Reagent: *Nightshade*



Ort Por Ylem (Telekinesis)

This spell allows the mage to use and manipulate objects without physically touching them.

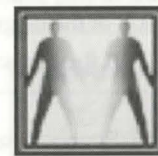
Spell Reagents: *Blood Moss, Mandrake Root*



Rel Por (Teleport)

Rel Por teleports the caster to a location on which the caster is focusing. In this circle of magic, the mage's power of teleportation is limited to places within sight at the time of casting.

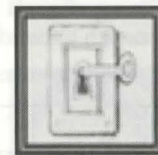
Spell Reagents: *Blood Moss, Mandrake Root*



Ex Por (Unlock)

This spell unlocks magical locks, such as those created with An Por (Third Circle).

Spell Reagents: *Blood Moss, Sulphurous Ash*



In Sanct Ylem (Wall of Stone)

This spell creates a temporary stone wall. It must be cast on an open patch of ground, for the mage's power is not strong enough to build on top of objects or creatures.

Spell Reagents: *Blood Moss, Garlic*



Fourth Circle

Vas An Nox (Archcure)

Vas An Nox neutralizes a poison, just as An Nox (Second Circle), but amplifies the cure so that several creatures can be cured at once. Each casting cures all creatures within the area on which the spell is focused.

Spell Reagents: *Garlic, Ginseng, Mandrake Root*



Vas Uus Sanct (Archprotection)

Vas Uus Sanct creates the same type of protective force as Uus Sanct (Second Circle), but extends it to all creatures near the focus of the spell.

Spell Reagents: *Garlic, Ginseng, Mandrake Root, Sulphurous Ash*



Des Sanct (Curse)

In direct opposition to Rel Sanct (Third Circle), this spell temporarily reduces the health, skill, agility and intelligence of a single creature. The greater the skill of the mage, the greater the reduction in all respects.

Spell Reagents: *Garlic, Nightshade, Sulphurous Ash*



In Flam Grav (Fire Field)

In Flam Grav creates a temporary, flaming wall which burns all who touch it. This spell must be cast on open ground, for the mage's power is not strong enough to build walls over objects or people.

Spell Reagents: *Black Pearl, Spider's Silk, Sulphurous Ash*



In Vas Mani (Greater Heal)

This spell heals a single creature, similarly to In Mani (First Circle), but to a much greater degree.

Spell Reagents: *Garlic, Ginseng, Mandrake Root, Spider's Silk*



Por Ort Grav (Lightning)

Por Ort Grav directs a bolt of lightning from the heavens to the caster's target. The electrical charge is powerful, and becomes more so as the mage's skill increases.

Spell Reagents: *Black Pearl, Mandrake Root, Sulphurous Ash*



Ort Rel (Mana Drain)

This spell drains all mana from the creature on which it is cast. (The creature's mana will regenerate normally, however.) It is a very difficult spell to achieve, because most creatures have a strong resistance to it. The best defense against this spell is the Fifth Circle spell In Jux Sanct, or Magic Reflection.

Spell Reagents: *Black Pearl, Mandrake Root, Spider's Silk*



Kal Ort Por (Recall)

A mage casts this spell on a marked object to teleport back to the location at which the object was marked. Objects are marked with Kal Por Ylem (Sixth Circle).

Spell Reagents: *Black Pearl, Blood Moss, Mandrake Root*



Fifth Circle

In Jux Hur Ylem (Blade Spirits)

In Jux Hur Ylem creates a deadly, spinning column of sharp blades. Blade spirits move quickly, tracking the closest moving creature within their sensory field. All that they touch are grievously wounded.

Spell Reagents: *Black Pearl, Mandrake Root, Nightshade*



An Grav (Dispel Field)

This spell creates a void at the place on which the mage focuses.

Spell Reagents: *Black Pearl, Garlic, Spider's Silk, Sulphurous Ash*



Kal In Ex (Incognito)

This spell must be directed at a single creature. The name and appearance of the affected creature are randomly changed for the duration of the spell.

Spell Reagents: *Blood Moss, Garlic, Nightshade*



In Jux Sanct (Magic Reflection)

In Jux Sanct creates an invisible shield of etheric energy around a creature. It reflects the next spell cast on the protected creature back to the mage who cast it. Each In Jux Sanct spell reflects just one spell. It should be used with caution, for not even the mage who casts this spell is immune to its effects.

Spell Reagents: *Garlic, Mandrake Root, Spider's Silk*



Por Corp Wis (Mind Blast)

Mages attempting to cast this spell should take care to avoid the deception of pride, for Por Corp Wis pits the mind of the mage against the mind of the intended victim, and the less intelligent of the two is harmed.

Spell Reagents: *Black Pearl, Mandrake Root, Nightshade, Sulphurous Ash*



An Ex Por (Paralyze)

This paralyzes a creature as long as the caster's skill can maintain the spell. Some creatures are able to resist the paralyzing effects.

Spell Reagents: *Garlic, Mandrake Root, Spider's Silk*



In Nox Grav (Poison Field)

This creates a temporary wall that poisons all who touch it. This spell must be cast on open ground.

Spell Reagents: *Black Pearl, Nightshade, Spider's Silk*



Kal Xen (Summon Creature)

Kal Xen summons a random creature to fight for the caster. The more skillful the mage, the longer the summoning can be maintained.

Spell Reagents: *Blood Moss, Mandrake Root, Spider's Silk*

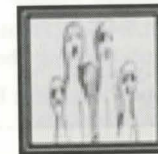


Sixth Circle

An Ort (Dispel)

An Ort destroys a single summoned creature.

Spell Reagents: *Garlic, Mandrake Root, Sulphurous Ash*



Corp Por (Energy Bolt)

This spell allows the mage to direct bolts of pure energy against a target. The strength of the bolt depends on the mage's skill.

Spell Reagents: *Black Pearl, Nightshade*



Vas Ort Flam (Explosion)

This spell sets off an explosion in the location designated by the mage.

Spell Reagents: *Black Pearl, Mandrake Root, Sulphurous Ash*



An Lor Xen (Invisibility)

This spell causes whatever it targets to disappear from sight.

Spell Reagents: *Blood Moss, Nightshade*



Kal Por Ylem (Mark)

Marking an object at a specific location allows the mage to later cast Kal Ort Por (Fourth Circle) on the object and immediately return to the specified location.

Spell Reagents: *Black Pearl, Blood Moss, Mandrake Root*



Vas Des Sanct (Mass Curse)

Vas Des Sanct magnifies Des Sanct (Fourth Circle) to curse all creatures in the area in which the spell is cast. Some creatures may resist more than others.

Spell Reagents: *Garlic, Mandrake Root, Nightshade, Sulphurous Ash*



In Ex Grav (Paralyze Field)

In Ex Grav creates a temporary "wall" that paralyzes all who touch it. Some creatures may be able to resist this paralysis.

Spell Reagents: Black Pearl, Ginseng, Spider's Silk



Wis Quas (Reveal)

Wis Quas reveals any invisible objects or creatures lurking nearby.

Spell Reagents: Blood Moss, Sulphurous Ash



Seventh Circle

Vas Ort Grav (Chain Lightning)

This casts down lightning on everything within the targeted area.

Spell Reagents: Black Pearl, Blood Moss, Mandrake Root, Sulphurous Ash



In Sanct Grav (Energy Field)

In Sanct Grav creates a temporary wall of electrical energy that harms all who attempt to pass through it.

Spell Reagents: Black Pearl, Mandrake Root, Spider's Silk, Sulphurous Ash



Kal Vas Flam (Flamestrike)

This spell casts a pillar of fire down on the chosen target.

Spell Reagents: Spider's Silk, Sulphurous Ash



Vas Rel Por (Gate Travel)

Casting this spell on an object that has been marked with the Kal Por Ylem spell (Sixth Circle) calls up a red, pulsing gate. Anyone who enters this gate will teleport back to the location marked on the object.

Spell Reagents: Black Pearl, Mandrake Root, Sulphurous Ash



Ort Sanct (Mana Vampire)

This spell allows the mage to absorb all of one victim's mana. The mage's mana is replenished, and the victim is left with none. (The victim's mana is then restored normally, however.) This spell is incredibly difficult to achieve, as the level of resistance to it is high. The best defense against it is the Fifth Circle spell In Jux Sanct (Magic Reflection).

Spell Reagents: Black Pearl, Blood Moss, Mandrake Root, Spider's Silk



Vas An Ort (Mass Dispel)

Vas An Ort destroys all summoned creatures in the area on which the mage is focusing.

Spell Reagents: Black Pearl, Garlic, Mandrake Root, Sulphurous Ash



Flam Kal Des Ylem (Meteor Swarm)

Kal Des Flam Ylem casts a storm of flaming meteors upon the area on which the mage focuses.

Spell Reagents: Blood Moss, Spider's Silk, Mandrake Root, Sulphurous Ash



Vas Ylem Rel (Polymorph)

By casting this spell, a mage can transform into whatever creature he or she desires.

Spell Reagents: Blood Moss, Mandrake Root, Spider's Silk

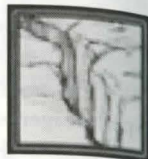


Eighth Circle

In Vas Por (Earthquake)

In Vas Por creates a tremor in the earth that causes all mobile creatures in a large area around the caster to stumble and fall. The caster, however, will remain serenely upright.

Spell Reagents: *Blood Moss, Ginseng, Mandrake Root, Sulphurous Ash*



Vas Corp Por (Energy Vortex)

Vas Corp Por creates a quick-moving vortex of energy that will attack any creature coming near it. The vortex harms (An Mani; Second Circle), poisons (In Nox; Third Circle) and curses (Des Sanct; Fourth Circle) any creature that touches it.

Spell Reagents: *Black Pearl, Blood Moss, Mandrake Root, Nightshade*



An Corp (Resurrection)

An Corp resurrects a human ghost.

Spell Reagents: *Blood Moss, Garlic, Ginseng*



Kal Vas Xen Hur (Summon Air Elemental)

Kal Vas Xen Hur summons an air elemental to fight for the caster. The more skillful the mage, the longer this spell can be maintained.

Spell Reagents: *Blood Moss, Mandrake Root, Spider's Silk*



Kal Vas Xen Corp (Summon Daemon)

Kal Vas Xen Corp summons a daemon to fight for the caster. The more skillful the mage, the longer this spell can be maintained.

Spell Reagents: *Blood Moss, Mandrake Root, Spider's Silk, Sulphurous Ash*



Kal Vas Xen Ylem (Summon Earth Elemental)

Kal Vas Xen Ylem summons an earth elemental to fight for the caster. The more skillful the mage, the longer this spell can be maintained.

Spell Reagents: *Blood Moss, Mandrake Root, Spider's Silk*



Kal Vas Xen Flam (Summon Fire Elemental)

Kal Vas Xen Flam summons a fire elemental to fight for the caster. The more skillful the mage, the longer this spell can be maintained.

Spell Reagents: *Blood Moss, Mandrake Root, Spider's Silk, Sulphurous Ash*



Kal Vas Xen An Flam (Summon Water Elemental)

Kal Vas Xen An Flam summons a water elemental to fight for the caster. The more skillful the mage, the longer this spell can be maintained.

Spell Reagents: *Blood Moss, Mandrake Root, Spider's Silk*



Runes

Runes is the abbreviated name for recall runes. Runes are sold by mage vendors in magic shops. They are little wooden tokens when you buy them.

A recall rune has two states: blank and marked.

When you find an interesting location in the game, say the dungeon Covetous, you may wish to have a way to travel there quickly. Pull out your recall rune and cast the spell MARK. This will bring up a targeting cursor and for you to select the rune. If successful, the rune will now hold that location. It is marked.

Later on in the game, you have probably adventured to Skara Brae or somewhere, but you would like to return to the interesting spot in the dungeon Covetous. Simply cast recall. This again will bring up a targeting cursor and you should select the rune you have marked previously. You will be instantaneously teleported to that location.

Rune books

General Features

A rune book can hold a total of 16 locations.

One of these locations can be set as the "default" location.

If the rune book has a default location specified, casting the recall or gate spell on the rune book treats the book like a rune.

Books have charges that will allow you to recall to locations in the book without casting recall. Using a charge requires you to have the necessary magery skill and mana to cast the spell just like casting from a recall scroll.

Rune books are rechargeable with recall scrolls. Dragging a recall scroll onto the book will add one charge (up to its maximum).

Dragging a rune onto a book adds that location to the book.

You can name the rune book by opening the book and clicking the red gem on upper right. After clicking the gem, simply type in the name of the book and hit enter.

Rune books have no weight. A direct result of that is that a thief cannot steal a rune book by directly targeting it. A rune book *can* be stolen however if a thief does a random steal from your backpack.

Creation

Rune Books are crafted using the inscription skill.

Inscribers need 8 blank scrolls, 1 recall scroll, 1 gate travel scroll and a rune.

To make a rune book, use the inscription skill and then target a blank rune. The system will then check to make sure you have the necessary components.

If the creation of the book fails you may lose the recall scroll, the gate scroll, the rune and some blank scrolls.

You cannot have your spell book equipped at the time you attempt to make a rune book.

The number of charges a book can hold will range from 5 to 10, depending on the skill of the Inscriber.

Depending on the inscription skill of the inscriber, a rune book can be of exceptional quality.

Regular rune books generally hold 5 to 8 charges, exceptional quality rune books generally hold 7 to 10 charges.

Using the Rune Book

Rune books can be equipped like spell books.

On the top left of the first index page is a large Red Gem button. Press this to rename the book.

Casting recall directly on the rune book will transport you to the location set as the "default".

Casting gate directly on the rune book will open a gate with the destination to the "default" location of the book.

To access the non-default locations, you will be able to open the book by double clicking on it.

When open, the book displays two index pages with 8 locations on each page.

Each index page has the current number of charges listed on the top left side and the maximum number of charges the book can hold on the right side.

Each location entry has a small blue "recall" button (similar looking to the buttons used in the skill list). Clicking this button uses a charge and transports you to that location. If the book has no charges left, you will not be able to do this.

The index pages display the first 18 characters from the marked rune's name.

At the bottom of the index pages, there are the numbers "1" - "8" (just like spell books). Clicking these numbers brings you to a "rune page".

After each use (success or failure) the rune book needs a few seconds to "recharge".

If you use a scroll to cast the recall spell you can only target the book itself and therefore only travel to the default location set on the rune book.

Rune Pages

Each rune page contains:

- A button to use a charge and recall to that location.
- A button (a small down arrow) to drop the rune from the book. This returns a rune with that location marked.
- The sextant coordinates for the rune's marked location.
- A button to make the rune location the default location. This button appears green unless the location is the default location, in which case it will be red.
- An icon to cast recall. You will need to have the required mana, skill level and the reagents. This will not use a charge.
- An icon to cast gate. You will need to have the required mana, skill level and the reagents. This will not use a charge.

CHAPTER 22:

WEAPONS AND ARMOUR

Finding & Purchasing

Most cities and towns in Britannia have Armourers and Blacksmith shops. Major cities, such as Britain, have shops specializing in heavy armor. If you're far from a town and you need to buy some armor, or have it repaired, you can often find skilled blacksmiths among the miners in mountain areas. Most of these mining areas have outdoor metal smelters and anvils. Hang around one, and you'll likely meet some skilled 'smiths who can create armour for you.

Repairing

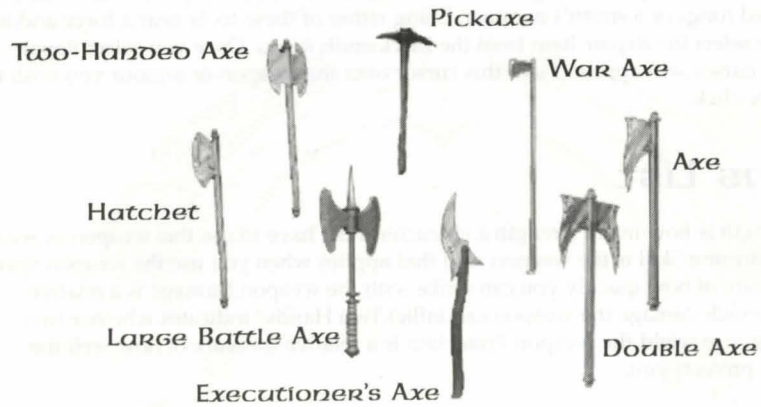
Skilled blacksmiths can repair damaged armour. In order to repair weapons or armour, a smith will need tongs or a smith's hammer. Using either of these tools near a forge and anvil will allow you to select the Repair Item from the Blacksmith menu. Once you select Repair Item, a targeting cursor will appear. Place this cursor over the weapon or armour you wish to repair and double-click.

Weapons List

Required Strength is how much strength a character must have to use this weapon or wear this piece of armour. Skill is the weapon skill that applies when you use the weapon. Speed is a relative measure of how quickly you can strike with the weapon. Damage is a relative measure of how much damage the weapon can inflict. Two Hands? indicates whether two hands are necessary to wield the weapon. Protection is a relative measure of how well the armour or shield protects you.

Axes

Weapon	Req. Str.	Skill	Speed	Damage	Two Hands?
Axe	35	Swordsm.	Average	Average	Yes
Double Axe	45	Swordsm.	Average	Average	Yes
Executioner's Axe	35	Swordsm.	Slow	Average	Yes
Large Battle Axe	40	Swordsm.	Slow	High	Yes
Hatchet	15	Swordsm.	Average	Low	Yes
Pickaxe	25	Swordsm.	Slow	Low	
Two-Handed Axe	35	Swordsm.	Slow	High	Yes
War Axe	35	Mace Ftg.	Average	Average	



Knives and Daggers

Weapon	Req. Str.	Skill	Speed	Damage	Two Hands?
Butcher Knife	5	Swordsm.	Average	Low	
Cleaver	10	Swordsm.	Average	Low	
Dagger	1	Fencing	Very Fast	Low	
Kryss	10	Fencing	Very Fast	Average	
Skinning Knife	5	Swordsm.	Average	Very Low	



Maces and Hammers

Weapon	Req. Str.	Skill	Speed	Damage	Two Hands?
Club	10	Mace Ftg.	Average	Average	
Hammer Pick	35	Mace Ftg.	Slow	Average	Yes
Mace	20	Mace Ftg.	Slow	Average	
Maul	20	Mace Ftg.	Slow	Average	
Smithy Hammer	30	Mace Ftg.	Slow	Low	
War Hammer	40	Mace Ftg.	Slow	High	Yes
War Mace	30	Mace Ftg.	Slow	Average	
Practice Mace	10	Mace Ftg.	Fast	Very Low	



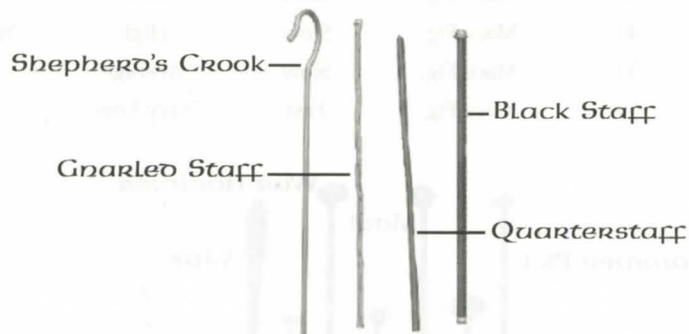
Pole Arms

Weapon	Req. Str.	Skill	Speed	Damage	Two Hands?
Bardiche	40	Swordsm.	Very Slow	High	Yes
Halberd	45	Swordsm.	Very Slow	Very High	Yes



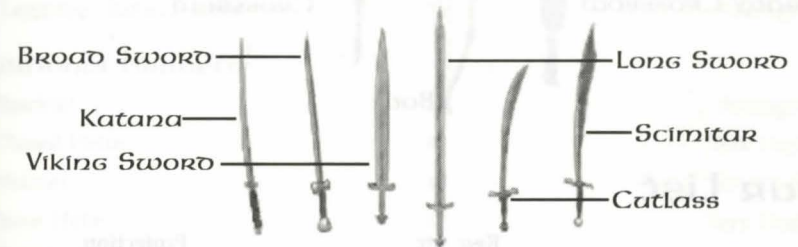
Staves

Weapon	Req. Str.	Skill	Speed	Damage	Two Hands?
Black Staff	35	Mace Ftg.	Slow	Average	Yes
Gnarled Staff	20	Mace Ftg.	Slow	Average	Yes
Quarterstaff	30	Mace Ftg.	Fast	Average	Yes
Shepherd's Crook	10	Mace Ftg.	Slow	Low	Yes



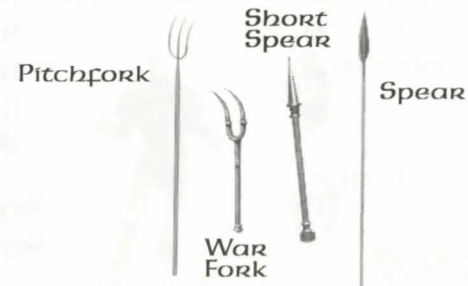
SWORDS

Weapon	Req. Str.	Skill	Speed	Damage	Two Hands?
Broad Sword	25	Swordsm.	Fast	Average	
Cutlass	10	Swordsm.	Average	Average	
Katana	10	Swordsm.	Very Fast	Average	
Long Sword	25	Swordsm.	Slow	Average	
Scimitar	10	Swordsm.	Fast	Average	
Viking Sword	40	Swordsm.	Slow	Average	
Practice Sword	10	Swordsm.	Fast	Very Low	



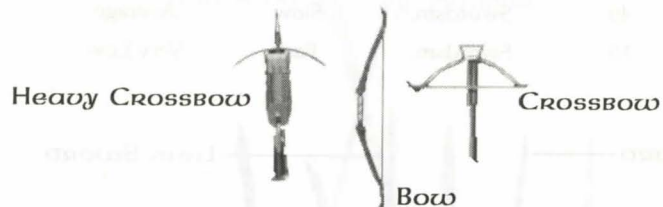
Spears and Forks

Weapon	Req. Str.	Skill	Speed	Damage	Two Hands?
Pitchfork	15	Fencing	Fast	Low	Yes
Short Spear	15	Fencing	Fast	Average	
Spear	30	Fencing	Fast	Average	Yes
War Fork	35	Fencing	Fast	Average	



Bows and Crossbows

Weapon	Req. Str.	Skill	Speed	Damage	Two Hands?
Bow	20	Archery	Very Slow	High	Yes
Crossbow	30	Archery	Very Slow	High	Yes
Heavy Crossbow	40	Archery	Very Slow	Very High	Yes
Practice Bow	10	Archery	Very Slow	Low	Yes



Armour List

Armour	Req. Str.	Protection
Bone (each piece)	40	Very High
Chain mail (each piece)	20	High
Leather		
Tunic, Cap, Female	15	Low
all other pieces	10	Low
Plate		
Female	20	Average
Gauntlets, Gorget	30	High
Arm Plates, Helm	40	High
Breast Plate, Leg Plates	60	High
Ring mail (each piece)	20	High
Shields		
Buckler	15	Very Low
Chaos Shield	0	Very High

Heater Shield	30	High
Metal Shield	15	Low
Kite Shield	20	Average
Order Shield	0	Very High
Round Bronze Shield	20	Low
Kite Shield	30	Low
Wooden Shield	5	Low

Studded Leather

Gloves, Gorget, Sleeves, Bustier	25	Average
Leggings, Tunic, Female	35	Average

Additional Helmets

Bascinet	10	Average
Closed Helm	40	Very High
Helmet	40	Very High
Nose Helm	40	Very High
Orc Helm	0	High
All Clothing	0	Very Low



Bone



Chainmail



Leather



Plate



Ringmail



Studded Leather



Bascinet



Helmet



Closed Helm



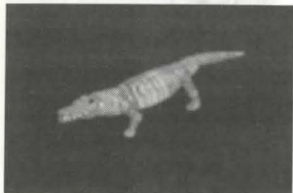
Nose Helm



ORC Helm

CHAPTER 23: ANIMALS

Alligator



Habitat: Swamp
 Seeks Out: Rotting logs
 Diet: Carnivorous
 Size: Medium

Bird



Habitat: Forest, Tropical
 Seeks Out: Other birds
 Diet: Herbivorous
 Size: Small

Bear (Black/Brown)



Habitat: Forest
 Seeks Out: Honey
 Diet: Omnivorous
 Size: Medium

Bear (Grizzly)



Habitat: Forest
 Seeks Out: Honey
 Diet: Omnivorous
 Size: Large

Bear (Polar)



Habitat: Arctic
 Seeks Out: Caves
 Diet: Omnivorous
 Size: Large



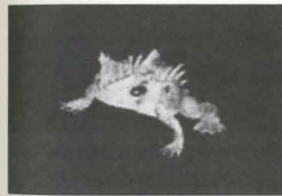
Bull



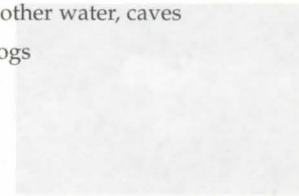
Habitat: Farms
 Seeks Out: Cows
 Diet: Herbivorous
 Size: Large



Bull Frog



Habitat: Swamps and other water, caves
 Seeks Out: Other Bull Frogs
 Diet: Carnivorous
 Size: Small



Cat



Habitat: Towns and farms
 Seeks Out: Humans
 Diet: Carnivorous
 Size: Small



Chicken



Habitat: Farms
 Seeks Out: Humans
 Diet: Herbivorous
 Size: Small



Cougar



Habitat: Mountains, forests
 Seeks Out: Shady places, other cougars
 Diet: Carnivorous
 Size: Medium

Cow



Habitat: Farms (plains)
 Seeks Out: Other cows
 Diet: Herbivorous
 Size: Large

Deer/Doe (Hart)



Habitat: Forest
 Seeks Out: Other harts
 Diet: Herbivorous
 Size: Large

Dog



Habitat: Towns and farms
 Seeks Out: Humans
 Diet: Carnivorous
 Size: Small

Dolphin



Habitat: Ocean
 Seeks Out: Ships and other dolphins
 Diet: Omnivorous
 Size: Large

Eagle



Habitat: Mountains
 Seeks Out: High places
 Diet: Carnivorous
 Size: Medium

Goat (Domestic/Mountain)



Habitat: Farms (Domestic Goat) or:
 Mountains (Mountain Goat)
 Seeks Out: Garbage
 Diet: Herbivorous
 Size: Small

Gorilla



Habitat: Jungle
 Seeks Out: Other gorillas
 Diet: Omnivorous
 Size: Large

Horse



Habitat: Farms and towns
 Seeks Out: Other horses
 Diet: Herbivorous
 Size: Large

Llama



Habitat: Mountains
 Seeks Out: Crops
 Diet: Herbivorous
 Size: Large

Ostard (Desert)



Habitat: Desert
 Seeks Out: Other Ostards
 Diet: Herbivorous
 Size: Large



Ostard (Forest)



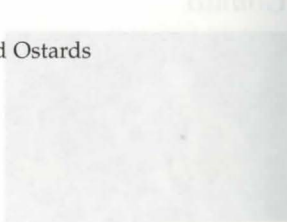
Habitat: Forest
 Seeks Out: Other Ostards
 Diet: Herbivorous
 Size: Large



Ostard (Frenzied)



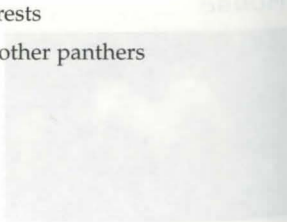
Habitat: Forest
 Seeks Out: Other Frenzied Ostards
 Diet: Carnivorous
 Size: Large



Panther



Habitat: Mountains, forests
 Seeks Out: Shady places, other panthers
 Diet: Carnivorous
 Size: Medium



Pig (Boar)



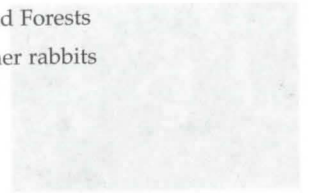
Habitat: Farms
 Seeks Out: Other pigs
 Diet: Omnivorous
 Size: Medium to Large



Rabbit



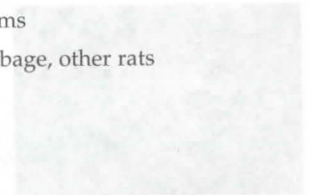
Habitat: Grasslands and Forests
 Seeks Out: Crops and other rabbits
 Diet: Herbivorous
 Size: Small



Rat



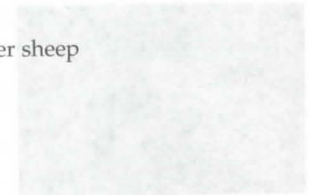
Habitat: Cities and farms
 Seeks Out: Darkness, garbage, other rats
 Diet: Omnivorous
 Size: Small



Sheep



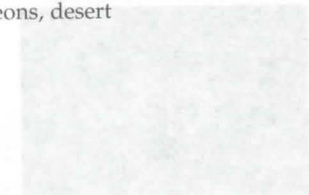
Habitat: Farms
 Seeks Out: Humans, other sheep
 Diet: Herbivorous
 Size: Medium



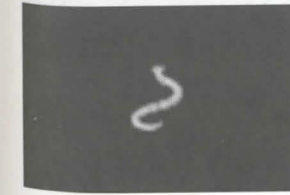
Snake (Small)



Habitat: Caves, dungeons, desert
 Seeks Out: Shadows
 Diet: Carnivorous
 Size: Small



Snake (Ice)



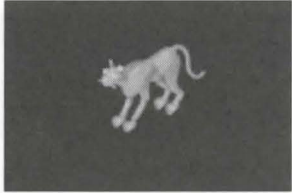
Habitat: Caves, dungeons
 Seeks Out: Gold
 Diet: Carnivorous
 Size: Small

Snake (Lava)



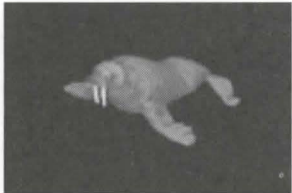
Habitat: Volcanic areas
 Seeks Out: Lava
 Diet: Carnivorous
 Size: Small

Snow Leopard



Habitat: Arctic
 Seeks Out: Shady, cold places, other snow leopards
 Diet: Carnivorous
 Size: Medium

Walrus



Habitat: Coastal waters
 Seeks Out: Other walruses
 Diet: Carnivorous
 Size: Medium

Wolf



Habitat: Forest, Arctic, Cave
 Seeks Out: Other wolves
 Diet: Carnivorous
 Size: Medium

CHAPTER 24:
 MONSTERS

Air Elemental



Habitat: Mountains
 Seeks Out: High places
 Diet: Nothing physical
 Size: Large, Magical

Balron (Elder Daemon)



Habitat: Jungle, swamp, forest
 Seeks Out: Wooded areas
 Diet: Carnivorous
 Size: Large

Blood Elemental



Habitat: Deep underground
 Seeks Out: Blood
 Diet: Blood
 Size: Large, Magical, Intelligent

Corpser



Habitat: Jungle, swamp, forest
 Seeks Out: Wooded areas
 Diet: Carnivorous
 Size: Large

Cyclops



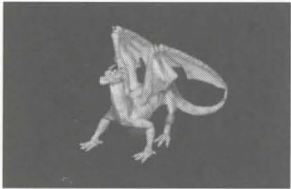
Habitat: Forest, mountains
 Seeks Out: Other Cyclopes, Gold
 Diet: Carnivorous
 Size: Large, Intelligent

Daemon



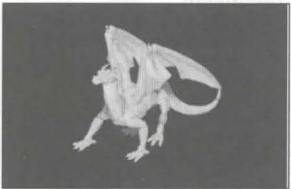
Habitat: Dungeons and caves
 Seeks Out: Gold, other Daemons
 Diet: Carnivorous
 Size: Large, Magical, Intelligent

Dragon



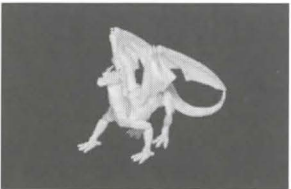
Habitat: Caves, dungeons
 Seeks Out: Gold
 Diet: Carnivorous
 Size: Large, Magical, Intelligent

Dragon (Elder WyrM)



Habitat: Caves, dungeons
 Seeks Out: Gold
 Diet: Carnivorous
 Size: Large, Magical, Intelligent

Dragon (Ice)



Habitat: Caves, dungeons
 Seeks Out: Gold
 Diet: Carnivorous
 Size: Large, Magical, Intelligent

Earth Elemental



Habitat: Mountains, caves
 Seeks Out: Caves
 Diet: Nothing physical
 Size: Large, Magical

Epreet



Habitat: Deserts
 Seeks Out: Adventurers
 Diet: Nothing physical
 Size: Large, Magical, Intelligent

Ettin



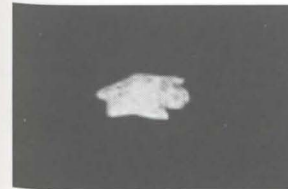
Habitat: Forest, mountains
 Seeks Out: Gold, other eating
 Diet: Carnivorous
 Size: Large, Intelligent

Fire Elemental



Habitat: Volcanoes
 Seeks Out: Lava
 Diet: Nothing physical
 Size: Large, Magical

Frost Ooze



Habitat: Ice caves
 Seeks Out: Other Frost Oozes
 Diet: Omnivorous
 Size: Small

Gargoyle



Habitat: Underground
 Seeks Out: Gold, other gargoyles
 Diet: Carnivorous
 Size: Medium, Intelligent

Gargoyle (Stone)



Habitat: Desert mountains
 Seeks Out: Other Stone Gargoyles, Gold
 Diet: Carnivorous
 Size: Medium

Gazer



Habitat: Dungeons
 Seeks Out: Gold, other gazers
 Diet: Nothing physical
 Size: Medium, Magical

Elder Gazer



Habitat: Dungeons
 Seeks Out: Gold, other Gazers
 Diet: Nothing physical
 Size: Medium, Magical

Ghoul (Ice)



Habitat: Dungeons
 Seeks Out: Gold, humans
 Diet: Nothing physical
 Size: Medium, Magical

Harpy



Habitat: Forest, mountains
 Seeks Out: Gold, other harpies
 Diet: Carnivorous
 Size: Medium

Harpy (Stone)



Habitat: Deserts, mountains
 Seeks Out: Other Stone Harpies, Gold
 Diet: Carnivorous
 Size: Medium

Headless



Habitat: Mountains, dungeons
 Seeks Out: Gold, other headless
 Diet: Carnivorous
 Size: Medium

Hell Hound



Habitat: Caves
 Seeks Out: Other Hell Hounds
 Diet: Carnivorous
 Size: Medium

Hellcat



Habitat: Caves, volcanic areas
 Seeks Out: Other Hellcats
 Diet: Carnivorous
 Size: Small

Hellcat (Predator)



Habitat: Caves
 Seeks Out: Other Hellcats
 Diet: Carnivorous
 Size: Medium



Ice Elemental



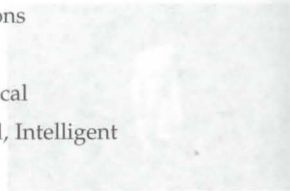
Habitat: Caves, mountains
 Seeks Out: Cold places
 Diet: Nothing physical
 Size: Large, Intelligent



Ice Fiend



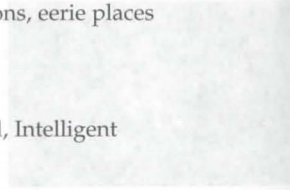
Habitat: Caves, dungeons
 Seeks Out: Gold
 Diet: Nothing physical
 Size: Large, Magical, Intelligent



Imp



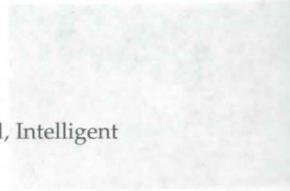
Habitat: Caves, dungeons, eerie places
 Seeks Out: Other Imps
 Diet: Omnivorous
 Size: Small, Magical, Intelligent



Kraken



Habitat: Seas
 Seeks Out: Ships
 Diet: Carnivorous
 Size: Large, Magical, Intelligent



Lava Lizard



Habitat: Volcanic areas
 Seeks Out: Lava
 Diet: Carnivorous
 Size: Medium



Lich



Habitat: Dungeons, caves
 Seeks Out: Gold
 Diet: Nothing physical
 Size: Medium, Intelligent, Magical



Lich Lord



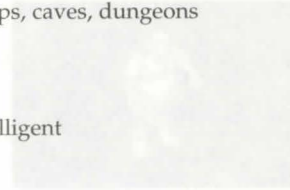
Habitat: Dungeons, caves
 Seeks Out: Gold
 Diet: Nothing physical
 Size: Medium, Magical, Intelligent



Lizard Man



Habitat: Desert, swamps, caves, dungeons
 Seeks Out: Gold
 Diet: Carnivorous
 Size: Medium, Intelligent



Mong Bat



Habitat: Caves, dungeons
 Seeks Out: Gold
 Diet: Omnivorous
 Size: Small, Intelligent



Mummy



Habitat: Deserts, eerie places
 Seeks Out: Gold
 Diet: Nothing physical
 Size: Medium, Intelligent

Nightmare



Habitat: Dungeons, volcanic regions
 Seeks Out: Gold
 Diet: Carnivorous
 Size: Large, Magical, Intelligent

Ogre



Habitat: Forest, mountains
 Seeks Out: Gold, other Ogres
 Diet: Carnivorous
 Size: Large, Intelligent

Ogre Lord



Habitat: Forests, mountains
 Seeks Out: Gold, other Ogres
 Diet: Carnivorous
 Size: Large, Intelligent

Ophidian Archmage



Habitat: Deserts
 Seeks Out: Other Ophidians
 Diet: Carnivorous
 Size: Medium, Magical, Intelligent

Ophidian Knight



Habitat: Deserts
 Seeks Out: Other Ophidians
 Diet: Carnivorous
 Size: Medium, Intelligent

Ophidian Mage



Habitat: Deserts
 Seeks Out: Other Ophidians
 Diet: Carnivorous
 Size: Medium, Magical, Intelligent

Ophidian Queen



Habitat: Deserts
 Seeks Out: Other Ophidians
 Diet: Carnivorous
 Size: Medium, Magical, Intelligent

Ophidian Warrior



Habitat: Deserts
 Seeks Out: Other Ophidians
 Diet: Carnivorous
 Size: Medium, Intelligent

ORC



Habitat: Caves, dungeons
 Seeks Out: Gold, other orcs
 Diet: Carnivorous
 Size: Medium, Intelligent

ORC LORD



Habitat: Caves, dungeons
 Seeks Out: Gold, other Orcs
 Diet: Carnivorous
 Size: Medium, Intelligent

ORC Mage



Habitat: Caves, dungeons
 Seeks Out: Gold, other Orcs, Magic
 Diet: Carnivorous
 Size: Medium, Magical, Intelligent

Phoenix



Habitat: Volcanic mountains
 Seeks Out: Hot places
 Diet: Carnivorous
 Size: Medium, Magical, Intelligent

Poison Elemental



Habitat: Dungeons
 Seeks Out: Adventurers
 Diet: Nothing physical
 Size: Large, Magical, Intelligent

Rat (Giant)



Habitat: Dungeons
 Seeks Out: Carrion, other giant rats
 Diet: Carnivorous
 Size: Medium

Rat Man



Habitat: Caves, dungeons, swamp, desert
 Seeks Out: Gold, other rat men
 Diet: Carnivorous
 Size: Medium, Intelligent

Reaper



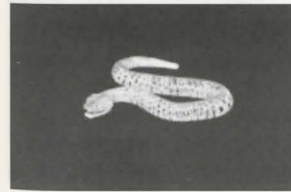
Habitat: Jungle, swamp, forest
 Seeks Out: Shadowy places
 Diet: Carnivorous
 Size: Medium

Scorpion (Giant)



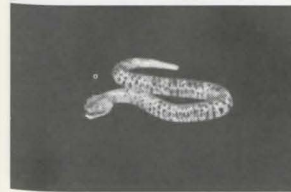
Habitat: Caves, dungeons, deserts
 Seeks Out: Dark places
 Diet: Carnivorous
 Size: Medium

Serpent (Ice)



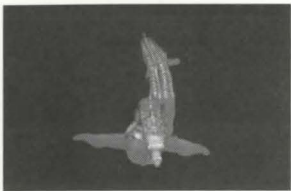
Habitat: Dungeons, arctic areas
 Seeks Out: Large game
 Diet: Carnivorous
 Size: Large

Serpent (Lava)



Habitat: Volcanic areas
 Seeks Out: Lava
 Diet: Carnivorous
 Size: Large

Serpent (Sea)



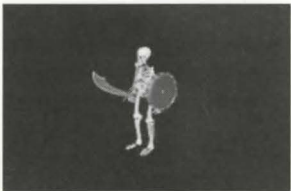
Habitat: Oceans
 Seeks Out: Ships
 Diet: Carnivorous
 Size: Large

Skeleton



Habitat: Dungeons and other haunted places
 Seeks Out: Dark places
 Diet: Nothing physical
 Size: Medium

Skeleton Knight



Habitat: Dungeons, other haunted places
 Seeks Out: Dark places
 Diet: Nothing physical
 Size: Medium

Skeleton Mage



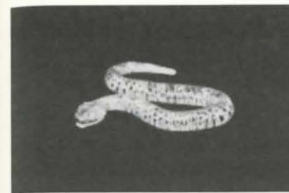
Habitat: Dungeons, other haunted places
 Seeks Out: Dark places, magic
 Diet: Nothing physical
 Size: Medium, Magical, Intelligent

Slime (Soft)



Habitat: Caves, dungeons
 Seeks Out: Gold, other slimes
 Diet: Omnivorous
 Size: Small

Snake (Giant)



Habitat: Forest, jungle
 Seeks Out: Brush
 Diet: Carnivorous
 Size: Large

Snow Elemental



Habitat: Mountains
 Seeks Out: Cold places
 Diet: Nothing physical
 Size: Large, Intelligent

Spider (Frost)



Habitat: Webs, caves, dungeons
 Seeks Out: Ice Caves
 Diet: Carnivorous
 Size: Medium, Intelligent

Spider (Giant)



Habitat: Caves, dungeons
 Seeks Out: Dark places
 Diet: Carnivorous
 Size: Medium

Swamp Tentacles



Habitat: Swamps
 Seeks Out: Food
 Diet: Carnivorous
 Size: Large, Intelligent

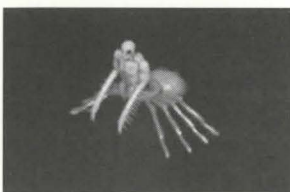
Terathan Avenger



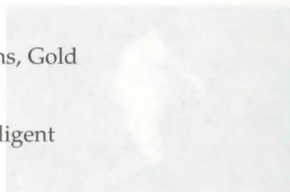
Habitat: Jungle
 Seeks Out: Terathan Matriarchs
 Diet: Carnivorous
 Size: Large, Magical, Intelligent



Terathan Drone



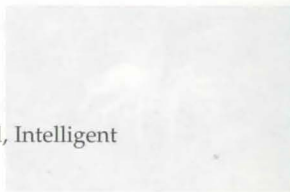
Habitat: Jungle
 Seeks Out: Other Terathans, Gold
 Diet: Carnivorous
 Size: Medium, Intelligent



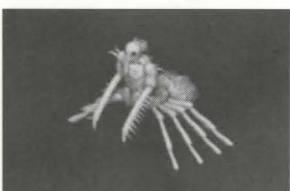
Terathan Matriarch



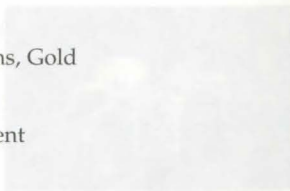
Habitat: Jungle
 Seeks Out: Gold
 Diet: Carnivorous
 Size: Large, Magical, Intelligent



Terathan Warrior



Habitat: Jungle
 Seeks Out: Other Terathans, Gold
 Diet: Carnivorous
 Size: Large, Intelligent



Titan



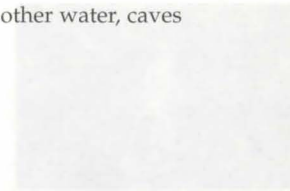
Habitat: Forest, mountains
 Seeks Out: Other Titans, Gold
 Diet: Carnivorous
 Size: Large, Magical, Intelligent



Toad (Giant)



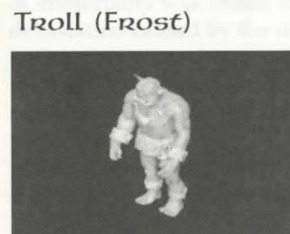
Habitat: Swamps and other water, caves
 Seeks Out: Other Toads
 Diet: Carnivorous
 Size: Medium



Troll



Habitat: Forests, mountains
 Seeks Out: Gold
 Diet: Carnivorous
 Size: Large, Intelligent



Troll (Frost)



Habitat: Mountains
 Seeks Out: Other Frost Trolls
 Diet: Carnivorous
 Size: Large, Intelligent

Water Elemental



Habitat: Oceans and rivers
 Seeks Out: Water
 Diet: Nothing physical
 Size: Large, Magical, Intelligent

Wyvern



Habitat: Caves, dungeons, mountains
 Seeks Out: Gold
 Diet: Carnivorous
 Size: Large, Intelligent

Zombie



Habitat: Dungeons
 Seeks Out: Gold
 Diet: Carnivorous
 Size: Medium, Magical



CHAPTER 25:
 THE WORLD

Introduction to Britannia™

Long before the Stranger ever entered the lands of Sosaria there was a young wizard named Mondain. As Mondain grew in age and knowledge, so grew his thirst for power. Eventually he learned of the Gem of Immortality and, after considerable effort, secured the Gem to use in a ritual that would give him ultimate power.

During the ceremony that bound the Gem to Mondain's spirit, the Gem itself captured an image of the spirit of the entire land. All of Sosaria was caught in this snapshot, save the wielder of the Gem — Mondain himself. Once imbued with the power of immortality, the Gem provided Mondain the means to rule the world— until the Stranger arrived to destroy the very source of Mondain's power, that is.

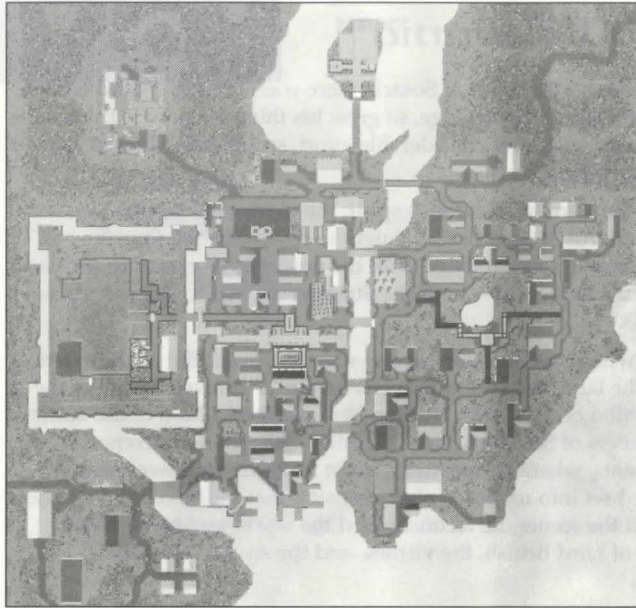
Mondain's power was gone, and with it the sorcerer himself was destroyed. But as the essence of immortality was loosed upon the land, the very multiverse began to unravel. Aware of the devastation caused by the destruction of the Gem, the Time Lord grabbed a hold of the fabric of time and space and re-wove the fibers of Sosaria, later to be called Britannia. Concerned by the results of the natural course of events, whereby one man's quest for ultimate power nearly annihilated a world, the Time Lord set into motion a plan to ensure that the land would come under the rule of the right. Behind the scenes, he reconstructed the world and maneuvered happenstance to permit the reign of Lord British, the virtues, and the Avatar. Thus the continuance of the Ultima series...

But when the Gem was shattered, thousands of splintered fragments scattered across the multiverse. Within the facets of each fragment lay the very image of Sosaria as it had been captured during Mondain's ritual. Each of these in turn became parallel instances of the world, each replete with their own version of Sosarian culture, kingdoms, and histories.

However, unlike the original Sosaria — which saw such events as the corruption of Mondain, the rise of Lord British, the quest of the Avatar, and the appearance of the Fellowship, all seeded by the efforts of the Time Lord — these Sosarias have been left to their own devices, where the rise and fall of power is often a daily occurrence. It is on one of these worlds that the adventurers of Ultima Online will come to make their fortunes and reputations...

Towns—Brief Histories

Britain



Renamed when the entire realm was given its new title — when Lord Robert was defeated on the Crimson Plains — Britain is the capital city of Britannia. Lord British's seat of power is located at what could be considered the interior vertex of the angular continent.

For its size, Britain is a clean city, very much like an English city at the end of the Medieval era, just on the cusp of the Renaissance. Magnificent stone buildings intermixed with sturdy wood-and-plaster shops and homes. In the middle of the walled-city is Lord British's marvelous castle, complete with moat and draw bridge. Overall, Britain represents that latest and best of every discipline imaginable, second only to those communities that specialize in particular disciplines (and then only in the aspects relating to those specific disciplines).

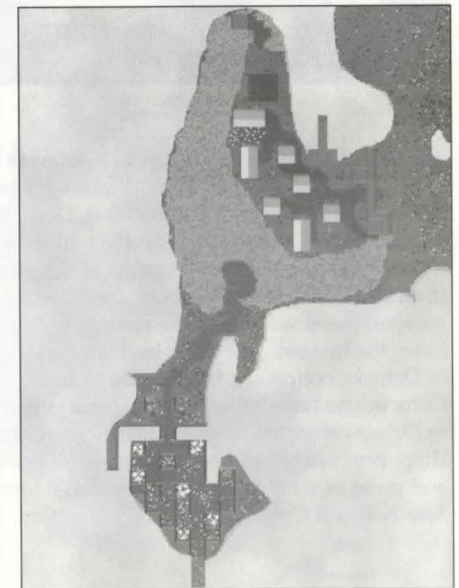
Buccaneer's Den



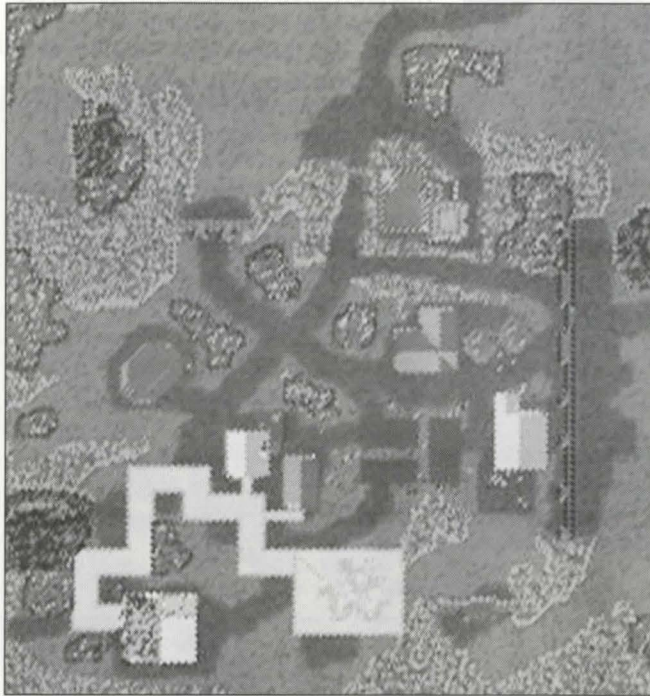
This uncivilized community is located on the large island on the southeast edge of Brittany Bay. Buccaneer's Den is less of a city or town than it is a collection of hovels and huts where privateers and pirates can hole up to avoid the law or prepare for the next excursion. With the exception of a few blacksmiths who are there to provide weapons and armour repairs, nearly all items of technology found on the island are stolen from coastal cities or plundered from unfortunate shops.

Cove

Cove is a tiny coastal village located between Britain and Vesper. This small community has but a handful of buildings, among them a farmers market, a supply shop for warriors, and a healer. There is an Orc fortress to the south that serves as a staging point for periodic Orc attacks on the town.

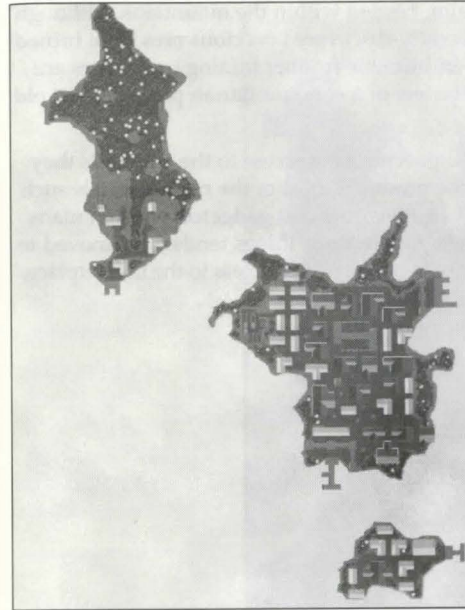


Cities and Towns of the Lost Lands - Delucia



The city of ruins, as some may call it, lies in the south-west corner of the Lost Land. It can be reached by foot quite easily by those who are not afraid to fight a few mongbats and giant spiders in the dungeon leading to it. Delucia lies well protected between large mountains and palisade walls. Miners and Smiths will most likely find this a good place to live in. There are a lot of mountains within the range of the guards protection, and the local armourer has a forge to smelt ore in. Around the city there are deer, cows and even horses grazing the grassy lands. Inexperienced warriors have enough to hunt on, and tailors will be pleased with the amount of hides the hunters will bring back to the village. Tailors will also be pleased with the cotton field in Delucia, cotton can be picked and turned into spools of thread or sold directly for gold. Delucia also has stables to leave your pet when you need to travel back to Britannia. The fields in Delucia spawn turnips and lettuce, enough to keep your pets happy. The local bank, mage shop, provisioner and healer can aid all adventurers who decide to make Delucia the start and end point of their adventures. The large town square, when viewed from above, shows a Terathan and Ophidian fighting each other.

Jhelom

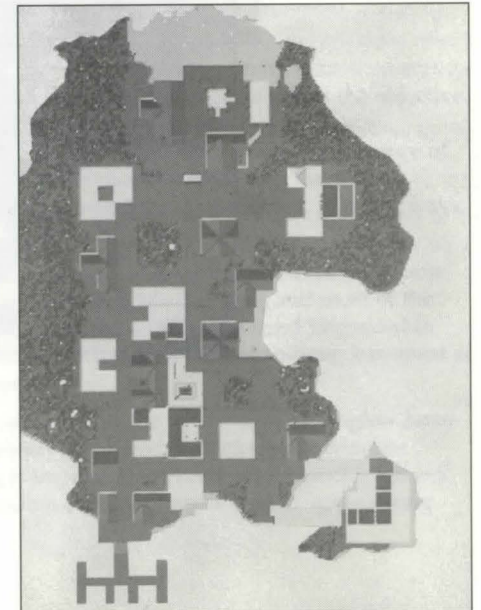


Jhelom is located on the northern tip of the largest of the Valarian Isles, surrounded by sparse jungles and rocky beaches. Jhelom is very much like a frontier town. The streets are filled wit mercenaries — some newly trained, some veterans — looking to sell their sword arms. In addition to the many training sallies, various shops and establishment have sprung up over time to service the fighters. Near the center of the middle aisle lies the arena, where warriors can test their steel and their nerves against monsters, beasts, and each other.

Magincia

On the central island between Buccaneers Den and Moonglow, Magincia is a natural target for plunder and magical side-effects. Ironically, it is the latter that tends to reduce the frequency of the former.

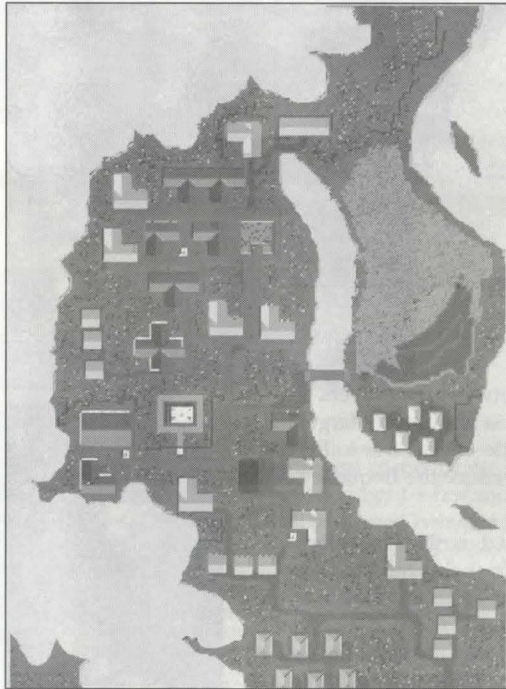
Perhaps the best way to describe Magincia is bright. But then, perhaps that is too kind. Gaudy might be more appropriate. Home to the largest diamond mine in the realm, the residents of Magincia have experience the sensation of too much money. One of the many ways in which they have found to address this problem involves constructing ridiculously ornate buildings. Structurally sound shops will often have additional columns and supports solely to provide additional places in which to inlay gemstones and gold. The street signs are lettered in real silver, while the local watch wear badges that use precious metals to indicate rank.



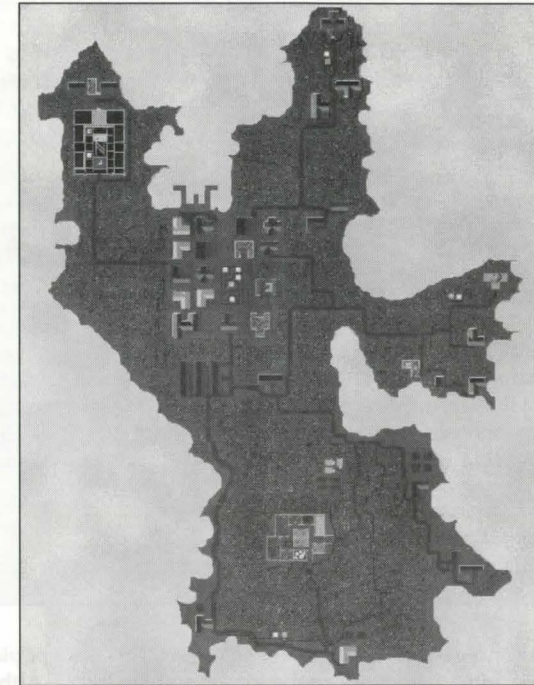
Minoc

Minoc is found in the northeastern region of the realm, nestled within the mountains. Although initially a community of artisans and gadgeteers, recently-discovered precious ores have turned it into a mining town. Minoc is essentially a rough-and-tumble frontier mining town. Furs are common, given the cold climate. It has very much the feel of a communitarian place, like an old Gold Rush city.

The Gadgeteers Guild is located in Minoc in order to provide easy access to the materials they need: the metals and ores, and the raw lumber. Minoc produces most of the raw materials such as ore and lumber for Britain, Magincia, and Vesper. Its inventors and gadgeteers design many of the nifty things found on sale in Vesper, but manufacture of these things tends to be moved to Vesper after the initial design is done in Minoc, in order to have quicker access to the marketplace.



Moonglow

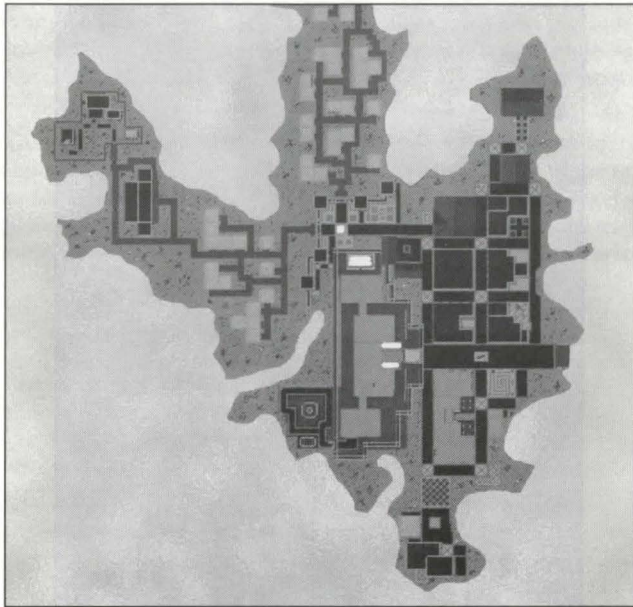


Moonglow is found on the southern tip of Verity isle, which was named to reflect the objective intellectual pursuits of the city's populace. Although the buildings were designed and constructed by the architects and masons from mainland Britannia, the overall appearance of the city is one of function over form. Buildings are sturdy and devoid of superfluous accouterments. The streets are narrow, but straightforward and well-connected. In many ways, the city looks like one large campus, with the Lycaenum as the central college.

Much of the study that goes on in Moonglow, and especially at the Lycaenum, is of the arcane arts. Nearly every form of sorcery, enchantment and potion is studied here, and most of the realm's research into new magic is performed here. Almost every great wizard interested in enhancing his or her personal abilities, or in increasing Britannia's pool of abilities, has spent at least a few months within the walls of the Lycaenum.

Not wanting to worry about the inconveniences of daily life, the residents of Moonglow have worked hard to ensure they have every contemporary labor-saving device and invention known to the realm. Although nearly everything is imported, the keen minds quickly dissect and analyze the latest gadgets, so their understanding of technology is usually quite strong.

Nujel'm/ the Pleasure City



Nujel'm is located on a remote island off the coast of Vesper. This is a hot place: bathing suits, shorts, pastel colours and filmy fabrics adorn the locals, nothing heavy. Although its level of technology is high, it exists as a place to get away from it all.

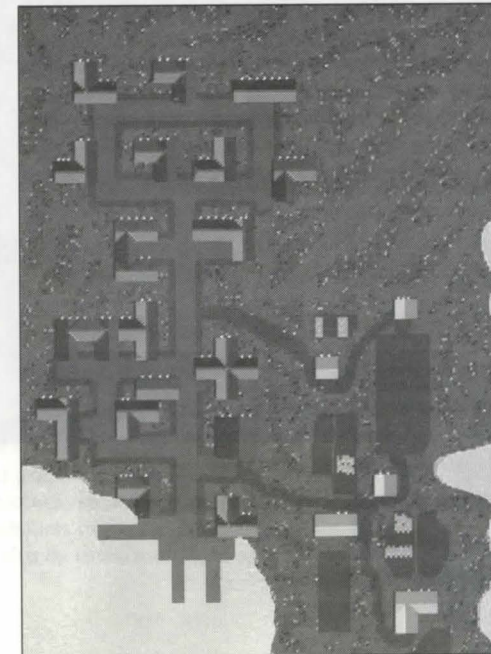
Nujel'm is built of gleaming white and orange sandstone, and of black and white marble. It is full of arches, sweeping buttresses, narrow and crowded bazaars full of cloth-draped stalls, warrens of ghettos carefully hidden from the tourist's sections, and large airy palaces with pools and Grecian style columns. Nujel'm is considered a pleasure city, and often nobles from Magincia or Moonglow can be found vacationing on its sandy beaches. There are rumors however that beneath its glittering exterior, Nujel'm is a city of corruption that nearly rivals Buc's Den.

Occllo and the Lake of Salt

The civilization of Occllo lies hidden deep in the mountains on the island south of Magincia. Their knowledge of what lies beyond their mountains is fairly limited, and to them, everything in the region is part of Huansuytin, the World. The Occllo build terraces along the mountains, upon which they grow their crops: corn and potatoes and other staples do well enough up here, but the lack of availability of fresh water is a problem for them. Mages often spend their days working at ways to get fresh water for the irrigation of the foodstuffs.

The Occllo are master stoneworkers and metalworkers, and are expert weapon makers, even though they have no neighbors to fight. In their distant past, before the various mountain tribes (and races) were unified into one culture, they must have fought long and bloody wars. Also, the great and mysterious upwelling of sea water in the Salt Lake drags in fish and creatures of the oceans, and the reed-lashed boats of the Occllo have permitted them to become expert fishermen.

Everything the Occllo have must be built out of the shades of stone found in their mountains. They bleach and they redden the gray stone, and they have a highly prized vein of white stone they use as well. Much of their work relies on the squared corner, with pillars a common trait. Most outsiders would find their style to be confining and claustrophobic, although once inside, the habitations are as colourful as the Occllo can make them. Blue and greens are predominant, mostly in weavings.

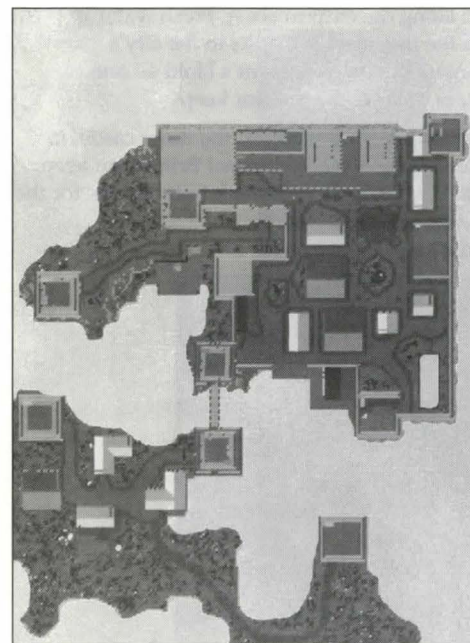


Cities and Towns of the Lost Lands - Papua

This city is best known as "Swamp City" because large regions of Papua are covered with swamps. Although this may sound unappealing, young couples will find the Just Inn the perfect haven to spend their honeymoon. Papua has a teleporter connection to the mage shop in the North of Moonglow. To travel to Moonglow you simply stand on the pentagram in the Papua mage shop and say 'recsu'. To travel back to Papua say 'recdu' when standing on the pentagram in the Moonglow mage shop. North of Papua lies the Lost Lands Desert which is the home of a lot of species, mostly aggressive. East of Papua is a very large lake which runs all the way to the north, goes beyond the lighthouse at the north end of the desert and ends west of the Desert area. Papua has a shipwright and docks. Travelers to and from Britannia can use the Serpent Pillars in the sea to reach Papua by boat. Furthermore Papua has a Carpenter, a Tinker, a Tailor, a Jeweler, an Alchemist, a Healer, a Butcher, a Blacksmith, a Baker, a Provisioner and stables.



Serpent's Hold



Constructed on the largest island just east and south of the Cape of Heroes, the Isle of Deeds, Serpent's Hold is the training grounds for nearly all of the realm's fighting population. Serpent's Hold is a single, compound structure, with an internal castle to house the Lord, Captains, and instructors, meeting halls, and mess hall.

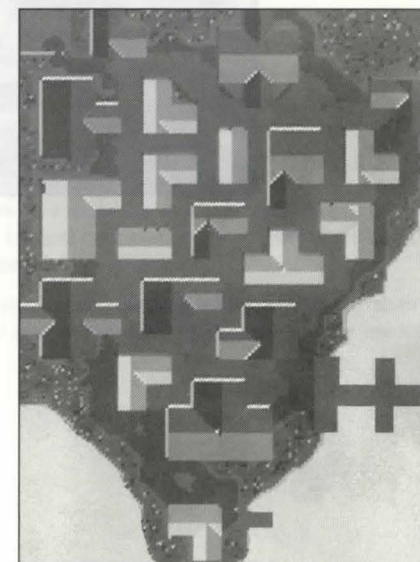
Outside of that, but within the keep walls, are the barracks, the smithy, the stables, and the training grounds. The walls are of large stone set with mortar, similar to a generic French keep of the "Middle Ages."

Serpent's Hold is less a city than it is a stronghold. Although the keep has been there for some time, very few buildings have sprung up around it. The land is not particularly favorable for farming or hunting, so no one has come to the keep seeking protection. In addition, most of the soldiers move on once they've completed their training, so the only non-warriors who have taken up residence in the area are those who can provide for the Hold's needs, such as blacksmiths, tanners, etc.

Skara Brae

Both the name for the city and the island due west of Britain, Skara Brae is a central point for sea-faring expeditions heading westward. Although as spacious as Yew, Skara Brae is a definite city. The houses are intermixed with shops, schools, and parks, all connected via stone walkways. Set renaissance villages in the medieval Scottish highlands and that is Skara Brae.

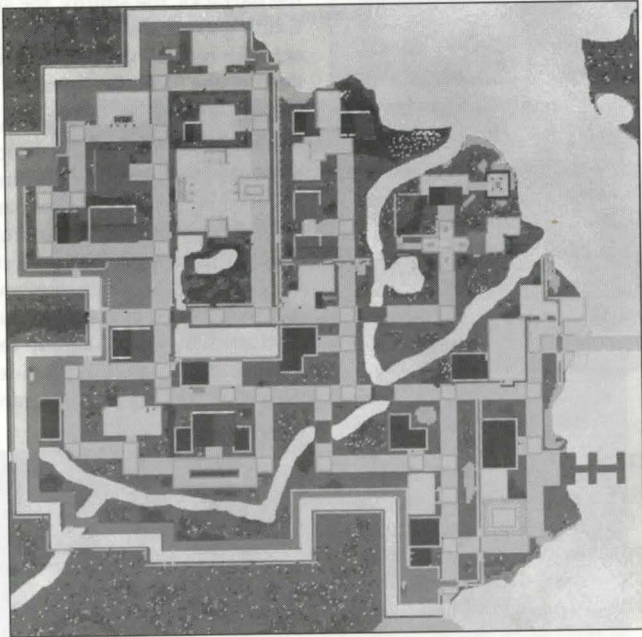
Most of the houses and shops are made of Britannian wood and plaster though the more permanent (and important) structures are made of stone. Around the outskirts of the city, the rangers set up camps, using shrubs trees, and skins as temporary shelters.



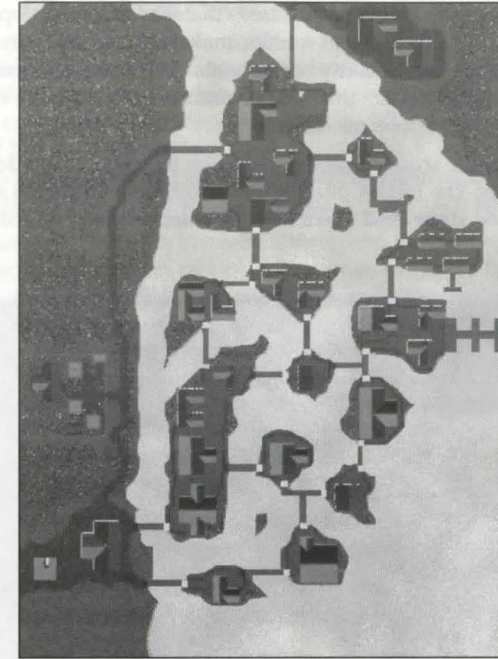
Trinsic

Trinsic is found in the southern region of Britannia, along the eastern coast. Fresh water is supplied through a river delta, doubling the size of the fish market thanks to the city's proximity to the Cape of Heroes. Trinsic is like a larger version of Serpent's Hold — one gigantic stone wall surrounds the city that completely borders the interior keep.

Nearly the entire city is made of stone, from the reinforced outer walls, to the inner castle, to the shops, homes, and schools in between. The overall style is the traditional Britannian keep, with parapets, battlements and buttresses for the main walls, and solid rock foundations for the private buildings.



Vesper



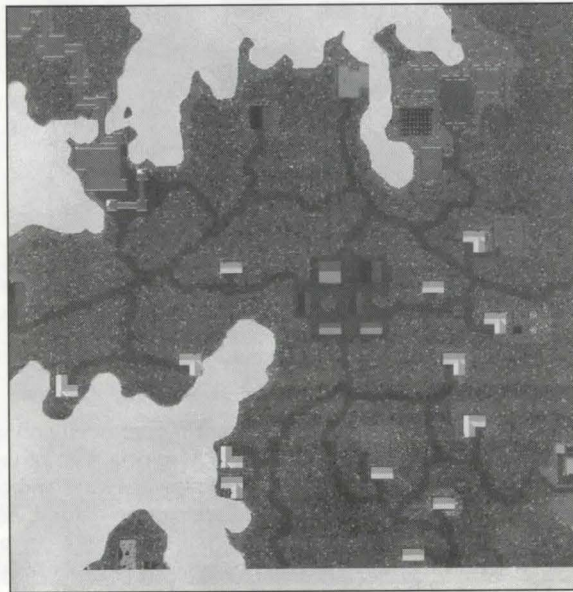
Vesper is located on the eastern coast of Britannia, the northernmost city on said coast. Its positioning almost makes it more a part of the culture of Magincia, as it serves as a major trade port for the north part of the sea. Vesper is a city of shallow waterways and canals. These canals are largely man-made, but are rough-hewn and seem quasi-natural. Although the climate in this region ranges from the temperate to the cold, Vesper is a city of strong stonework and wide open spaces that serve as breezeways. The stonework is all done by local artists and artisans and has earned Vesper a reputation as a beautiful city. The building of bridges has become an art form in Vesper. Stonework is most common, with granite slabs used everywhere. Carvings and statues appear atop columns and at cornices.

Vesper has the latest of everything, thanks to its position as both trading leader and as the main export center for inventions coming out of Minoc. The shops here carry gadgets from the useful to the inane.

Yew

Yew is located in the northwest region of Britannia, on the edge of the Deep Forest. The pastoral city is named for the dense population of Yew trees that surround it. Deep within the woods is hallowed Empath Abbey, home to diligent monks, makers of the best wine in the land. Yew is less of a city than it is a collection of many homesteads. Dirt roads connect most of the buildings, lending credence to the fact that it is a community, but often a considerable distance lies between the house of the various residents.

Most of the houses are simple wooden cabins, although the abbey is made of wood, stone and plaster to give it durability. The High Court, which also houses the land's second largest jail, is made entirely of reinforced stone, and looks like a smaller version of Lord British's castle of Serpent's Hold.



CHAPTER 26:

FELUCCA & TRAMMEL

The shards, being broken pieces of the Gem of Immortality, contain multiple facets or faces. When the Wizard Mondain was slain, his apprentice, the Enchantress Minax, escaped the Avatar by using a powerful spell that transported her to a different facet on the same shard. From here she planned her revenge, seeking a way to travel back to the original facet from whence she escaped and destroy both Lord British and the Avatar. She has found willing slaves in the creatures of the dark facet, which she calls Minaxia in her own honor.

She has unlocked the secret to traveling between shards, and has been using her willing followers to subject Lord British, and in fact all of Britannia, to attacks by her monstrous minions. At length, she forced Lord British to use all his available resources and powers to move his people and loyal followers to yet another facet of the shard, where the Virtues block Minax herself from attacking him directly. Unfortunately her minions can still make the journey into Lord British's new home, but because the Virtues hold sway over the new lands, players will find themselves unable to harm each other by direct or indirect means.

Two Similar Worlds

Minax holds complete dominion over the facet that Lord British was forced to abandon. The worlds themselves are identical, but on the Dark Facet, players hurt each other and on the Virtue Facet no player can harm another.

Which One is for You?

Despite the struggle between Minax and Lord British, the Minax facet is not a realm of pure evil, nor is the Virtue facet a land of absolute goodness. The character of *Ultima Online* is determined by the people, including you, who inhabit it. Thus, each facet will have its own strong and weak points depending on the style of play you prefer.

Advantages of the Dark Facet

The Dark Facet of *Ultima Online: Renaissance* is little different from the original *Ultima Online* that has been played by hundreds of thousands of players for years. Many players prefer the added flexibility and challenge of a game world that allows players to attack and fight one another. The Dark Facet also features a system of four player factions that can form alliances or go to war with one another, allowing for large scale player battles. Factions will largely be controlled by their members, and will therefore have varying goals and ideals. For more about factions, we recommend visiting www.uo.com.

Advantages of the Virtue Facet

On the other hand, many players prefer a game environment where you can't be killed by another player. Far from adding to the thrill of the experience, some players find that being killed by a player ruins the fun of the game for them. They find the challenge of developing their players' skills and working with other players toward common goals to be the fundamental reward of the game.

Discover Your Preference for Yourself

Although, by default, new players will be taken to the Virtue Facet, you can choose the Dark Facet, and you can travel between the two parallel worlds.

Moving between Felucca & Trammel

As the alternate facet of the shard has come to be realized, travel to this facet has been discovered. Small stones have been found on the corpses of the soldiers of the invading armies of Minax. The best attempts of Geomancers have been unable to understand their magic. The very substance of the stone changes upon examination. What has been discovered is even more disturbing. Lines of force to the two moons have been seen.

Moonstones are labeled Trammel Moonstone or Felucca Moonstone. You use the former to travel from the Dark Facet to the Virtue Facet, whereas the latter is employed if you want to travel from the Virtue Facet to the Dark Facet.

Using the stone will open a moongate. This plants the moonstone. It will then, over a period of several seconds, sink into the ground and open at the same location in the other facet, allowing you move to the other side.

If you examine a moonstone it will change colour, according to the moon cycle to which the stone is tied.

<u>Moon Cycle</u>	<u>Hue</u>
A new moon	Goldenrod
A waxing crescent moon	Ruddy-brown
In the first quarter	Deep Red
Waxing gibbous	Bluish-Purple
A full moon	Blue green
Waning gibbous	Light aqua
In the last quarter	Light purple
Waning crescent	Light grayish purple

The Faction System - Dark Facet

When Minax took over Lord British's realm, she started a rift, both among her followers, and among the followers of Lord British. Both sides split into two different groups, with different ideals, and war ensued among all 4 sides.

The rebellion began in Moonglow, where the council of Mages decided that Lord British was no longer fit to rule Britannia. He'd not only failed to protect his lands from the invading hordes, many of his own people had abandoned him and fled to the side of darkness, taking post with one of the factions of evil.

British's loyal followers tried to crush the rumors quickly that Moonglow was planning on seceding from the throne's grasp, but this only furthered their cause, making those who died or were jailed martyrs for the cause of the mages. The council of Mages now believes that what Britannia needs is a new leader, one who can not only lead Britannia against Minax, but who can also keep peace once it's restored. To this end they have begun preparations to do something drastic; call forth the Avatar.

Though they've never had to do this themselves, they are the keepers of the arcane knowledge, and they have prepared many notes and items which they will need in their quest to bring back the Stranger from another World. They oppose Minax, and Lord British, and as such are not safe from danger in either company.

Meanwhile, Minax has something of a rebellion herself occurring. Strangely enough, from within her own rank and file, there are those who are calling for the Shadow Lords to be released from the Abyss to take their rightful place as the rulers of the dark land. While her minions are grateful to Minax for allowing them the opportunity to strike terror at Lord British, they feel she is only useful as a magical tool, and is not powerful enough to lead them against Lord British for an extended period of time. To this end they have begun preparations to do something drastic of their own; call for the Shadow Lords.

Her minions are now split amongst those who would follow her, and those who wish to see her dethroned. Infighting is the only thing thus far that is keeping Minax from working out a way to breach the virtue spell that protects Lord British and his followers.

The result was four different factions, all in a constant state of war.

Joining a Faction

Factions are composed of Guilds that elect to align themselves with factions. If a Guild Master wished to join a faction, this will be reflected in his group's Guild Stone.

Caveats

A guild cannot join a faction if it is at war with one of the guilds in the faction.

A guild cannot declare war on another guild in the same faction.

Faction leaders will have the option to reject a guild.

Bank Access

Items placed in the bank on the Dark Facet side will be able to be accessed from Virtue Facet banks, and vice-versa.

CHAPTER 27: GLOSSARY

Glossary Of Commonly and Uncommonly Used Terms

:)	A happy face. An emoticon used to show happiness or pleasure.
:(An unhappy face. An emoticon used to show sadness or displeasure.
AFK	Abbreviation. Away from keyboard.
Bardy	Abbreviation/slang for Bardiche
BRB	Abbreviation. Be right back.
BS	In UO, used as an abbreviation for Blade Spirit.
Click	A press of the mouse button. When left-click or right-click is not specified, assume left-click.
Client	A client is a program which is used to communicate specifically with a server. Unlike many stand alone games, a client needs the server to be able to tell it what is on the screen and where.
Double-click	Two quick presses of the left mouse button.
Duel	Players who battle solely to see who is better. Usually done between guild members.
Dynamic	An object in the game which can be manipulated.
Emote	A way to communicate strong or implied feeling. It is usually the same as normal text, but will appear with asterisks to either side.
Emoticon	A pair or series of symbols used to express emotion.
EV	Abbreviation for the spell Energy Vortex.
GM	Gamemaster (referring to an OSI representative) Guildmaster (referring to leader of a player guild) Grandmaster (referring to skill proficiency)
Guard Whacked	Killed by a guard for committing a crime.
GUMP	Graphical User menu pop-up. Basically a graphic menu which can be closed and opened.
Hally	Abbreviation for a halberd
House	Commonly used to describe any type of player built domicile. Examples include a brick house, a tower, a castle, etc..
Justice Region	A region surrounding towns and moongates where guards punish those who break the laws of the land. (See also: Guard Whacked)

GLOSSARY

Jumper (Blade, Field)	Used in reference to players who jump into mages Blade Spirits or Field spells for the purpose of flagging the caster as a criminal. This allows them to attack the caster. Some will simply commit suicide so they can report the mage as a murderer.
Kewl d00d or K3wL D3wD	(cool dude) Someone who generally uses computer slang by replacing proper alphabetical spelling with symbols, similar sounding letters, and numbers.
l33+	Slang. Someone who knows what is cool, at least... they think so. l=L 3=E +=T. Short for elite.
Lol	abbreviation for Laughing out loud.
Looser	Slang. An insulting title given to people by rude players. Commonly thought to be a misspelled version of the word loser.
Macro	An action or series of actions assigned to a simple keystroke to ease in the use of these actions.
Manifest	To become visible as a ghost.
MiB	Abbreviation for Message in a bottle
Mobile	Anything which moves in the game, of it's own accord.
Monster	Usually a hostile NPC which is not human.
Mount	Any animal you can ride. More than horses are available...
Newbie	Abbreviated or slang term for a new player.
NPC	Non-player Character. A character in the world controlled by the computer.
np	Abbreviation for "no problem."
OOC	Abbreviation for Out of Character. When a player says something they know will be about the everyday world, sometimes they will say OOC as a warning.
Paperdoll	In UO, the representation of your character in your Character Window.
PC	Player Character. A character in the world who is controlled by a player.
PK	Abbreviation for Player Killer. A player who plays the game to murder other players.
PVP	Abbreviation for <i>Player versus Player</i> .
Regs	Slang for reagents.
ROFL	Abbreviation for Rolling On Floor Laughing.
RP	Role player. A person who plays the game and tries to stay "in-character" at all times.
Ruin	A recall rune.

GLOSSARY

Server	Where the action happens. A server takes input from various client programs, and sends out appropriate responses. A server handles requests from clients, and sends back to the client whether the request was valid. Think of the server as the head of a game of "Mother, May I?" The client program will ask to move one step forward, the server will respond that this is impossible because there is another person already in that spot, or maybe that the way is clear... so the move is valid.
Spar	To exchange weapon or magic attacks with another player without intent to cause harm, but merely to practice.
Static	An object in the game which can not be manipulated.
Tank Mage	A magic using PC who is proficient in melee combat as well.
Twink also Twinking	When a new character enters the game, some older players will offer them high-level equipment to make the new character more powerful than they normally would or should be. They will often help them win fights they could not normally win by standing back and healing them. The new character is then known as a Twink.
Xroad	Crossroads.

Notice

ELECTRONIC ARTS RESERVES THE RIGHT TO MAKE IMPROVEMENTS TO THIS PRODUCT DESCRIBED IN THIS MANUAL AT ANY TIME AND WITHOUT NOTICE.

THIS MANUAL, AND THE SOFTWARE DESCRIBED IN THIS MANUAL, IS UNDER COPYRIGHT. ALL RIGHTS ARE RESERVED. NO PART OF THIS MANUAL OR THE DESCRIBED SOFTWARE MAY BE COPIED, REPRODUCED, TRANSLATED OR REDUCED TO ANY ELECTRONIC MEDIUM OR MACHINE-READABLE FORM WITHOUT THE PRIOR WRITTEN CONSENT OF ELECTRONIC ARTS LIMITED, PO BOX 181, CHERTSEY, KT16 0YL, ENGLAND.

ELECTRONIC ARTS MAKES NO WARRANTIES, CONDITIONS OR REPRESENTATIONS EXPRESS OR IMPLIED, WITH RESPECT TO THIS MANUAL, ITS QUALITY, MERCHANTABILITY OR FITNESS FOR ANY PARTICULAR PURPOSE. THIS MANUAL IS PROVIDED "AS IS". ELECTRONIC ARTS MAKES CERTAIN LIMITED WARRANTIES WITH RESPECT TO THE SOFTWARE AND THE MEDIA FOR THE SOFTWARE. IN NO EVENT SHALL ELECTRONIC ARTS BE LIABLE FOR ANY SPECIAL, INDIRECT OR CONSEQUENTIAL DAMAGES.

THESE TERMS AND CONDITIONS DO NOT AFFECT OR PREJUDICE THE STATUTORY RIGHTS OF A PURCHASER IN ANY CASE WHERE A PURCHASER IS A CONSUMER ACQUIRING GOODS OTHERWISE THAN IN THE COURSE OF A BUSINESS.

Limited Warranty

Electronic Arts warrants to the original purchaser of this computer software product that the recording media on which the software programs are recorded will be free from defects in materials and workmanship for 90 days from the date of purchase. During such period defective media will be replaced if the original product is returned to Electronic Arts at the address at the rear of this document, together with a dated proof of purchase, a statement describing the defects, the faulty media and your return address.

This warranty is in addition to, and does not affect your statutory rights in any way.

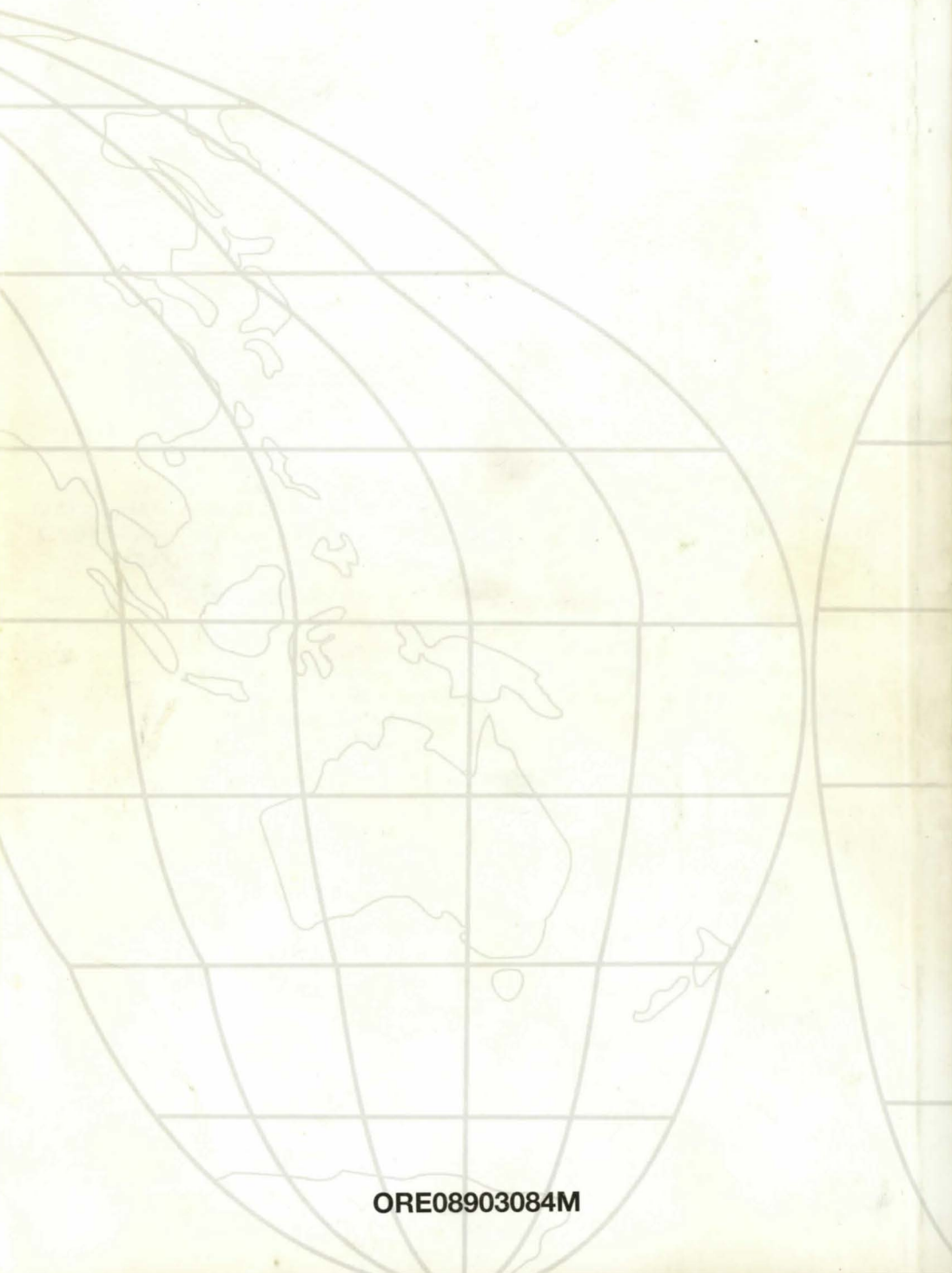
This warranty does not apply to the software program themselves, which are provided "as is", nor does it apply to media which has been subject to misuse, damage or excessive wear.

Returns After Warranty

Electronic Arts will replace user-damaged media, current stocks allowing, if the original media is returned with a cheque or postal order for £7.50 per CD, payable to Electronic Arts Ltd.

Please remember to include full details of the defect, your name, address and, where possible, a daytime telephone number where we can contact you.

Electronic Arts Customer Warranty, PO Box 181, Chertsey, KT16 0YL, UK.



ORE08903084M