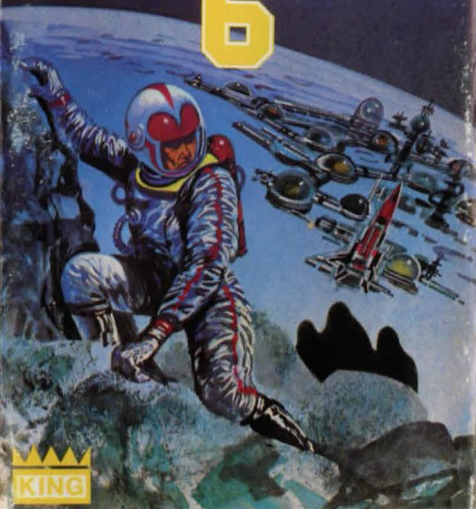


ESCAPE FROM
SYLON
6



KING

ESCAPE FROM
SYLON
6

Moonbase Sylon 6 has been attacked by a band of aliens, the SPECTRAS. The rest of your crew have been captured, only you, seeing their approach through the telescope, had sufficient time to hide in the Observation Dome. The SPECTRAS appear to have gone and you are now alone on the base — or are you? Your only chance of survival is escape. Follow the adventure to its exciting climax.

Copyright © 1984 King Software

The software on this cassette is protected by UK copyright law and any unauthorised copy or use is strictly forbidden.



Spectrum
48K

ESCAPE FROM SYLON 6



LOADING

Type LOAD"" (LOAD in capitals, no space between quote marks)

Press ENTER

Press PLAY on recorder

See 'insert' inside for help with the solution.