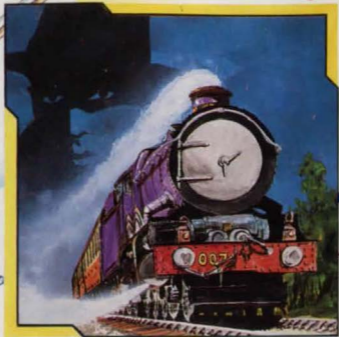


spectrum 48k

Shrewsbury Key



PLAYERS

LOADING INSTRUCTIONS

Type LOAD" (enter)

THE GAME

Shrewsbury Key is a graphical adventure game, you enter your commands in the form of two words, a verb followed by a noun, for example:-

GET MONEY

You will encounter many objects on your travels, but you may only carry a few at any one time. You are required to solve many problems to complete the adventure.

If a location has graphics you must press the enter key when you have read the text description to continue playing the game.

To save your current position, prepare your tape recorder with a blank tape and type:- SAVE, then follow the on screen instructions.

To return to this position load the game as normal, then set up your tape recorder with the tape that you used to save your position, type:- LOAD and follow the instructions.

Other words you may find useful are:-

HELP

EXAM

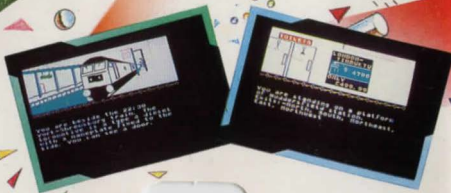
INVENT (or I)

QUIT

GET

DROP

PLAYERS



You have heard tales of a beautiful Golden Key, encrusted with diamonds, hidden somewhere in the town of Shrewsbury. The only trouble is, you live in York. Have you got a good sense of direction? If so, go forth to Shrewsbury and find the valuable treasure.

WRITTEN BY
MARK GIPSON

PRODUCED BY
RICHARD PAUL JONES

5 013728 000400



Shrewsbury Key



PLAYERS



spectrum