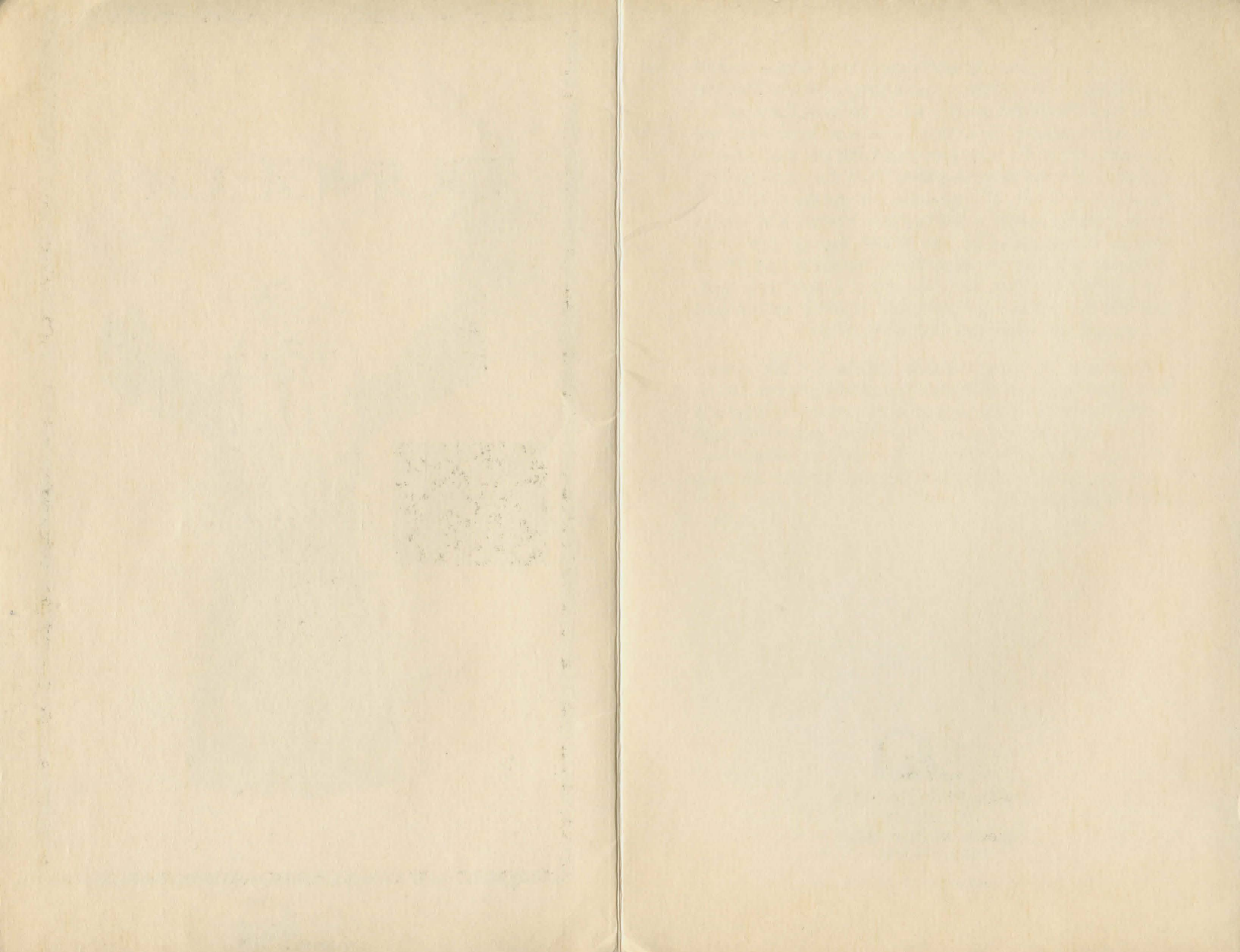


MAGICIAN'S DUNGEON

AMIGA 512K
RAM REQUIRED
CONTAINS 2 DISKS
KICKSTART 1.2 &
EXTRAS 1.2 REQUIRED
EXTERNAL DRIVE
RECOMMENDED





You live in a peaceful and happy land, until a wicked old wizard comes to town. Demanding rulership over the land he kidnaps the elders, who rule over the country, and seizes control for himself. The land is plunged into darkness. Now it's your turn to search out the wizard's dungeon and set free the elders. Find the magician and destroy his power. But beware, the dungeon is full of traps, pitfalls, secret passages and friendly and not so friendly characters. Can you search through the entire dungeon and find the wizard's hiding place and where the elders are hidden. With the help of a friend you might just find the answer. Be prepared for some serious and not so serious responses and loads of fun.

Magician's Dungeon is a full graphics and text adventure. Most every room has a full screen graphic, taking advantage of the Amiga's great graphics, color and cycling ability. You control your characters action through keyboard, menus or mouse. Type the commands you want and follow your instincts and wit. Can you save the land? If you Dare?



Mystic Plain Software

P.O. Box 178

Roseville, Michigan 48066

(313) 296-7849