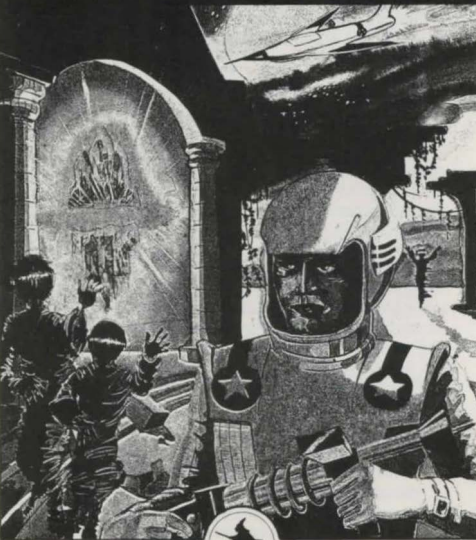


CRYSTAL

THEFT

for the Amstrad CPC 464



WICCA·SOFT

CRYSTAL THEFT INTRUCTIONS

The Vegan war began on the last day of the year 2315 with the unprovoked attack on the San Raphael colonisation convoy eleven weeks out from Earth. By the time the flight recorders from the three surviving cybernetic tugs were recovered and analysed, the colonies of Xanadu and Celcius had been destroyed by Vegan Marauder ships.

Government acceptance of the war was slow in coming, needing a final push from Colonial Officer Nina Southern who was on Babylon when the aborted Vegan attack took place. The restructuring of Earth Military Command into Earth Armed Services was swift however, as was the formation of several highly effective new fighting units. Perhaps the best known of which was the Intruder Battalion who were trained for commando-type operations by the American Rangers, British SAS and Japanese Ninja. There are persistent rumours that the outlawed Guild of Assassins from Hope also helped, but this is unproven.

From the beginning Earth and her colonies were at a disadvantage. The Vegans outnumbered them both in people and in ships, and had three major areas of supremacy:

- 1: Communications. All temples and capital ships carried a Faster Than Light communicator which centred round an artificially grown crystal which was used as a telepathic amplifier.
- 2: Speed. Vegan ships have a hyperdrive system different from that used by Humanity,

being both faster and apparently less energy-consuming.

- 3: Weapons. Ship mounted weapons tended to be more powerful than Human equivalents, and had a slightly greater range.

This was however offset by two defects. Since every aspect of Vegan life was controlled by a powerful priesthood, strategy was often weak, and potentially successful attacks were sometimes abandoned (like that on Babylon), and in the later stages of the war, disasterous ones were pressed home. However, Humanities major advantage was the existance of thousands of Artificially Intelligent computer systems which were rapidly paired with the Replicators (Von Neuman Self Replicating Machines) and were programmed to build the awesome but passive weapons systems which became the hallmark of Earth's final defences.

The effectiveness of these was best shown from the 'halo' battles where the replicator-produced self-propelled fortresses amongst the cloud of comets which orbited the sun far beyond Pluto successfully repulsed three major Vegan assaults on Earth.

This simulation that you are about to play celebrates one of the Intruder Battalion's major successes. In 2319 Intelligence reports pinpointed an abandoned temple on a minor Vegan colony world and a spider ship dropped Field Captain Jonathan Markham close to the entrance. He managed to recover a small FTL crystal, but died from his wounds on the trip back to Earth.

Since we only had his preliminary report to go on, it was thought probable that there were inaccuracies in this simulation, but military advisors and the recent release of Captain Markham's trip recorder show that we were largely correct.

This simulation runs in real time (elapsed time being found by typing TIME), and although no time limit has been set, it is perhaps worth remembering that a number of the problems do have to be solved within a certain time. A scoring system has been incorporated to help (type SCORE to see how well you are doing).

Directions are to the four compass points with occasional vertical movement as well (for example UP and DOWN a hill, and so on). Complex commands can be understood by the Semantic Analyser module, along the lines of:

TAKE THE BOOK AND READ IT or
GET THE BOOK AND THE KNIFE

Separate commands can be chained together to make complicated sentences:

GO SOUTH THEN TAKE THE KEY AND CLIMB THE ROPE

At various points throughout the adventure, the state of the game can be saved by typing SAVE, and later restored by typing RESTORE. But there are only a limited number of times that you can do this!

It was found that some of the camouflage and defence systems of the temple were still active when Captain Markham entered, and these have been duplicated where ever possible.