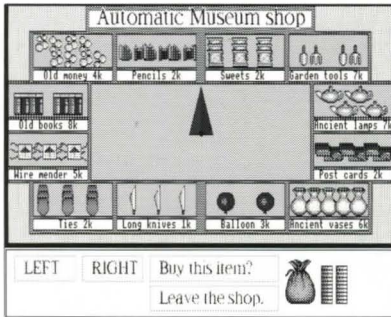


# Automatic Shop



LEFT RIGHT

Right?	0	5	10	15	20	25	30	35	40	45
	50	55	60	65	70	75	80	85	90	

Buy this item

Leave the shop

Shopping wisely will help you find Professor Roberts.

You need to move the automatic pointer in the centre of the screen so it points at the goods you want to buy.

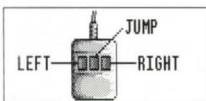
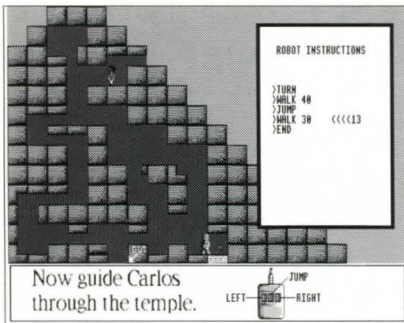
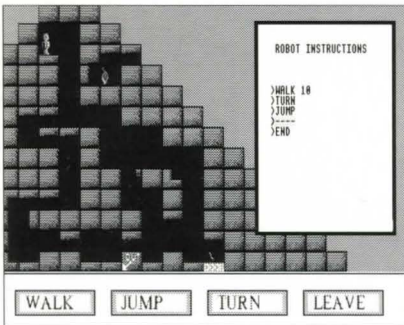
Use the mouse to select which direction you want the arrow to move.

Then select how many degrees you want the pointer to move.

When the pointer is pointing at the object you want to buy click on "**Buy this item**".

When you have bought all the items you think you will need click on "**Leave the shop**".

# The Robot Temple



You have to give the robot instructions that will make it push the door switch.

First use the mouse to move the robot through the maze. Click on one instruction at a time.

When you click on **WALK** you will have to tell the robot how far to walk by clicking on a number between 0 and 40.

After the first practice there are more mazes in the temple where you have to use the mouse to make a list of instructions. Make sure they are in the correct order.

When the robot has pushed the door switch to open the door you can lead Carlos through the maze to the exit. Use the left and right hand mouse buttons for direction and the middle button to make him jump.