

ROMIK SOFTWARE

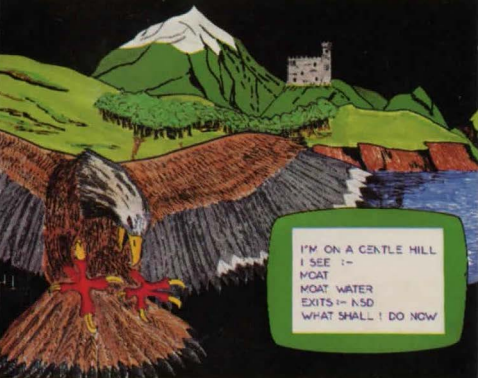


PRESENT

# ANIMAL MAGIC

FOR THE EXPANDED VIC 20  
(YOU MUST USE 16K RAM. OR MORE)

A classic text adventure . . . Complete with instructions on how to play adventures . . . You are babysitting when a huge eagle swoops down into the garden and carries off the baby . . . You must rescue the baby . . .



I'M ON A GENTLE HILL  
I SEE :-  
MOAT  
MOAT WATER  
EXITS :- NSD  
WHAT SHALL I DO NOW

AN ARTISTS IMPRESSION OF ONE  
OF THE ADVENTURE'S SCENES

To load **Animal Magic**,  
press SHIFT/RUN STOP

Welcome to the World of Adventure.

The computer will provide your senses and movement, to enable you to attempt to rescue the baby . . .

### **Instructions:**

You can usually use one or two words to instruct the computer. For example: Get Gnome, Examine Tree, Drop Lamp . . . or Go West, Go East, etc. (These can be abbreviated to W, E, etc.) You might like to try Inventory or Help.

Abbreviations often work. Also remember to think of synonyms if at first you don't succeed (for example, Up might be a synonym for Climb, Break might be a synonym for Smash, etc.)

Full instructions for the playing of adventures are included in the program.

The program is a very large one, so please do not get impatient whilst it loads.

Your position in the game may be saved to tape (not supplied) so that you can leave the game, and come back to where you left off at a later date. To save the program type:- SAVE PROG, insert a blank cassette, press RETURN.

## **HAVE YOU SEEN ALL THE OTHER PROGRAMS FOR THE VIC 20 FROM ROMIK?**

THIS CASSETTE CONTAINS ONE VERY HIGH QUALITY COPY OF THE PROGRAM. IF YOU HAVE ANY PROBLEMS LOADING THE PROGRAM, THEN RETURN IT TO ROMIK SOFTWARE LTD., AT THE ADDRESS OVERLEAF WITHIN TWO WEEKS OF PURCHASE, WITH PROOF OF PURCHASE, FOR IMMEDIATE REPLACEMENT. PLEASE ENSURE BEFORE LOADING ANY PROGRAM THAT THE HEADS OF YOUR CASSETTE DECK ARE CLEAN AND DEMAGNETISED.

WE RESERVE THE RIGHT TO SLIGHTLY ALTER THE PROGRAM FROM THIS INSERT.

CATALOGUE NO

**VIC 20  
G1021**

# ANIMAL MAGIC

CREATED BY RICHARD SLEEP

THE PROGRAM ON THIS CASSETTE IS THE COPYRIGHT OF  
**ROMIK SOFTWARE LIMITED**

NO UNAUTHORISED REPRODUCTION, HIRING OR RESALE OF  
THE PROGRAM OR PACKAGING IS PERMITTED.

**Romik Software Limited, 272 Argyll Avenue, Slough, Berks. England.**