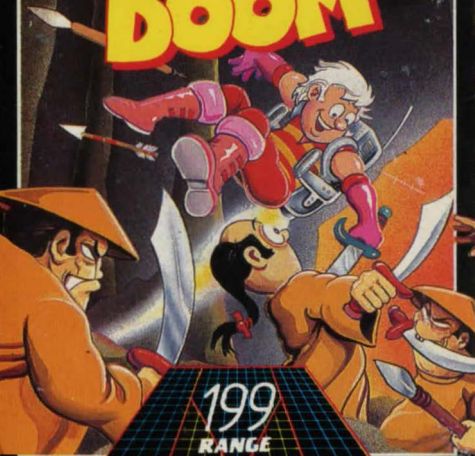


Spectrum 48k

· MASTERTRONIC ·

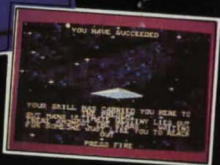
# CAVES OF DOOM



199  
RANGE

· MASTERTRONIC ·

# The Screen Displays



YOU HAVE SUCCEEDED

YOUR SKILL HAS CARRIED YOU HERE TO  
THE END OF THE GAME. YOUR  
SCORE IS 1000. YOU WILL BE  
REWARDED WITH A PRIZE.  
PRESS FIRE

---

# The Aim of the Game

---

Whilst exploring the planet Doom you were captured by the guards of the ruthless Lord of Darkness.

You are now imprisoned in caves deep within the bowels of Doom but are determined to escape. To do so you must find five keys, one of which is in three pieces, which are scattered around the caves.

However, the odds are against you as the Lord of Darkness has laid traps in the caves and has sent many thousands of his bloodthirsty minions to thwart your mission.

You are unarmed and, therefore, must use your wits to avoid certain death on Doom.

## Screen Editor

Built into the game is a screen editor with which you may view and alter the 40 locations using any of the 256 defined characters.

Press E to enter the screen editor, use the keys 5, 6, 7, 8 to move the cursor, by pressing SHIFT before these keys you can move four times as fast through the editor. Press J to move backwards and K to move forwards through the 256 defined characters.

## Controls

- 1 - Cursor Joystick
- 2 - Interface 2
- 3 - Fuller
- 4 - Kempston
- 5 - Keyboard
- O - Left
- P - Right
- A - Up
- Z - Down
- G - Start game

---

## LOADING INSTRUCTIONS

TYPE LOAD'''' (press ENTER)

---

The program code, graphic representation and artwork are the copyright of Mastertronic and may not be reproduced, stored, hired or broadcast in any form whatsoever without the written permission of Mastertronic. All rights reserved.

---

© Mastertronic Limited 1985

Made in Great Britain

Design & Artwork: Word & Pictures Ltd., London.

IS 0084

# CAVES OF DOOM

SPECTRUM 48K

You are imprisoned in caves deep within the bowels of Doom. To escape you must find 5 keys, one of which is in three pieces, which are hidden in the forty caves but the Lord of Darkness is sure to keep you trapped forever . . . or is he?

