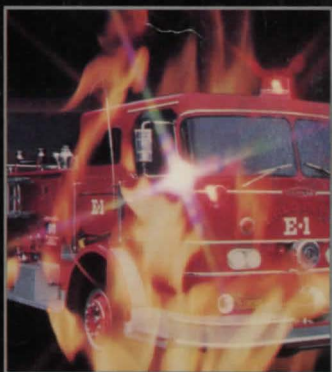
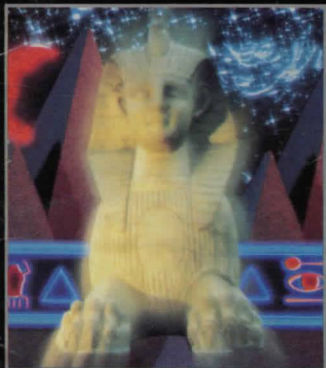


IMAGIC

VIDEO GAME CARTRIDGES FOR
MATTEL[®] & ATARI[®]
VIDEO GAME SYSTEMS



Imagic Cartridges

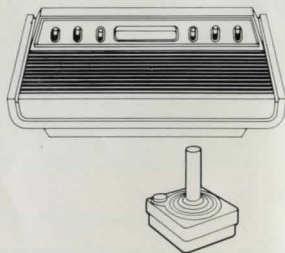
CREATED BY EXPERTS FOR EXPERTS™

Imagic video game cartridges add a new dimension of excitement to your home video experience. Whether you're playing on the Atari® Video Game System, the Atari® 400/800™ Home Computers or Mattel® Intellivision®, Imagic has you covered! Superb graphics, sensational sounds and action that never lets up put Imagic cartridges in a class by themselves. Discover the fun and challenge of Imagic. Our secret? Imagination — and a touch of magic.

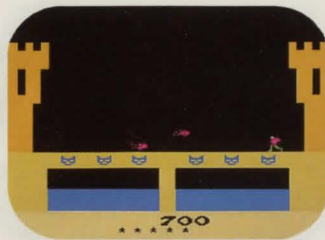
ATARI® 2600 COMPATIBLE

ATARI® VIDEO GAME SYSTEM

Brace yourself! Imagic brings you eight dynamite games for your Atari® Video Game System, including the 1982 Game of the Year, Demon Attack®. Play them all — you'll never want to stop!



IMAGIC is not affiliated with ATARI INC. or MATTEL ELECTRONICS INC.



DRAGONFIRE™

Dreadful dragons control the King's castle! The young Prince wants them banished — but first he must reclaim the royal treasures. He has to cross castle bridges, dodging dragonfire as he goes. He leaps, ducks and sprints to reach the other side!

Once across, the Prince enters a splendid storeroom. He can pocket every treasure he touches. He must grab them all before he can escape. But he must beware the deadly dragons — they follow him with their fiery breath. How many bridges can he cross? How many storerooms can he empty?





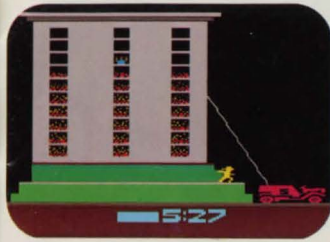
ATLANTIS

The submerged city of Atlantis battles an unrelenting enemy assault and struggles to survive. Waves of flying foes batter the city's defenses. You command the Atlantean forces. Your three missile installations guard the skies, thick with alien aircraft. Make every shot count. Track and destroy them, or knock out their flagship and pulverize the fleet. Atlantis needs your help now!



RIDDLE OF THE SPHINX™

You wander through Egypt's Valley of the Kings, seeking to solve the Riddle of the Sphinx. Pyramids, palm trees and temples dot this parching desert. A flaming phoenix appears — and beware the god Anubis! Defend yourself. Collect priceless treasures and artifacts — they'll help you on your journey to the mysterious Sphinx. A must for strategy game enthusiasts.



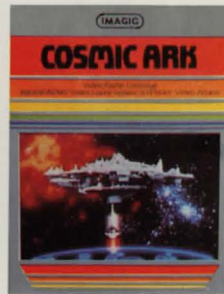
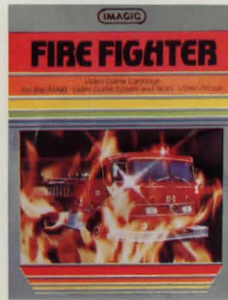
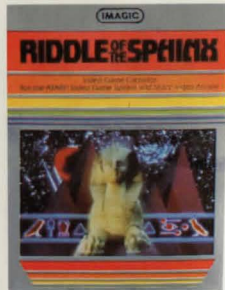
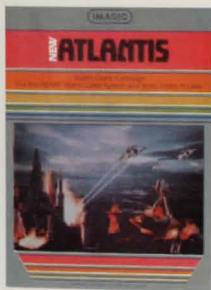
FIRE FIGHTER™

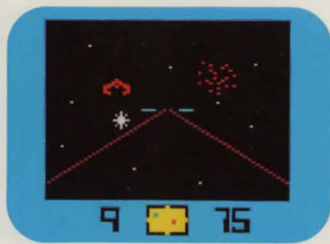
Fire Alert! Battle raging flames before they scorch a panicked victim. He's trapped in the building. He races for the roof. The blaze climbs quickly. Reach him with your ladder. Douse flames with your hose. Only you can save him! But hurry! You haven't much time. Action-packed with red-hot suspense. Fire Fighter calls for nerves of steel. It's Hero-Time!



COSMIC ARK™

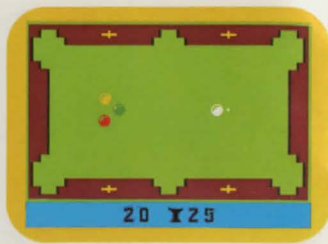
The Cosmic Ark races to bring back creatures from distant planets. The awesome Ark glides through alien space. Foes attack from every side. Destroy them — or be blasted! Reach strange and distant worlds. Send a satellite to capture the skittish beasts in your tractor beam. They may duck away. Keep trying! Transport them to the Ark before another foreign horde attacks. Your mission — to seek and save.





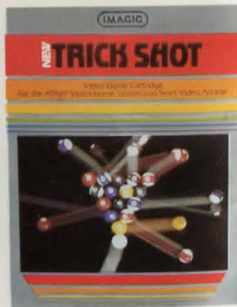
STAR VOYAGER®

You pilot the Astro-Cruiser Star Voyager through treacherous space. Your mission: penetrate the seven star portals. Radar tells you where star portals lie — and fierce enemy ships. Blast them with laser fire or photon torpedoes. Keep energy levels up — or risk destruction! Only passing through a star portal restores energy. One or two players battle to survive. Each passage becomes more perilous. But there's no turning back!



TRICK SHOT

Name your game: Pool, English Billiards or Trick Shot combinations will tax any expert. One or two players compete for the winner's trophy. Authentic game play and sounds pull you irresistibly into the action. Cushion shots and just the right touch of "English" increase the challenge. Test your poise and accuracy as you chalk up your stick for some pool hall action.



DEMON ATTACK®

Pulsating creatures scream overhead. They attack in waves. Fend them off with your laser cannon. Survival gets tougher — each barrage hits harder! Some tricky demons divide and keep coming! It's a split-second test of reflexes and instinct. Blink — but only if you must! Don't let these clever creatures catch you off guard. It's either you — or them!



ATARI® 400/800™ COMPATIBLE

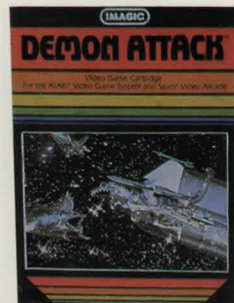
Imagic proudly presents its premiere cartridge for the Atari® 400/800™ Home Computers: *Demon Attack*®. You'll be amazed by its excellent graphics and unsurpassed game play. Imagic's *Demon Attack*® for your Atari® 400/800™ Home Computers: it's the difference between working hard — and playing **tough**. Watch for additional Imagic cartridges for these units.



DEMON ATTACK®

Marooned on the ice planet Krybor, you watch as legions of eerie creatures scream overhead. They hover ominously. Fend them off with your laser cannon — or be destroyed! Survival gets tougher!

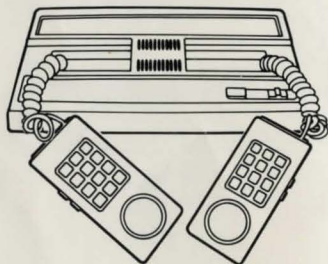
Some tricky demons divide in two and keep coming! It's a split-second test of reflexes and instinct. Don't let these clever creatures catch you off guard. It's either you — or them!



**MATTEL®
COMPATIBLE**

MATTEL® INTELLIVISION®

Imagic video games for Mattel® Intellivision® provide you with unrivalled playing pleasure. Innovative concepts, exceptional visuals, riveting game play and realistic sounds make Imagic's Mattel®-compatible cartridges the ultimate standard of quality and expert gamesmanship. Whether you're looking for awesome adventures, dire challenges or even a whimsical chase — Imagic has the video games that satisfy, with more on the way.



DRAGONFIRE™

Dragons rule the Castle!
The young Prince seeks to thwart them. He must reclaim his Kingdom's treasures. As he attempts to cross castle bridges, he dodges deadly dragonfire — and an archer's shower of arrows!

Once across the bridge, the Prince finds a fabulous store-room — and its ferocious guardian! He can take every treasure he touches, and must grab them all before he can escape. But the deadly dragons await him with an extra-warm "welcome!" Their breath can fry his hide!





DEMON ATTACK®

An awesome array of demons attack a scientific colony on the Moon. You maneuver your laser cannon across the moonscape, returning fire in an attempt to destroy an entire army of cunning demons. The more demons you kill, the tougher the next wave of demons becomes.

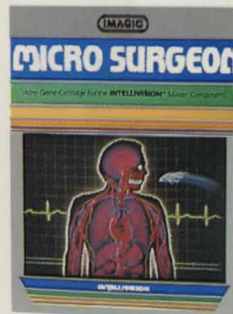
Now you are left with but one choice. . . seek out the demons' home base and end their treachery forever! But as you approach their monstrous lair, your blood chills at an unspeakable horror, perhaps the last sight you'll ever see! Try to blast through the powerful forcefield to destroy the demons once and for all!



MICROSURGEON™

The patient is critically ill! Check the patient's status chart to see which vital organs need immediate attention. Then navigate the tiny robot probe through the blood stream, outmaneuvering white blood cells that attempt to destroy you as foreign matter. Eliminate brain tumors,

cholesterol in the arteries, and tar deposits on the lungs. Get rid of kidney stones, gallstones, and cleanse the intestinal tract of tapeworms. Fight bacteria and viruses — but hurry! To save the patient's life, you must finish quickly!





BEAUTY & THE BEAST

Horrible Hank has run off with Tiny Mabel! Bashful Buford is in hot pursuit. He's got to save his girl! He climbs the Mutton Building floor by floor. Horrible Hank pelts Buford with boulders. Birds, bats and rats nearly knock him off the ledge — but he struggles on, and up!

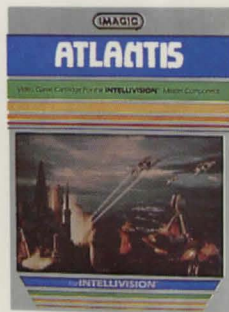
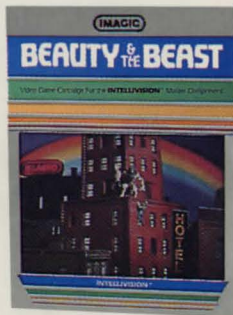
Tiny Mabel sends her heart out to Buford. If he catches her encouragement, he glows — nothing can stop him! How high can he climb? The higher they go, the harder the going gets!

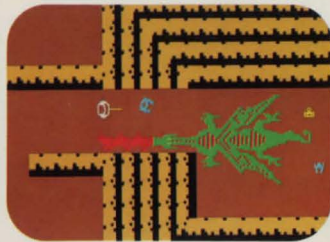


ATLANTIS

Alien spacecraft bombard the underwater city of Atlantis. Centuries of progress seem doomed. But you can't let them win . . . you won't! You man the two defense installations, firing missiles by aiming with your cross hair sights. Hit the aliens before they get close enough to destroy Atlantis!

Soon dusk appears, and then night falls. Only the constantly moving searchlights allow you to see the enemy ships. Blinded by rage, you scramble into Atlantis' last defensive spaceship and fly into the enemy-filled skies. How long can one ship survive against so many? See how many days and nights you can protect Atlantis!





SWORDS & SERPENTS™ ✓

You're the White Knight, exploring a maze-like dungeon. . . discovering rare and magical treasures. But will you live to enjoy them? Black knights attack! They pass through thick walls. Swords rend armor. . . you stagger on. More treasure awaits, but so does danger.

A friendly wizard accompanies you on your quest. Together you penetrate the hidden regions of the dungeon. Can you protect the Wizard until he learns the spells that may save you both? Will you uncover the ultimate secret of this dreary dungeon?



VIDEO STORAGE CENTER™



Organizes, Protects and Stores

- Atari® Game System (or Sears Video Arcade) and 15 cartridges
- Intellivision® Game System (or Sears Super Video Arcade) and 18 cartridges
 - durable plastic construction
 - sturdy black base
 - simulated woodgrain panel
 - smoke-tinted dust cover

Ask for it wherever you buy video games.



IMAGIC NUMB THUMB CLUB™

TAKE A SHOT AT A LOT OF FUN

We'll send you

- ★ A poster of your favorite Imagic game
- ★ A personal wallet-sized club card

PLUS

A one-year subscription to the **Numb Thumb News**, a publication featuring:

- ★ Special Club Contests
- ★ Features on high game scorers
- ★ Tips from Imagic's designers
- ★ Exclusive accessories available for purchase
- ★ New cartridge announcements

Imagic Numb Thumb Club —

"Where sore thumbs are a way of life."

Here's my check or money order for \$2.00 (no cash, please), payable to Imagic Numb Thumb Club. Please send me my poster, wallet card, and one-year subscription to **Numb Thumb News**.

Mail to: IMAGIC NUMB THUMB CLUB™
P.O. Box 2055, Saratoga, CA 95070

Poster desired (please check one):

ATARI

- | | | |
|---|---------------------------------------|-------------------------------------|
| <input type="checkbox"/> Demon Attack | <input type="checkbox"/> Star Voyager | <input type="checkbox"/> Trick Shot |
| <input type="checkbox"/> Fire Fighter | <input type="checkbox"/> Atlantis | <input type="checkbox"/> Cosmic Ark |
| <input type="checkbox"/> Riddle of the Sphinx | <input type="checkbox"/> Dragonfire | |

MATTEL

- | | | |
|--|--|--|
| <input checked="" type="checkbox"/> Demon Attack | <input type="checkbox"/> Microsurgeon | <input type="checkbox"/> Atlantis |
| <input checked="" type="checkbox"/> Beauty & The Beast | <input type="checkbox"/> Swords & Serpents | <input checked="" type="checkbox"/> Dragonfire |

name _____

address _____

city _____ state _____ zip code _____

age 7 3/4 phone _____ male female

Which Imagic cartridge(s), if any, do you own? Demon attack, Dragonfire, Beauty & The Beast,

