

ADAM

THE COLECOVISION® FAMILY COMPUTER SYSTEM

EVERYTHING YOUR
FAMILY NEEDS IN ONE
COMPLETE PACKAGE!



WHEN YOU COMPARE
FEATURES AND PRICE,
THERE'S NO COMPARISON!

ADAM™ The Family Computer System that's going to change the way you think about computers!

ADAM™ is the answer to the first question everyone asks about computers.

Before buying a computer, the first thing people ask is "What can I do with it?" Good question. Because most home computers won't do much at all...until you've spent a small fortune on a whole series of extra devices needed to make them work.

But ADAM™ has changed all that. Forever.

ADAM™ is the first *complete* family computer system. Right from the start, its built-in SmartWRITER™ word processing lets you produce flawless letters and documents every time. A SmartBASIC™ digital data pack that comes with ADAM™ puts BASIC programming right at your fingertips, too. And everyone will be playing hit

arcade games like BUCK ROGERS™ Planet of Zoom™ (also included) in dazzling new Super Game Pack format.

And ADAM™ is far more useful than other home computers because it comes packaged with everything you need. An 80K Memory Console. A professional-quality keyboard. And a SmartWRITER™ letter-quality daisy wheel printer. Plus all the software you need to back it up.

Putting together a comparable system might cost you more than twice the price. But that's not the only reason ADAM™ is a smart investment...

ADAM™ thinks like you, so you don't have to think like a computer.

Until ADAM™, people had to adapt to a computer in order to use it. This meant long hours learning the computer's "language."

But ADAM™ is designed to adjust to the way *you* think. Its unique Smart Keys "talk" to you, guiding you every step of the way, with messages that simplify word processing.

ADAM™ is unique in another way, too. It's not just one computer...it's a "family" of six micro-processors, all working in harmony as a *network*. Four are in the Memory Console, and one each in the keyboard and the SmartWRITER™ printer.

It all adds up to a more complete, more efficient system for every member of the family.

Once you interact with ADAM™, it will change the way you think about computers forever.



ADAM™ includes everything you need. All in one complete package. All at one price.

There has never been a computer package like ADAM.™ It literally includes everything you need for home computing, with a combination of features not found in any other home computer.

For example, to store data on most home computers, you have to buy a mass memory unit. But with ADAM,™ there's a high-speed digital data drive *built in*.

Using an ordinary home computer for typing involves the purchase of hard-to-learn software and a printer which often costs far more than the computer itself. ADAM™ comes with a built-in, easy-to-master SmartWRITER™ word processing program, and a matched SmartWRITER™ letter-quality daisy wheel printer.

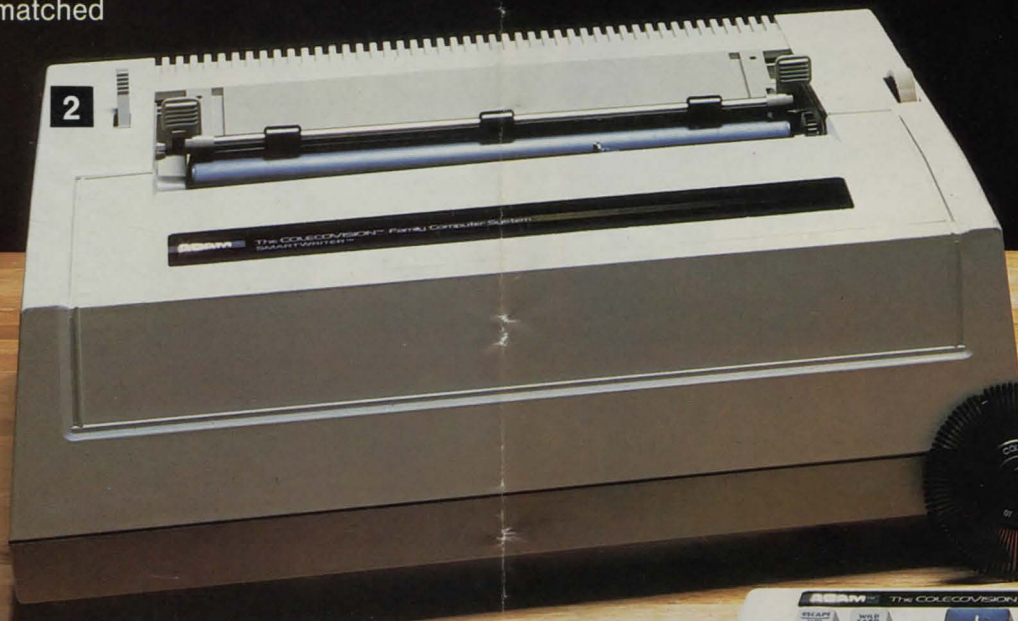
There's also a SmartBASIC™ program, a blank digital data pack for storing information, and a BUCK ROGERS™ Planet of Zoom™ Super Game Pack, which captures all the action of the hit SEGA® "3-D" arcade game.

You get all this and more, complete in one package. All at one price!

ADAM™ gives you all this:

1. 80K RAM Memory Console—more usable memory workspace than any previous home computer. Expandable to 144K with the optional memory module.

■ **Built-in high-speed digital data drive**—to run digital data packs, which hold up to 250 double-spaced, typewritten pages of information. Space for optional



second drive. (Also included is a blank digital data pack.)

- **Built-in ColecoVision® game system**—slot for ColecoVision® game cartridges.

2. SmartWRITER™ letter-quality daisy wheel printer—prints on any kind of paper up to 9½" wide, at approximately 120 words per minute.

3. Professional-quality Keyboard with 75 full-travel keys—the keyboard is sculptured and stepped, and keys are color-coded for ease of use. 21 special function keys.

4. Pair of ColecoVision® multi-function controllers—attach one to the keyboard with the included *snap-on controller cradle*, and use it to enter numbers, calculator-style. The joystick also acts as an onscreen cursor control. Or, just use them to play games.

5. Three valuable software programs:

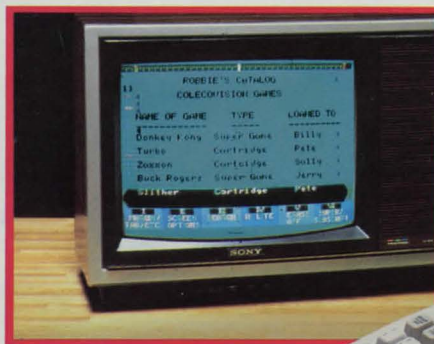
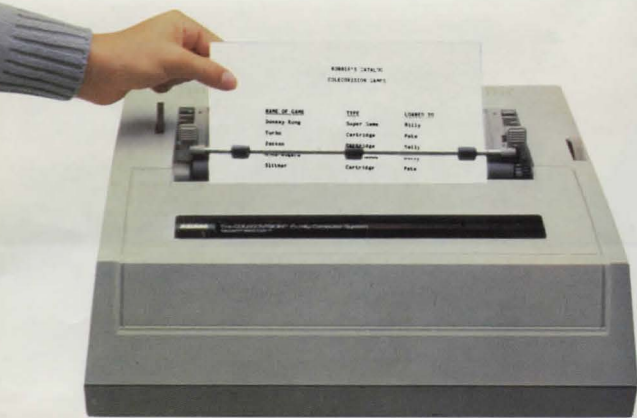
- **Built-in SmartWRITER™ Word Processing Program**—easy to learn, easy to use. Integrated, so it's always accessible.
- **ADAM™ SmartBASIC™**—the popular computer language on a digital data pack. SmartBASIC™ tells you when you've made a mistake and how to correct it. SmartBASIC™ is compatible with many AppleSoft® BASIC programs.
- **The Official BUCK ROGERS™ Planet of Zoom™**—a Super Game Pack that captures all the "3-D" action of the hit SEGA® arcade game.

6. Four easy-to-follow manuals:

- Set-up and Use
- Word Processing
- SmartBASIC™ Programming
- Super Game Play

7. Plus—expansion slots and ports for peripherals, expansion modules and ColecoVision® controllers.





ADAM™ has a wonderful way with words!

ADAM™ is the first home computer to offer *built-in* word processing. It even gives you a choice of how you want to work with words.

Just by switching on ADAM™, you have a top-quality electronic typewriter. When you type, it prints on the page. Or, press the "ESCAPE/WP" key and the ADAM™ SmartWRITER™ word processing program helps you produce letter-perfect documents every time.

ADAM™ does many of the things that expensive office word processing systems do.

"Insert,"
"delete,"
"move,"
"search,"
"replace,"
even copy whole words, sentences, or paragraphs. You can also rearrange entire documents, change margins and fix any typographical errors right on your TV screen,



before they turn up as mistakes on the printed page.

Word processing is simple with ADAM™, since Smart Keys—six multi-function black keys at the top of the keyboard—actually anticipate your next move and then "guide" you with simple mes-

sages on the screen. They even alert you to errors and then help you get back on the right track.

ADAM™ also has 10 handy Command Keys that allow you to perform a variety of tasks. Push the "STORE/GET" key to record your text on a digital data pack. If you make a mistake, press the "UNDO" key to restore text that you may have inadvertently deleted.

It can take up to 30 hours to master word processing on some computers. But with ADAM™ you can start typing and editing letters and documents within moments.

The ADAM™ 75-key professional-quality keyboard has also been designed to make word processing easier.

Its stepped and sculptured design is comparable to the keyboards of expensive office systems.

The keyboard is also movable. The coiled extension cord allows you to use it in any position that you find most comfortable...even on your lap!

Yet another outstanding feature of the word processing system is the ADAM™ SmartWRITER™ printer. It's a true letter-quality daisy wheel printer, with its own microprocessor to smoothly interface with the system. It uses standard daisy wheels, available in many different typefaces, and easy-to-change carbon multistrike ribbons. The popular "Pica 10" daisy wheel is included, as is a ribbon cartridge.

Adding a similar printer to any other home computer might cost you as much or more than the complete ADAM™ system!

ADAM™ letter-quality printing is far superior to the best results you would get from the dot matrix printers commonly sold with other home computers today. Letter-quality printing on ADAM™ looks like this:

With ADAM, each character is clear, readable and complete.

Most other computers use dot matrix printers, which are unacceptable for letter-quality work.

The SmartWRITER™ printer and word processing program and the professional keyboard all work together to give ADAM™...and you...a wonderful way with words.



ADAM™ is a talented teacher.

Computers are rapidly becoming as important to your children's education as the typewriter and calculator were to yours. And ADAM™ is the right computer system for preschoolers to teenagers. Because, like any good teacher, ADAM™ is easy to understand and makes learning fun.

The ADAM™ keyboard is a joy to use. And each of the unique software packages that have been developed is not only an educational experience, but an entertainment experience as well.

Developed by experts in their fields, this advanced software teaches on a step-by-step basis. When your children master the skills taught in the first program, they can move on to the next. They can review and replay what they've learned. As they progress, they gain new skills and knowledge.

ADAM™ Family Learning Software brings teaching into the Computer Age.

As your children grow, ADAM™ will grow along with them. Each data pack contains activities for a wide range of age/skill levels. The



software automatically adjusts to the child's level as progress is made.

What kinds of programs are there? Exciting data packs for building reading and math skills. A "Homework Helpers" series to give kids new tools for mastering a variety of subjects. A "Typing Tutorial" to teach them how to fully use the system's typing and word processing capabilities.

Also, programs designed to help every member of the family develop the fluency in computer programming that our times demand.

SmartBASIC™ is a sophisticated, yet understandable version of the popular computer language. It is source-code compatible with many AppleSoft® BASIC programs, which makes it even more useful for students who've been taught to program on Apple® Computers. And a special version of the programming graphics language, LOGO, has been written especially for ADAM™.

ADAM™ offers an impressive curriculum for the Computer Age. And it's going to advance even further, because a good teacher can only get better.

ADAM™ can make your life more organized!

Planned for introduction in '84 is SmartFILER™, the ADAM™ "data base" management system, including a series of *integrated* programs that will aid you in organizing almost any kind of information. "Integrated" software permits the use of the same data from program to program. This eliminates the need for time consuming re-entry of data on each program, making ADAM™ very convenient and efficient to use.

The SmartFILER™ series will include a *Spreadsheet* program for working out family finances or investment projections, a *Home Budgeting Organizer*, plus convenient programs for setting up your own comprehensive *Personal Datebook* and *Telephone & Address Directory*. There'll even be a handy *Spelling Checker* to automatically check and identify spelling errors.

And the special keyboard features that make SmartWRITER™ word processing so simple, function in the same way with SmartFILER™ programs. So getting organized will be easier than ever.



ADAM™ brings home all the arcade action your family can handle!

Only ADAM™, the ColecoVision® Family Computer System, gives you two outstanding ways to enjoy the best in video games.

First, ADAM™ plays new Super Game Packs.

Advanced Super Game Packs bring home all the fun and excitement of the arcade games they're based on. You'll see every subtle nuance...introduction screens, intermissions, even a "Hall of Fame" screen to record high scorers' names and totals. All this plus many new game features that you've never seen before.

And besides arcade Super Game Packs, ADAM™ is also going to

feature a selection of mind-challenging Adventure Super Game Packs. The plots include intricate mythologies and ghost stories, and you'll be right in the middle of the action!

Each Super Game Pack is a unique experience in videogaming. And *only* ADAM™ has Super Game Packs.

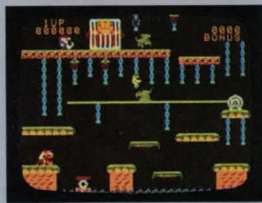
In addition to BUCK ROGERS™ Planet of Zoom™ (by SEGA®), which is included with your system, there are many other challenging games coming up soon!

BUCK ROGERS™ is a trademark of The Dille Family Trust, © 1982 The Dille Family Trust. Planet of Zoom™, ZAXXON™ and SEGA® are trademarks of SEGA ENTERPRISES, INC., © 1981, 1982 SEGA ENTERPRISES, INC. DONKEY KONG™ and DONKEY KONG JUNIOR™ are trademarks of Nintendo of America Inc., © 1981, 1982 Nintendo of America Inc. SMURF™ and GARGAMEL™ are trademarks of Peyo © 1983 Licensed by Wallace Berrie & Co., Van Nuys, CA. Pepper II™ is the trademark of Exidy Incorporated, © 1982 Exidy Incorporated. TIME PILOT™ ** © Konami Industry Co., Ltd. MR. DO!™ is a trademark of Universal Co., Ltd., © 1982 Universal Co., Ltd. War Games™ is 1983 United Artist Corp. All rights reserved. Front Line™ is a trademark of Taito America Corp. © 1982 Taito America Corp. Super Action™ is a trademark of Coleco Industries, Inc., © 1983 Coleco Industries, Inc.



Here are just a few examples:

Donkey Kong™ (by Nintendo®), a dazzling version of the all-time favorite arcade game! Mario's™ dramatic rescues are more fun than ever when you play on ADAM™.



Donkey Kong Junior™ (by Nintendo®). You will see the exciting opening cartoon sequence from the arcade, and much more, as Junior tries to save Papa Donkey Kong!™



The Official ZAXXON™ (by SEGA®) opens with an out-of-this-world spacewalk scene. There are more enemy drone planes, asteroid fortresses, even a new robot warrior to battle.



Second, ADAM™ plays all ColecoVision® cartridges, too.

Donkey Kong™ Smurf™ Rescue in Gargamel's™ Castle. Pepper II™ Time Pilot™ MR. DO!™ War Games. Front Line™ Super Action™ Baseball. All of the most-wanted arcade, adventure, and sports video games are included in the

ever-growing library of ColecoVision® cartridges. Dozens are now available...and more are on the way! All this while some other home computers can't even play game cartridges made for their own video game systems.



ADAM™

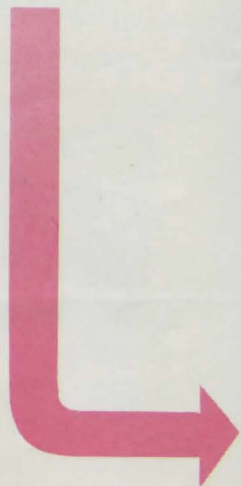
when you compare
features and price,
there's no comparison.

The retail price for ADAM™, the ColecoVision® Family Computer System, is the total price for the whole system. In many cases, ADAM™ costs less than a letter-quality printer alone.

ADAM™ is the most incredible price/value package ever offered in a computer for family use.

See for yourself. Use this chart when you go shopping for a computer for your family. Compare everything you get with ADAM™ to ordinary home computers and all the extras you'll have to buy to assemble a comparable system.

Complete your comparison by jotting down the "package" price for ADAM™ and the total price for any other system. You'll be amazed at the difference.



Compare Price

ADAM™ COLECOVISION® FAMILY COMPUTER SYSTEM	TEXAS INSTRUMENTS 99/4A™	COMMODORE® 64™	ATA 80
Console with 80K RAM	Console with 16K RAM	Console with 64K RAM	Conso 48K
INCLUDED: Mass memory storage drive with FasTRANS- FER™ circuitry	EXTRA: Expansion/ interface box	EXTRA: Printer interface	EXTRA: Letter printer
INCLUDED: SmartWRITER™ word process- ing built in	EXTRA: Extra RAM	EXTRA: Printer cable	EXTRA: Mass drive
INCLUDED: "Letter-quality" daisy wheel printer	EXTRA: Printer interface	EXTRA: Daisy wheel printer	EXTRA: Joysti (pair)
INCLUDED: 2 joystick game/cursor controllers with built-in numeric key pads	EXTRA: Printer cable	EXTRA: Mass memory drive	EXTRA: Mfg's. proce softwa
INCLUDED: Coleco's SmartBASIC™ program	EXTRA: Daisy wheel printer	EXTRA: Joysticks (pair)	EXTRA: Mfg's. word processing software
INCLUDED: The Official BUCK ROGERS™ Planet of Zoom™ arcade- quality video game	EXTRA: Mass memory drive	EXTRA: Mfg's. word processing software	EXTRA: Hit arc game
INCLUDED: Coleco's SmartBASIC™ program	EXTRA: Joysticks (pair)	EXTRA: Mfg's. word processing software	EXTRA: Hit arc game
INCLUDED: The Official BUCK ROGERS™ Planet of Zoom™ arcade- quality video game	EXTRA: Mfg's. word processing software	EXTRA: Mfg's. word processing software	EXTRA: Hit arc game
INCLUDED: The Official BUCK ROGERS™ Planet of Zoom™ arcade- quality video game	EXTRA: Hit arcade game	EXTRA: Hit arcade game	EXTRA: Hit arc game
"PACKAGE" PRICE	TOTAL PRICE	TOTAL PRICE	TOTAL

ATARI® 2600	APPLE® II E	IBM® PERSONAL COMPUTER	OTHER
Console with 64K RAM	Console with 64K RAM	Console with 64K RAM	Console _____
EXTRA: Printer interface	EXTRA: Printer interface	EXTRA: Printer interface	EXTRA _____
EXTRA: Printer cable	EXTRA: Printer cable	EXTRA: Printer cable	EXTRA _____
EXTRA: Daisy wheel printer	EXTRA: Daisy wheel printer	EXTRA: Daisy wheel printer	EXTRA _____
EXTRA: Mass memory drive	EXTRA: Mass memory drive	EXTRA: Mass memory drive	EXTRA _____
EXTRA: Joysticks (pair)	EXTRA: Joysticks (pair)	EXTRA: Joysticks (pair)	EXTRA _____
EXTRA: Mfg's. word processing software	EXTRA: Mfg's. word processing software	EXTRA: Mfg's. word processing software	EXTRA _____
EXTRA: Hit arcade game	EXTRA: Hit arcade game	EXTRA: Hit arcade game	EXTRA _____
	EXTRA: BASIC programming language	EXTRA: BASIC programming language	EXTRA _____
PRICE	TOTAL PRICE	TOTAL PRICE	TOTAL PRICE

Compare Features		ADAM™
	RAM-Min.	80K
	RAM-Max.	144K
	Plug-In ROM Cartridge	YES
	No. of Keys	75
	Separate Word Proc. Keys	YES
	No. of Columns	36
	No. Sprites (for graphics)	32
	Sound Channels	3
	AppleSoft® Compatible BASIC	YES*
	Expansion Slots	4
	Plays All ColecoVision® Games	YES
	Plays All Atari® 2600™ Compatible Games	OPTION
INCLUDES	Mass Memory Drive	YES
	Integrated Word Processor	YES
	Letter-Quality Printer	YES
	BASIC	YES
	Hit Arcade Game	YES
	Joysticks (2)	YES
	80 Column Expansion	OPTION
OPT.	CP/M® Compatibility (with appropriate peripherals)	OPTION

*Some AppleSoft® programs may not run identically.

TEXAS INSTRUMENTS 99/4A™	COMMODORE® 64™	ATARI® 800	APPLE® IIE	IBM® PERSONAL COMPUTER
16K	64K	48K	64K	64K
52K	64K	48K	128K	512K
YES	YES	YES	NO	NO
48	66	57	63	83
NO	NO	NO	NO	YES
32	40	40	40	80
32	8	4	0	0
3	3	4	1	1
NO	NO	NO	YES	NO
1	1	4	8	5
NO	NO	NO	NO	NO
NO	NO	NO	NO	NO
NO	NO	NO	NO	NO
NO	NO	NO	NO	NO
NO	NO	NO	NO	NO
NO	NO	NO	NO	NO
YES	YES	YES	YES	NO
NO	NO	NO	NO	NO
NO	NO	NO	NO	NO
NO	NO	NO	OPTION	INCLUDED
NO	OPTION	NO	OPTION	OPTION

Inside ADAM™ (technical specifications of ADAM™, the ColecoVision® Family Computer System)

Memory Console

- Z80A, 8 bit CPU, plus three other microprocessors
- 80K RAM expandable to 144K with optional 64K RAM module
- Colors—16
- Max. resolution—256H x 192V
- Max. text display—36 columns x 24 lines (optional 80-column adapter—monitor required)
- Sound channels—3. Covers 5-octave range and one white noise source
- 4 parallel BUS expansion slots (3 internal, 1 external)
- 1 ColecoVision® game cartridge slot
- 1 digital data drive with expansion port for second drive
- ADAM-Net™ expansion port for connecting up to 13 additional peripherals
- RF modulator for attachment to any TV
- Composite video output connector, including a separate audio output pin, for attachment to a monitor*

SmartWRITER™ Printer

- 10.5 CPS, approximately 120 WPM speed
- 80-column capability
- Can print super and sub-scripts
- Bi-directional printing capability
- Takes standard 96-character, 10-pitch daisy wheel printheads (Pica 10 daisy wheel included)
- Takes multistrike film ribbon cartridges (1 black ribbon included)
- Built-in microprocessor
- Takes single sheets or fanfold paper
- Friction feed standard; tractor feed optional and available soon

Keyboard

- Professional-quality "QWERTY" keyboard
- Full-travel keys are sculptured, stepped, color-coded
- Total of 75 keys and buttons
 - 10 Command Keys
 - 54 typewriter keys
 - 6 unique multi-function Smart Keys
 - 5 cursor control keys
- Built-in microprocessor



Multi-Function Joystick Controllers

- (Not included with ADAM™ Expansion Module #3)
- 12 numeric buttons on detachable numeric/keypad-controller
 - Joystick also acts as cursor control
 - Controller Cradle for attachment of one controller to keyboard

High-speed digital data packs

- Each stores the equivalent of up to 250 double-spaced pages of text
- Storage is digital for reliable data transfer
- Self booting and auto loading

Accessories included in package

- SmartBASIC™ digital data pack
- BUCK ROGERS™ Planet of Zoom™ Super Game Pack
- Built-in SmartWRITER™ word processing program
- One blank digital data pack

*not in Expansion Module #3

ADAM™ is backed by Coleco in three important ways.

1 First, over 200 service centers, nationwide, can supply you with top-quality service for ADAM.™

2 Second, our 800 toll-free customer service number —1-800-842-1225—will put you in touch with the professional help you need, when you need it.

3 Third, we guarantee ADAM.™ the ColecoVision® Family Computer System and Module to be free of defects in materials or workmanship for 90 days from date of purchase. If any component of ADAM.™ should be found factory-defective during the first 90 days, Coleco will repair or replace it at one of our service centers at absolutely no cost to you.



- Pica 10 daisy wheel
- Black film ribbon cartridge
- TV switch box*
- Video output cable*
- Power cord with AC power adapter
- 3-to-2 prong wall plug adapter
- Coiled keyboard cord
- Complete Set-Up/Introductory Manual
- ADAM™ SmartWRITER™ Word Processing Manual
- ADAM™ SmartBASIC™ Manual
- Super Game Play Manual
- Word Processing Easy Reference Guide

ADAM™ ColecoVision® ADAM-Net™ SmartBASIC™ SmartWRITER™ SmartLOGO™ SmartFILER™ FastTRANSFER™ and Super Action™ are trademarks of Coleco Industries, Inc., © 1983 Coleco Industries, Inc.

BUCK ROGERS™ is a trademark of The Dille Family Trust, © 1982 The Dille Family Trust. Planet of Zoom™ ZAXXON™ TURBO™ and SEGA® are trademarks of SEGA ENTERPRISES, INC., © 1981, 1982 SEGA ENTERPRISES, INC. DONKEY KONG™ and DONKEY KONG JUNIOR™ are trademarks of Nintendo of America Inc., © 1981, 1982 Nintendo of America Inc. SMURF™ and GARGAMEL™ are trademarks of *Harper*, © 1983 Licensed by Wallace Berrie & Co., Van Nuys, CA. Pepper II™ is the trademark of Exidy Incorporated, © 1982 Exidy Incorporated. TIME PILOT™ *© Konami Industry Co., Ltd. MR. DO!™ is a trademark of Universal Co., Ltd., © 1982 Universal Co., Ltd. War Games © 1983 United Artist Corp. All rights reserved. Front Line™ is a trademark of Taito America Corp. © 1982 Taito America Corp. Slither™ is a trademark of Century II, © 1981, Century II.

AppleSoft® is a registered trademark of Apple Computer, Inc. ATARI® and 2600™ are trademarks of Atari, Inc. Activision™ is a trademark of Activision, Inc. Imagic™ is a trademark of Imagic. Parker Brothers® is a registered trademark of Parker Brothers, Inc. IBM® and IBM PC® are registered trademarks of IBM Corporation. Commodore® 64™ is the registered trademark of Commodore Electronics, Ltd., © Copyright 1983 Commodore Electronics, Ltd. All rights reserved. Texas Instruments 99/4A™ is the trademark of Texas Instruments, © 1983 Texas Instruments, Inc. CP/M® is a registered trademark of Digital Research Inc.

There are two versions of ADAM™. One is an Expansion Module specially designed for ColecoVision® owners.

Expansion Module #3 is a complete package of hardware and software that puts all of the fully networked power of the ADAM™ computer system right in your hands. And the low price makes it irresistible.

The *Module* package includes everything (except game controllers, which you already have) that the stand-alone ADAM™ does.* And it can perform all of the same functions. The only difference is that the Memory Console in the *Module* package is specially designed to combine with your ColecoVision® game system.

As soon as you plug it into your ColecoVision®, you've got a full 80K of computer power (64K in the the Memory Console, plus the 16K ColecoVision® already contains). Of course, it's also expandable to 144K.

So, plug the ADAM™ Expansion *Module* into your ColecoVision®. You'll not only have the video game system that *plays* the most, you'll have the computer system that *does* the most.

*Except composite video connector and auxiliary video connector which are not provided with Expansion Module #3.



Assuming you already own ColecoVision®, then ADAM™ (Expansion Module #3) represents the ultimate fulfillment of our promise to you. One of the reasons so many people choose ColecoVision® is the system's *expandability*.

Unlike previous home video games, ColecoVision® is capable of keeping up with advances in technology; or, as we put it, "making obsolescence obsolete." ColecoVision® has consistently been introducing exciting new Expansion Modules and controllers.

Now comes ADAM™, the ColecoVision® Family Computer *Module*. And it will exceed even your most optimistic expectations.







ADAM™ puts more fun at your command!

Uses every ColecoVision® Expansion Module and game controller.

Expansion Module #1 will allow you to play hundreds of available Atari® 2600™ VCS compatible cartridges, including games by Atari®, Activision™, Imagic™, Parker Brothers® and many others.



Expansion Module #2 puts you behind the wheel for arcade-style racing and driving games! Includes



steering wheel, floor-operated accelerator pedal and the hit driving game cartridge, TURBO™ (by SEGA®).

ColecoVision® Super Action™ Controllers

have special triggers that give you *individual control* of four or more on-screen characters, plus a speed roller to make the action even faster! Each also has a responsive arcade-quality joystick and 12-button keypad. Set includes Super Action™ Baseball game cartridge...the most realistic video sports game yet.



ColecoVision® Roller Controller is a home version of the high-speed arcade "ball" controllers. The faster you spin the ball, the faster your onscreen characters move. Includes the popular arcade game cartridge, SLITHER™ (by Century II).

Both the Roller Controller and Super Action™ controllers can also be used with any ColecoVision® cartridge that uses a joystick.



ADAM™ Software for today and tomorrow.*

Family Learning Software

SmartBASIC™—(included in your ADAM™ package) the simple programming language that's easy to learn, easy to use. Source-code compatible with many AppleSoft® BASIC programs.

Guide to SmartBASIC™—an entertaining, instructional program which will help you master the full range of SmartBASIC™ features, including graphics.

SmartLOGO™—created especially for ADAM™! Children direct a tiny figure (the "turtle") around the screen, allowing them to draw an infinite number of color graphics and learn simple programming principles.

ADAM™ Typing Tutorial—an exciting, interactive program that teaches full use of the ADAM™ keyboard and word processing program.

ADAM™ Homework Helpers Series—shortcuts to learning, to be available in many subjects. Helps students sharpen their skills while also developing their computer proficiency.

Electronic Art Kit—the most comprehensive electronic art program yet! Allows you to create an infinite variety of graphics and colorful designs...even dimensional "sculptures." And you can store your artwork on digital data packs.

ADAM™ Adventures in Learning—an innovative series of learning activities in the areas of reading, writing, mathematics, science, and social studies. Each individual program presents entertaining challenges that allow the developing mind to explore the subject matter, instead of simply learning by rote.

Story Factory—helps children create their own stories while learning to use simple word process-

ing concepts. Then, they watch ADAM™ animate their tales in beautiful color.

SmartFILER™ Data and Filing Management System

The new, easy way to organize almost any type of information! Just plug in the SmartFILER™ Data Base/Management System. Then you will be ready to use all of the fully-integrated SmartFILER™ software programs. You can actually use data entered on one program on any of the others *without* having to re-enter it all over again. SmartFILER™ lets ADAM™ perform the multi-tasking functions necessary for an efficient data base.

SmartFILER™ Spreadsheet—creates a simple self-guiding electronic worksheet capable of handling "what-if" simulations. For example, it can help you weigh all the factors in a new car purchase, including trade-in value, option costs and all other financial variables.

SmartFILER™ Home Budgeting and Financial Organizer—a comprehensive program which allows you to develop a total home budgeting schedule. You can complete your bill-paying tasks in a fraction of the time. Even types envelopes automatically.

SmartFILER™ Personal Datebook, Diary & Time Manager—makes it easier than ever before to set up a comprehensive, long-term electronic datebook. The diary function allows you to create a permanent record of daily activities. Requires Clock/Calendar expansion card.

SmartFILER™ Telephone and Address Directory—establishes a permanent, yet easy to update record of all your important phone numbers and addresses.

SmartFILER™ Spelling Checker—integrates with word processing and all other functions to automatically check and identify your spelling errors.

Upcoming Peripherals for ADAM™

- 64K RAM Memory Expansion Module
- 80-Column Converter Card & Floppy Disk Drive
- Additional Digital Data Drive
- RS-232 Serial Interface
- Optional Tractor Feed for using computer fanfold paper in the ADAM™ SmartWRITER™ Printer
- Telephone Modem
- Clock/Calendar Expansion Card

*Some software programs and peripherals planned are not currently available. The status of these products is subject to change at any time.

COMMAND THE
POWERS OF ADAM™
and program your future!

ADAM™

THE COLECOVISION® FAMILY COMPUTER SYSTEM



ADAM

THE COLECOVISION® FAMILY COMPUTER SYSTEM



Everything You
Need in
One Package!



Word Processing

ADAM's word processing system lets you create, edit, and print letters, reports, and memos. It features a built-in spell checker and a variety of fonts and styles.

ADAM's word processing system also includes a built-in word count and a built-in word search.

ADAM's word processing system is easy to use and is perfect for the home or office.

ADAM's word processing system is a must-have for anyone who needs to create and edit documents.

ADAM's word processing system is a great way to save time and money.

ADAM's word processing system is a great way to improve your productivity.

ADAM's word processing system is a great way to make your work easier.

ADAM's word processing system is a great way to make your life better.

ADAM's word processing system is a great way to make your business more successful.

ADAM's word processing system is a great way to make your future brighter.

ADAM's word processing system is a great way to make your world a better place.

ADAM's word processing system is a great way to make your life more meaningful.

ADAM's word processing system is a great way to make your future more secure.

ADAM's word processing system is a great way to make your life more exciting.

ADAM's word processing system is a great way to make your world a better place.

ADAM's word processing system is a great way to make your life more meaningful.

ADAM's word processing system is a great way to make your future more secure.

ADAM's word processing system is a great way to make your life more exciting.

ADAM's word processing system is a great way to make your world a better place.

ADAM's word processing system is a great way to make your life more meaningful.

ADAM's word processing system is a great way to make your future more secure.

ADAM's word processing system is a great way to make your life more exciting.

ADAM's word processing system is a great way to make your world a better place.



© 1983 Coleco Industries, Inc.
999 Quaker Lane South, West Hartford, CT 06110

Printed in U.S.A.

A001-1083