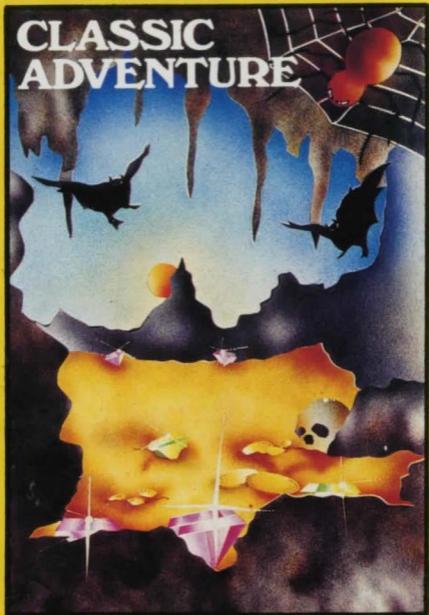


AMSOFT

CLASSIC ADVENTURE



BY ABERSOFT

LOADING INSTRUCTIONS

Reset computer by holding down CTRL,SHIFT and ESC keys together in that order. Place the cassette in the Datacorder. Rewind tape to the beginning then press STOP/EJECT once. Press CTRL and small ENTER keys simultaneously then press PLAY followed by any key. This program takes about 7½ minutes to load.

Textual Computer Adventure Games began in 1974, when Crowther and Woods wrote COLLOSAL CAVES for a main-frame computer. That first version took over 100k of memory and millions of pounds worth of computer to allow it to run.

Now, this classic adventure game is available to you on your Amstrad CPC464.

In this adventure game the computer is you, your hands and your eyes. Using simple English statements like 'GET THE BOTTLE' or 'KILL THE SNAKE', your task is to find and explore the cave system that is said to contain many fantastic treasures and get the treasures back to the building. It also contains many puzzles and traps for the unwary, so BEWARE! Deep inside these magical caves strange beings are hiding in every dark corner and many of the objects you pick up will do more harm than good.

Solving an adventure can take many weeks so it is advisable to make a map as you progress round the caves, and if you cannot progress further, backtrack and try other things, you may not yet have the knowledge to pass that point. Also the computer only takes the first four letters of a command so typing 'OPEN GRAT' instead of 'OPEN GRATE' will save you time. But you must be careful for if you go EAST, going WEST will not in most cases take you back to where you have just come from.

For information on how to play type 'INFO'. Type 'SCORE' to find out how well you are playing and 'HELP' if you are stuck. 'INVENT' will tell you which items you have on you and 'QUIT' will end the game.

To keep your adventure for further playing, type 'SAVE' and insert a blank tape when told. To restart your adventure load the master tape and type 'RESTORE'. Then put your saved adventure in the Datacorder and load.

Good luck with your adventure, and remember, 'The Wizard is Watching you'.

Amssoft

CLASSIC ADVENTURE

Abersoft

SOFT

187

CPC464

Amssoft

BRENTWOOD HOUSE

169 KINGS ROAD

BRENTWOOD

ESSEX

CM14 4EF