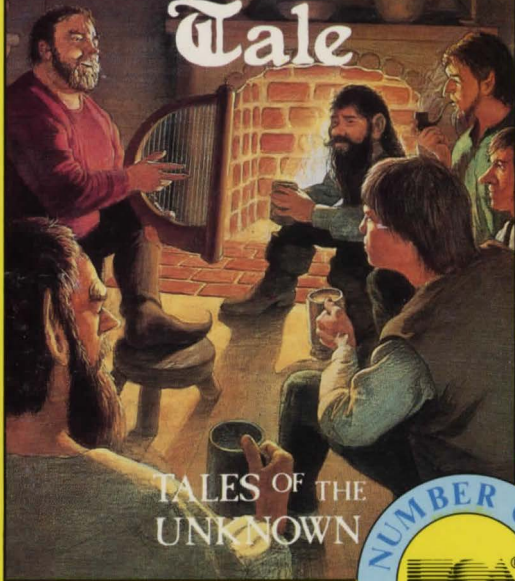


C64/128



The Bard's Tale



TALES OF THE UNKNOWN



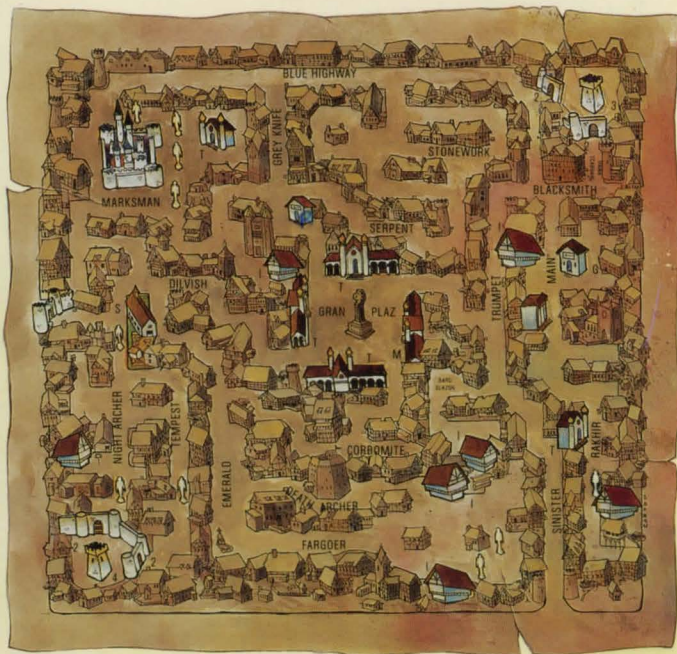
 Interplay Productions

Michael Crivello

ELECTRONIC ARTS®



Skara Brae



THE MAP OF SKARA BRAE

1 GUARDIAN STATUE 2 LOCKED GATE 3 KYLEARAN'S TOWER 4 MANGAR'S TOWER 5 CITY GATES
I INN T TEMPLE M MAD GOD'S TEMPLE AG ADVENTURER'S GUILD G GARTH'S EQUIPMENT SHOPPE

THE LEGEND OF SKARA BRAE



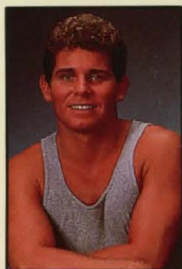
ong ago, when magic still prevailed, the evil wizard Mangar the Dark threatened a small but harmonious country town called Skara Brae. Evil creatures oozed into Skara Brae and joined his shadow domain. Mangar froze the surrounding lands with a spell of Eternal Winter, totally isolating Skara Brae from any possible help. Then, one night the town militiamen all disappeared.

The future of Skara Brae hung in the balance. And who was left to resist? Only a handful of unproven young Warriors, junior Magic Users, a couple of Bards barely old enough to drink, and some out of work Rogues.

You are there. You are the leader of this ragtag group of freedom fighters. Luckily you have a Bard with you to sing your glories, if you survive. For this is the stuff of legends. And so the story begins...



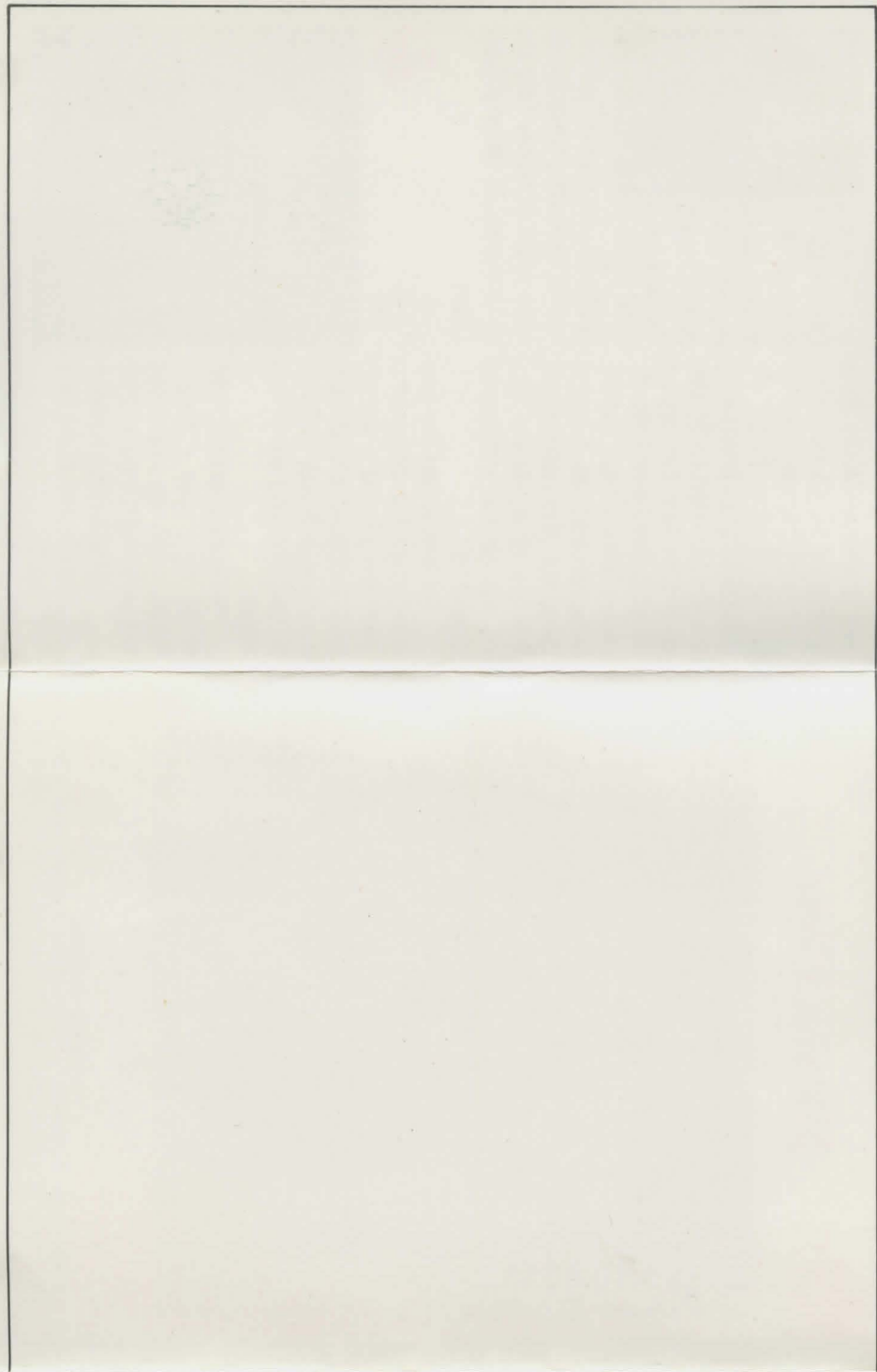
MICHAEL CRANFORD of Interplay Productions has an elegant programmer's touch. You can't see it in this picture of him, but you can see it in The Bard's Tale. He previously programmed the Apple version of Donkey Kong and the Commodore 64 version of Super Zaxxon.



ELECTRONIC ARTS®
Home Computer Software

ABOUT OUR COMPANY:

We're an association of electronic artists who share a common goal. We want to fulfill the potential of personal computing. That's a tall order, but with enough imagination and enthusiasm, we think there's a good chance for success. Our products, like this one, are evidence of our intent. If you'd like a product brochure, send a stamped SAE to: Electronic Arts, 11/49 Station Road, Langley, Slough, Berks, England.



Original Game Concept, Design and Program: Michael Cranford.
Scenario Design: Michael Cranford, Brian Fargo.
Additional Design: Roe Adams III.
Graphics: David Lowery.
C64 Music: Lawrence Holland.
Producer: Joe Ybarra.
Package Design: Grapplegroup Ltd.
Cover Painting: Eric Joyner.
Map Art: Don Carson.
C64 Programming: Michael Cranford
Amiga Programming: Troy Worrell
IBM Programming: Mike Quarles
Amstrad Programmng by SYSTEM
C64 Cassette Programming by SYSTEM
Spectrum Programming by SYSTEM
Music: Dave Warhol
Data Compression: Jay Patel
Additional Testing: Tom Norwood

Tales of the Unknown, *The Bard's Tale* and *Electronic Arts* are trademarks of Electronic Arts.

Package design © 1987, 1988 Electronic Arts.
Software © 1985 Interplay Productions. Amiga is a registered trademark of Commodore-Amiga Inc. and C64 is a registered trademark of Commodore Electronics Ltd. IBM is a registered trademark of International Business Machines.

Limited Warranty

Electronic Arts warrants to the original purchaser of this computer software product that the recording media on which the software programs are recorded will be free from defects in materials and workmanship for 90 days from the date of purchase. During such period defective media will be replaced if the original product is returned to Electronic Arts at the address below, together with a proof of purchase, a statement describing the defects, and your return address.

This warranty does not apply to the software programs themselves, which are provided "as is", nor does it apply to media which has been subject to misuse, damage or excessive wear.

This warranty is in addition to, and does not affect your statutory rights in any way.

Media Replacement

Electronic Arts will replace user damaged media if the original media is returned with a Eurocheque payable to Electronic Arts Ltd. for £5.75 (inc. VAT) for disk or £3.45 (inc. VAT) for cassette.

Electronic Arts Ltd., 11/49 Station Road, Langley, Berks SL3 8YN, England.

"THEY DISBELIEVED MY WIND DRAGON...THEY POSSESSED MY GREATER DEMON... NOW IT'S UP TO THE BARD AND HIS MAGIC FIRE HORN..." First you explored the city. Then the cellars and sewers below. Now you're trapped in Harkyn's Castle. 7 levels conquered and still 9 to go... Command 4 different classes of Magic User: Conjurer, Magician, Sorcerer and Wizard, each with unique spells. And the Bard who makes magic with his music. 85 spells in all. But choose well - the wrong spell and you're history... Pushes the power of your computer to its limits. So it's fast. It's big. And there's plenty of power for 3-D scrolling, full colour mazes, amazing sound effects and animated colour monsters. Excellent game design. Each level is demanding - and different. There are more monsters, mazes, "specials", logic puzzles, & magic items than you've ever seen in a game like this before.

THE RED DRAGON



The Bard's Tale

You are startled by a grim snarl. Before you, you see 1 Red dragon.

Ull! your stalwart band choose to (F)ight or (R)un?

Character Name	AC	Hits	Load	SpPt	Cl
DRITH THE FIST	-9	101	101	8	Pa
EL CID	-9	76	76	8	Bo
HURKIN	-3	53	53	8	Bo
HERLH	-1	76	114	11	U
SIR GRNDY	6	64	221	77	So
Other	6	62	221	121	Ha



The Bard's Tale

HERLH
Class: Wizard

Sp:15 Ld:18 Ds:18

Lvl:4 SpPt:14
DpT:1
C:0001

Press Any Key...

Character Name	AC	Hits	Load	SpPt	Cl
DRITH THE FIST	-9	101	101	8	Pa
EL CID	-9	76	76	8	Bo
HURKIN	-3	53	53	8	Bo
HERLH	-1	76	114	11	U
SIR GRNDY	6	64	221	77	So
Other	6	62	221	121	Ha

85 MAGIC SPELLS

3D SCROLLING CITY MAP



The Bard's Tale

You are on Main Street.

It's now early morning.

Character Name	AC	Hits	Load	SpPt	Cl
DRITH THE FIST	-9	101	101	8	Pa
EL CID	-9	76	76	8	Bo
HURKIN	-3	53	53	8	Bo
HERLH	-1	76	114	11	U
SIR GRNDY	6	64	221	77	So
Other	6	62	221	121	Ha



The Bard's Tale

You face east, and are:

8 levels above,
10 squares north,
1 square east of
the entry stairs.

Press a key to continue onward.

Character Name	AC	Hits	Load	SpPt	Cl
DRITH THE FIST	-9	101	101	8	Pa
EL CID	-9	76	76	8	Bo
HURKIN	-3	53	53	8	Bo
HERLH	-1	76	114	11	U
SIR GRNDY	6	64	221	77	So
Other	6	62	221	121	Ha

16 DIFFERENT MAZES

These screen shots represent C64 version. Other versions may differ.

MADE IN ENGLAND
E01042E1


ELECTRONIC ARTS®
Home Computer Software