

Taverns

- A - SCARLET BARD'S INN
- B - DRAWNBLADE INN
- C - SINISTER INN
- D - SKULL TAVERN
- E - DRAGONBREATH
- F - ASK Y'MOTHER
- G - ARCHMAGE INN

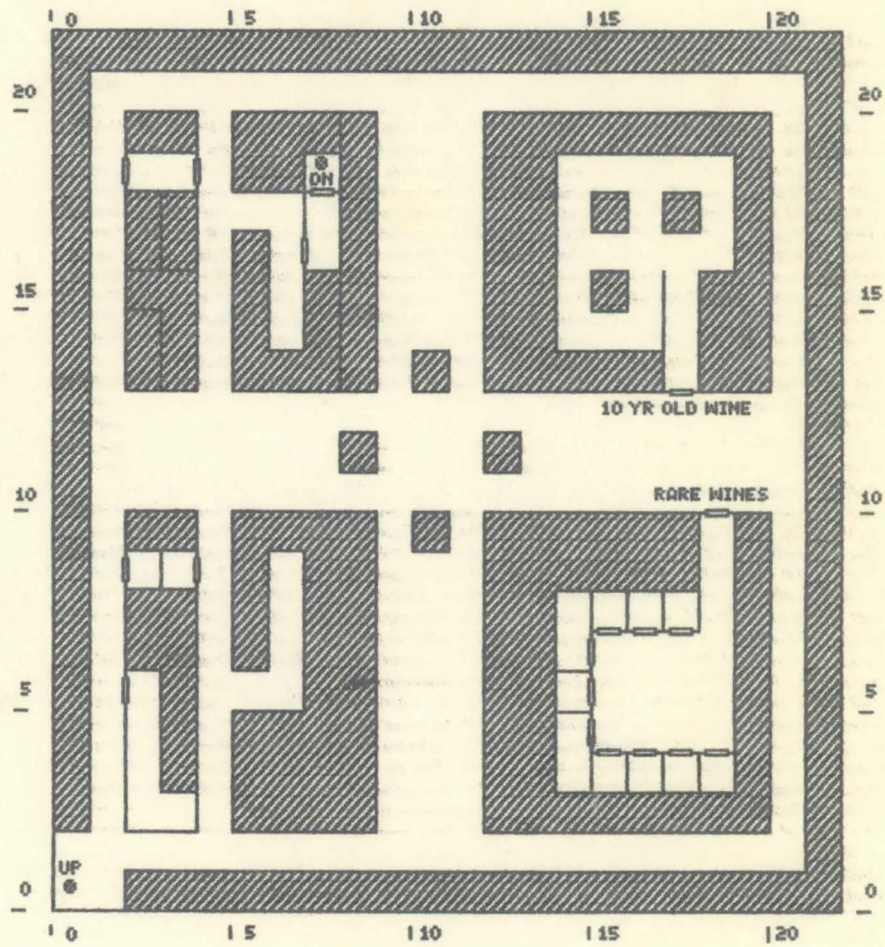
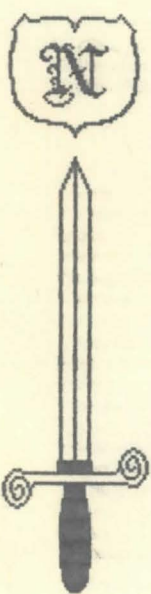
BARD'S TALE MAP OF SHARA URAH

KEYBOARD COMMANDS: O = CAST SPELL B = BARD SING P = PARTY ATTACK
 U = USE ITEM ESC = PAUSE GAME

LEGEND

- SM - SMOOTH STONE HOUSE
- RO - ROUGH STONE HOUSE
- PR - PEAKED ROOF HOUSE
- FR - FLAT ROOF HOUSE
- T - TEMPLE
- A - AMBER TOWER
- D - MANGAR'S TOWER
- - GUARDED GATES
- - LOCKED GATES

BARD'S TALE WINE CELLAR BENEATH BARD'S TAVERN



- LEGEND**
- - STAIRS
 - | - DOOR
 - ▨ - AREA NORMALLY INACCESSABLE (CONTAINS NOTHING)

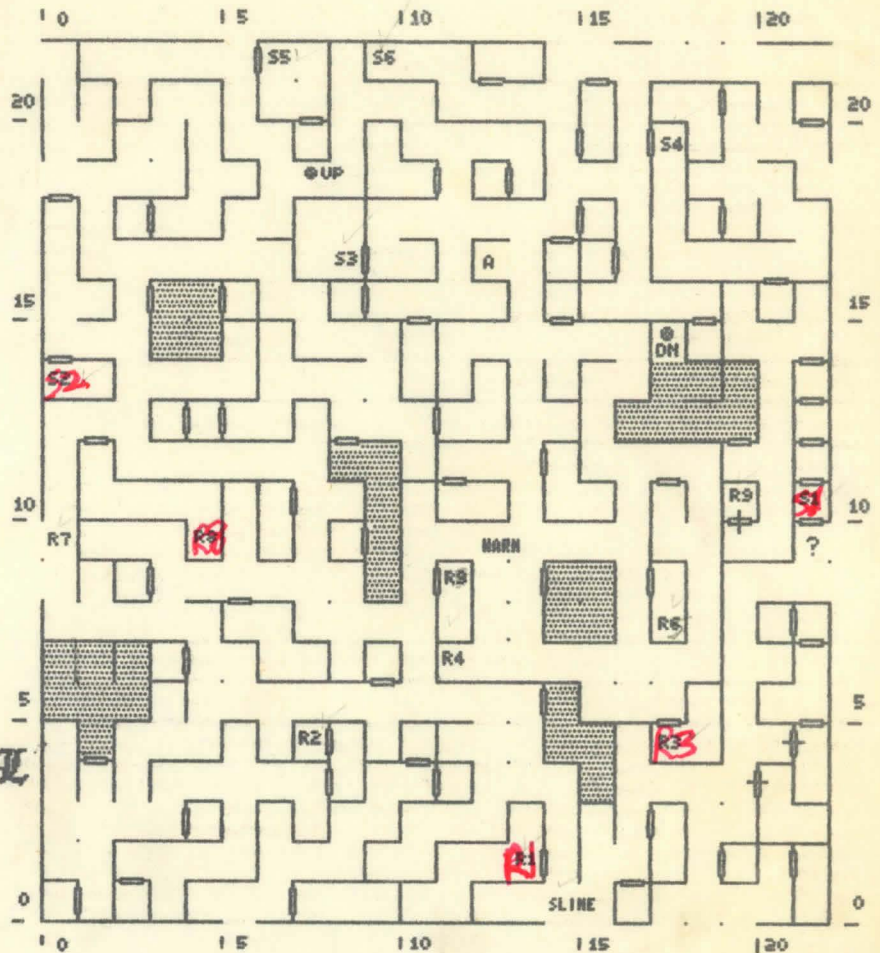
WARD'S TALE MAP OF DE SCHEER BENEATH DE CELLAR BENEATH WARD'S Tavern



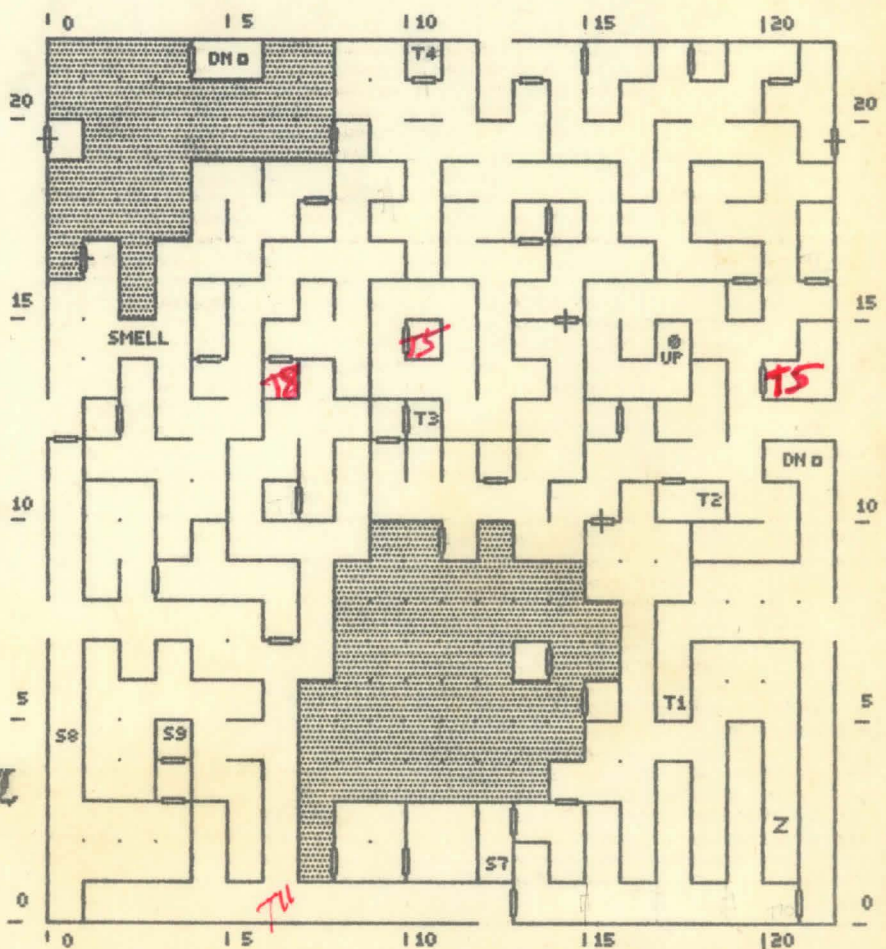
LEGEND

- R1 - 4 BLACK WIDOWS
- R2 - GIANT SPIDER ETCHED ON WALL
- R3 - 3 BLACK WIDOWS
- R4 - ZAPS PARTY TO 'A'
- R5 - WALL: GOLEMS ARE MADE OF STONE
- R6 - 8 SPIDERS
- R7 - SOMETHING STRANGE GOING ON
- R8 - STATUE OF LARGE SPIDER - (BECOMES SPINNER)
- R9 - WALL: "IRKM DESMET DAEM"
- S1 - 5 BLACK WIDOWS
- S2 - 3 BLACK WIDOWS
- S3 - 7 SPIDERS
- S4 - 4 BLACK WIDOWS
- S5 - 6 SPIDERS
- S6 - WALL: "PASS THE LIGHT AT NIGHT"
- S7 - "THOR IS THE GREATEST SON OF ODIN"
- S8 - BEAM OF SUNLIGHT - CAUSES SEVERE HITS TO ALL CHARACTERS
- S9 - THE STONE MOUTH SAYS, "KNOW THIS THAT A MAN CALLED TARJAN, THOUGHT TO MANY TO BE INSANE HAD THROUGH WIZARDLY POWERS PROCLAIMED HIMSELF A GOD IN SKARA BRAE, A HUNDRED YEARS AGO. HIS IMAGE IS LOCKED IN STONE UNTIL MADE WHOLE AGAIN..."
- T1 - ZAPS TO 'Z'
- T2 - "HEED NOT WHAT IS BEYOND UNDERSTANDING"
- T3 - "THERE IS NO EXIT UNTIL THE SEVEN WORDS ARE SAID"
- T4 - ROTTED CLOTHES & BONES
- - DARKNESS/SMOKE
- ⊕ - HIDDEN DOOR
- - PORTALS (E=UP, D=DOWN)
- ⊙ - STAIRS

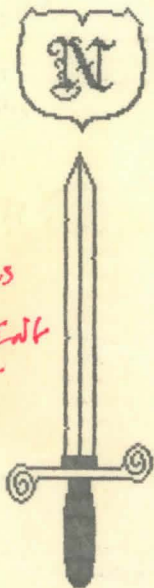
LEVEL 1



LEVEL 2



*TV TRACKS
HERE
LEAVING
FAST*

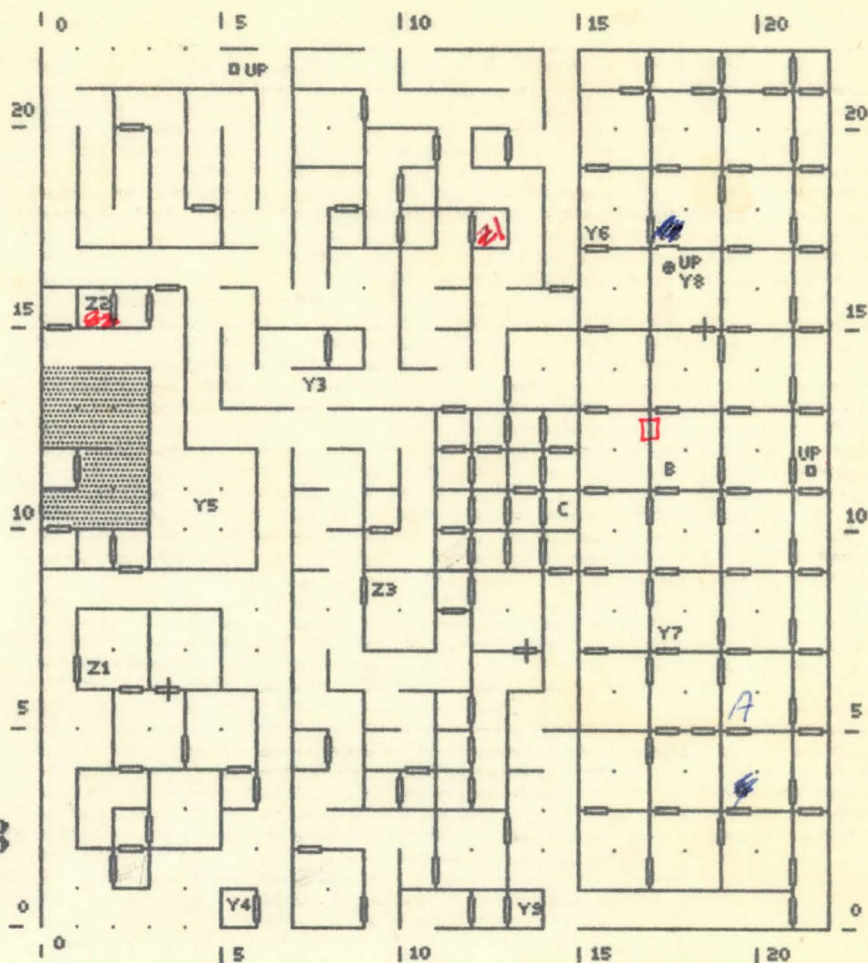


BARD'S TALE MAP OF THE SEWER BENEATH THE CELLAR BENEATH BARD'S TOWER

LEGEND

- Y3 - "THE HAND OF TIME WRITES AND CANNOT ERASE."
- Y4 - "SEEK THE SHARE FROM BEHIND THE SCENES."
- Y5 - CONFUSES COMPASS
- Y6 - ZAPS PARTY TO 'A'
- Y7 - ZAPS PARTY TO 'B'
- Y8 - STAIRS LEAD UP TO MANGAR'S TOWER
- Y9 - ZAPS PARTY TO 'C'
- Z1 - 3 SPINNERS
- Z2 - 7 BLACK WIDOWS
- Z3 - 5 BLACK WIDOWS
- D - PORTAL
- - DARKNESS / SMOKE
- ⊕ - HIDDEN DOOR (ARROW=ONE WAY)

LEVEL 3



BARB'S TAVERN

CATACOMBS



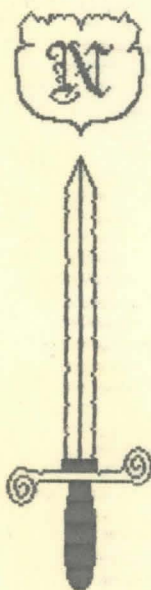
LEGEND



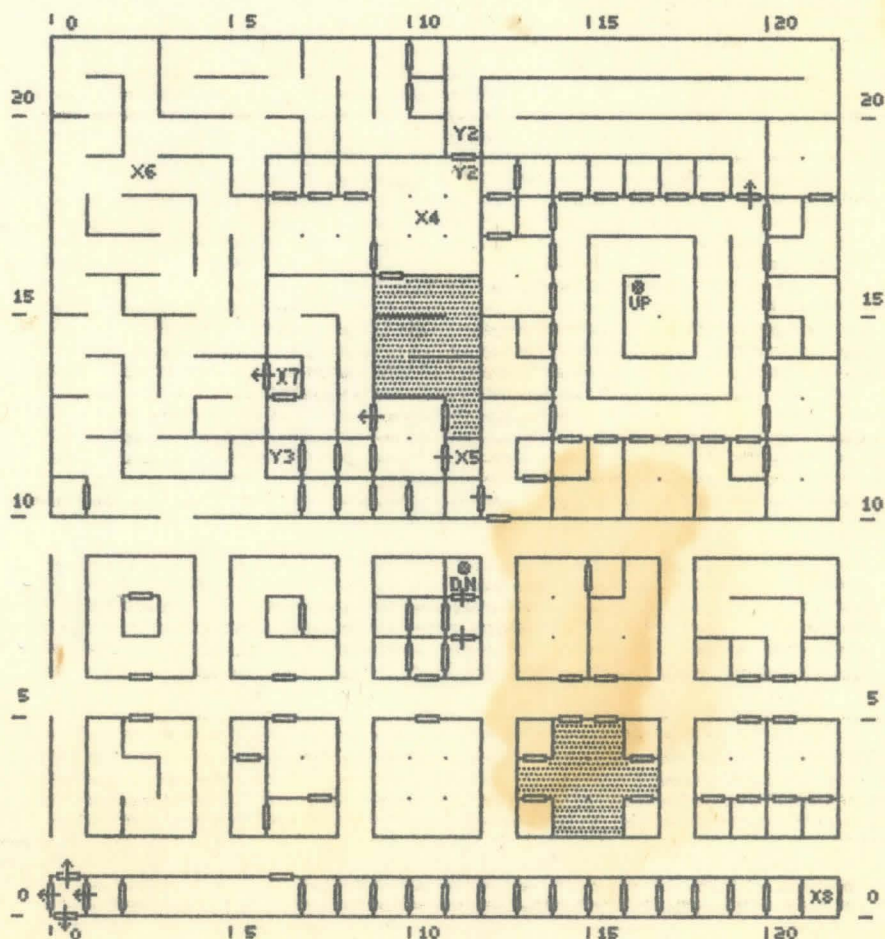
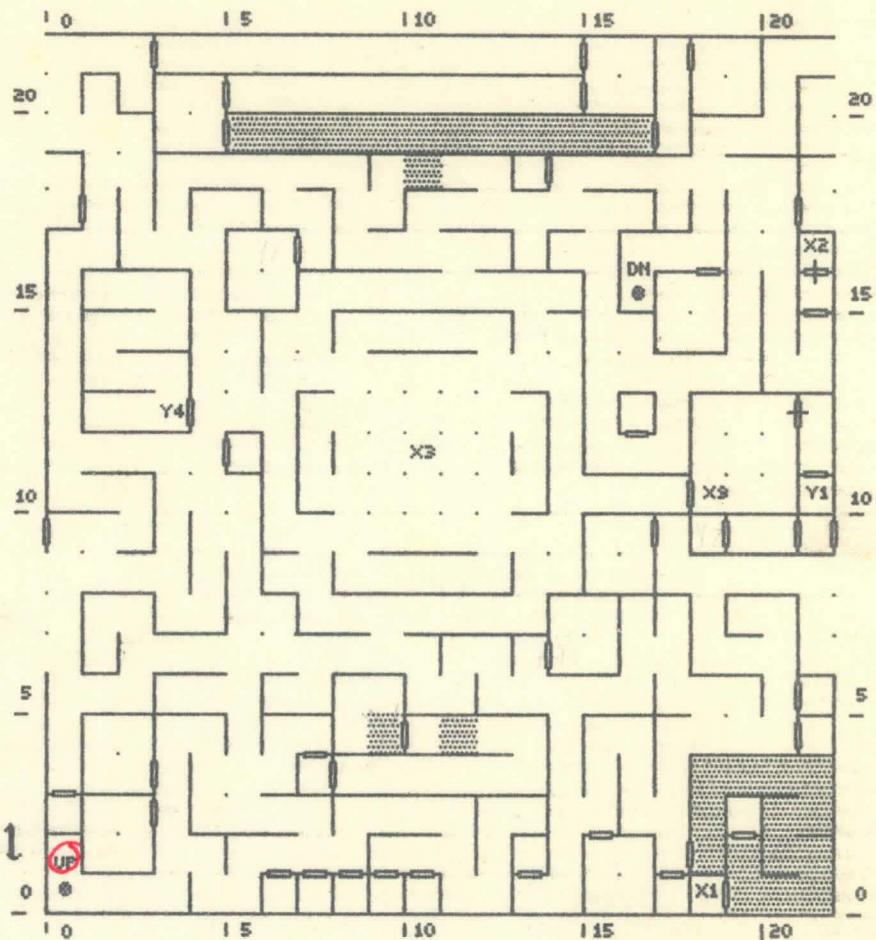
- X1 - "15 DOORS EAST & THOU ART THERE, ON SOULS THEY FEAST IN THE DARK ONE'S LAIR"
- X2 - "THE ANCIENT WITCH KING YET LIVES"
- X3 - CONFUSES DIRECTION
- X4 - CHAMBERS OF BASHAM KAVILOR
- X5 - "TO THE TONER FLY A MAD ONE DIE ONCE LOST THE EYE"
- X6 - A MOVABLE "SPECIAL" THAT CONFUSES DIRECTION
- X7 - HIGH PRIEST'S TREASURE CHAMBER
- X8 - STASIS CHAMBER - NO EXIT EXCEPT TELEPORT - SOUL SUCKER
- X9 - BURIAL PREPARATION CHAMBER
- Y1 - 45 ZOMBIES
- Y2 - REMOVES SPELLS EXCEPT LIGHT
- Y3 - 49 NIGHTS
- Y4 - 66 SKELETONS
- ▨ - DARKNESS / SMOKE
- ⊕ - HIDDEN DOOR - ARROW = ONE-WAY
- ⊙ - STAIRS

LEVEL 1

NOTE: THE TELEPORT SPELL DOES NOT WORK IN THE CATACOMBS EXCEPT AT X8.



LEVEL 2



WARD'S TALE

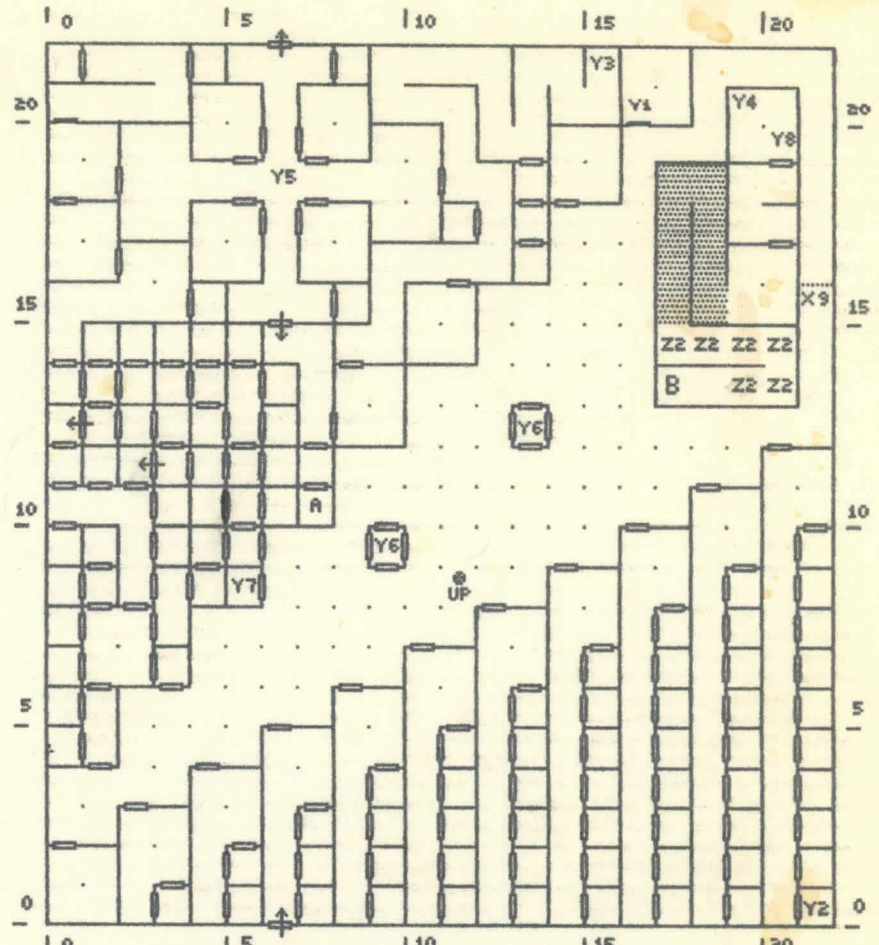


Legend

- X9 - ENDLESS CORRIDOR WHEN GOING NORTH
- PASS THRU WHEN GOING SOUTH
- Y1 - "SEEK THE MAD ONE'S STONEY
SELF IN HARKYH'S DOMAIN."
- Y2 - ZAPS PARTY TO A
- Y3 - ZAPS PARTY TO B
- Y4 - ZAPS PARTY TO STAIRS (UP)
- Y5 - CONFUSES DIRECTION
- Y6 - TELEPORT CHAMBER (ONLY PLACE
WHERE TELEPORT WORKS)
- Y7 - 99 SKELETONS
- Y8 - WITCH KING AILDREK (SPECTRE)
YOU FIND AN EYE
- Y9 - 8 WRAITHS
- Z1 - 66 ZOMBIES
- Z2 - REMOVES SPELLS
- Z3 - 7 WRAITHS
- Z4 - 36 GHOULS
- ███ - DARKNESS/SMOKE
- ⊕ - HIDDEN DOOR
- ⊙ - STAIRS

NOTE: THE TELEPORT SPELL DOES
NOT WORK IN THE CATACOMBS
EXCEPT AT SPECIAL SPOTS

LEVEL 3



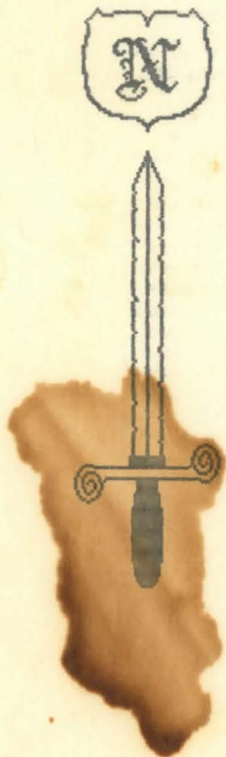
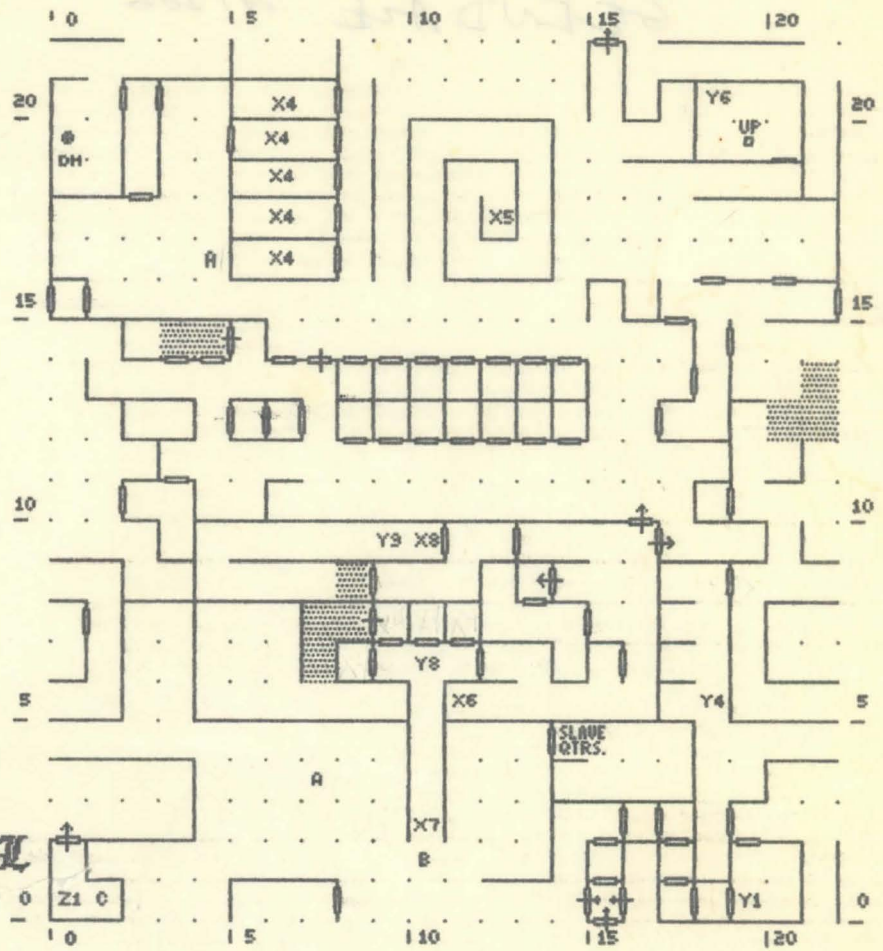
CATACOMBS

BARB'S TALE HARRIN'S CASTLE

LEGEND

- X1 - REMOVES SPELLS, EXCEPT FIRE
 - X2 - ZAPS TO X3
 - X3 - CAUSES HITS TO ALL CHARACTERS
 - X4 - CAUSES HITS TO ALL CHARACTERS
 - X5 - ZAPS PARTY TO 'A'
 - X6 - ZAPS PARTY TO 'B'
 - X7 - REMOVES SPELLS
 - X8 - ZAPS PARTY TO 'C'
 - X9 - THRONE - ONLY BARB CAN SIT
 - Y1 - THE STONE MOUTH ASKS THE RIDDLE:
"PAST WARRIORS FOUGHT BY MEN LONG DEAD
AND TREASURES LOST ON BLOODIED FIELDS.
THE ONE GOD LIFTS HIS THORN-CROWNED HEAD
AND LAYS A STRENGTH ON FRIENDLY..."
 - Y2 - REPLENISHES SPELL POINTS SLOWLY
 - Y3 - ROYAL BEDROOM
 - Y4 - ZAPS PARTY TO 'A'
 - Y5 - 1 STONE GOLEM
 - Y6 - SOMETHING IS NOT QUITE RIGHT HERE
 - Y7 - YOU FIND A CRYSTAL SWORD
 - Y8 - AIR NEARBY HAS A FOUL REEK
 - Y9 - MASTER SORCERER'S RIDDLE:
ONCE A MAN ALIVE, NOW LIVING DEATH
IT DRINKETH BLOOD, IT STEALETH BREATH
ANSWER: VAMPIRE
 - Z1 - YOU FIND A SILVER SQUARE
- - DARKNESS / SMOKE
 - ⊕ - HIDDEN DOOR (ARROW=ONE WAY)
 - - PORTALS
 - ⊙ - STAIRS

LEVEL 2



LEVEL 1

