

FORGOTTEN REALMS

# NEVERWINTER NIGHTS™

# SHADOWS of UNDRENTIDE™

**EXPANSION PACK**

Requires the original *Neverwinter Nights™* to play



DEVELOPED BY  
**BIOWARE**  
CORP

**AT&T**  
ATARI

# TABLE OF CONTENTS

Introduction . . . . .	3
What's Included in this Manual . . . . .	3
The Story So Far . . . . .	3
<b>The Game . . . . .</b>	<b>4</b>
The ReadMe File . . . . .	4
Setup and Installation . . . . .	4
System Requirements . . . . .	5
Saving and Loading . . . . .	5
<b>Places and People . . . . .</b>	<b>6</b>
Cities and Towns . . . . .	6
The Silver Marches . . . . .	6
Hilltop . . . . .	6
Anauroch . . . . .	6
The Floating Cities of Netheril . . . . .	7
Characters in the Tale . . . . .	8
Master Drogan . . . . .	8
Katriana Dorovnia . . . . .	8
Adventurers . . . . .	9
Dorna Trapspringer . . . . .	9
Xanos Messarmos . . . . .	9
Deekin Scalesinger . . . . .	9
<b>Foes . . . . .</b>	<b>10</b>
Medusa . . . . .	10
Basilisk . . . . .	10
Gorgon . . . . .	11
Wyrmlings . . . . .	11
Faerie Dragons and Pseudodragons . . . . .	11
Sphinx . . . . .	12
Formians . . . . .	12
Stingers . . . . .	12

CD KEYCODE:  
RQ9MW-AKJAN-KWJDP-G6E3T-MLEDK-FP9KV-3QEAL



Player's Handbook .....	13
Prestige Classes .....	13
Arcane Archer .....	13
Assassin .....	14
Blackguard .....	15
Harper Scout .....	16
Shadowdancer .....	18
Alignment Shift .....	20
New Skills .....	23
New Feats .....	24
New Spells .....	31
Weapons .....	39
Grenade-like Weapons .....	39
Toolset Additions .....	40
Spells Appendix .....	42
Credits .....	44
Atari Web Sites .....	47
Technical Support .....	48
End-User License Agreement .....	50
Index .....	53

## INTRODUCTION

**N**everwinter Nights™ continues the epic role-playing game revolution with the *Shadows of Undrentide* expansion pack, featuring all-new prestige classes, monsters, weapons, feats, skills and spells! Engage in a brand new single-player adventure with more than 20 hours of gameplay. Dungeon masters can create richer experiences with three new tilesets, plus enhancements that bring even more depth to the originals. Construct the plot, set projectile traps and develop non-player character conversations with new Neverwinter Aurora Toolset Wizards.

### What's Included in this Manual

**T**his manual calls out enhancements to the rules, and provides descriptions of the new features, including skills, feats, spells and weapons. Where necessary, please refer to the original *Neverwinter Nights* game manual or the *Dungeons & Dragons® Player's Handbook*, *Dungeon Master's Guide* or the *Monster Manual*, which are available at book and game stores.

### The Story So Far

**D**eep within the frozen wilds of the Silver Marches, nestled on this frontier and far from the reach of the City of Neverwinter, resides the revered Master Drogan. Sharpened by decades of quests and exploits of lore, this dwarven mage imparts his wisdom to those students willing to challenge themselves.

The riddles of wisdom and tales of fierce monsters grow with every lesson, seemingly embellished by the anticipation of some type of initiation. What kernel of wisdom will you derive from the next enigmatic lesson? What daring adventures will you begin with your next quest?

# THE GAME

## The ReadMe File

The *Neverwinter Nights Shadows of Undrentide* CD-ROM game has a ReadMe file where you can view both the License Agreement and updated information about the game. We strongly encourage you to take the time to read this file in order to get the benefit of changes made after this manual went to print.

To view this file, double-click on it in the *Neverwinter Nights* directory found on your hard drive (usually C:\NeverwinterNights\NWN\docs\SoUReadMe). You can also view the ReadMe file by first clicking on the Start button on your Windows® taskbar, then on Programs, then on *Neverwinter Nights*, then on the SoUReadMe file.

## Setup and Installation

Start Windows® 98/Me/2000SP2/XP. Exit all other applications.

**Note:** You must have *Neverwinter Nights* installed on your computer in order to install and play *Shadows of Undrentide*.

Insert the *Shadows of Undrentide* CD-ROM game disc into your CD-ROM drive.

If AutoPlay is enabled, a title screen should appear. Click on the Install button. If AutoPlay is not enabled, click on the Start button on your Windows® taskbar, then on Run. Type D:\Setup and click on OK. **Note:** If your CD drive is assigned to a letter other than D, substitute that letter.

Follow the remainder of the on-screen instructions to finish installing *Shadows of Undrentide*.

After installing the game you will be offered the choice to view the ReadMe and play the game.

**Note:** As with the original product, you must insert the *Neverwinter Nights* Play Disc into your CD-ROM drive in order to play the game.

## System Requirements

Operating System:	Windows® 98/Me/2000SP2/XP
Processor:	Pentium® II 450 MHz or AMD K6-450 MHz (Pentium® III 800 MHz/Athlon 800 MHz recommended)
Memory:	128 MB RAM (256 MB recommended)
Hard Disk Space:	1.2 GB Free
CD-ROM Drive:	8X Speed
Video:	32 MB TNT2-class OpenGL 1.2-compliant video card (NVIDIA GeForce 2/ATI Radeon recommended)
Sound:	DirectX®-certified sound card*
Multiplayer:	Local area network with TCP/IP protocol or established Internet connection (56 Kbps modem or faster required)
DirectX®:	DirectX® version 8.1 or higher

\* Indicates device should be compatible with DirectX® version 8.1 or higher

## Saving and Loading

Saving and loading while playing *Shadows of Undrentide* is exactly the same as saving and loading while playing *Neverwinter Nights*.



# PLACES AND PEOPLE

## Cities and Towns

Your journeys will take you through many lands of the *Forgotten Realms*, from the Sword Coast North to the Savage Frontier. Below are listed some of the more prominent cities and areas in the game.

### The Silver Marches

The Marches is a vast region of northern wilderness more commonly called the Savage Frontier. It is home to a small number of large, well-defended cities and many smaller, but no less well-defended, towns and villages. Citizens of more “civilized” lands in the south consider it a wild land of barbarians and monsters. Those who call it home consider it a land of great promise and beauty, but even they do not deny the hazards posed by the harsh climate and countless monsters.

### Hilltop

Hilltop is one of the “Free Towns” in the Silver Marches. Recently founded by ex-soldiers from the Zhentarim armies, the towns are looked upon with suspicion by neighbors familiar with Zhent’s expansionist history. The inhabitants of the Free Towns maintain that they are happy to be rid of the yoke of Zhentarim control, and wish to make a new life for themselves. In addition to former Zhent soldiers, the Free Towns tend to attract folk who are drawn to the local “live and let live” attitude, and neighbors who don’t ask too many questions.

### Anauroch

Known as The Great Waste, this tremendous desert was the result of foul magics being leveled upon the lands of the Netheril, who dwelt above then-grassy plains in floating cities raised by magic. Now, few make it their home. Among them are the nomadic Bedine and the Zhentarim, who seek to forge a permanent trade route through the desert.

## The Floating Cities of Netheril

The mages of the ancient Netherese Empire worked spells far beyond the reach of the mages of these latter days. Perhaps chief among their creations was the mythallar, the wondrous magical device that enabled the Netherese to raise their fabled floating cities. High above Faerun, the floating cities were mighty citadels safe from virtually all enemies.

The cities were eventually brought low not by any outside force, but by the pride and folly of the Netherese archmage Karsus, who attempted to seize the power of the goddess of magic. He instead managed to shatter the mythallars, sending all the cities of Netheril plummeting to the ground.

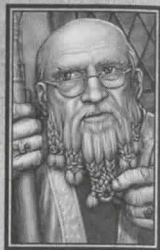
The sands of the Anauroch desert swallowed the ruins, and Netheril passed into history, then into legend. Now only the bravest of explorers and adventurers dare to seek the lost cities, for the rewards granted by magical treasures hidden within are easily matched by the dangers of long-lost magic traps and the twisted creatures that lurk in the buried chambers.



## Characters in the Tale

### Master Drogan

After a long career as adventurer and explorer, Drogan has retired and set up shop in the village of Hilltop as an instructor. He teaches lessons learned from years of close calls and narrow escapes to a group of young hopefuls who are anxious to start their own lives of adventure. Aside from his stories and lessons of adventure, Drogan speaks little of his past, though he exhibits all the hardened pragmatism typical of the northern Shield Dwarves.



### Katriana Dorovnia



One of the few non-Zhents allowed to traverse the Zhentarim's Black Road freely, Katriana is a halfling who has earned a reputation as a hard-nosed but fair bargainer. She's always looking for people who can help expand her trading company, either by dealing with it or by keeping it from harm as it travels through dangerous regions.

## Adventurers

### Dorna Trapspringer



When she heard Drogan had established a school for adventurers and was taking on apprentices in Hilltop, Dorna was one of the first to arrive and apply. She traveled nearly 200 miles alone across the wilds of the Silver Marches from her clan home in the mountains, which many would consider proof enough that she needed no instruction in survival. Still, she seems convinced that she is destined to face even greater danger, and it's unlikely that she's wrong.

### Xanos Messarmos

Born to the upper middle class of Chessenta, Xanos found his razor-sharp wit a strong counter to the barbs of his schoolmates in his youth. While no longer young, Xanos still has an acerbic nature, but now it masks his desire to fulfill the role of a true adventurer and gain renown throughout the Realms.



### Deekin Scalesinger



Deekin is a rather remarkable member of the Dripping Fang clan of kobolds. Unlike other kobolds, Deekin aspires to something "bigger" than mining, marauding and looting. He aspires to be a skald, a noble northern bard of legend. His goal is to write a heroic saga that will rival any of the classics... his chief problem is that his fellow kobolds are anything but heroic. Deekin has recently decided that he'll have to look a little further afoot if he is going to find a hero befitting his saga.



## FOES

The creatures listed below are found in the wilds and dungeons around the *Forgotten Realms*. **Note:** You can immediately see how difficult a creature is to defeat by selecting the "Examine" option from the radial menu while playing.

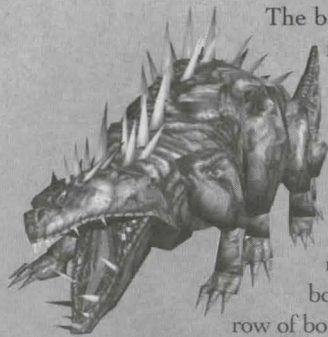
### Medusa

The medusa is a hateful, repulsive creature that turns living beings into stone with its gaze. It prizes art objects, fine jewelry, and wealth. A medusa is indistinguishable from a normal human at distances greater than 30 feet. Once the creature is clearly visible, its true nature is revealed. Its hideous face is crowned with a mass of writhing, hissing snakes instead of hair and its eyes glow a deep red. In contrast, its body is perfectly proportioned and exceptionally attractive, although scaly and earthen colored.



Medusas are found in nearly every climate. Some dwell in large cities, becoming active in the criminal underworld to gain what they desire.

### Basilisk



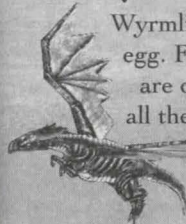
The basilisk is a reptilian monster that petrifies living creatures with a mere gaze. Fighting a basilisk requires either careful preparation or considerable good fortune. Basilisks are found in nearly every climate, and tend to build lairs in sheltered subterranean areas, such as caves and shallow burrows. A basilisk usually has a dull brown body with a yellowish underbelly. A single row of bony spines lines its back, and some specimens sport a short, curved horn atop the nose. An adult basilisk grows to about six feet long, not including its tail, which can reach an additional five to seven feet.

### Gorgon

Gorgons are bull-like creatures that guard their territory fiercely. They are fond of rocky areas, especially underground labyrinths. A typical gorgon stands over six feet tall at the shoulder and measures eight feet from snout to tail. Although built like a bull, the gorgon is covered with metallic black scales and has silver horns. Its eyes burn red, giving the impression of two hot coals set beneath its heavy brow.



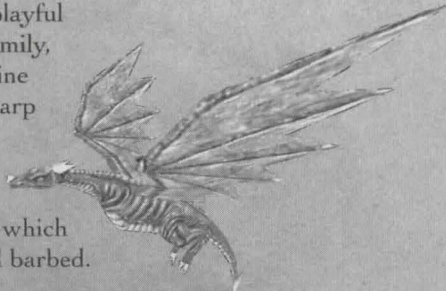
### Wyrmlings



Wyrmlings are dragons that have just hatched from the egg. From newborn to about five years old, wyrmlings are only about two to five feet long. Wyrmlings have all the abilities of their older brothers and sisters, but are far less powerful. Nevertheless, it is a fool who approaches a wyrmling without caution.

### Faerie Dragons and Pseudodragons

Pseudodragons are tiny, playful members of the dragon family, red-brown in color with fine scales, short horns and sharp teeth. While capable of delivering vicious bites, the pseudodragon's main weapon is its flexible tail, which is about two feet long and barbed.



Faerie dragons have emerald-green scales and brightly colored butterfly wings. Some faerie dragons and pseudodragons may seek humanoid companionship, and often serve as familiars to wizards.

## Sphinx

A sphinx is an enigmatic creature with great, feathery wings and the body of a lion. Often very intelligent, they constantly seek out challenges for their staggering intellects. Riddles, puzzles, and other such things delight them to no end.



## Formians



Formians are dimensional travelers that come from a plane devoted to law. Their colonies include: Workers, who make up most of a population; Taskmasters, who drive the Workers; Soldiers, who fiercely protect the colony and queen; Mymarchs, who are intelligent enough to have learned to use magic; and the Queen, who leads the whole colony.

They are ruthlessly expansionist, though not actually evil.

## Stingers

Stingers are a warlike race of scorpion-centaurs. They have a complex society that seems incomprehensible to other races. They are known for divining the future through the vibrations of the earth. Witnesses have also seen them scuttle by in strange, aggressive "races" that have no clear purpose. Both male and female stingers fight in service to their chieftain, and even small tribes will contain a powerful shaman. Stingers live in twisting colonies dug out of the sand or rock.



# PLAYER'S HANDBOOK

The *Shadows of Undrentide* is an adventure featuring all-new skills and feats with which your characters may grow, as well as five new prestige classes. For this reason, *Shadows of Undrentide* has been created as a campaign that works best starting with a new, 1st-level character. However, those who prefer to use a pre-existing character may do so.

**Note:** There are certain places in *Shadows of Undrentide* where you will not be able to rest as you could in the original game. Some dungeons or caves are not suitable for a character to lay his or her head down to recuperate, as they are damp, noisy, rocky, or too dangerous.

**Note:** In hardcore mode, petrification is permanent.

## Prestige Classes

*Shadows of Undrentide* adds a new option for character development called prestige classes. Prestige classes are like regular classes, except that they have requirements that must be met before one can attain the class. These powerful classes grant characters unique new abilities unavailable to the base classes. Some classes may require a certain number of ranks in one or more skills, others may require the ability to cast arcane or divine spells.

Each class has a range of abilities that make it substantially different from the other classes. These abilities are an integral part of your character's class, and mastering them will aid you.



### Arcane Archer

Master of the elven war bands, the arcane archer is a warrior skilled in using magic to supplement his combat prowess. Fighters, rangers, paladins and barbarians become arcane archers to add a little magic to their combat abilities. Conversely, wizards and sorcerers may adopt this prestige class to add combat capabilities to their repertoires.

- **Hit Dice:** d8
- **Proficiencies:** All simple and martial weapons, light and medium armor, and shields
- **Skill Points:** 4 + Int. modifier



## Requirements

To qualify as an arcane archer, a character must fulfill all of the following criteria:

- **Race:** Elf or half-elf
- **Base Attack Bonus:** +6
- **Feats:** Weapon Focus Longbow or Weapon Focus Shortbow, Point Blank Shot
- **Spellcasting:** Ability to cast arcane spells

## Abilities

- **Enchant Arrow:** The arcane archer is able to shoot arrows with increased precision and damage. This ability is automatically applied to all arrows fired and increases with experience: +1 at 1st level; +2 at 3rd level; +3 at 5th level; +4 at 7th level; and +5 at 9th level.
- **Imbue Arrow:** Beginning at 2nd level, the arcane archer is able to shoot a fireball arrow three times a day.
- **Seeker Arrow:** At 4th level the arcane archer can fire one arrow per day that cannot miss. At 6th level he can fire two Seeker Arrows per day.
- **Hail of Arrows:** – At 8th level and beyond, the arcane archer is able to fire an arrow at each and every target within range.
- **Arrow of Death:** This ability, gained at the 10th level, allows the arcane archer to, once per day, fire an arrow that can instantly kill an opponent.

## Assassin



The assassin is a master of dealing quick, lethal blows. Assassins often function as spies, informants, killers for hire, or agents of vengeance. The assassin's skill in a variety of dark arts allows him to carry out missions of death with shocking, terrifying precision. Rogues, monks and bards are ideal candidates for training as assassins.

Unlike the blackguard, the assassin is not evil due to devotion to an evil power, but rather due to a complete lack of morals or ethics. These ruthless and avaricious killers have but one requirement other than a predisposition for evil and a penchant for stealth. They must kill another intelligent being for no other reason than pay.

- **Hit Dice:** d6
- **Proficiencies:** simple weapons, light armor
- **Skill Points:** 4 + Int. Modifier

## Requirements

To qualify as an assassin, a character must fulfill all of the following criteria:

- **Alignment:** Any evil
- **Skills:** Hide 8 ranks, Move Silently 8 ranks

## Abilities

- **Death Attack:** This special sneak attack has a chance of paralyzing the opponent. Death Attack damage increases with experience: +1d6 at 1st level; +2d6 at 3rd level; +3d6 at 5th level; +4d6 at 7th level; and +5d6 at 9th level.
- **Uncanny Dodge:** The assassin is able to avoid and deflect incoming attacks. At 2nd level, the assassin retains his or her dexterity bonus to armor class, even if flat-footed. At 5th level, the assassin gains a +1 to Reflex saving throws. At 10th level, the assassin gains a +2 to Reflex saving throws.
- **Spells:** At 2nd level, the assassin gains the ability to cast Ghostly Visage once per day. At 5th level, the assassin gains the ability to cast Darkness once per day. At 6th level, the assassin gains the ability to cast Invisibility once per day. At 9th level, the assassin gains the ability to cast Improved Invisibility once per day.
- **Poison Resist:** The assassin's expertise with deadly toxins gives the assassin an unnatural resistance to poisons of all types. This ability improves with experience: +1 Fortitude save vs. poison at 2nd level; +2 at 4th level; +3 at 6th level; +4 at 8th level; and +5 at 10th level.

## Blackguard



A blackguard epitomizes evil. He is nothing short of a mortal fiend, a black knight with the foulest sort of reputation. A blackguard is an evil villain of the first order, equivalent in power to the righteous paladin, but devoted to the powers of darkness. No one class makes the best blackguard — all that is required is a willingness to serve the forces of darkness.



- **Hit Die:** d10
- **Proficiencies:** All simple and martial weapons, all types of armor and shields
- **Skill Points:** 2 + Int Modifier

## Requirements

To qualify as a blackguard, a character must fulfill all of the following criteria:

- **Feats:** Hide 5 ranks
- **Skills:** Cleave
- **Alignment:** Any evil
- **Base Attack Bonus:** +6

## Abilities

- **Smite Good:** Beginning at 2nd level, the blackguard adds Charisma modifier to attack roll vs. good.
- **Dark Blessing:** Beginning at 2nd level, the blackguard adds Charisma modifier to saving throws.
- **Turn Undead:** Beginning at 3rd level, the blackguard can make undead flee.
- **Create Undead:** Beginning at 3rd level, the blackguard can summon an undead ally.
- **Summon Fiend:** Beginning at 5th level, the blackguard can summon a fiendish ally.
- **Sneak Attack:** The blackguard gets a damage bonus that increases with experience: +1d6 at 4th level; +2d6 at 7th level; and +3d6 at 10th level.
- **Spells:** At 2nd level, the blackguard gains the ability to cast Bull's Strength once per day. At 6th level, the blackguard gains the ability to cast Inflict Serious Wounds once per day. At 7th level, the blackguard gains the ability to cast Contagion once per day. At 8th level, the blackguard gains the ability to cast Inflict Critical Wounds once per day.

## Harper Scout



Harpers are members of a secret society dedicated to holding back evil, preserving knowledge, and maintaining the balance between civilization and the wild. Harpers learn arcane spells and many skills to help them in their duties of espionage, stealth and reporting information.

Many Harpers are bards, but by no means all. Ranger, rogue, sorcerer and wizard are common vocations for Harpers, as these classes tend to have versatility and mobility. All have some skill at manipulating others, a resistance to outside mental influences, acute abilities of perception, and a talent for solving problems.

Not all Harpers are members of the Harper scout prestige class, and rank within the organization does not depend upon a character's level in this or any other class. However, most of the higher-ranked Harpers have at least one level in the Harper scout prestige class.

The highest-ranked Harpers are called the High Harpers, and they are responsible for most of the long-term planning for the organization. The High Harpers are voted into their position by a secret ballot among the other High Harpers, with the criteria being experience, exceptional service, and discretion in implementing the Harpers' plans.

- **Hit Die:** d6
- **Proficiencies:** simple weapons, light armor
- **Skill Points:** 4 + Int modifier

## Requirements

To qualify to become a Harper scout, a character must fulfill all of the following criteria:

- **Feats:** Alertness, Iron Will
- **Skills:** Search 4 ranks, Persuade 8 ranks, Lore 6 ranks, Discipline 4 ranks
- **Alignment:** Any non-evil

## Abilities

- **Harper Knowledge:** Like a bard, a Harper scout has a knack for picking up odds and ends of knowledge. This ability works exactly like the bardic knowledge ability of the bard class. If a Harper scout has bard levels, the character's Harper scout levels and bard levels stack for bardic knowledge.
- **Favored Enemy:** A Harper scout selects a favored enemy just as a ranger does. Upon reaching 4th level as a Harper scout, the bonus against the Harper scout's first favored enemy increases to +2, and she gains a new favored enemy at +1.



- **Deneir's Eye:** At 2nd level, the Harper scout gains a +2 holy bonus to saving throws against traps. This is a supernatural ability.
- **Tymora's Smile:** At 3rd level, once per day, the Harper scout or a target receives a +2 saving throw bonus on all saving throws for 5 turns. This is a supernatural ability.
- **Lliira's Heart:** At 4th level, the Harper scout gains a +2 holy bonus to saving throws against mind-affecting spells. This is a supernatural ability.
- **Spells:** These spells are cast as arcane spells, so they are subject to arcane spell failure if the Harper scout is wearing armor: At 2nd level, the Harper scout gains the ability to cast the spell Sleep once per day. At 3rd level, the Harper scout gains the ability to cast the spell Cat's Grace once per day. At 4th level, the Harper scout gains the ability to cast Eagle's Splendor once per day. At 5th level, the Harper scout gains the ability to cast the spell Invisibility once per day.
- **Craft Harper Item:** At 5th level, the Harper scout gains the ability to create two types of potions. The Harper scout can create one potion per day, either a Cat's Grace potion or Eagle's Splendor. To create either potion, the Harper scout must spend 60 gold and 5 experience points. These potions allow a Harper scout to better support her agents and allies.

## Shadowdancer



Operating in the border between light and darkness, shadowdancers are nimble artists of deception. They are mysterious and unknown, never completely trusted but always inducing wonder when met.

Rogues, bards and monks make excellent shadowdancers, but fighters, barbarians, rangers and paladins also find that shadowdancer abilities allow them to strike at their opponents with surprise and skill. Wizard, sorcerer, cleric and druid shadowdancers employ the defensive capabilities inherent in the prestige class to allow them to cast their spells from safety and move away quickly. Despite their link with shadows and trickery, shadowdancers are as often good as evil. They may use their incredible abilities as they wish.

Shadowdancers often work in troupes, never staying in one place too long. Some use their abilities to entertain. Others operate as thieves, using their abilities to infiltrate past defenses and dupe others. All shadowdancer troupes maintain an aura of mystery among the populace, who never know whether to think well or ill of them.

- **Hit Dice:** d8
- **Proficiencies:** simple weapons, light armor
- **Skill Points:** 6 + Int modifier

## Requirements

To qualify as a shadowdancer, a character must fulfill all of the following criteria:

- **Skills:** Move Silently 8 ranks, Hide 10 ranks, Tumble 5 ranks
- **Feats:** Dodge, Mobility

## Abilities

- **Hide in Plain Sight:** The shadowdancer is able to use the Hide skill even while being observed.
- **Shadow Daze:** Once per day, the shadowdancer may inflict an illusory daze upon a target. This daze lasts for five rounds.
- **Summon Shadow:** Once per day, the shadowdancer can summon a shadow. This shadow is extremely difficult to turn and becomes more powerful as the shadowdancer gains levels.
- **Shadow Evade:** Three times per day, the shadowdancer can call upon the shadows in the area to help conceal her. The shadowdancer gains a concealment bonus, damage reduction and an AC bonus that improves with experience.

## Alignment Shift

If your character acts outside of what would be appropriate for his or her alignment, those actions can cause a shift in alignment, from good to evil, lawful to chaotic, and so on. The severity of the shift varies with the deed, and can sometimes have extreme consequences. For example, if a paladin performs an overtly evil or chaotic act, which changes his or her alignment from lawful good, he or she will no longer be a paladin.

Most out-of-character actions only create slight shifts in alignment. A good character can have a bad day and threaten to rough up a shopkeeper with little consequence. If, however, that good character acts on the threat and kills the clerk, a significant alignment shift toward evil would occur.

Good-aligned characters will take a bigger alignment "hit" from performing an evil act than a neutral character. Likewise, for evil-aligned characters who perform good deeds.

## New Skills

**Note:** To receive a bonus from a skill, you must put at least one point in that skill when you level up your character.

### Appraise



The higher the character's skill, the more money that character can expect to receive when selling goods, and the less that character will have to pay when buying goods.

**Ability:** Intelligence

**Classes:** All

**Untrained:** No

**Check:** None

**Use:** Automatic in stores

### Craft Trap



The character using this skill can combine raw components to form various trap kits. Some traps require the use of new grenade-like weapons (see page 40).

**Ability:** Intelligence

**Classes:** All

**Untrained:** Yes

**Check:** The DC is determined by the type of trap being created

**Use:** Selected

Here are some of the traps you can create, and the components required to make them:

**Fire:** Alchemist's Fire Flask

**Tangle Trap:** Tanglefoot Bag

**Spike Trap:** Caltrops

**Holy Trap:** Holy Water

**Electrical Trap:** Quartz

**Gas Trap:** Choking Powder

**Frost Trap:** Coldstone

**Negative Trap:** Skeleton Knuckles

**Sonic Trap:** Thunderstone

**Acid Splash Trap:** Acid Flask



## Tumble



Characters with high tumbling are able to roll away from attacks during combat, positioning themselves safely at all times.

**Ability:** Dexterity

**Classes:** All

**Untrained:** No

**Check:** None

**Special:** Any time the character might receive an attack of opportunity for moving past enemies, the character will automatically attempt a Tumble check against a DC of 15. If successful, the attack is avoided. For every five ranks in this skill (not including Dexterity bonus) the character's AC is also improved by +1.

**Use:** Automatic

## New Feats

### Arcane Defense



Character gains a +2 bonus to saving throws versus the chosen school of magic.

**Type of Feat:** General

**Prerequisite:** Spell Focus in the chosen school

**Use:** Automatic

### Artist



Character gains a +2 bonus to Perform checks and a +2 bonus to Spot checks.

**Type of Feat:** General

**Prerequisite:** Perform skill, can only be taken at 1st level

**Use:** Automatic

### Blind Fight



This feat grants the character the ability to fight well if blinded or against invisible creatures. The character gets to roll her miss chance percentile to see if her attack actually hits. As well, invisible creatures get no bonus to hit the character in melee.

**Type of Feat:** General

**Prerequisite:** None

**Use:** Automatic

### Blooded



Character gains a +2 bonus to initiative and a +2 bonus to Spot checks.

**Type of Feat:** General

**Prerequisite:** Can only be taken at 1st level

**Use:** Automatic

## Bullheaded



Character gains a +2 bonus to resist Taunts and a +1 bonus to Will saving throws.

**Type of Feat:** General

**Prerequisite:** Can only be taken at 1st level

**Use:** Automatic

## Circle Kick



If the character succeeds in hitting an opponent with an unarmed attack, that character gets an additional free attack against another, nearby enemy. There is a maximum of one free attack per round.

**Type of Feat:** General

**Prerequisite:** Base attack bonus +3, Dexterity 15+, Improved Unarmed Strike.

**Use:** Automatic

## Courteous Magocracy



Character gains a +2 bonus to Lore checks and Spellcraft checks.

**Type of Feat:** General

**Prerequisite:** Can only be taken at 1st level

**Use:** Automatic

## Dirty Fighting



The character knows brutal and effective fighting tactics. By sacrificing all other attacks during the round, the character can elect to perform a Dirty Fighting move, which will deal an extra 1d4 points of damage. This mode cannot be used with the Power Attack feat.

**Type of Feat:** General

**Prerequisite:** Base attack bonus +2.

**Use:** Automatic

## Divine Might



Up to three times per day, the character may add his Charisma bonus to all weapon damage for a number of rounds equal to the Charisma bonus.

**Type of Feat:** General

**Prerequisite:** Turn Undead, Charisma 13+, Strength 13+, Power Attack

**Use:** Selected

## Divine Shield



Up to three times per day, the character may add his Charisma bonus to his armor class for a number of rounds equal to the Charisma bonus.

**Type of Feat:** General

**Prerequisite:** Turn Undead, Charisma 13+, Strength 13+, Power Attack

**Use:** Selected

## Expertise



A character with this feat can make defensive attacks, gaining a +5 bonus to AC but receiving a -5 penalty to attack rolls.

**Type of Feat:** General

**Prerequisite:** Intelligence 13+

**Required for:** Improved Expertise

**Use:** Combat mode

## Extra Music



The character may use bard song four extra times per day.

**Type of Feat:** General

**Prerequisite:** Bardic Music

**Use:** Automatic



## Extra Stunning Attacks



The character gains 3 extra stunning attacks per day.

**Type of Feat:** General

**Prerequisite:** Base attack bonus +2, Stunning Fist.

**Use:** Automatic.

## Great Cleave



Same as the Cleave feat, except that there is no limit to the number of additional attacks that the character may make after killing one opponent.

**Type of Feat:** General

**Prerequisite:** Strength 13+, Power Attack, Cleave, base attack bonus +4 or higher

**Use:** Automatic

## Greater Spell Focus



A character becomes even more adept with spells of a particular school of magic. The character gains a +4 bonus to the spell save DC for all spells of the chosen school.

**Type of Feat:** General

**Prerequisite:** Spell Focus (of the appropriate school)

**Use:** Automatic. This feat may be selected multiple times, but the effects do not stack. It applies to a different school of magic in each case. This overlaps (does not stack with) the bonus from Spell Focus.

## Greater Spell Penetration



A +4 bonus to caster level checks is granted to the character, when trying to beat a creature's spell resistance.

**Type of Feat:** General

**Prerequisite:** Spell Penetration

**Use:** Automatic. This overlaps (does not stack with) the bonus from Spell Penetration.

## Improved Expertise



A character with this feat can make defensive attacks, gaining a +10 bonus to AC but receiving a -10 penalty to attack rolls.

**Type of Feat:** General

**Prerequisite:** Intelligence 13+, Expertise

**Use:** Combat mode

## Improved Initiative



The character gains a +4 bonus to initiative.

**Type of Feat:** General

**Prerequisite:** None

**Use:** Automatic

## Lingering Song



The effects of the bard's songs will last an additional five rounds.

**Type of Feat:** General

**Prerequisite:** Bardic Music

**Use:** Automatic

## Luck of Heroes



Character gains a +1 bonus to all saving throws.

**Type of Feat:** General

**Prerequisite:** Can only be taken at 1st level

**Use:** Automatic

## Rapid Reload



The character is able to reload so quickly that he gets the same number of attacks with any crossbow as he would get if he was using a normal bow.

**Type of Feat:** General

**Prerequisite:** Base attack bonus +2

**Use:** Automatic

## Resist Disease



Character gains a +4 bonus to Fortitude saving throws to resist the effects of disease.

**Type of Feat:** General

**Prerequisite:** None

**Use:** Automatic

## Resist Poison



Character gains a +4 bonus to Fortitude saving throws against poison.

**Type of Feat:** General

**Prerequisite:** None

**Use:** Automatic

## Resistance to Energy



Character gains +5 resistance against the chosen type of energy (first five points of damage of this type of energy is ignored).

**Type of Feat:** General

**Prerequisite:** Base Fortitude save bonus +8

**Use:** Automatic

## Silver Palm



Character gains a +2 bonus to Appraise and Persuade checks.

**Type of Feat:** General

**Prerequisite:** Can only be taken at 1st level

**Use:** Automatic

## Snake Blood



Character gains a +2 bonus to Fortitude saving throws against poison and a +1 reflex saving throw bonus to all saves.

**Type of Feat:** General

**Prerequisite:** Can only be taken at 1st level

**Use:** Automatic

## Spring Attack



Enemies do not get attacks of opportunity against the character when the character is moving around in combat.

**Type of Feat:** General

**Prerequisite:** Dexterity 13+, Dodge, Mobility, base attack bonus +4 or higher

**Use:** Automatic

## Stealthy



Character gains a +2 bonus to Hide and Move Silently checks.

**Type of Feat:** General

**Prerequisite:** None

**Use:** Automatic

## Strong Soul



Character gains a +1 bonus to Fortitude and Will saving throws, as well as +1 bonus to any saving throw versus Death magic.

**Type of Feat:** General

**Prerequisite:** Can only be taken at 1st level

**Use:** Automatic

## Thug



Character gains a +2 bonus on Initiative checks and a +2 bonus on Persuade checks.

**Type of Feat:** General

**Prerequisite:** Can only be taken at 1st level

**Use:** Automatic

## Zen Archery



Wisdom guides the character's ranged attacks, letting her use her Wisdom modifier instead of her Dexterity when firing ranged weapons.

**Type of Feat:** General

**Prerequisite:** Base attack Bonus +3, Wisdom 13+

**Use:** Automatic



## New Spells

Below is a quick summary of the new spells, grouped by class and level. Full descriptions appear in the game.

### Bard

#### 0-Level

**Flare:** A burst of hot light is fired from the caster to one target, making it suffer a -1 penalty to attack rolls.

#### 1st-Level

**Balagarn's Iron Horn:** The caster creates a deep, resonant vibration that shakes all creatures in the area of effect from their feet if they fail a strength check (as if the caster had a strength of 20). Every creature that falls will be knocked down for one round.

**Amplify:** Decreases the DC of hearing sounds in the caster's area by 20.

#### 3rd-Level

**Wounding Whispers:** The caster is surrounded with whispers that injure any creature that hits the caster for 1d6 +1 per level points of sonic damage.

#### 6th-Level

**Dirge:** The caster's song draws the energies of death and destruction. Any enemies in the area of effect suffer 2 points of Strength and Dexterity ability score damage each round.

### Cleric

#### 0-Level

**Inflict Minor Wounds:** If the caster succeeds in striking an opponent with a touch attack, the target suffers 1 point of damage. Inflict spells have a reverse effect when used on undead, causing the targeted undead to take an amount of healing equal to what the spell normally damages.

#### 1st-Level

**Bane:** The caster's enemies are filled with fear and doubt. They suffer a -1 penalty on their attack rolls and a -1 penalty on saving throws against fear.

**Inflict Light Wounds:** If the caster succeeds in striking an opponent with a touch attack, the target suffers 1d8 points of damage, +1 point per caster level to a maximum of +5. Inflict spells have a reverse effect when used on undead, causing the targeted undead to take an amount of healing equal to what the spell normally damages.

**Divine Favor:** The caster gains a +1 bonus to attack and weapon damage rolls for every three caster levels (at least +1, to a maximum of +5).

**Endure Elements:** The target creature gains damage resistance 10/- against all elemental forms of damage. The spell ends after absorbing 20 points of damage from any single elemental type.

**Shield of Faith:** The target gains a +2 deflection bonus to their armor class, with an additional +1 bonus for every six levels of the caster (maximum of +5).

**Entropic Shield:** A magical field appears around the caster, granting the caster a 20 percent miss chance against all ranged attacks.

#### 2nd-Level

**Inflict Moderate Wounds:** If the caster succeeds in striking an opponent with a touch attack, the target suffers 2d8 points of damage, +1 point per caster level to a maximum of +10. Inflict spells have a reverse effect when used on undead, causing the targeted undead to take an amount of healing equal to what the spell normally damages.

#### 3rd-Level

**Inflict Serious Wounds:** If the caster succeeds in striking an opponent with a touch attack, the target suffers 3d8 points of damage, +1 point per caster level to a maximum of +15. Inflict spells have a reverse effect when used on undead, causing the targeted undead to take an amount of healing equal to what the spell normally damages.

**Continual Flame:** This creates a magical flame that burns as bright as a torch until dispelled.

#### 4th-Level

**Inflict Critical Wounds:** If the caster succeeds in striking an opponent with a touch attack, the target suffers 4d8 points of damage, +1 point per caster level to a maximum of +20. Inflict spells have a reverse effect when used on undead, causing the targeted undead to take an amount of healing equal to what the spell normally damages.

## 5th-Level

**Circle of Doom:** All enemies within the area of effect are struck with negative energy that causes 1d8 points of damage, +1 point per caster level. Negative energy spells have a reverse effect on the undead, healing them instead of harming them.

## 6th-Level

**Planar Ally:** An Outsider is summoned to assist the caster. The type of Outsider varies with the caster's alignment.

**Banishment:** The caster is able to cause all summoned creatures, familiars, animal companions and Outsiders in the area of effect to be destroyed. A number of creatures equal to twice the caster's level in HD can be banished.

**Greater Sanctuary:** The caster becomes ethereal. No other creature can detect the caster. Attacking or performing a hostile action will dispel Greater Sanctuary.

## 8th-Level

**Earthquake:** The caster causes a massive earthquake around himself, causing 1d6 points of damage per caster level (to a maximum of 10d6) to all creatures in the area of effect. The caster is not affected by the earthquake.

## 9th-Level

**Undeath's Eternal Foe:** All allies in the area of effect will receive the following bonuses: immunity to negative damage, immunity to level/energy drain, immunity to ability score decreases, immunity to poisons and immunity to diseases.

## Druid

### 0-Level

**Flare:** A burst of hot light is fired from the caster to one target, making it suffer a -1 penalty to attack rolls.

### 1st-Level

**Magic Fang:** This spell strengthens the caster's animal companion, giving it +1 to hit and +1 to damage.

**Camouflage:** The caster's coloring changes to match the surroundings, gaining a +10 competence bonus to any Hide checks.

## 2nd-Level

**One With the Land:** The caster forges a strong link with nature, gaining a +4 competence bonus to Animal Empathy, Hide, Move Silently and Set Trap skills.

**Blood Frenzy:** The caster enters a rage similar to that of a Barbarian. The caster gains a +2 bonus to Strength and Constitution and a +1 bonus to Will saves, while suffering a -1 penalty to AC.

## 3rd-Level

**Greater Magic Fang:** This spell strengthens the caster's animal companion, giving it +1 to hit and +1 to damage for every three levels of the caster (maximum of +5).

**Spike Growth:** Covers the terrain with small spikes. Any creature suffers 1d4 points of damage each round that they remain within the afflicted area. These spikes can damage the victim's legs, so that even once they are free of the spike growth, their movement rate is slowed for a day.

**Quillfire:** The caster throws poisonous quills at a target, doing 1d8 points of damage (+1 per 2 levels of the caster, to a maximum of +5), plus inflicting Scorpion Venom on the target.

## 4th-Level

**Mass Camouflage:** All allies in the area of effect gain a +10 bonus to their Hide skill.

## 5th-Level

**Owl's Insight:** The target gains an enhancement bonus to Wisdom equal to half the caster's level.

**Inferno:** The caster causes a target to ignite into flame. Each round, the target will suffer 2d6 points of fire damage.



## 6th-Level

**Drown:** The caster creates water in the lungs of a target creature. Any target failing its saving throw will take 90 percent of its HP in damage. Golems and other nonliving creatures cannot be drowned.

## 8th-Level

**Sunburst:** The caster directs a brilliant explosion that causes 1d6 points of damage per caster level to all undead creatures, to a maximum of 25d6 (6d6 points of damage to creatures that are not undead). Vampires are destroyed instantly if they fail a Reflex saving throw. All enemies in the area of effect must also make a successful Reflex saving throw or be blinded permanently (the blindness can only be magically removed).

**Bombardment:** Rocks fall from the sky, causing 1d8 points of damage per caster level (max 10d8) to all enemies in the area.

## 9th-Level

**Earthquake:** The caster causes a massive earthquake around himself, causing 1d6 points of damage per caster level (to a maximum of 10d6) to all creatures in the area of effect. The caster is not affected by the earthquake.

## Paladin

### 1st-Level

**Endure Elements:** The target creature gains damage resistance 10/— against all elemental forms of damage. The spell ends after absorbing 20 points of damage from any single elemental type.

**Divine Favor:** The caster gains a +1 bonus to attack and weapon damage rolls for every three caster levels (at least +1, to a maximum of +5).

### 2nd-Level

**Aura of Glory:** The caster channels divine power to gain a +4 Charisma bonus. All allies near the caster gain a +4 bonus to their saving throws vs. fear.

## Ranger

### 1st-Level

**Magic Fang:** This spell strengthens the caster's animal companion, giving it +1 to hit and +1 to damage.

**Camouflage:** The caster's coloring changes to match the surroundings, gaining a +10 competence bonus to any Hide checks.

### 2nd-Level

**One With the Land:** The caster forges a strong link with nature, gaining a +4 competence bonus to Animal Empathy, Hide, Move Silently and Set Trap skills.

### 3rd-Level

**Greater Magic Fang:** This spell strengthens the caster's animal companion, giving it +1 to hit and +1 to damage for every three levels of the caster (maximum of +5).

### 4th-Level

**Mass Camouflage:** All allies in the area of effect gain a +10 bonus to their Hide skills.

## Sorcerer/Wizard Spells

### 0-Level

**Flare:** A burst of hot light is fired from the caster to one target, making it suffer a -1 penalty to attack rolls.

**Acid Splash:** The caster fires a small orb of acid at the target for 1d3 points of acid damage.

**Electric Jolt:** The caster does 1d3 points of electrical damage to a target.

### 1st-Level

**Shield:** The caster gains a +4 bonus to AC. As well, the caster is immune to the spell Magic Missile for the duration of the shield.

**True Strike:** Through magical intuition, the caster gains a +20 bonus to attack rolls.

**Expeditious Retreat:** The caster becomes 150% faster than their normal movement rate, allowing them to flee from dangerous encounters. This spell has no effect if the caster is already hasted.

## 2nd-Level

**Tasha's Hideous Laughter:** If the target fails his or her saving throw, the target will begin laughing hysterically, and will be unable to defend themselves until the spell wears off. A creature whose racial type is different from the caster gains a +4 bonus on its saving throw, because humor doesn't "translate" well.

**Continual Flame:** This creates a magical flame that burns like a torch until dispelled.

**Balagarn's Iron Horn:** The caster creates a deep, resonant vibration that shakes all creatures in the area of effect from their feet if they fail a strength check (as if the caster had a strength of 20). Every creature that falls will be knocked down for one round.

## 3rd-Level

**Gust of Wind:** This spell creates a blast of air that knocks down any creatures failing their saving throws. It is also powerful enough to disperse any area of effect effects (such as cloudkill) that are in the path of the wind gust.

**Displacement:** The target gains 50% concealment, through the caster's ability to emulate the natural abilities of the displacer beast.

## 4th-Level

**Isaac's Lesser Missile Storm:** A number of energy missiles (one per caster level to a maximum of 10) appear and randomly target and hit any hostile creature in the area of effect. If there are more creatures than missiles, only the closest targets will be damaged. If there are more missiles than creatures, one of the targets will be hit with multiple missiles. Each missile does 1d6 points of damage.

## 5th-Level

**Bigby's Interposing Hand:** A giant hand appears over the target, making it difficult for him to attack. He receives a -10 penalty to all attack rolls for the duration of the spell.

**Firebrand:** Masses of flame (one per caster level) appear and randomly target and hit any hostile creature in the area of effect. If there are more creatures than balls of flame, only the closest targets will be damaged. If there are more balls of flame than creatures, the excess balls of flame disappear. Each ball of flame explodes for 1d6 points of damage per caster level (to a maximum of 15d6).

## 6th-Level

**Bigby's Forceful Hand:** A giant hand appears and attempts to stomp and knock down one target. The hand gains a +14 bonus on the strength check.

**Isaac's Greater Missile Storm:** A number of energy missiles (one per caster level to a maximum of 20) appear and randomly target and hit any hostile creature in the area of effect. If there are more creatures than missiles, only the closest targets will be damaged. If there are more missiles than creatures, one of the targets will be hit with multiple missiles. Each missile does 3d6 points of damage.

## 7th-Level

**Bigby's Grasping Hand:** A giant hand appears and attacks the target. If the hand hits and succeeds in a grapple check, the opponent is held for the duration of the spell.

**Banishment:** The caster is able to cause all summoned creatures, familiars, animal companions and Outsiders in the area of effect to be destroyed. A number of creatures equal to twice the caster's level in HD can be banished.

## 8th-Level

**Bigby's Clenched Fist:** A giant hand appears and attacks the target, once each round for the duration of the spell. Each hit causes 1d8+11 points of damage to the target and if they fail their saving throw they are stunned for that round as well.



**Sunburst:** The caster directs a brilliant explosion that causes 1d6 points of damage per caster level to all undead creatures, to a maximum of 25d6 (6d6 points of damage to creatures that are not undead). Vampires are destroyed instantly if they fail a Reflex saving throw. All enemies in the area of effect must also make a successful Reflex saving throw or be blinded permanently (the blindness can only be magically removed).

**Greater Sanctuary:** The caster becomes ethereal. No other creature can detect the caster. Attacking or performing a hostile action will dispel Greater Sanctuary.

## 9th-Level

**Bigby's Crushing Hand:** A giant hand appears and attacks the target. If it hits and succeeds in a grapple check, the target is held fast for the duration of the spell and suffers 2d6+12 points of damage each round.

## Weapons

There are several new weapons with varying qualities that you will come across during your adventures.

### Grenade-like Weapons



**Acid Flask:** Flasks of acid, most often used by alchemists and engravers, can be useful weapons for an adventurer, particularly when faced with creatures that may be resistant to other attacks.



**Alchemist's Fire Flask:** These flasks contain a volatile mixture that bursts into flame upon contact with air.



**Caltrops:** Caltrops are small pyramid-shaped spikes designed so that no matter which way they fall, a sharp spike is always pointing up. They are often used to slow or hobble pursuit.



**Choking Powder:** Choking powder is a mix of irritating peppers and natural herbs that can temporarily incapacitate a target.



**Holy Water Flask:** Flasks of water blessed by a cleric of a good deity are valuable weapons against the undead.



**Tanglefoot Bag:** Tanglefoot bags are packed with stringy, sticky strands that burst from the bag on impact to snare a target.



**Thunderstone:** Thunderstones are multi-sided rocks coated with an alchemical formula that detonate with a deafening boom on contact with a hard surface.

## Toolset Additions

In addition to new single-player adventure, *The Shadows of Undrentide* contains new content that you can use to create your own adventures.

### Tilesets

Three new tilesets have been added to the game:



**Desert:** A wind-swept barren waste, suitable for the Anauroch or any other desert land.

**Ruins:** The decaying ruins of a once-great city, including buildings, streets and plazas.



**Rural Winter:** A snow-covered version of the rural tileset for use in the frigid north.

## Aurora Toolset — New Wizards & Features

The Toolset also contains new wizards and features:

**Plot Wizard:** This wizard helps create plots to use in a module or to share among other module creators. Input the cast of characters, the props used and the basic story in a point-by-point format, and the wizard will create all scripts and journal entries automatically. The plot can then be further customized using the toolset to create a truly immersive story.

**Store Setup Wizard:** This wizard makes setting up stores easy. Input simple data and the wizard does the rest.

**Waypoint Walking:** Setting up a path for a creature to walk has been streamlined. Simply select the creature and point out where it should walk.

**Exporting and Importing:** You can export multiple data types at once. You can also now make all the custom data in your module into one ERF file for sharing across modules.



# SPELLS APPENDIX

	<i>Acid Splash</i>		<i>Camouflage</i>
	<i>Amplify</i>		<i>Circle of Doom</i>
	<i>Aura of Glory</i>		<i>Continual Flame</i>
	<i>Balagarn's Iron Horn</i>		<i>Dirge</i>
	<i>Bane</i>		<i>Displacement</i>
	<i>Banishment</i>		<i>Divine Favor</i>
	<i>Bigby's Clenched Fist</i>		<i>Drown</i>
	<i>Bigby's Crushing Hand</i>		<i>Earthquake</i>
	<i>Bigby's Forceful Hand</i>		<i>Electric Jolt</i>
	<i>Bigby's Grasping Hand</i>		<i>Endure Elements</i>
	<i>Bigby's Interposing Hand</i>		<i>Entropic Shield</i>
	<i>Blood Frenzy</i>		<i>Etherealness</i>
	<i>Bombardment</i>		<i>Expeditious Retreat</i>

	<i>Firebrand</i>		<i>Mass Camouflage</i>
	<i>Flare</i>		<i>One With the Land</i>
	<i>Greater Magic Fang</i>		<i>Owl's Insight</i>
	<i>Gust of Wind</i>		<i>Planar Ally</i>
	<i>Inferno</i>		<i>Quillfire</i>
	<i>Inflict Critical Wounds</i>		<i>Shield</i>
	<i>Inflict Light Wounds</i>		<i>Shield of Faith</i>
	<i>Inflict Minor Wounds</i>		<i>Spike Growth</i>
	<i>Inflict Moderate Wounds</i>		<i>Sunburst</i>
	<i>Inflict Serious Wounds</i>		<i>Tasba's Hideous Laughter</i>
	<i>Isaac's Greater Missile Storm</i>		<i>True Strike</i>
	<i>Isaac's Lesser Missile Storm</i>		<i>Undeath's Eternal Foe</i>
	<i>Magic Fang</i>		<i>Wounding Whispers</i>

# CREDITS

## BioWare

### Original Core Game Design

Trent Oster  
Scott Greig  
Mark Brockington  
James Ohlen  
Tobyn Manthorpe  
Marc Holmes  
Don Moar  
Brent Knowles  
Rob Bartel

### Art

Sung Kim  
*Art Director*  
Jono Lee  
Alex Scott  
Nolan Cunningham  
Mike Leonard  
*Artists*

David Chan  
Steven Sim  
*Audio*

Brent Knowles  
Lead Designer  
David Gaider  
Lead Writer  
Rob Bartel  
Yaron Jakobs  
Keith Warner  
Dan Whiteside  
*Designers*

Andrew Nobbs  
*Data Entry*

### Programming

Noel Borstad  
*Lead Programmer*  
Neil Flynn  
*Lead Tools Programmer*

Ross Gardner  
Paul Roffel  
Janice Thoms  
Andrew Gardner  
Craig Welburn  
Mark Brockington  
Michael Devine  
Howard Chung  
Brenon Holmes

Jason Knipe  
Scott Greig  
Dan Morris  
Don Yakielashak  
Rob Boyd  
*Programming*

Sydney Tang  
Owen Borstad  
*Tools Programming*

Trent Oster  
*Project Director / Producer*

Darcy Pajak  
Keith Soleski  
*Assistant Producer*

Ray Muzyka  
Greg Zeschuk  
*Co-Executive Producers / Joint CEO's of  
BioWare*

Scott McLaughlan  
Brad Greig  
Teresa Cotesta  
Tom Ohle  
*Marketing*

Todd Grenier  
*Promotional Art*

### Web Team / Live Team

Derek French  
*Associate Producer*  
Jay Watamaniuk  
*Community Manager*

Dave McGruther  
*Client Care Specialist*

Craig Welburn  
Andrew Gardner  
*Programmers*

Robin Mayne  
Duleepa "Dups" Wijayawardhana  
Jeff Marvin  
*Web Team*

### Quality Assurance

Jonathan Epp  
*Q.A. Lead*

Stanley Woo  
Iain Stevens-Guille  
Bruce Venne  
*Quality Assurance*

### Administration

Richard Iwaniuck  
Theresa Baxter  
Jo-Marie Langkow  
Mark Kluchky  
Agnes Kokot Goldman  
Kelly Grainger  
Leanne Korotash  
*Administration*

Chris Zeschuk  
Nils Kuhnert  
Brett Tollefson  
Craig Miller  
Julian Karst  
*System Administration*

### FloodGate Entertainment

Rick Ernst  
*Lead Designer*  
Naomi Novik  
Nathaniel Blumburg  
Paul Wrider  
*Designers*

Bhavin Patel  
*Art Director*

Doug Wike  
Peter Calabria  
Tyler Lockett  
*Artists*

Gareth Hinds  
*Portrait Artist*

Naomi Novik  
*Technical Lead*

Craig Wike  
*Q.A. Lead*

Paul Neurath  
*Creative Director*

Kemal Amarasingham  
Simon Amarasingham  
*Music, SFX e3 Voice Direction*

Additional music courtesy of dSonic  
Cinematics courtesy of RustMonkey  
Additional Artwork courtesy of  
Cyberlore Studios

Steven Russell  
Ron Hayden  
George Ledoux  
Ray Childs  
Sam Donato  
Jerry Goodwin  
Scott Dickson  
Chris King  
Gary Levitt  
Kate Lohman  
Kim Crocker  
Sheryl Rabinowitz  
Lisa Young  
Susan Boyce  
Tracy Keller  
Jennifer Alison  
*Voice Acting*

John Weston  
*Owner / Engineer of Futura Productions  
audio studio*



## Atari, Inc.

Jean-Philippe Agait  
*Studio Senior V.P.*

Steve Ackrich  
*Vice President of Product Development*

John Hight  
*Executive Producer*

Dorian Richard  
Todd Hartwig  
*Producers*

Steve Allison  
*Vice President of Brand Marketing*

Mike Webster  
*Senior Brand Manager*

Jean Raymond  
*Director of Marketing*

Steve Martin  
*Director of Creative Services*

Elizabeth Mackney  
*Director of Editorial & Documentation Services*

Kurt Carlson  
*Documentation Specialist*

Paul Collin  
*Copywriter*

Scott Snyder  
*Voice Director*

## Atari Q.A.

Michael Gilmartin  
*Director of Publishing Support*

Ken Ford  
*IT Manager/Western Region*

Michael Vetsch  
*Manager of Technical Support*

Michael Craighead  
*Director of Quality Assurance, North America*

Kurt Boutin  
*Senior Manager; Q.A. Certification Group*

Randy Lee  
Bill Carroll  
*Q.A. Testing Managers*

## Beverly Team

Mark Huggins  
Matt Pantaleoni  
Lenny Montone  
*Lead Testers*

Tad Pantaleoni  
Nick Lazzara  
*Assistant Leads*

Greg Amato  
Scott Bigwood  
Jay Brown  
Mike Callahan  
Brett Casta  
Paul Duke

Dena Fitzgerald  
Ronald Foskin  
Robert Gagne  
Shawn He

Tim Higgins  
Joseph Howard  
Roy Husson  
Erik Jeffery  
Eric Kirchberg

Mike Krapovicky  
Cliff McClure  
Dani McDowell  
Chris Parsons  
Tim Lang

Chad Rabinovitz  
Scott Rollins  
Tobias Seltsam  
Joshua Strom  
Joseph Taylor  
Tam Vo  
Stephan Wenninger  
Jeremiah Williams  
*Testers*

## Seattle Team

Elizabeth Campbell  
*Lead Tester*

Caleb Brown  
Mike Posey  
Rod Caraballo  
Jason Halverson  
Mike McKenney  
*Testers*

## Sunnyvale Team

Marshall Clevesy  
*Lead Tester*

Joe Acedillo  
Tom Andrade  
Patricia Cody  
Michael Griffin  
Barry Kearns  
Franco Junio  
Scotte Kramer  
Kory O'Daniels  
Carl Vogel  
Justin Walsh  
*Testers*

## Technical Verification

Dave Strang  
*Compatibility Lab Supervisor*

Cuong Vu  
*Compatibility Lead*

Randy Buchholz  
Jason Cordero  
Mark Florentino  
Burke McQuinn  
Chris McQuinn  
*Compatibility Analysts*

## ATARI WEB SITES

To get the most out of your new game, visit us at:  
<http://www.us.atari.com>

To send e-cards to your friends, download wallpapers, or get access to other free stuff, visit our Freebies section at:  
[www.us.atari.com/freebies](http://www.us.atari.com/freebies)

If you would like to chat with other gamers, as well as developers, visit our Community Forum area at:  
[www.ataricomunity.com](http://www.ataricomunity.com)

Kids, check with your parent or guardian before visiting any web site.

Chat Messages: Atari does not monitor, control, endorse, or accept responsibility for the content of chat messages. You are strongly encouraged not to give out identity or other personal information through chat message transmissions. Kids, check with your parent or guardian if you are concerned about any chat you receive.

Use of Atari web sites is subject to terms and conditions, which you can access at:

[www.us.atari.com/terms\\_of\\_service.asp](http://www.us.atari.com/terms_of_service.asp)



# TECHNICAL SUPPORT (U.S. & CANADA)

## Help Via the Internet

---

Up-to-the-minute technical information about Atari products is generally available 24 hours a day, 7 days a week via the Internet at:

<http://www.atari-support.com>

Through this site you'll have access to our **FAQ** (Frequently Asked Questions) documents, our **FTP** (File Transfer Protocol) area where you can download patches if needed, our **Hints/Cheat Codes** if they're available, and an **E-Mail** area where you can get help and ask questions if you do not find your answers within the **FAQ**.

**Note:** In the event we must send you a Hint Sheet, FAQ document, patch or update disc via E-mail, we may require verifiable consent from a parent or guardian in order to protect children's privacy and safety online. Consent Forms are available at the web site listed above.

## Help Via Telephone/Fax in the United States & Canada

---

For phone assistance, call **Atari Technical Support** at (425) 951-7106. Our **Interactive Voice Response** system is generally available 24/7, providing automated support solutions immediately.

Great News! We've improved our Automated Systems so that you can get product-specific Troubleshooting help more quickly. All you need to do is enter the product's **Part #** when prompted to do so. This will take you directly to all of our known issues and solutions for this title. The product's **Part #** is located in several places (on the CD label, package and/or plastic disc case) and is usually identified by a number such as 04-12345. When prompted by the Automated System, enter the **last five digits** of your product's Part #. (For example, Part # 04-12345 would require that you enter the "12345" portion of the number for that product.) **Note:** Some products simply feature a five-digit Part # without an "04-" prefix.

Live support is generally available Monday through Friday, 8:00 AM until 6:00 PM (Pacific Time). **Note:** We may be closed on major holidays.

Before making your call, we ask that you be at your computer, have the following information available, and be ready to take notes:

- System Make and Model
- Processor Type
- Operating System, including version number if possible (such as Windows® 98; Windows® Me)
- RAM (Memory)
- Video and sound card data and drivers
- Any screen or error messages you've encountered (and where)

You may also fax in your Technical Support questions or problems to (425) 806-0480.

## Product Return Procedures in the United States & Canada

---

In the event our technicians at (425) 951-7106 determine that you need to forward materials directly to us, please include a brief letter explaining what is enclosed and why. Make sure you include the Return Merchandise Authorization Number (RMA#) supplied to you by the technician, and your telephone number in case we need to call you. You will receive the mailing address when the technician gives you the RMA#. Any materials not containing this RMA# will be returned to you unprocessed.

## Warranty Policy in the United States & Canada

---

If our technicians determine that the product storage medium is found to be defective within ninety (90) days of original purchase, (unless otherwise provided by applicable law), Atari, Inc. will replace the item free of charge, to the original purchaser, if the item is accompanied by the original dated receipt and packaging. If you do not have the original receipt, or if the warranty period has expired, Atari, Inc. will replace the product storage medium for a nominal fee.



# END-USER LICENSE AGREEMENT

**IMPORTANT — READ CAREFULLY:** Please be sure to carefully read and understand all of the rights and restrictions described in this End-User License Agreement ("EULA").

## AGREEMENT

This document is an agreement between you and Atari, Inc. and its affiliated companies ("Company"). The enclosed software game disc(s), cartridge or Game Pak ("Software") and any accompanying printed materials are licensed to you only on the condition that you accept all of the terms contained in this EULA.

By opening this package and installing or otherwise using the Software you agree to be bound by the terms of this EULA. If you do not agree to the terms of this EULA you may not install or use the Software and within 15 days of purchase you must call the Tech Support telephone number listed in the manual accompanying the Software (the "Manual"). Select the Automated Phone System's Main Menu option for Consumer Services and follow the prompts.

You will be given a Return Merchandise Authorization number (RMA #) by the technician. You then have 15 days from the date of this contact to return the Software in its protective covering, the Manual and the original sales invoice to the address supplied to you.

If this is a PC product, when you install the Software you will be asked to review and either accept or not accept the terms of the EULA by clicking the "I Accept" button. By clicking the "I Accept" button you acknowledge that you have read the EULA, understand it and agree to be bound by its terms and conditions.

## COPYRIGHT

The Software is protected by copyright laws and international copyright treaties, as well as other intellectual property laws and treaties. All title and copyrights in and to the Software (including but not limited to any images, photographs, animations, video, music, text and "applets" incorporated into the Software) and any printed materials accompanying the Software are owned by the Company or its Licensors.

## GRANT OF LICENSE

The Software is licensed and not sold to you and its use is subject to this EULA. The Company grants you a limited, personal, non-exclusive license to use the Software in the manner described in the user documentation. The Company reserves all rights not expressly granted to you in this EULA.

## PERMITTED USES

1. If the Software is configured for loading on a hard drive, you may install and use the Software on a single computer.
2. You may make and maintain one copy of the Software for backup and archival purposes, provided that the original and copy of the Software are kept in your possession.
3. You may permanently transfer all your rights under this EULA, provided you retain no copies, you transfer all of the Software (including all component parts, the media and printed materials and any upgrades) and the recipient reads and accepts this EULA.

## RESTRICTIONS

1. You may not delete or obscure any copyright, trademark or other proprietary notice on the Software or accompanying printed materials.
2. You may not decompile, modify, reverse engineer, disassemble or otherwise reproduce the Software.
3. You may not copy, rent, lease, sublicense, distribute, publicly display the Software, create derivative works based on the Software (except to the extent expressly permitted in the Editor and End-User Variation section of this Agreement or other documentation accompanying the Software) or otherwise commercially exploit the Software.
4. You may not electronically transmit the Software from one computer, console or other platform to another or over a network.
5. You may not use any backup or archival copy of the Software for any purpose other than to replace the original copy in the event it's destroyed or becomes defective.

## EDITOR AND END-USER VARIATIONS

If the Software includes a feature that allows you to modify the Software or to construct new variations (an "Editor"), you may use such Editor to create modifications or enhancements to the Software, including the construction of new levels (collectively the "Variations"), subject to the following restrictions. Your Variations: (i) must only work with the full, registered copy of the Software; (ii) must not contain modifications to any executable file; (iii) must not contain any libelous, defamatory or other illegal material, material that is scandalous or invades the rights of privacy or publicity of any third party; (iv) must not contain any trademarks, copyright-protected work or other property of third parties; and (v) may not be commercially exploited by you, including but not limited to making such Variations available for sale or as part of a pay-per-play or timesharing service.

## TERMINATION

This EULA is effective until terminated. You may terminate this EULA at any time by destroying the Software. This EULA will terminate automatically without notice from the Company if you fail to comply with any provisions of this EULA. All provisions of this EULA as to warranties, limitation of liability, remedies and damages will survive termination.

## LIMITED WARRANTY AND DISCLAIMER OF WARRANTIES

You are aware and agree that use of the Software and the media on which is recorded is at your sole risk. The Software and media are supplied "AS IS." Unless otherwise provided by applicable law, the Company warrants to the original purchaser of this product that the Software storage medium will be free from defects in materials and workmanship under normal use for ninety (90) days from the date of purchase. The warranty is void if the defect has arisen through accident, abuse, neglect or misapplication. If the Software fails to conform to this warranty, you may at your sole and exclusive remedy, obtain a replacement free of charge if you return the defective Software. Follow the Product Return Procedures described in the Manual. The Company does not warrant that the Software or its operations or functions will meet your requirements, or that the use of the Software will be without interruption or error.

**TO THE FULLEST EXTENT PERMISSIBLE UNDER APPLICABLE LAW, EXCEPT FOR THE EXPRESS WARRANTY SET FORTH ABOVE, THE COMPANY DISCLAIMS ALL WARRANTIES, EXPRESS OR IMPLIED, INCLUDING AND WITHOUT LIMITATION, THE IMPLIED WARRANTIES OF MERCHANTABILITY AND FITNESS FOR A PARTICULAR PURPOSE AND NON-INFRINGEMENT. EXCEPT FOR THE EXPRESS WARRANTY SET FORTH ABOVE, THE COMPANY DOES NOT WARRANT, GUARANTEE OR MAKE ANY REPRESENTATION REGARDING THE USE OR THE RESULTS OF THE USE OF THE SOFTWARE IN TERMS OF ITS CORRECTNESS, ACCURACY, RELIABILITY, CURRENTNESS OR OTHERWISE. SOME JURISDICTIONS DO NOT ALLOW THE EXCLUSION OF OR LIMITATIONS ON IMPLIED WARRANTIES, SO THE ABOVE EXCLUSIONS AND LIMITATIONS MAY NOT APPLY TO YOU.**

## LIMITATION OF LIABILITY

**IN NO EVENT WILL THE COMPANY OR ITS EMPLOYEES OR LICENSORS BE LIABLE FOR ANY INCIDENTAL, INDIRECT, SPECIAL, CONSEQUENTIAL OR PUNITIVE DAMAGES, OR ANY DAMAGES WHATSOEVER (INCLUDING, WITHOUT LIMITATION, DAMAGES FOR INJURY TO PERSON OR PROPERTY, FOR LOSS OF PROFITS, BUSINESS INTERRUPTION, LOSS OF BUSINESS INFORMATION, LOSS OF PRIVACY, FAILURE TO MEET ANY DUTY AND NEGLIGENCE) ARISING OUT OF OR IN ANY WAY RELATED TO THE USE OR INABILITY TO USE THE SOFTWARE, EVEN IF THE COMPANY OR AN AUTHORIZED REPRESENTATIVE OF THE COMPANY HAS BEEN ADVISED OF THE POSSIBILITY OF SUCH DAMAGES. SOME JURISDICTIONS DO NOT ALLOW THE EXCLUSION OF LIABILITY FOR INCIDENTAL OR CONSEQUENTIAL DAMAGES, SO THE ABOVE EXCLUSION MAY NOT APPLY TO YOU.**

**IN NO EVENT WILL THE LIABILITY OF THE COMPANY FOR DAMAGES WITH RESPECT TO THE SOFTWARE EXCEED THE AMOUNTS ACTUALLY PAID BY YOU FOR THE SOFTWARE.**

## CHOICE OF LAW AND VENUE

This EULA is governed by the laws of the United States of America and the State of New York, exclusive of its conflicts of law provisions. The exclusive venue for litigation regarding or arising from this EULA is New York County, New York and you agree to submit to the Jurisdiction of the courts of New York County, New York for any such litigation.

## MISCELLANEOUS

If any provision or portion of this EULA is found to be unlawful, void, or for any reason unenforceable, it will be severed from and in no way affect the validity or enforceability of the remaining provisions of the EULA.

This EULA constitutes the entire agreement between you and the Company regarding the Software and its use.

NEVERWINTER NIGHTS Shadows of Undrentide

© 2003 Atari, Inc. All Rights Reserved.

Neverwinter Nights, Forgotten Realms, the Forgotten Realms logo, Dungeons & Dragons logo, Dungeon Master, D&D, Baldur's Gate, and the Wizards of the Coast logo are trademarks owned by Wizards of the Coast, Inc., a subsidiary of Hasbro, Inc. and are used by Atari under license. All Rights Reserved.

BioWare, the BioWare Aurora Engine and the BioWare logo are trademarks of BioWare Corp. All Rights Reserved.

FloodGate Entertainment and the FloodGate logo are trademarks of FloodGate Entertainment, LLC.

This product contains software technology licensed from GameSpy Industries, Inc. © 1999-2003 GameSpy Industries, Inc.

Windows and DirectX are either registered trademarks or trademarks of Microsoft Corporation in the United States and/or other countries.

Pentium is a trademark or registered trademark of Intel Corporation or its subsidiaries in the United States and other countries.

Uses Bink Video. Copyright © 1997-2003 by RAD Game Tools, Inc.

All other copyrights and trademarks are property of their respective owners.

05133

## INDEX

### A

#### Adventurers 9

- Deekin Scalesinger 9
- Dorna Trapspringer 9
- Xanos Messarmos 9

#### Alignment Shift 20

#### Atari Web Sites 47

### C

#### Characters in the Tale 8

- Katriana Dorovnia 8
- Master Drogan 8

#### Cities and Towns 6

#### Credits 44

### E

#### End-User License Agreement 50

### F

#### Foes 10

- Basilisk 10
- Faerie Dragons and Pseudodragons 11
- Formians 12
- Gorgon 11
- Medusa 10
- Sphinx 12
- Stingers 12
- Wyrmings 11

### N

#### New Feats 23

- Arcane Defense 23
- Artist 23
- Blind Fight 23
- Blooded 23
- Bullheaded 24
- Circle Kick 24
- Courteous Magocracy 24
- Dirty Fighting 24
- Divine Might 25
- Divine Shield 25
- Expertise 25

Extra Music 25

Extra Stunning Attacks 26

Great Cleave 26

Greater Spell Focus 26

Greater Spell Penetration 26

Improved Expertise 27

Improved Initiative 27

Lingering Song 27

Luck of Heroes 27

Rapid Reload 27

Resist Disease 28

Resist Poison 28

Resistance to Energy 28

Silver Palm 28

Snake Blood 28

Spring Attack 29

Stealthy 29

Strong Soul 29

Thug 29

Zen Archery 29

#### New Skills 21

Appraise 21

Craft Trap 21

Tumble 22

#### New Spells 30

Bard 30

*Balagarn's Iron Horn 30*

*Dirge 30*

*Flare 30*

*Wounding Whispers 30*

Cleric 30

*Bane 30*

*Banshment 32*

*Circle of Doom 32*

*Continual Flame 31*

*Divine Favor 31*

*Earthquake 32*

*Endure Elements 31*

*Entropic Shield 31*

*Greater Sanctuary 32*

*Inflct Critical Wounds 31*

*Inflct Light Wounds 31*

*Inflct Minor Wounds 31*

*Inflct Moderate Wounds 31*

*Inflct Serious Wounds 31*

*Planar Ally 32*

*Shield of Faith 31*

*Undeath's Eternal Foe 32*



Druid 32  
*Blood Frenzy* 33  
*Bombardment* 34  
*Drown* 34  
*Earthquake* 34  
*Flare* 32  
*Greater Magic Fang* 35  
*Inferno* 35  
*Magic Fang* 32  
*Mass Camouflage* 33  
*One With the Land* 35  
*Owl's Insight* 33  
*Quillfire* 33  
*Spike Growth* 35  
*Sunburst* 34

Paladin 34  
*Aura of Glory* 34  
*Divine Favor* 34  
*Endure Elements* 34

Ranger 35  
*Camouflage* 35  
*Greater Magic Fang* 35  
*Magic Fang* 35  
*Mass Camouflage* 35  
*One With the Land* 35

Sorcerer/Wizard Spells 55  
*Acid Splash* 35  
*Balagarn's Iron Horn* 36  
*Banishment* 37  
*Bigby's Clenched Fist* 37  
*Bigby's Crushing Hand* 38  
*Bigby's Forceful Hand* 37  
*Bigby's Grasping Hand* 37  
*Bigby's Interposing Hand* 37  
*Continual Flame* 36  
*Displacement* 36  
*Electric Jolt* 35  
*Expeditious Retreat* 36  
*Firebrand* 37  
*Flare* 35  
*Greater Sanctuary* 38  
*Gust of Wind* 36  
*Isaac's Greater Missile Storm* 37  
*Isaac's Lesser Missile Storm* 36  
*Shield* 35  
*Sunburst* 38  
*Tasha's Hideous Laughter* 36  
*True Strike* 36

## P

Prestige Classes 13  
Arcane Archer 13  
Assassin 14  
Blackguard 15  
Harper Scout 16  
Shadowdancer 18

## S

Saving and Loading 5  
Spells Appendix 42  
System Requirements 5

Anauroch 6  
Hilltop 6  
The Floating Cities of Netheril 7  
The Silver Marches 6

## T

Technical Support 48  
Toolset Additions 40

Aurora Toolset — New Wizards & Features 41  
*Exporting and Importing* 41  
*Plot Wizard* 41  
*Store Setup Wizard* 41  
*Waypoint Walking* 41

Tilesets 40  
*Desert* 40  
*Ruins* 40  
*Rural Winter* 40

## W

Weapons 39  
Grenade-like Weapons 39  
*Acid Flask* 39  
*Alchemist's Fire Flask* 39  
*Caltraps* 39  
*Choking Powder* 39  
*Holy Water Flask* 39  
*Tanglefoot Bag* 39  
*Thunderstone* 39

# NOTES

NOTES

NOTES



NOTES

NOTES

NOTES

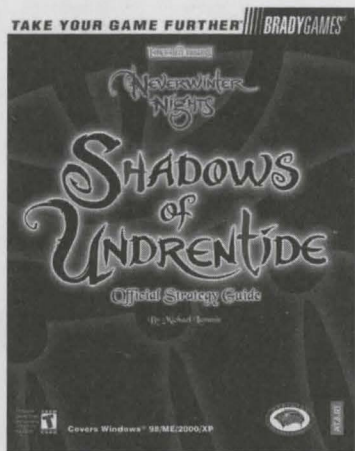
NOTES



NOTES

NOTES

# DISCOVER SECRETS TO ENDLESS ADVENTURES...



## Inside the Official Strategy Guide from BradyGames!

- Comprehensive Character Coverage and Development Strategies.
- Step-by-Step Walkthrough for the Entire Game.
- Expert Battle Tactics.
- Complete Bestiary to Defeat Every Monster.
- Special Full-Color Format!

To purchase BradyGames' *Neverwinter Nights™: Shadows of Undrentide™ Official Strategy Guide*, visit your local electronics, book, or software retailer. Also available online at [bradygames.com](http://bradygames.com).

ISBN: 0-7440-0268-0

UPC: 7-52073-00268-8

PRICE: \$19.99 US / \$28.99 CAN / £14.99 Net UK



Licensed by:



Consumer  
Products

**BRADYGAMES**  
TAKE YOUR GAME FURTHER

NEVERWINTER NIGHTS *Shadows of Undrentide* © 2003 Atari, Inc. All Rights Reserved. Neverwinter Nights, Forgotten Realms, the Forgotten Realms logo, Dungeons & Dragons logo, Dungeon Master, D&D, Baldur's Gate, and the Wizards of the Coast logo are trademarks owned by Wizards of the Coast, Inc., a subsidiary of Hasbro, Inc. and are used by Atari under license. All Rights Reserved. BioWare, the BioWare Aurora Engine and the BioWare logo are trademarks of BioWare Corp. All Rights Reserved. Windows and Windows 95/98/2000 are registered trademarks of Microsoft corporation. All Rights Reserved. All other copyrights and trademarks are property of their respective owners.



# Four have been summoned



Coming October 2003

[www.danddheroes.com](http://www.danddheroes.com)



Blood  
Violence

**Register Online Today!**

*It's as simple as 1, 2, 3!*

**1. Go to [www.gameregister.com](http://www.gameregister.com) 2. Enter your game's info 3. Select a great offer**

**Receive exclusive game-related info and other special offers  
by registering online today!**

**That's it.**

*Atari will not contact you without your express permission and does not sell or  
share registration information. For more information about our privacy policy, go to  
[http://www.us.atari.com/privacy\\_policy.asp](http://www.us.atari.com/privacy_policy.asp)*

**Atari, Inc., 417 Fifth Avenue, New York, NY 10016 USA**

NEVERWINTER NIGHTS Shadows of Undrentide © 2003 Atari Interactive, Inc. All Rights Reserved. Neverwinter Nights, Forgotten Realms, the Forgotten Realms logo, Dungeons & Dragons logo, Dungeon Master, D&D, Baldur's Gate, and the Wizards of the Coast logo are trademarks owned by Wizards of the Coast, Inc., a subsidiary of Hasbro, Inc. and are used by Atari under license. All Rights Reserved. Microsoft, Xbox and the Xbox Logos are either registered trademarks or trademarks of Microsoft Corporation in the U.S. and/or in other countries and are used under license from Microsoft.