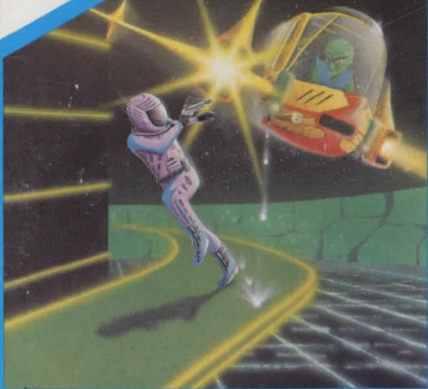


ANOTHER GREAT
ADVENTURE
GAME FOR
THE 16/48K
SPECTRUM

PLANET OF DEATH



ARTIC COMPUTING LTD
396 JAMES RECKITT AVE
HULL N.HUMBERSIDE
HU8 0JA



PLANET OF DEATH

GENERAL LOADING AND RUNNING INSTRUCTIONS

- 1 Assemble the cassette tape at the silent part before the program.
- 2 Connect the EAR socket on the SPECTRUM to the EAR or LOUD-SPEAKER socket on your cassette recorder.
- 3 Adjust the volume of the cassette recorder to $\frac{3}{4}$ maximum and the tone controls to maximum treble and minimum bass.
- 4 Type LOAD " " CODE (CODE - extended Mode 1). Do not press ENTER yet.
- 5 Start the cassette recorder and now press ENTER. Instructions in Program.

PLANET OF DEATH

Adventures are games in which you explore and discover a strange new world without leaving the comfort of your chair. The computer will act as your puppet, eyes and other senses.

You instruct the computer using short sentences, usually verb-noun, and providing the computer understands it will obey your command. If the computer does not understand, then try re-wording the command.

In each location you may find objects which you can manipulate and use in further locations to help you progress on your adventure. When entering your command you may use the DELETE key to erase any letters.

In this adventure you find yourself stranded on an alien planet. Your aim is to escape from this planet by finding your, now captured and disabled, Space Ship.

You will meet various hazards and dangers on your adventure, some natural, some not – all of which you must overcome to succeed.

GOOD LUCK !!!

©1981 ARTIC COMPUTING

16/48K
SPECTRUM

PLANET OF DEATH

ARTIC
COMPUTING
LIMITED

ALSO AVAILABLE FROM ARTIC COMPUTING LTD.

ARCADE
GAMES

ADVENTURE
GAMES

VARIOUS
UTILITY
PROGRAMS

Unauthorised Copying, Lending, Hiring is prohibited.