



The Longest Journey

Have you ever had a dream so real...
you are not sure if you are awake or dreaming?

| | | |
|---|------------------------------|-----|
| 1 | Introduction | 4 |
| | The Integral Journey | 5 |
| | And How Another World | 6 |
| 2 | Learning to read | 8 |
| | Systemic Architecture | 8 |
| | Forming the Learning Journey | 9 |
| | Designing the Context | 10 |
| | Learning to Design | 11 |
| | Thinking in Design | 12 |
| | Learning to Design | 12 |
| 3 | Learning to Design | 13 |
| | Learning to Design | 14 |
| | Learning to Design | 15 |
| | Learning to Design | 16 |
| | Learning to Design | 17 |
| | Learning to Design | 18 |
| | Learning to Design | 19 |
| | Learning to Design | 20 |
| | Learning to Design | 21 |
| | Learning to Design | 22 |
| | Learning to Design | 23 |
| | Learning to Design | 24 |
| | Learning to Design | 25 |
| | Learning to Design | 26 |
| | Learning to Design | 27 |
| | Learning to Design | 28 |
| | Learning to Design | 29 |
| | Learning to Design | 30 |
| | Learning to Design | 31 |
| | Learning to Design | 32 |
| | Learning to Design | 33 |
| | Learning to Design | 34 |
| | Learning to Design | 35 |
| | Learning to Design | 36 |
| | Learning to Design | 37 |
| | Learning to Design | 38 |
| | Learning to Design | 39 |
| | Learning to Design | 40 |
| | Learning to Design | 41 |
| | Learning to Design | 42 |
| | Learning to Design | 43 |
| | Learning to Design | 44 |
| | Learning to Design | 45 |
| | Learning to Design | 46 |
| | Learning to Design | 47 |
| | Learning to Design | 48 |
| | Learning to Design | 49 |
| | Learning to Design | 50 |
| | Learning to Design | 51 |
| | Learning to Design | 52 |
| | Learning to Design | 53 |
| | Learning to Design | 54 |
| | Learning to Design | 55 |
| | Learning to Design | 56 |
| | Learning to Design | 57 |
| | Learning to Design | 58 |
| | Learning to Design | 59 |
| | Learning to Design | 60 |
| | Learning to Design | 61 |
| | Learning to Design | 62 |
| | Learning to Design | 63 |
| | Learning to Design | 64 |
| | Learning to Design | 65 |
| | Learning to Design | 66 |
| | Learning to Design | 67 |
| | Learning to Design | 68 |
| | Learning to Design | 69 |
| | Learning to Design | 70 |
| | Learning to Design | 71 |
| | Learning to Design | 72 |
| | Learning to Design | 73 |
| | Learning to Design | 74 |
| | Learning to Design | 75 |
| | Learning to Design | 76 |
| | Learning to Design | 77 |
| | Learning to Design | 78 |
| | Learning to Design | 79 |
| | Learning to Design | 80 |
| | Learning to Design | 81 |
| | Learning to Design | 82 |
| | Learning to Design | 83 |
| | Learning to Design | 84 |
| | Learning to Design | 85 |
| | Learning to Design | 86 |
| | Learning to Design | 87 |
| | Learning to Design | 88 |
| | Learning to Design | 89 |
| | Learning to Design | 90 |
| | Learning to Design | 91 |
| | Learning to Design | 92 |
| | Learning to Design | 93 |
| | Learning to Design | 94 |
| | Learning to Design | 95 |
| | Learning to Design | 96 |
| | Learning to Design | 97 |
| | Learning to Design | 98 |
| | Learning to Design | 99 |
| | Learning to Design | 100 |



| | | |
|---|---------------------------------|-----|
| 5 | Introduction | 24 |
| | Writing | 25 |
| | General Skills | 26 |
| | How to Play Through the Problem | 27 |
| 6 | Translating | 28 |
| | Creating the Problem | 29 |
| | Complex Problems | 30 |
| 7 | Complex | 31 |
| | Writing | 32 |
| 8 | Complex | 33 |
| | Writing | 34 |
| | Complex | 35 |
| | Writing | 36 |
| | Complex | 37 |
| | Writing | 38 |
| | Complex | 39 |
| | Writing | 40 |
| | Complex | 41 |
| | Writing | 42 |
| | Complex | 43 |
| | Writing | 44 |
| | Complex | 45 |
| | Writing | 46 |
| | Complex | 47 |
| | Writing | 48 |
| | Complex | 49 |
| | Writing | 50 |
| | Complex | 51 |
| | Writing | 52 |
| | Complex | 53 |
| | Writing | 54 |
| | Complex | 55 |
| | Writing | 56 |
| | Complex | 57 |
| | Writing | 58 |
| | Complex | 59 |
| | Writing | 60 |
| | Complex | 61 |
| | Writing | 62 |
| | Complex | 63 |
| | Writing | 64 |
| | Complex | 65 |
| | Writing | 66 |
| | Complex | 67 |
| | Writing | 68 |
| | Complex | 69 |
| | Writing | 70 |
| | Complex | 71 |
| | Writing | 72 |
| | Complex | 73 |
| | Writing | 74 |
| | Complex | 75 |
| | Writing | 76 |
| | Complex | 77 |
| | Writing | 78 |
| | Complex | 79 |
| | Writing | 80 |
| | Complex | 81 |
| | Writing | 82 |
| | Complex | 83 |
| | Writing | 84 |
| | Complex | 85 |
| | Writing | 86 |
| | Complex | 87 |
| | Writing | 88 |
| | Complex | 89 |
| | Writing | 90 |
| | Complex | 91 |
| | Writing | 92 |
| | Complex | 93 |
| | Writing | 94 |
| | Complex | 95 |
| | Writing | 96 |
| | Complex | 97 |
| | Writing | 98 |
| | Complex | 99 |
| | Writing | 100 |

| | | |
|----------|----------------------------------|----|
| 1 | Prologue | |
| | Introduction | 4 |
| | The Longest Journey | 5 |
| | April Ryan and Her World | 6 |
| 2 | Getting started | |
| | System Requirements | 8 |
| | Installing The Longest Journey | 8 |
| | Running the Game | 10 |
| | Hardware Set-up | 11 |
| | The Game Menu | 12 |
| | Game Settings | 12 |
| 3 | Playing the game | |
| | How to Play the Game | 14 |
| | The Toolbar and Game Windows | 14 |
| | The Game Interface | 15 |
| | The Inventory | 17 |
| | Close-Up View of Items | 18 |
| | Talking to Other Characters | 19 |
| | Displaying Exits | 20 |
| | Looking Through Aprils Eyes | 21 |
| | Using Maps | 21 |
| | Saving and Loading the Game | 22 |
| | Helping You Out | 22 |
| | Quitting the Game | 23 |
| 4 | The Diary | |
| | Accessing the Diary Menu | 24 |
| | Save/Load Game Screens | 24 |
| | Game Settings | 25 |
| | Conversation Log | 25 |
| | Aprils Diary | 25 |
| | Video Replay | 26 |
| 5 | Walkthrough | |
| | Warning! | 28 |
| | General Hints | 28 |
| | How to Play Through the Prologue | 29 |
| 6 | Troubleshooting | |
| | Shooting the Trouble | 32 |
| | Common Problems | 32 |
| 7 | Contact | |
| | Funcom | 34 |
| | Credits | |
| 8 | Funcom | 36 |
| | Cast of Characters | 40 |



Prologue

Introduction

Between science and magic, between order and chaos, between Stark and Arcadia, there is an ancient Balance. For thousands of years, this Balance has weighed the scales of the cosmos evenly, ensuring harmony between the twin worlds.

But now, in an age of great turmoil, Chaos threatens to turn the scales and bring our most terrifying dreams to life.

The Guardian of the Balance has abandoned his throne...

The armies of the Vanguard are advancing...

A storm is coming...

And the fate of worlds is in the hands of one person.

Her name is April. She is a Shifter. The power to walk between worlds is within her grasp, and her destiny is foretold in a hundred tales. But the tides of Chaos gain momentum with every passing second, and those who would be gods will not stand idly by. How, then, can one person prevail against impossible odds?

April's future is shrouded in a veil of mystery, the path ahead treacherous and winding, and her journey will carry her not only through the twin worlds of science and magic, but also into her own heart and soul.

This is the longest journey of them all.

The Longest Journey

The Longest Journey is an adventure game. There are no guns to shoot, no explosives to set off, no monsters to... Uh, hold on, there are monsters. But unlike most games, in **The Longest Journey** your most potent weapon and your greatest asset is your brain. Adventure games are all about solving puzzles, exploring new worlds, meeting and talking to strange creatures both friendly and not quite so friendly, and about figuring how the heck you're going to get out of the jam you've got yourself into this time.

April Ryan, the protagonist of **The Longest Journey** (and your alter ego in the game), can't die. We believe it's very frustrating for the player to spend hours solving a puzzle only to have a piano dropped on her head when she pushes the wrong lever. But this doesn't mean the game isn't challenging. It just means that, whatever you do, right or wrong, you don't have to worry about being punished. Games are supposed to be *fun*, not aggravating.

If this is your first time playing an adventure game, good luck! You're in for a treat, and probably a totally different gaming experience from what you're used to. If you ever get stuck, take some time out to just look around, experiment with the items in your inventory, talk to people. You may also want to check out the chapter of this manual called "Walk-Through". Not only does it contain a detailed explanation on how to get through the Prologue, it also has a few helpful pointers that may get you back on the right track wherever you're stuck.

If you *have* played adventure games in the past you probably know what to expect. Or at least you *think* you know what to expect. Well, good luck to you too. **The Longest Journey** has quite a few surprises hidden up its sleeves. And while the interface and play mechanisms will probably be familiar to you, it's still a good idea to read through this manual thoroughly before playing.

Whoever you are, and whatever your past experience with adventure games, we'd love to hear back from you with comments and criticisms regarding this game. We're always striving to make better games, and we can only do so with your assistance. You can find contact information in the back of this manual.

Thanks for purchasing **The Longest Journey**. And, as the denizens of Arcadia would tell you, may the Balance protect you and provide you on your journey.

April Ryan and Her World

April Ryan is the protagonist and "star" of **The Longest Journey**, and she will be your alter ego through the course of the game. She is eighteen years old, and she just moved from the countryside to a big city called Newport to attend college at the prestigious Venice Academy of the Visual Arts. April is a budding artist, and she hopes to some day be a successful painter and illustrator.

The Longest Journey takes place a few hundred years into the future (in the 23rd Century, to be specific), but April's world is not so different from ours. Granted, there are hovercrafts and faster-than-light spaceships, artificially manufactured black holes that transmit data across vast distances in an instant, cops with exoskeletal uniforms and corporate sponsorships, private colonies on distant worlds, designer drugs that make dreams real, and movies that envelop you with sounds, smells, holographic visuals and artificially transmitted emotions. Yet April's neighbourhood looks a lot like any contemporary urban neighbourhood, and her friends talk about the things that young people talk about anywhere, at any time.

Newport is a city somewhere in North America, and Venice is the name of April's neighbourhood - a young, hip and liberal "village" located right in the middle of the greater metropolis. You'll learn a lot about the neighbourhood and the city itself by talking to people, asking them questions, and looking at everything there is to look at.

April's relationship with her parents is strained, and she writes about this in her diary. It's a good idea to read through everything April has already written (once you find out how, of course - see the chapter called "April's Diary"), because the past does come back to haunt her in a number of ways.

We've tried to make April's futuristic world as interesting and realistic a place as possible, and we hope that, by playing the game, you'll start to care about April, her friends and the city she lives in. Which means that, by the time you're cast into a completely different world - one that's alien to both you, the player, and to April herself - it will be that much more difficult to adjust.

But hey, it wouldn't make for a very interesting adventure otherwise!





2 Getting Started

System Requirements

Minimum System Requirements:

- Windows® 95, Windows® 98 or Windows® 2000
- Pentium® 166 MMX
- 32MB RAM
- 4X CD-ROM drive
- Mouse and keyboard
- 640*480 SVGA high colour (16-bit) DirectX™ compatible video card with 2MB RAM
- Windows®-compatible sound device
- 220MB free hard drive space

Recommended System Requirements:

- Pentium® II 266
- 64MB RAM
- 3D graphics accelerator card (Direct 3D™ compatible) with 4MB RAM
- 8X CD-ROM drive
- 1GB+ free hard drive space

Installing The Longest Journey

Close all open windows on your desktop and quit all other applications. Insert the first game CD (labelled "Disc 1") into your CD-ROM drive. If your CD-ROM drive has Auto insert notification enabled, the Launcher utility will appear. If Auto insert

notification is disabled, and the game's Launcher does not automatically appear, you will need to either enable Auto insert notification (see your Windows® documentation for more information) or open the Launcher manually. To do this, double-click the My Computer icon on your desktop, and then double-click the CD-ROM icon in the window that opens. Double-click the **launcher.exe** file to open the Launcher. It will contain the following options:

- **Install.** Installs the game on your hard drive.
- **Install DirectX™ 7.** This option installs Microsoft® DirectX™ 7 on your computer, if required. A normal installation of the game will automatically determine whether or not you need to perform this installation.
- **View Read Me File.** We strongly suggest that you open the Read Me file to view the most up-to-date information. This document includes a Troubleshooting section for detailed installation and troubleshooting tips.
- **Quit.** Quits the Launcher and returns you to your desktop.

To install the game, click the Install button, and follow the on-screen instructions.

You will be asked to select the preferred size of your installation. If you have enough space on your hard drive (more than 1 GB), you should choose the Maximum installation size. This will ensure the best possible performance. You must also choose a local destination for the installation. The default directory is either **C:\Program Files\The Longest Journey** (the letter of your hard drive may be different), or any folder labelled **Games** that may exist on your local hard drives. Click Next to choose the default option, or the Browse button to create a new folder or to select an existing folder. A directory called **The Longest Journey** will automatically be created in the specified folder.

Next, you will be given the option to create a series of shortcuts for your Start Menu. Creating a shortcut will make it easier for you to start the game. Click the check boxes to deselect any shortcuts you don't want in the Start Menu.

The installer will now create a The Longest Journey Program Folder for the program icons. Click Next to choose the default option (**Program Files\Games\The Longest Journey**), or you can create a new folder or select an existing folder, then click Next.

At this point, the installation will begin copying files from the CD-ROM to your hard drive. Depending on the speed of your CD-ROM and the size of the installation, this may take up to thirty minutes.

After the installation is complete, you will be prompted to create a shortcut for your desktop. You may deselect this option if you do not wish to create a

The Longest Journey icon on your desktop.

If the game has been successfully installed, you will see a **Set-up Complete** screen. The Installer will now try to detect the existence of DirectXTM 7 (or later) on your system. If DirectXTM 7 has not been installed it will be installed automatically. If you need to update your DirectXTM installation at any point, you may do so from the Launcher.

The Installer will then close down, and you will be returned to the Launcher. If you're connected to the Internet, please take a few minutes to register your product by clicking the Register button on the Launcher. By registering, we will be able to inform you of any updates or special offers that are available.

You are now ready to play **The Longest Journey!**

Running the Game

If you've just installed the game, the Launcher should already be running, and you may skip the following paragraph.

To run the game, insert **The Longest Journey** "Disc 1" into your CD-ROM drive. The game's Launcher will appear automatically if Auto insert notification is enabled. If Auto insert notification is disabled, you will have to locate the application icon in the Start Menu, on your desktop, or in the game directory on your hard drive. Double-click the icon to start the Launcher.

The Launcher now has the following options:

- **Play.** Start the game.
- **Re-install.** Updates your installation of **The Longest Journey**. This may be necessary if the game files for some reason have become corrupted. Re-installing the game will not delete your saved games.
- **Uninstall.** This option removes the game from your computer. You will be asked whether or not you want to keep your saved games. If you are planning to continue playing **The Longest Journey** at some point, keep this check box checked.
- **Install DirectXTM 7.** Microsoft® DirectXTM 7 must be installed on your system in order to run the game.
- **Register.** If you're connected to the Internet, you will be able to submit your registration electronically.
- **View Read Me File.** We strongly suggest that you open the Read Me file to view the most up-to-date information. This document includes a Troubleshooting section for detailed installation and troubleshooting tips.

- **Quit.** Quits the Launcher, and returns you to your desktop.

After you click the Play button, you will be brought to the Hardware Set-up screen. If you have more than one video card in your system (e.g. a 3D accelerator) you must select which card you wish to use. In most cases, the default settings are correct for your system. See the "Hardware Set-up" section of this manual for a closer description of the various options.

Before playing the game, you must also choose a Player Name to identify your save-games. The default name is the current user's Windows® login name. If no login name is available, the default player name is set to "April Ryan". If more than one person is going to play the game, change this to your own name, or a nickname of your choice. Click OK to continue, or Cancel to return to the Launcher.

You are now ready to embark on **The Longest Journey.**

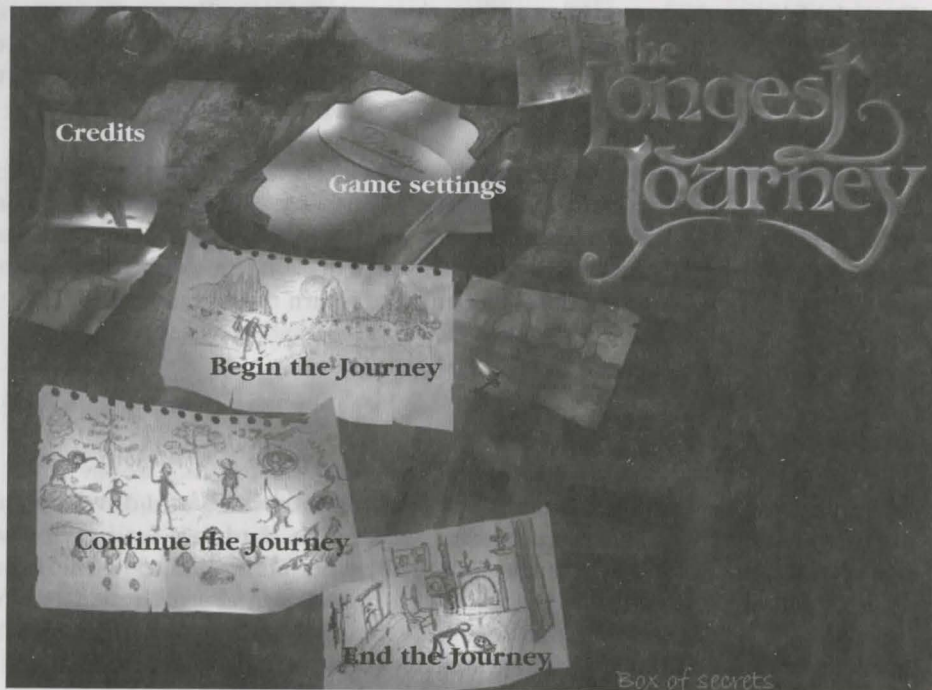
Hardware Set-up

Before running the game, you must select your preferred video card driver, colour depth, and software or hardware rendering-mode. The Hardware Set-up window will appear automatically when you click the Play button in the Launcher. If you change your video card at any point, or wish to select an alternative video card driver (i.e. if you have more than one video card in your system, like a 3Dfx Voodoo or Voodoo 2), you may have to change these settings.

The Hardware Set-up screen contains the following options:

- **Video Driver.** Select your desired video card driver from the pull-down menu, and choose whether to enable or disable hardware rendering. If your video-card doesn't support hardware rendering, this selection will be greyed out. In most cases, if hardware rendering is available, you should choose to enable this option. However, if you encounter any problems running the game, you may want to try selecting software rendering instead. Please see the trouble-shooting section of the Read Me file for more information.
- **Colour Depth.** The default option is 16-bit colour depth (65,000 colours). However, if you have a Pentium® II or equivalent, and a fast video card with 16MB RAM or more that supports 32-bit rendering, you may choose to run the game in 32-bit colour depth (16 million colours). This will dramatically improve the quality of the in-game graphics. However, performance may be affected, and if the game seems to be running slowly, try changing this back to 16-bit colour depth.
- **High Quality April Model.** This box is checked by default. If you have a slow computer or video card, or the game seems to be running slowly, try deselecting

this option. The April character will look less detailed, but the game may run faster. The Advanced options are only applicable if you're experiencing problems with the game. Please refer to the troubleshooting section of this manual or the Read Me file for more information.



The Game Menu

After starting the game from the Launcher, you will be brought to the Game Menu. This screen has the following options, accessed by moving the cursor with the mouse and left clicking on the book and the various drawings on the screen:

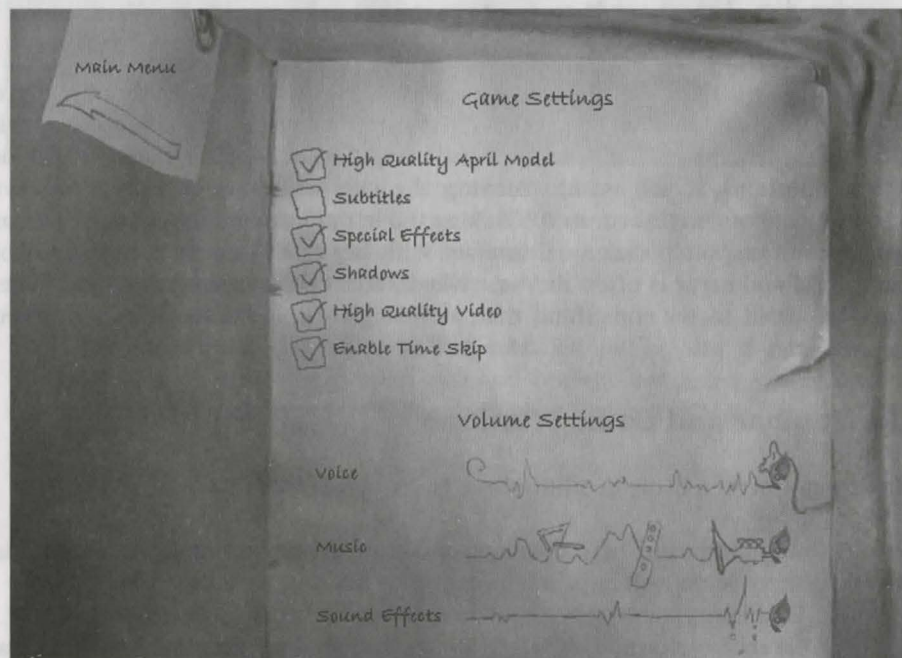
- **Game Settings.** Brings up the Game Settings Screen (see below).
- **Begin the Journey.** Starts a new game.
- **Continue the Journey.** Brings you to the Load Game screen for the currently selected player.
- **Credits.** Rolling credits, listing the names of all the people who contributed to **The Longest Journey.**
- **End the Journey.** Quits the game and exits to the desktop.

Game Settings

Clicking on the Game Settings drawing on the Game Menu, or the Game Settings button in the Diary Menu (see the "Diary Menu" section of this manual for more

information) brings you to the following screen. The options are as follows

- **High Quality April Model.** When checked, the 3D model of April in the game is presented in high detail. If the game is choppy or slow, try deselecting this option.
- **Subtitles.** When checked, subtitles are displayed for all in-game dialogue.
- **Special Effects.** This turns on and off the particle effects in the game. If you have a slow computer, and the game is choppy, uncheck this box.
- **Shadows.** When checked, all characters cast shadows. If the game is running slowly, try deselecting this option.
- **High Quality Video.** Depending on the speed of your computer and CD-ROM, you may choose to enable or disable high quality video. In order to run the video sequences in high quality, you will need a Pentium® II 266 or better. If your system does not meet this requirement, please keep this check box clear, or the video sequences will appear choppy.
- **Volume Settings.** You may adjust the volume for voice, music and sound-effects



independently. Moving the volume slider all the way to the left will mute the selected sound channel. Moving it all the way to the right will increase the volume to maximum.

Click the Go Back icon or press the Escape button on your keyboard to return to the previous screen. Your settings will automatically be stored.



3 Playing the Game

How to Play the Game

The **Longest Journey** is a game of exploration and experimentation, where taking chances and making mistakes is half the fun, and where diligence and quick thinking are rewarded. The game is played using the mouse (and the keyboard for certain shortcuts, if you wish). Moving the cursor around the screen allows certain "hot-spots" to be accessed. Clicking the left mouse-button while the cursor is on these hotspots makes April interact with her environment in a number of ways. Trial and error is often the best way to succeed, and since April can't die, don't be afraid to try something that, at first glance, looks dangerous or even impossible.

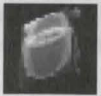
The Toolbar and Game Windows

The in-game screen is divided into three "windows":

The Toolbar is activated by moving your cursor to the top of the screen. The following three icons will appear:



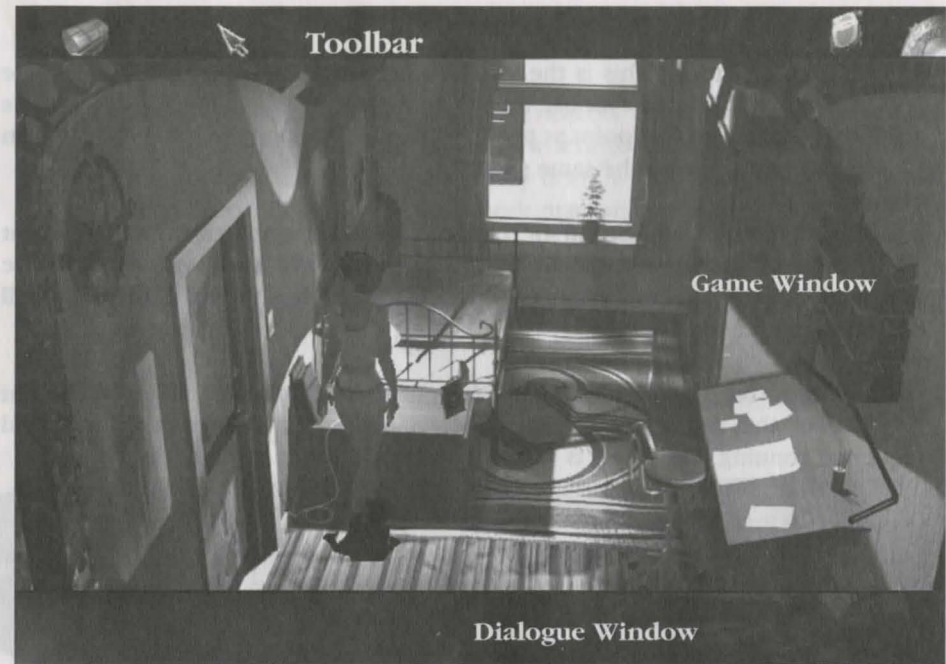
Inventory icon. Left-clicking this brings up your inventory window (see "The Inventory").



Diary icon. Left-clicking this brings up the Diary Menu (see "The Diary Menu").



Exit icon. Left-clicking this exits the game to the Game Menu. Your current game will be forfeited.




The Game Window is where most of the action occurs. This is your window into April's world, and where you will use the cursor to interact with items and characters. See the section called "The Game Interface" for more information about how to interact with the Game Window.


The Dialogue Window is where all the subtitles will appear, if enabled (see "Game Settings"), and where your dialogue options are listed when April is engaged in a conversation (see "Talking to Other Characters").


The Game Interface


In an adventure game, the interface provides the means by which you communicate with your in-game alter ego - in this case, April Ryan - and by which you get the character to do what you want her to do. Most of the time, April will comply with your "orders". Sometimes, however, her actions may not be exactly what you had in mind, and once in a while she will appear to have a mind of her own and refuse to follow your commands. If you try to do something that will most likely get April killed, for example, she might simply refuse to cooperate.

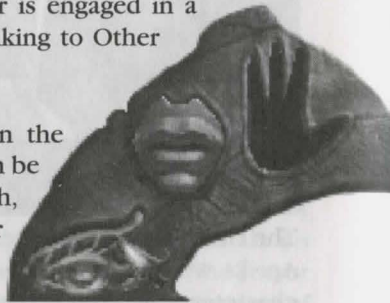
All in-game actions are performed using the on-screen cursor, the mouse to direct this cursor, and the left and right mouse buttons to interact with items and characters. The cursor has four primary states:

 **Normal (blue).** This is the standard cursor. When the cursor looks like this, clicking the left mouse button anywhere in the Game Window makes April walk as close to that point as possible. Double-clicking the left mouse button makes April run to the same spot.


 **Exit (red).** When the cursor turns red, it indicates an exit from the current scene. Click the left mouse button once to make April walk towards the exit, or double-click to make her run. Once she reaches the exit, the game will load the next scene.


 **Non-active (broken).** When the cursor is "broken", the player cannot affect the action on screen. There's either a non-interactive animated sequence running, the game is paused, or the player is engaged in a conversation. If the latter, see the section called "Talking to Other Characters" for more information.


 **Active.** If the cursor passes over an area on the screen that contains either a hot spot, an item that can be manipulated, or a character that April can interact with, it changes into an Active cursor. A tool-tip will appear with a short description of the hot spot. Clicking the left mouse button once brings up a floating menu:



Depending on the hot spot, item or character April is interacting with, the following options may now be available:

 **Eye.** Clicking the left mouse button on this icon will make April look at the currently selected hot spot, item or character.

 **Mouth.** Clicking the left mouse button on this icon will make April talk to a character, or use her mouth to interact with the currently selected item.

 **Hand.** Clicking the left mouse button on this image will prompt April to interact with an item or character physically. If the item can be picked up, this icon will make April pick it up and drop it in her inventory.

In most cases, double-clicking the left mouse button on any of the above icons will make April run to a hot spot, item or character before interacting with it.

The Inventory

Your inventory is the collection of all the objects that April acquires on her journey and that she will need to use somewhere to solve a puzzle. There's no physical limit to how many objects April may bring with her. In other words, she has very, very deep pockets! The inventory may be accessed in three different ways:

- Clicking the right mouse button at any time in the game window (unless the cursor is non-active, or "broken", or the cursor is currently in item mode);
- Pressing the "I" key, or;
- Moving the cursor to the top of the screen and left clicking the Inventory icon located to the far left in the Toolbar.



To add an item to your inventory during game play, position the cursor over an item in the Game Window. If the cursor changes into an active cursor (see above, "The Game Interface") it means you can interact with the object in some way. Left-click, and the floating menu appears. If the hand icon is enabled on this menu you may be able to pick up the item. Left-click the hand, and April proceeds

to either pick up the item or to interact with it in some other way. If it can be picked up, the item will disappear from the Game Window and briefly appear on top of the inventory icon to the far left in the Toolbar before "swirling" into your inventory. To take a closer look at the item you've just picked up, open your inventory (by clicking the right mouse-button), click on the item and choose the eye icon. April will describe the item or, in some cases, a new screen will appear with a close-up of the item.

At various points in the game you will need to combine one item with another, or use an item on an object or character in the current scene:

To combine two items in your inventory you will need to click on the first item in your inventory, and choose the hand icon. Notice that the cursor has now changed into the item you selected. To use the currently selected item with another item in your inventory, simply move the cursor item on top of the second item. If your cursor item starts to flash, this means you can combine the two items. Left-click, and April will perform the necessary action. If the cursor item doesn't flash, the two items cannot be combined. To combine two objects on different inventory pages, left-click the up or down arrows on the right hand side of the inventory, or press the up and down arrows on your keyboard to scroll through your inventory.

To use an item with an object or character in the current scene, select the item as described above, and then move the cursor item outside the inventory window (or press the 'T' button on your keyboard) to close the inventory screen. Position the cursor item on top of the object or character you want to interact with. If the cursor item begins to flash, you can use the item on the selected object or character. You may now left-click to perform the action. If you need to move April across the scene (if, for example, it's a location that spans two screens), left-click the cursor item somewhere where it doesn't flash. April will move as close to that point as possible. Double-clicking the left mouse-button will make April run.

To return a cursor item to your inventory, simply right-click and your cursor will return to normal.

You may also use the 'A' and 'S' keys on your keyboard to cycle through your inventory items without opening the inventory screen. The 'A' key cycles up, and the 'S' key cycles down. Your cursor will change to reflect the currently selected item.



Close-Up View of Items

Some items, after being picked up and placed in your inventory, can (and must) be looked at in a close-up view. This way you can examine an item closer and perhaps find a clue or an additional item that will help you solve a puzzle. To check if this applies to a specific item, left-click the item in your inventory and then left-click the eye icon.

A close-up view is like looking through April's eyes, and it means that you may interact more closely with an item, like examining parts of it, or pulling at bits of it, winding something up, or using another inventory item with the item. This close-up view appears in your Game Window, and functions like a normal scene, except that April doesn't appear, and you can't walk around. Move the cursor around interesting parts of the picture to detect hotspots that you can interact with. To exit a close-up view, move the cursor to the edges of the screen, and left-click when the cursor turns red. You may access your inventory while in close-up view, and you can also use other items with the item in your close-up view, if necessary.

Talking to Other Characters

Talking to people is a crucial part of the game, and unless April takes time out to engage in conversations with both friends and strangers, she'll have a hard time getting anywhere.

Conversations are usually initiated in one of three ways:

- Clicking on a character and choosing the "mouth" icon.
- In certain situations, conversations start automatically when April meets another character.
- Sometimes, using an item on a character (see "The Inventory") initiates a conversation, or causes April to ask about that specific item.

Once the conversation has begun, you won't be able to move April around or click on objects in the Game Window. The cursor will remain "broken" (or non-interactive) when April or the other character is speaking. When the time comes for you to choose April's response, the cursor becomes active again, but only in the Dialogue Window. Passing the cursor over the various dialogue choices highlights each choice. Clicking on a choice prompts April to speak the chosen sentence out loud. Alternatively, you can use the number keys (1, 2, 3, etc.) to choose a reply, or the arrow keys on your keyboard to scroll up and down and the Enter key to choose a reply. Sometimes, there are more choices available than can fit into the Dialogue Window at once. If this is the case, arrows will point up and down on the left-hand side of the Dialogue Window. Left clicking on an arrow scrolls the choices up or down. You may also use the arrow-keys on your keyboard to scroll up and down, and the Enter or number keys to select a question or reply.

If you don't want to hear what a character is saying, or you've heard a particular response before, you can press the Escape button or right-click in the Dialogue Window. This skips the current reply and jumps ahead to the next one. Be careful, however; it's often crucial that you pay attention to what the characters are saying. If you miss out on something by accident, however, you can always read through a previous dialogue in the Conversation Log (see the "Diary Menu" section of this manual for instructions).

Every conversation in the game has subtitles, and if you have trouble hearing or understanding what the characters are saying, you may want to turn them on. You can do this by either:

- Pressing the F9 key, or;
- Accessing the Game Settings screen and checking the box next to "Subtitles".

For instructions on how to access the Game Settings screen while playing the game, please see the "Diary Menu" section of this manual.

One last tip: What you say to a character will affect that person's responses towards you, so think carefully before speaking! While choosing the "wrong" line of dialogue won't end the game, it might make things a little more difficult. But then again, saying things you wouldn't say in real life is part of the fun, so don't be afraid to take risks!

Displaying Exits

Sometimes it may be a little difficult for first-time players to locate all the exits from a certain location. To help the player out, the game has a little built-in "cheat" that may come in handy:

- Press the X key on your keyboard to display all currently enabled exits. Press the X key again to turn off the exit indicators.

The following icons indicate the possible exits:



This indicates the presence of an exit directly below the icon. Move your cursor below this icon until it turns red. Left-click to make April walk towards the exit, or double-click to make her run.



These two icons indicate the presence of an exit off-screen to the left and to the right. The current location is a scrolling location, and the player must move to the left or right before the exit comes on screen, at which point the indicator will change to indicate the new position of the exit.



Looking Through Aprils Eyes

Once in a while, by clicking on an object or by entering a specific location, the view presented in the Game Window may change from a "third-person" view to a "first-person" view. In other words, instead of seeing April from the position of an outside observer you will be looking through her eyes. This may occur when examining an item in your inventory (see "The Inventory" for more information), or looking at an item in the current location. A close-up view will allow you to examine an object in more detail, to locate hidden items and information, and

perhaps even allow you to operate machinery. While in close-up view, you may use items as usual (see "The Inventory"), and the game may be saved. To exit a close-up view, move the cursor to the edges of the screen. When it turns red, click the left mouse-button, and you will be returned to the previous scene.

Using Maps

Sometimes, when April leaves a certain location, or looks at a map in the Game Window (like the subway map inside the train), a full-screen map will appear, containing a number of icons representing available locations. Left-click a location icon to travel to that location. Move the cursor to the edge of the screen to exit the map and return to the previous location.

Saving and Loading the Game

The quickest way to save or load a game is to press the F2 key to save, and the F3 key to load. Alternatively, you may access the Diary Menu by clicking the diary icon in your Toolbar (see "The Toolbar and Game Windows"), or by pressing the F1 key, and choosing Save or Load from that menu. To find out more about the Diary Menu, please refer to the "Diary Menu" section of this manual.

To save a game, access the save menu (as described above) and left-click either an open slot or a previously used slot. Each player has 99 save-game slots available. If you choose to save your game in a previously used slot, that save-game will be deleted. If all the slots on the current page are filled, click the "Next" icon at the bottom right of your screen. Once you've filled all 99 save-game slots, you will need to start saving on top of previously saved games. Each saved game will display a little thumbnail of your current location in the game, and will be labelled with the name of the current chapter as well as the time and date when your game was saved.

If, when saving the game, you get an error message telling you that your hard-drive is full, and that you need to free up some space, do the following: Press and hold the ALT key on your keyboard, and then press the TAB key. You will be returned to your desktop. Free up some space on the hard-drive where **The Longest Journey** is installed (usually the C: drive) by deleting non-essential files, and then return to the game by either pressing ALT and TAB again, or clicking on the game's minimized window at the bottom of the screen. You may now try to save your game again.

To load a game, access the load menu (as described above), and left-click the thumbnail of the game you want to load. If the game you want to load is not on

the current save-game page, left-click either the "Back" or "Next" icons at the bottom of the screen. Loading a game will end your current game.

Helping You Out

Adventure games may, at times, be difficult games to play, especially if you miss out on an important piece of information. To help you out a little bit, we've added a few helpful features to the game. Two of these, the Conversation Log and April's Diary, are described in the chapter called "The Diary Menu". The third helpful hint is something called the Hint Sound. The Hint Sound is a sound-effect that plays whenever something very important happens, or when a new location has been unlocked and is made accessible via one of the many maps in the game. Keep your ears open!

Quitting the Game

There are a number of ways to end your game and return to either the Game Menu or to your desktop:

- Moving your cursor to the top of the screen and left-clicking the Exit icon to the far right of your Toolbar returns you to the Game Menu;
- You may also press the F10 key to go back to the Game Menu;
- Pressing the ALT and X, or ALT and Q keys at the same time quits the game to the desktop;
- Access the Diary Menu (by pressing F1, or left-clicking the Diary icon in the Toolbar), and choose "Quit Game" to exit to the Game Menu.

Every time you choose to quit the game you will be reminded that your current game will be forfeited. Choose "Cancel" if you haven't saved your game recently and you wish to be able to continue playing from the point you're currently at at a later time. See the section "Saving and Loading the Game" (page 20). Choose "Okay" to forfeit your current game.

Keyboard Shortcuts

| | |
|--------|---|
| F1 | Diary Menu |
| F2 | Save game |
| F3 | Load game |
| F4 | Conversation Log |
| F5 | April's Diary (initially disabled) |
| F6 | Video Replay |
| F7 | Game Settings |
| F8 | Save a screenshot to your local game directory |
| F9 | Toggle subtitles on and off |
| F10 | Quit game and returns to main menu |
| A | Cycle back through inventory cursor items |
| S | Cycle forward through inventory cursor items |
| I | Inventory |
| X | Display all exits on current location |
| Alt+X | Exit to your desktop (also alt+Q) |
| P | Pause the game |
| Up/T | Scroll up in dialogues and in your inventory |
| Down/L | Scroll down in dialogues and in your inventory |
| ← | Select currently highlighted dialogue choice |
| 1 - 9 | Select a dialogue choice |
| ⏮ | Skip video sequence or current line of dialogue |



4 The Diary

Accessing the Diary Menu

Accessing the Diary Menu while playing the game is done in one of two ways:

- Clicking the Diary icon in the Toolbar (see "The Toolbar and Game Windows"), or;
- Pressing the F1 key.

The following options are now available:

- **Save Game.** Enter the Save Game screen.
- **Load Game.** Enter the Load Game screen.
- **Game Settings.** Adjust the in-game settings.
- **Conversation Log.** Read a transcript of all the conversations April has had.
- **April's Diary.** Initially disabled. This is where April writes down the important things that happen to her.
- **Video Replay.** Replay the film sequences you've seen so far.
- **Quit Game.** Quits the current game and returns you to the Game Menu.

Clicking any of the above options closes the current menu and opens a new screen. To return to the game, either click the Return to Game icon in the top left of the screen, or press the Escape button at any time.

Save/Load Game Screens

It's crucial that you save your game at regular intervals while playing. Even though April cannot die, your computer could, and I'm sure you'd not wish for your last four hours of playing time to have been wasted!

To save a game, click the Save Game option on the Diary Menu screen, or press the F2 key while you're playing the game. Be aware that it's impossible to save the game while you're in the middle of a conversation, when you're watching a video sequence, or when the cursor is "broken" (non-active).

Each player (identified by Player Name on the Hardware Set-up screen that appears every time you start the game) has 99 save-game slots. If necessary, you can overwrite a previously saved game. When removing the game from your system you're given the choice of keeping your saved games or deleting them. If you plan on playing **The Longest Journey** again, you should keep your save games.

Please see the section called "Saving and Loading the Game" (page 20) in this manual for more instructions.

Game Settings

See the "Game Settings" section in "Part One: Getting Started".

Conversation Log

This is a very useful feature that guarantees you'll never miss out on important information. All of April's conversations with other characters are transcribed and sorted according to chapter and character. Accessing this screen allows you to click through the dialogues and read through the conversations. Use the "Next" and "Back" icons at the bottom of the screen while reading a conversation to page back and forth. Press the "Diary Menu" icon to return to the Diary Menu, or the "Index" icon at the bottom of the screen to return to the index of conversations.

April's own comments and descriptions of items and characters that she looks at are not transcribed in the conversation log. Conversations between two other characters are usually not transcribed either. Generally, though, everything you need to remember is available here.

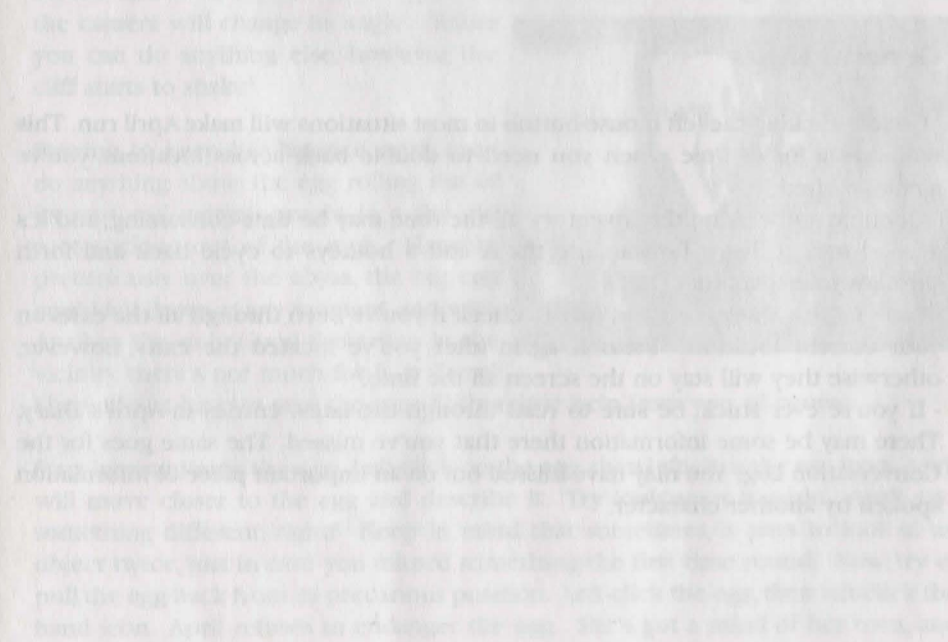
Aprils Diary

This section is initially disabled (you will have to figure out how to enable it on your own!), but once available, you may access a log of the important events throughout the game, as told by April in her own words. Every time something vitally important happens in the game, and April decides to write about the event in her diary, a distinct sound will play and the diary icon in the Toolbar will flash. A bookmark will also appear on the diary icon until you've read whatever new information is available. If you ever get stuck, or return to the game after not having played it for a while, it's a good idea to read through April's diary.

The diary also contains entries written by April before the events that take place in the game. She writes about how she ended up in Newport, living in a small apartment and attending the Venice Academy of the Visual Arts. It's a good idea to read through these entries as well, even though it's not very polite to read other people's diaries. April probably won't mind, though.

Video Replay

The video replay screen contains a list of all the video sequences you've seen so far. Left clicking on a title plays the video. Click the "Diary Menu" icon to return to the Diary Menu.





S Walkthrough

Warning!

The following few pages will describe in detail how to play through the Prologue of **The Longest Journey**. If you wish to try and play on your own (and we do suggest you at least *try*), then skip this section, or refer to the more general hints listed below.

General Hints

- Double-clicking the left mouse-button in most situations will make April run. This will save a lot of time when you need to double back across locations you've already visited.
- Opening and closing the inventory all the time may be time-consuming, and it's a good idea to learn how to use the A and S hotkeys to cycle back and forth through your inventory.
- Pressing the X key is a good way to check if you've been through all the exits on your current location. Press X again after you've located the exits, however, otherwise they will stay on the screen all the time.
- If you're ever stuck, be sure to read through the latest entries in April's Diary. There may be some information there that you've missed. The same goes for the Conversation Log. You may have missed out on an important piece of information spoken by another character.

How to Play Through the Prologue

After watching the introductory sequence, we find ourselves inside April's dream. A vast, unfamiliar landscape lies before us, and the sound of distant thunder rolls across the alien hills and misty valleys.



Start by moving the cursor across the screen to see what you can interact with, and where the hotspots and exits are located. It's a good idea to do this in every new location you come across. Missing out on something important may prevent you from moving to the next scene or chapter. Likewise, if you're ever stuck, take some time out to examine your environment. Sooner or later you'll find an important clue that you've missed.

But back to the puzzles at hand. After you've gazed around at the beautiful scenery, and tried clicking on a few things like the sun, the big, ominous cloud, and April herself, you're ready to go exploring. Move the cursor to the right on the screen, and click the left mouse button. April will start walking, and after a while the camera will change its angle. Before you can do anything else, however, the cliff starts to shake!



Striving to keep her balance, April can't do anything about the egg rolling out of its nest and getting caught in a dry old root sticking out of the rock. Hanging precariously over the abyss, the big egg could fall down at any moment, and with April as the only Good Samaritan in the vicinity, there's not much for it, is there? She will just have to save the egg. With a little help from you, of course.

Start by examining the egg. Left-click on the egg, then left-click the eye icon. April will move closer to the egg and describe it. Try looking at it again. April says something different, right? Keep in mind that sometimes, it pays to look at an object twice, just in case you missed something the first time round. Now, try to pull the egg back from its precarious position. Left-click the egg, then left-click the hand icon. April refuses to endanger the egg. She's got a mind of her own, and

you'd better get used to it. She won't always do what you had in mind!

Okay, so April can't carry the egg back into the nest herself. What now? Try exploring a little more. Move to the right of the screen, and the camera will change again to show a stream running down the side of the mountain. Take a look at the stream, then at the surrounding rock. Hmm, something's happened here – but what exactly?



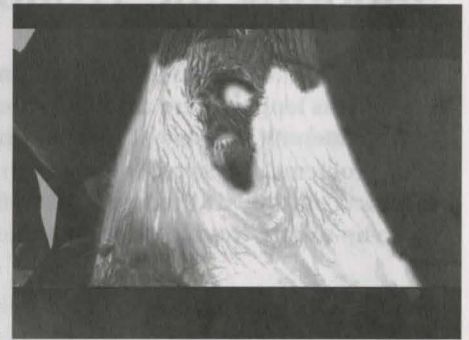
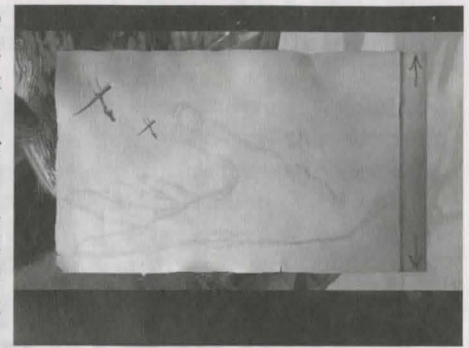
Go left and you'll be back in the previous camera angle. There's what looks like a nest next to the tree. Left-click the nest, and then click the eye icon to take a closer look at it. Apparently, the nest contains some scales. Let's try to pick up one of them. Left-click the nest again, then click the hand icon. April bends down and picks up a large scale. Nice souvenir. Now, take a closer look at the scale. Click the right mouse-button to open the inventory, then left-click the scale and choose the eye-icon. April will describe the scale.

At this point it might be a good idea to take a closer look at the withered old tree on the cliff. Left-click the tree. April will describe it. Nothing peculiar, just an old, dying tree. Take a closer look at the tree; there's a dry branch sticking out of it. Left-click the branch, then left-click the hand icon. April walks forward and breaks the branch off, not expecting the tree to complain much at all, which, to her surprise, it actually does! Well, to be honest, it's not really the tree talking, but a Wood Spirit, and since this is your first conversation in the game pay close attention to how it works.



At first, April and the Wood Spirit trade lines without you having to do anything at all. After a little while, however, several dialogue choices appear, and you must choose which one you want April to say. Don't worry, though, as you have to go through most of them right now to find out what to do next. Left-click the dialogue choices in the Dialogue Screen until the dialogue ends.

You've now been given a lot of hints as to what to do next. The tree is dying, and you need to find a way to water it so that it can bring the egg back into its nest. Let's take a look at what we have in our inventory. Click the right mouse-button. You'll see a dry branch and a scale in your inventory. Remember the stream running down the face of the cliff? Close your inventory and go back to that location. Notice how the water just misses the soil where the tree grows? How can you lead the water back into the soil and save the tree? Open your inventory and left-click the scale. Click the hand icon. The cursor will change into a smaller version of the item. Move the cursor item on top of the branch. The cursor begins to flash, signifying the fact that the two items can be used together. Click the left mouse-button, and voila! April builds a makeshift funnel. The branch and scale items are no more, but instead you got a new item. Pick up the funnel (left-click the item then choose the hand icon) and move the cursor outside the inventory screen. After about a second, the inventory screen closes down. Move the cursor item on top of the stream. The cursor should begin to flash. Left-click, and April moves forward and places the funnel right beneath the stream. A short video sequence will play, showing you what happens.



Return to the previous location and talk to the tree. The scene will now play itself out. And don't be surprised if you get to meet the egg's mother. Remember, it's all just a dream.

Isn't it?



6 Troubleshooting

Shooting the Trouble

Even though we've tried our best to bring you as bug-free an experience as possible, as long as there are PCs in the world, there will be problems. Here we've tried to identify as many of them as possible and to give you possible solutions to your problems. We strongly suggest that you also read **the Read Me file** which is included on the CD (and accessible from the Launcher utility). This includes a more up-to-date troubleshooting section.

Common Problems

Q: Help, I'm unable to install the game!

A: If the Launcher utility doesn't automatically pop up after you insert Disc One in your CD-ROM drive, you can run it directly from the CD. Double click the My Computer icon on your desktop, and double click on the CD-ROM icon. Double click the launcher.exe file in the root directory. If this doesn't work, please check that your CD-ROM drive works with other CDs.

Q: I can't click the "Play" option in the Launcher after installing the game; or the game tells me that one or more files are missing and that I need to reinstall the game!

A: The installation might not have completed successfully, or your registry file may be corrupt. Try to re-install the game. If this doesn't work, try uninstalling the game completely and installing it again on a different hard drive (e.g. your D: drive).

Q: I'm running the game with hardware-rendering enabled. Characters look weird, and/or textures are missing. What can I do to fix this?

A: Your video-card does not properly support hardware rendering. Try running the game using software rendering, or get a new video-card that supports hardware acceleration. You may also need updated drivers for your video-card. Contact your vendor or visit their web-site for more information.

Q: The mouse-pointer leaves trails on the screen and/or the graphics are garbled. What's up with that?

A: This is most likely due to an incompatible graphics-card driver, or incorrect settings. Update your drivers. We have encountered problems like this with cards that allow VSYNC to be disabled. Access your video-card's advanced settings and make sure that the check-box labelled "Wait for VSYNC" is enabled.

Q: My girlfriend/boyfriend left me and took all my records. What to do?

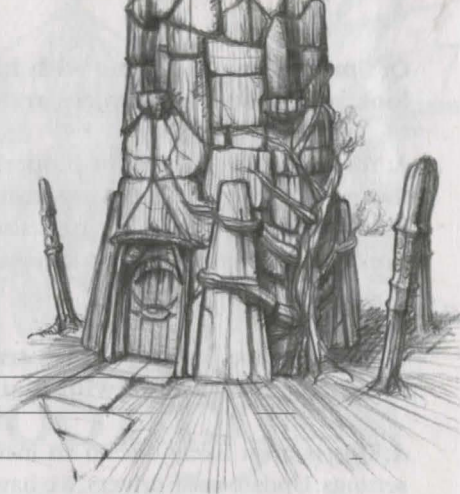
A: Play **The Longest Journey**. It heals all wounds, and makes you forget.

The Read Me File

For last-minute additions to the Troubleshooting section, please read the ReadMe.txt file by clicking the appropriate button in the Launcher utility. The latest version of this file is also available from the official web-site.

The Web Site

If you're having trouble, and you have an Internet connection, please check the official **The Longest Journey** web site at <http://www.longestjourney.com/> for updates, patches and general assistance.



Contact

Please study the Read Me text file enclosed on the CD (the latest version is also always available from the official TLJ homepage) before contacting us.

Funcom

Funcom's main page:
<http://www.funcom.com/>

The Longest Journey official homepage:
<http://www.longestjourney.com/>

This site has a FAQ, the latest version of the Read Me file, and a bulletin board dedicated to TLJ.

Technical support and general feedback:

e-mail: tlj@funcom.com



INTRODUCTION
 Ian Ove Hildred
 Martin Laine
 David Johnson

INSTALLATION
 Peter Blomquist
 David Johnson
 Ian Ove Hildred

THE LONGEST JOURNEY
 Ian Ove Hildred
 Martin Laine
 David Johnson

THE LONGEST JOURNEY
 Ian Ove Hildred
 Martin Laine
 David Johnson

WANDA
 Martin Laine
 Kurt Sletten
 David Johnson

WANDA
 Martin Laine
 Kurt Sletten
 David Johnson

WANDA
 Martin Laine
 Kurt Sletten
 David Johnson

WANDA
 Martin Laine
 Kurt Sletten
 David Johnson

WANDA
 Martin Laine
 Kurt Sletten
 David Johnson

WANDA
 Martin Laine
 Kurt Sletten
 David Johnson

WANDA
 Martin Laine
 Kurt Sletten
 David Johnson

WANDA
 Martin Laine
 Kurt Sletten
 David Johnson

Credits

And now for the most important part of this manual: A list of all the people who helped to make this game possible. We hope you'll find it interesting.

PRODUCER
 Ian Ove Hildred

LEAD DEVELOPER
 David Johnson

WRITER
 Ian Ove Hildred

ART DIRECTOR
 David Johnson

LEAD PROGRAMMER
 Ian Ove Hildred

PROGRAMMER
 Ian Ove Hildred

PROGRAMMER
 Ian Ove Hildred

PROGRAMMER
 Ian Ove Hildred



8 Credits

And now for the most important part of this manual: A list of all the people who toiled in dank, humid cellars for years and years to bring you **The Longest Journey**:

Funcom

PRODUCER

Ragnar Tørnquist

LEAD DESIGNERS

Ragnar Tørnquist
Didrik Tollefsen

WRITTEN BY

Ragnar Tørnquist

ART DIRECTOR

Didrik Tollefsen

LEAD PROGRAMMER

Morten Lode

PROGRAMMERS

Morten Lode
Rune Espeseth
Jan-Ove Haaland
Johan Braanen
Bjørn-Eirik Larsen
Audun Tørnquist



LAIDBACK

Jan-Ove Haaland
Morten Lode
Johan Braanen

INSTALLER AND LAUNCHER

Rune Espeseth
Audun Tørnquist
Bjørn-Eirik Larsen

3D STUDIO PLUG-INS

Johan Braanen
Kurt Skauen

TRANSLATION TOOL

Rune Espeseth
Morten Lode

RANDY

Martin Amor
Kurt Skauen
Jesper Hansen
Tore Lode
Jørgen Tvedt
Frank Stevensen
Fabian Gonzalez
Andreas Bromirski
Lasse Staff Jensen

SANDY

Karol Slanina

CHARACTER ANIMATION TOOLKIT (CAT)

Jesper Hansen
Kurt Skauen

BACKGROUND ARTISTS

Øyvind Jernskau
Didrik Tollefsen
Tom Gjerde
Karsten Hammer Hansen
Kjetil Hjeldnes
Vebjørn Strømmen
David Michalczyk
Dennis Hansen
Christian Morgan Enger

CHARACTER ARTISTS
Christian Morgan Enger
Iwan Peter Scheer

FACIAL ANIMATIONS
Anders Finér

CHARACTER ANIMATION
Iwan Scheer
Lars-Petter Anfinssen
Renate Andersen

FULL-MOTION VIDEO SEQUENCES
Didrik Tollefsen
Christian Morgan Enger
Renate Andersen
Thorolf Tønjum
Rune Spaans
Iwan Scheer
Øyvind Jernskau

AUDIO DIRECTOR
Bjørn Arve Lagim

MUSIC COMPOSED AND PERFORMED BY
Bjørn Arve Lagim

SOUND DESIGN
Tor Linløkken

ADDITIONAL MUSIC
Tor Linløkken
Morten Sørlie
Didrik Tollefsen

SPEECH EDITING AND PROCESSING
Tor Linløkken
Bjørn Arve Lagim
Morten Sørlie

ADDITIONAL DESIGN
Gaute Godager
Henning Solberg
Øyvind Jernskau

VOICE DIRECTOR
Ragnar Tørnquist

CASTING COORDINATOR
Synøve Lund

RECORDING ENGINEER
Frank "Paco" Kulaga

QUALITY ASSURANCE MANAGER
Henning Solberg

TESTING
Henning Solberg
Steve Reberg
Alf Yngve

LOCALIZATION COORDINATOR
Nils Håkon Nordberg

PRESIDENT
André Backen

VICE PRESIDENT OF PRODUCTION
Gaute Espeland

MARKETING
Tomas Schreiner
Ulf Kristiansen
Marit Lund

WEB-SITE DESIGN
Tommy Svensson

MANUAL- AND BOX-DESIGN
Geir Haugen
Didrik Tollefsen

MANUAL WRITTEN BY
Ragnar Tørnquist

MOTION CAPTURE ACTORS
Gry Stordahl
Didrik Tollefsen

SPECIAL THANKS TO
Tommy Strand
The Aztec team
Everybody at Robert Martone Recording, New York

Cast of Characters

April Ryan:
SARAH HAMILTON

Cortez / Adrian:
LOUIS AGUIRRE

Crow / Actor Cop / Vanguard Receptionist:
ROGER RAINES

The Wood Spirit / Tobias Grensret / The Ancient Dragon:
RON FOSTER

The White Dragon / The Maerum Queen:
NICOLE ORTH-PALLAVICINI

Old Woman / Alatien Teller:
HELEN STENBORG

Zack Lee / Captured Banda / Stickman Woody / Thin Repairman:
RON GALLOP

Emma / Young Alatien Woman / Female Visitor:
JULIA MURNEY

Charlie:
MARK ANTHONY HENRY

Fat Repairman / Lost Banda / Cups Handler:
VICTOR WARREN

Young April / Alatien Child:
ANDREA BOWEN

Burns Flipper / Lorhan:
ANDREW DONNELLY

Gordon / Male Visitor:
KEVIN MERRITT

Roper Klacks / Brian Westhouse / Jacob McAllen:
RALPH BYERS

FACT Voice / Colonial Representative / Mickey:
STEPHANIE GARRY

Minstrum Yerin / Elder Banda / Stickman Wick / Old Alatien Man:
PETER FERNANDEZ

Father Raul / Q'aman / Alatien Castle Watch / Vanguard Agent:
FRANK RIVERS

Fiona / Tun Luiec:
FRANCESCA LONGRIGG

Innkeeper / Reporter:
CORDIS HEARD

Freddie Melon / Captain Nebevay / April's Father / Cop:
JOHN HENRY COX

Dark People's Emissary / Abnaxus / Maps Merchant:
JEFF MELLER

Frank Minnelli / Stanley / Stickman Willow / Old Sailor:
MADISON ARNOLD

Front Desk Sergeant / The Gribbler / April's Mom:
MARY ELAINE MONTY

YOU SHOULD CAREFULLY READ THE FOLLOWING END USER LICENSE AGREEMENT BEFORE INSTALLING THIS SOFTWARE PROGRAM. THIS AGREEMENT DESCRIBES THE TERMS ON WHICH FUNCOM B.V. ("FUNCOM") OFFERS YOU TO PLAY THE LONGEST JOURNEY COMPUTER GAME (THE "GAME"). BY PRESSING THE "I ACCEPT" BUTTON, YOU ACCEPT THE TERMS AND CONDITIONS BELOW. BY PRESSING THE "I DECLINE" BUTTON, YOU DECLINE OUR OFFER, IN WHICH CASE YOU SHOULD RETURN THE LONGEST JOURNEY CD-ROM TO FUNCOM.

If you have any questions regarding these terms and conditions, please contact customer service at e-mail support@funcom.com <<mailto:address@funcom.com%5D>>

1. By clicking the "I Accept" button, you represent that you are accepting this Agreement.
2. To play the Game, you must possess a THE LONGEST JOURNEY game CD-ROM (the "CD-ROM"), which includes software required for the Game ("the Software"). This Agreement does not entitle you to any subsequent releases of the Software, nor to any expansion packs or similar ancillary products. You understand that we may update or otherwise enhance the Software at any time and in doing so incur no obligation to furnish such updates to you pursuant to this Agreement.
3. We may amend this Agreement at any time in our sole discretion. Such amendments shall be effective whenever we make the notification available for your review.
4. We may terminate this Agreement (including your Software license) immediately and without notice if you breach this Agreement or infringe any third party intellectual property rights.
5. Subject to the terms of this Agreement, we hereby grant to you a non-exclusive license to use the Software solely in connection with playing the Game on your own computer. You may not copy (except to make one necessary back-up copy), distribute, rent, lease, loan, modify or create derivative works, adapt, translate, perform, display, sublicense or transfer software. You may not copy any of the written materials accompanying the CD-ROM. You may not reverse engineer, disassemble or decompile the Software except to the extent that this restriction is expressly prohibited by applicable law. The Software may contain license management software that restricts your use of the Software.
6. We and our suppliers shall retain ownership of all intellectual property rights relating to or residing in the CD-ROM, the Software and the Game. The Software is a commercial item.
7. You may not use any third party software to modify this Software. You may not use our intellectual property rights contained in the Game or the Software. You may not sell or auction any Funcom characters, items, coin or copyrighted material.
8. Funcom can (and you authorize us to) disclose any information about you to private entities, law enforcement or other government officials as we, in our sole discretion, believe necessary or appropriate to investigate or resolve possible problems or inquiries. Furthermore, if you request any technical support, you consent to our remote access and review of the computer you load the Software onto for purposes of support and debugging. You agree that we may communicate with you via email and any similar technology for any purpose relating to the Game, the Software and any services or software which may in the future be provided by us on your behalf. Solely for the purpose of patching and updating the Game, you hereby grant us permission to (i) upload Game file information from the Funcom directory and (ii) download Game files to you.
9. WE PROVIDE THE CD-ROM, THE SOFTWARE, THE GAME AND ALL OTHER SERVICES "AS IS". WE AND OUR SUPPLIERS EXPRESSLY DISCLAIM ALL WARRANTIES OR CONDITIONS OF ANY

KIND, EXPRESS, IMPLIED OR STATUTORY, INCLUDING WITHOUT LIMITATION THE IMPLIED WARRANTIES OF TITLE, NONINFRINGEMENT, MERCHANTABILITY AND FITNESS FOR A PARTICULAR PURPOSE.

Without limiting the foregoing, we do not ensure continuous, error-free, secure or virus-free operation of the CD-ROM, the Software or the Game. Some jurisdictions do not allow the disclaimer of implied warranties, so the foregoing disclaimer may not apply to you. This warranty gives you specific legal rights and you may also have other legal rights which vary from jurisdiction to jurisdiction.

10. IN NO EVENT SHALL WE, OUR PARENT, OUR AFFILIATES OR OUR SUPPLIERS BE LIABLE TO YOU OR TO ANY THIRD PARTY FOR ANY LOST PROFITS OR SPECIAL, INCIDENTAL OR CONSEQUENTIAL DAMAGES (HOWEVER ARISING, INCLUDING NEGLIGENCE) ARISING OUT OF OR IN CONNECTION WITH THE GAME, THE CD-ROM, THE SOFTWARE OR THIS AGREEMENT. OUR LIABILITY TO YOU OR ANY THIRD PARTIES IS LIMITED TO \$100.00 (One Hundred U.S. Dollars). Some jurisdictions do not allow the foregoing limitations of liability, so they may not apply to you.
11. You shall comply with all applicable local, state, national and international laws and regulations regarding your use of the Software and your playing of the Game. Without limiting the foregoing, you may not download, use or otherwise export or re-export the Software in full compliance with all applicable laws and regulations.
12. Your use of the Software and your playing the Game constitutes your agreement to defend, indemnify and hold harmless Funcom and its affiliated companies, employees, contractors, officers and directors from any claim or demand, including reasonable attorneys' fees arising out of your use or misuse of the Software and your playing the Game.
13. This Agreement is governed in all respects by the laws of the State of New York as such laws applied to agreements entered into and to be performed entirely within New York between New York residents. The UN Convention on Contracts for the International Sale of Goods is expressly disclaimed. Both parties submit to personal jurisdiction in New York and further agree that any cause of action relating to this Agreement shall be brought in a court in New York County, New York. If any provision of this Agreement is held to be invalid or unenforceable, such provision shall be struck and the remaining provisions shall be enforced. Our failure to act with respect to a breach by you or others does not waive our right to act with respect to the subsequent or similar breaches. You may not use, copy, modify, sublicense, rent, sell, assign or transfer your rights or obligations in this Agreement except as expressly provided in this Agreement. Any assignment in violation of this Agreement is void, except that you may transfer your User Licence to another person provided that person accepts the terms of this Agreement. This Agreement sets forth the entire understanding and agreement between us and you with respect to the subject matter hereof. Except as provided above, this Agreement may not be amended except in a writing signed by both parties.
14. All services hereunder are offered by Funcom B.V., a corporation organized under the laws of The Netherlands, with its mailing address at P.O. Box 4753, CH-8022 Zurich, Switzerland. If you are a New York resident, you may have this same information emailed to you by sending a letter to the foregoing address with your email address and a request for this information.

Text Box: NYC: 137590 v02 10/19/2000The New York State Consumer Protection Board may be contacted in writing at 5 Empire State Plaza, Suite 2101, Albany, New York 12223-1556 or by telephone at 518-474-8583.



Copyright © 2000
Funcom
All rights reserved