

J K L M N O

52  
53  
54  
55  
56  
57



THE GREAT OCEAN

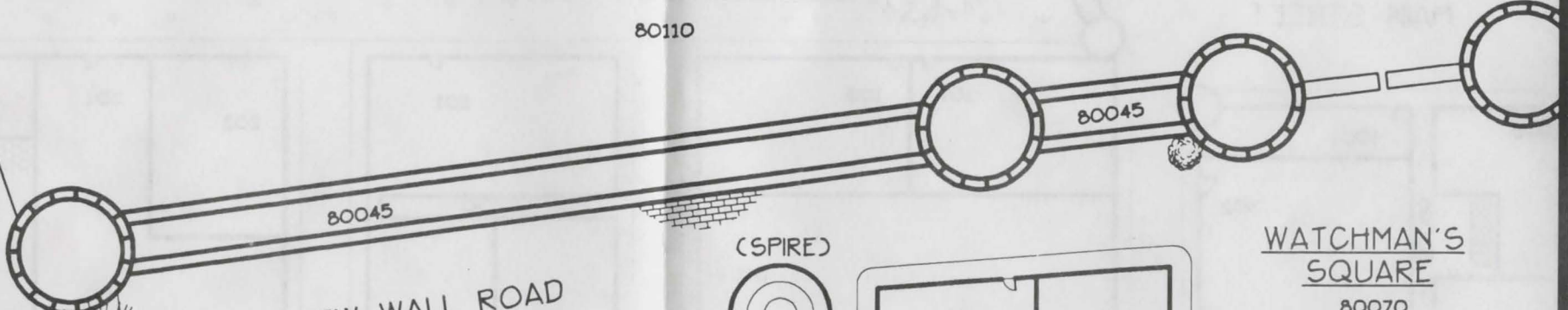
THE GREAT OCEAN

# OUTER CITY

80110

THE GREAT OCEAN

80115



NEW WALL ROAD

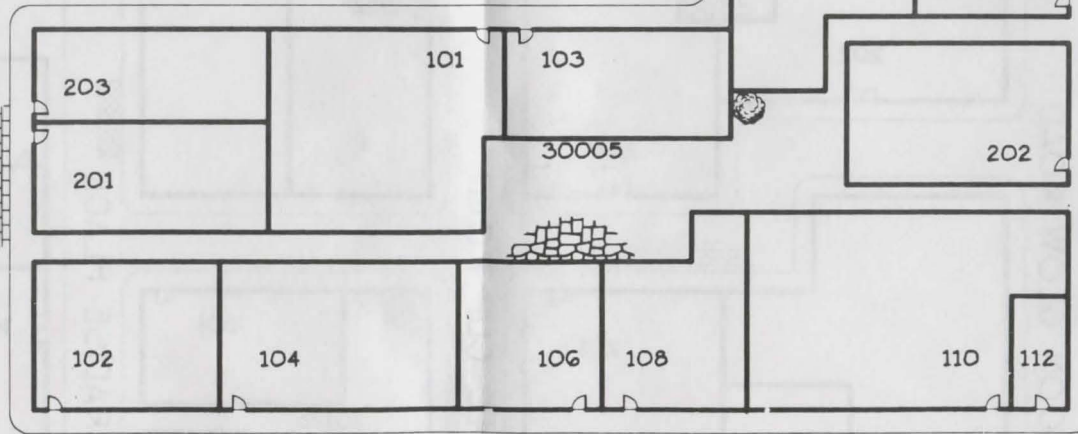
(SPIRE)



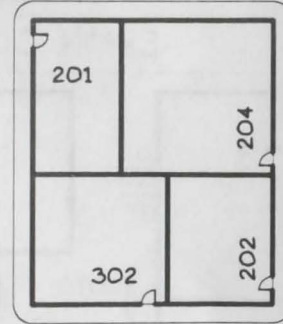
WATCHMAN'S SQUARE

80070

WORLD VIEW



AVENUE OF FALSE IDOLS



PALM WALK

SIDE STREET



J53

J54

J54



J53



J53

J53

WORLD VIEW

SIDE STREET

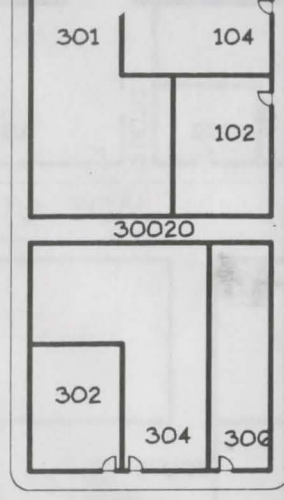
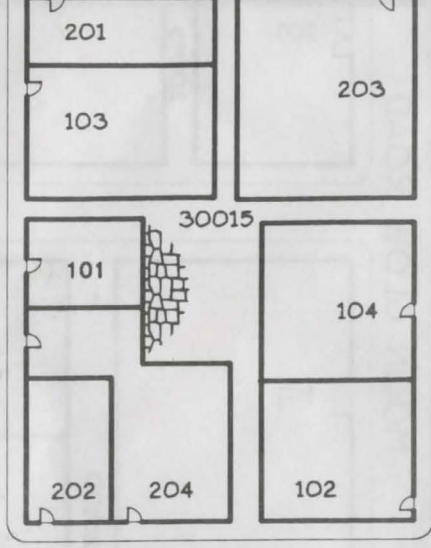
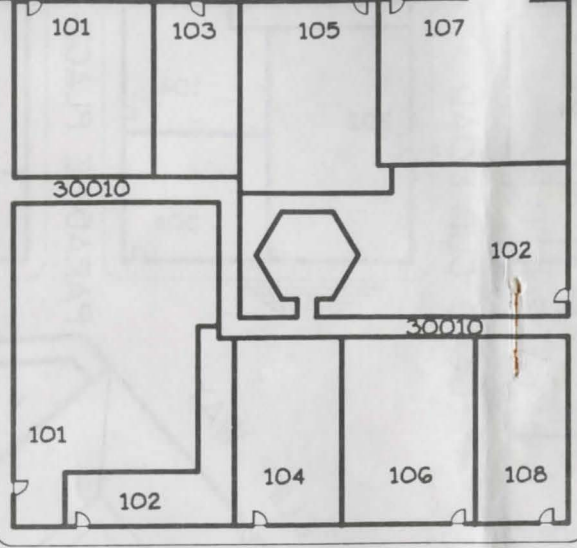
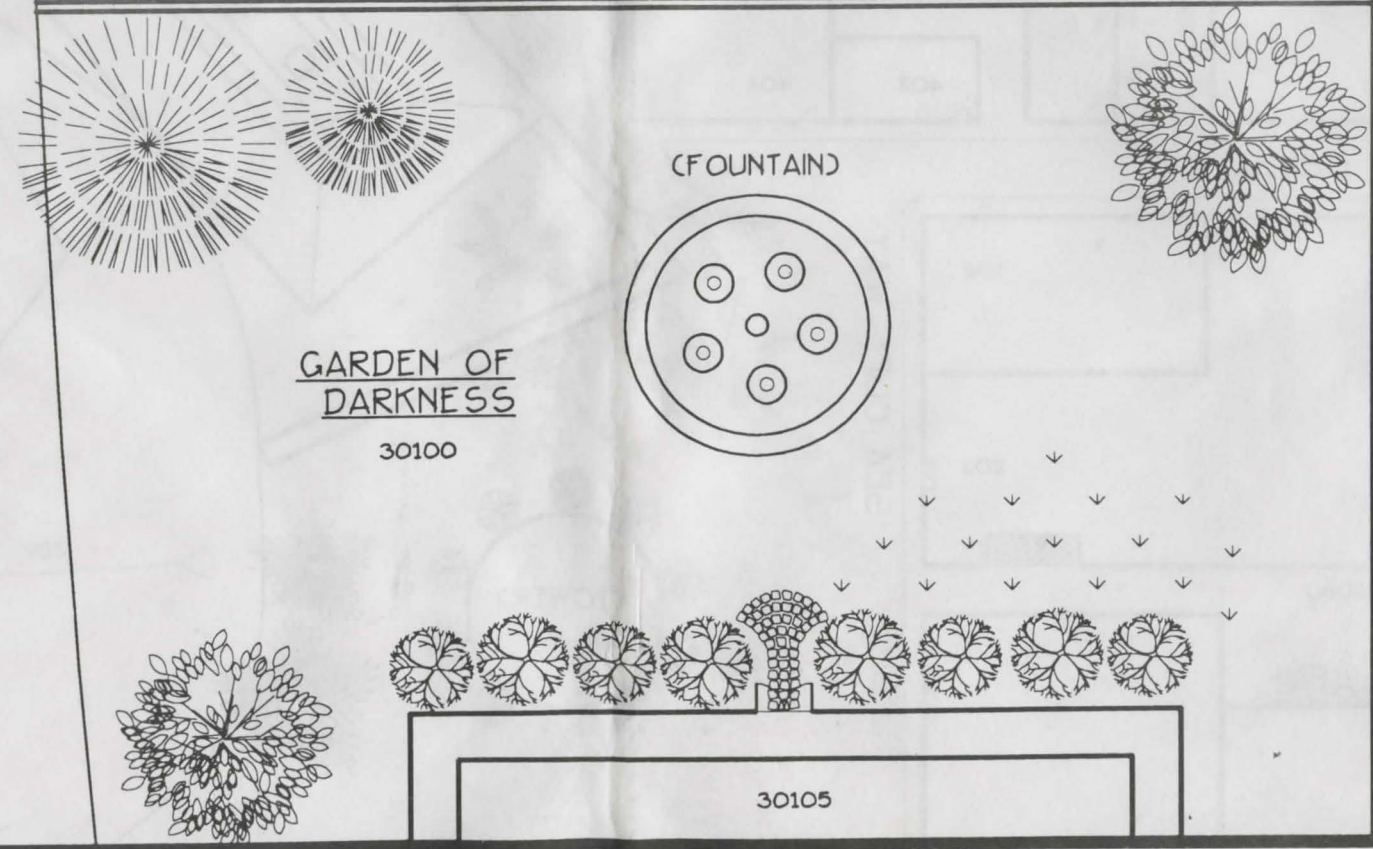
AVENUE OF FALSE IDOLS

AVENUE OF BLACK WHISPERS

THE TEMPLE OF SETH  
C702 FLAME STREET

THE GREAT OCEAN

80115



J54

J55

J55

J54

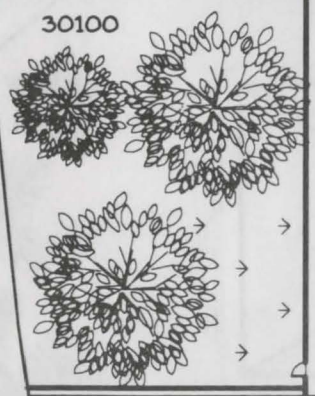
J54

J54

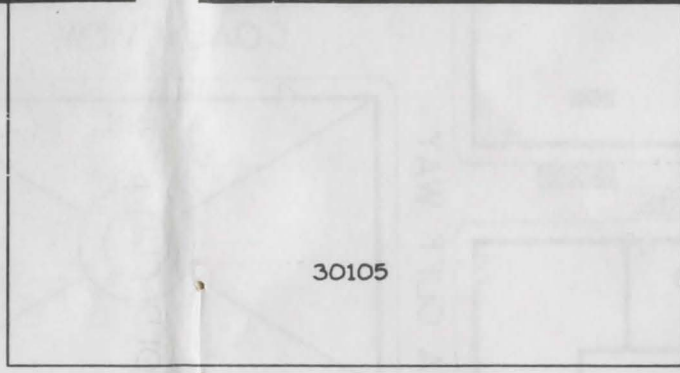
GOLDTREE ENTERPRIS

Copyright (1993)

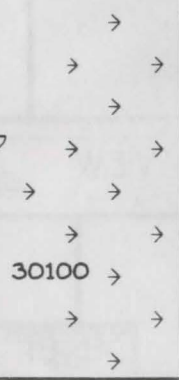
30100



30105



30100

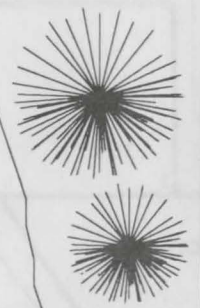


THE TEMPLE  
OF SETH  
(702 FLAME STREET)

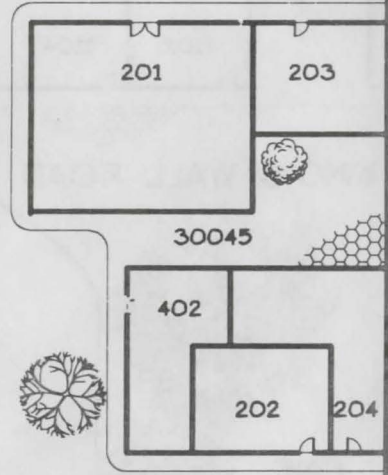
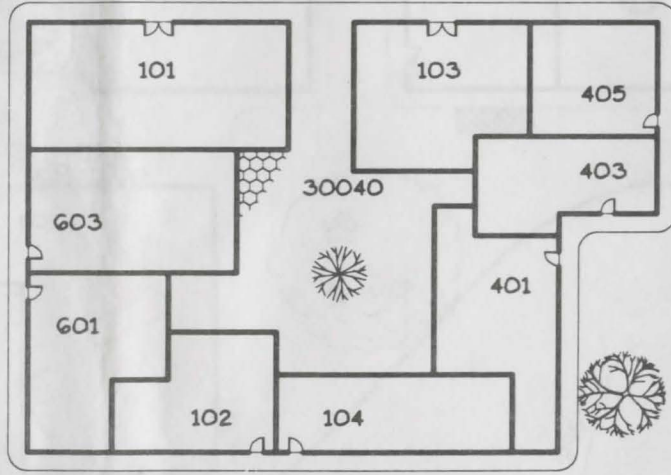
THE GREAT OCEAN

80115

84'



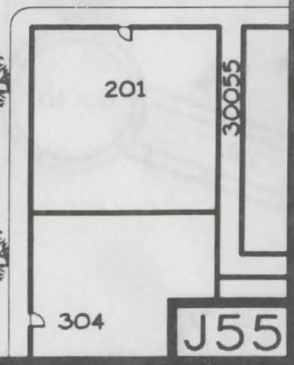
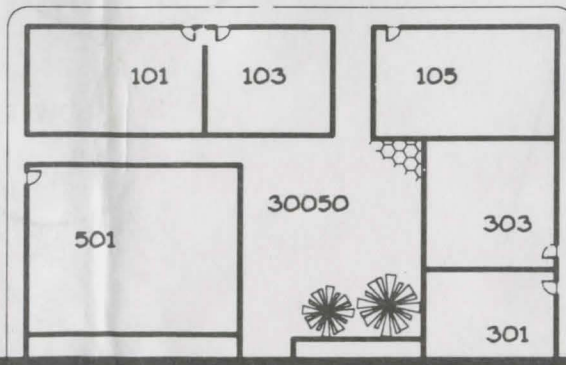
MAIN STREET



OCEAN VIEW

AVE. OF THE ELDERS

AVE. OF PROCESSIONS



J55

J56

J56

J55



J55

J55

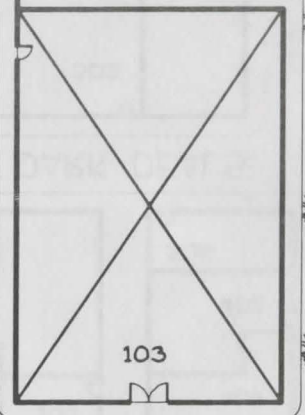
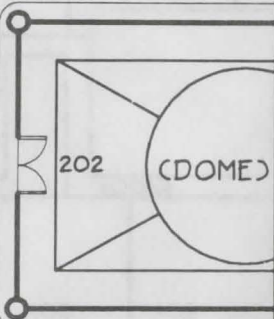
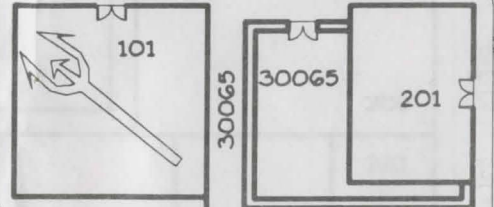
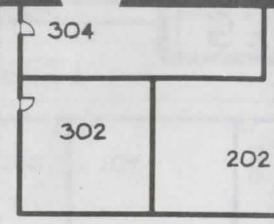
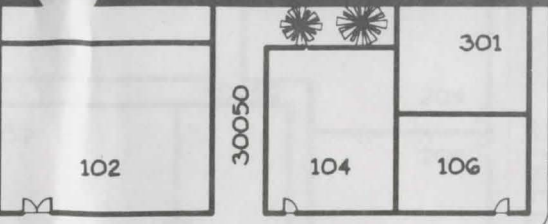
THE GREAT OCEAN

80115

86'

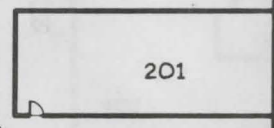
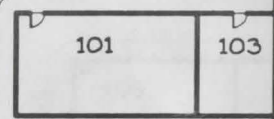
WEST VIEW ROAD

PAGAN PL.



AVE. OF PROCESSIONS

POE PL.

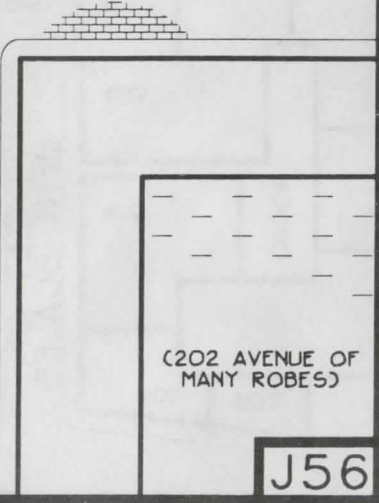
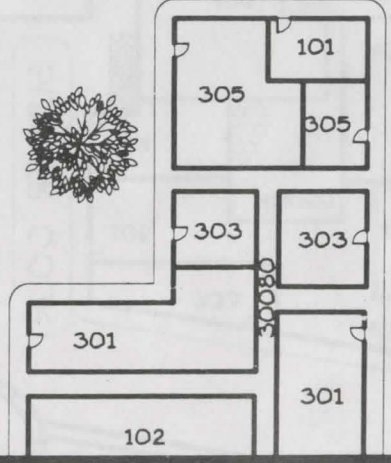


AVE. OF ORBITS

WEST VIEW ROAD

TORC STREET

89'



J56

J57

J57

J56

J56

J56

THE GREAT OCEAN

80115

89'

90'

WEST VIEW ROAD

ST OF ORACLES

GRANGE ST.

KINGS WALL ROAD

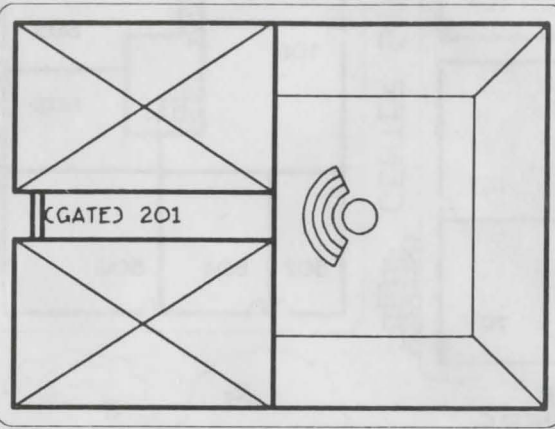
80065

102

301

TORC

(202 AVENUE OF MANY ROBES)



TORC STREET

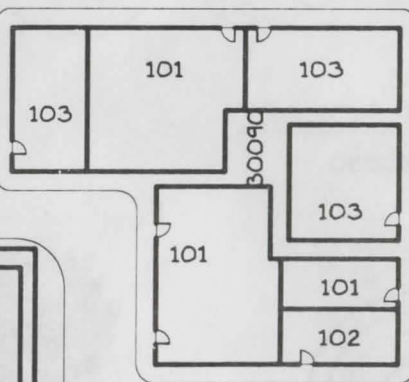
201

204

30085

202

202



TORC STREET

201

30095

202

204



J57

J57



# OUTER CITY

80110

80045

NEW WALL ROAD

80045

NEW WALL ROAD

WATCHMAN'S SQUARE

DIVISION STREET

CLINK STREET

FINE WARES NORTH

STREET OF DARK DEALS

FINE WARES NORTH

COMMON MARKET

FINE WARES NORTH

FINE WARES SOUTH

FLAME STREET

AVENUE OF DEATH

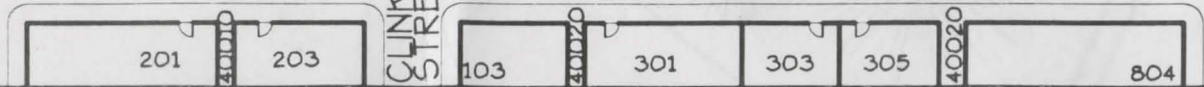
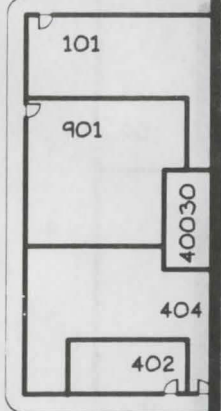
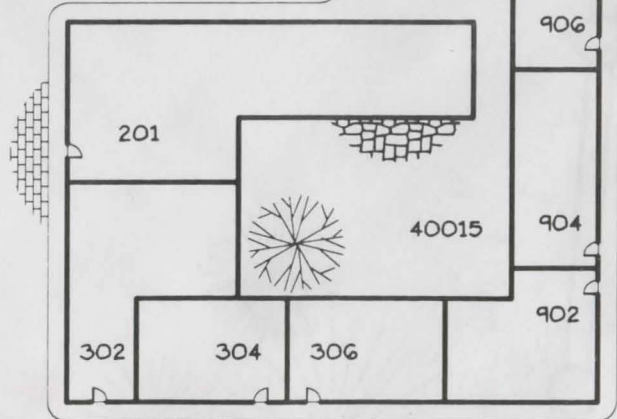
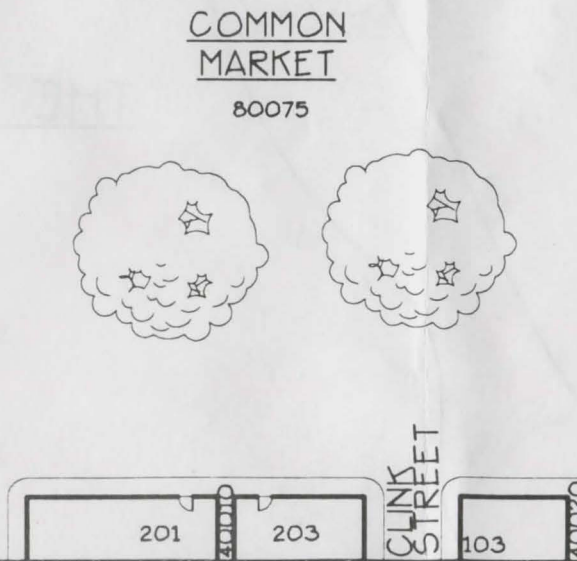
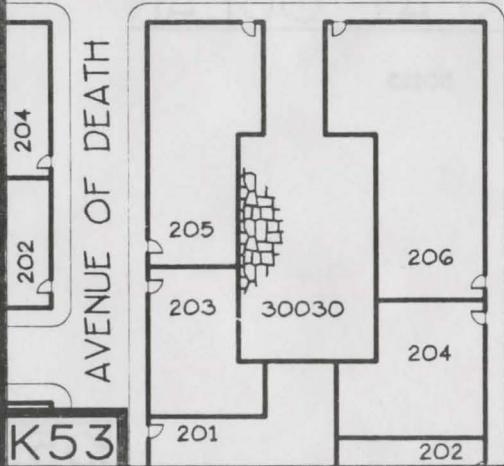
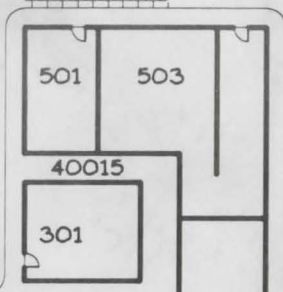
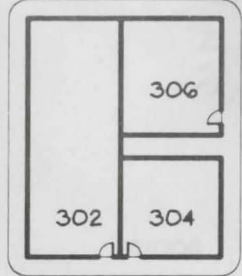
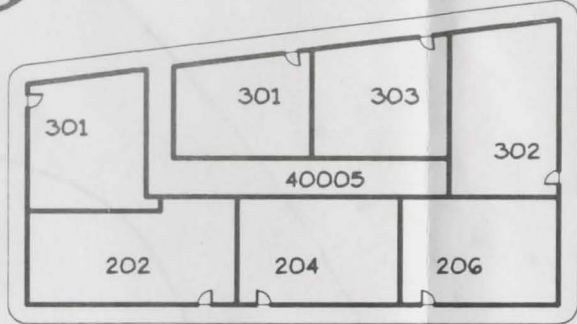
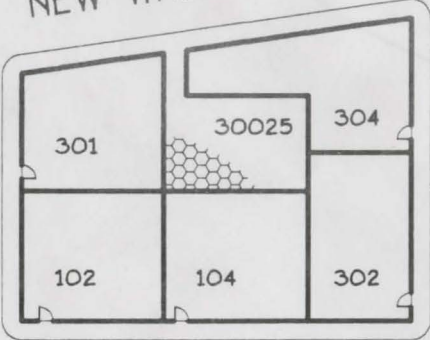
CLINK STREET

K53

K53

K54

K54

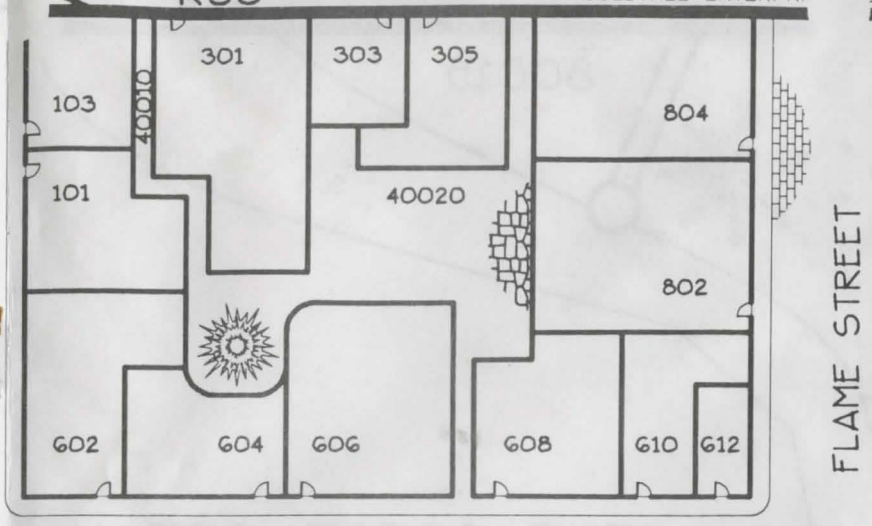
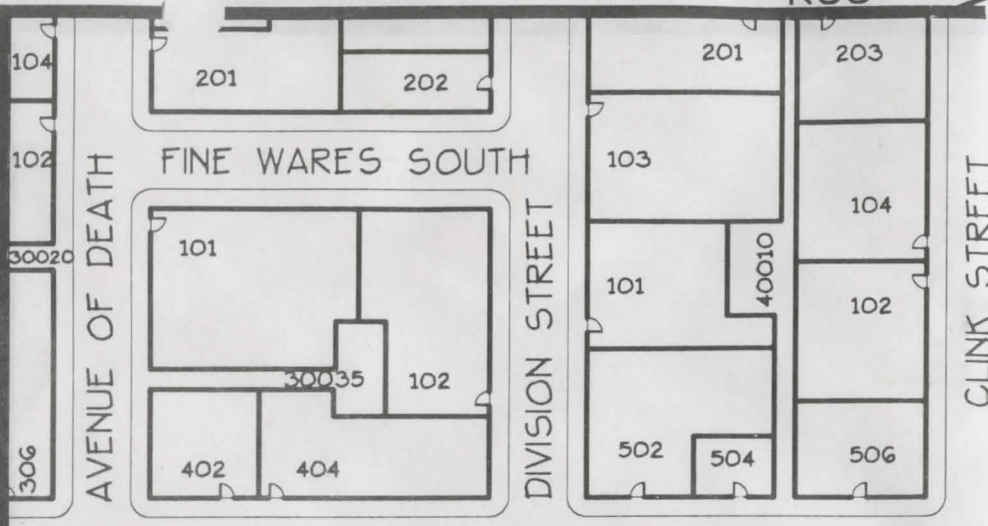


K53

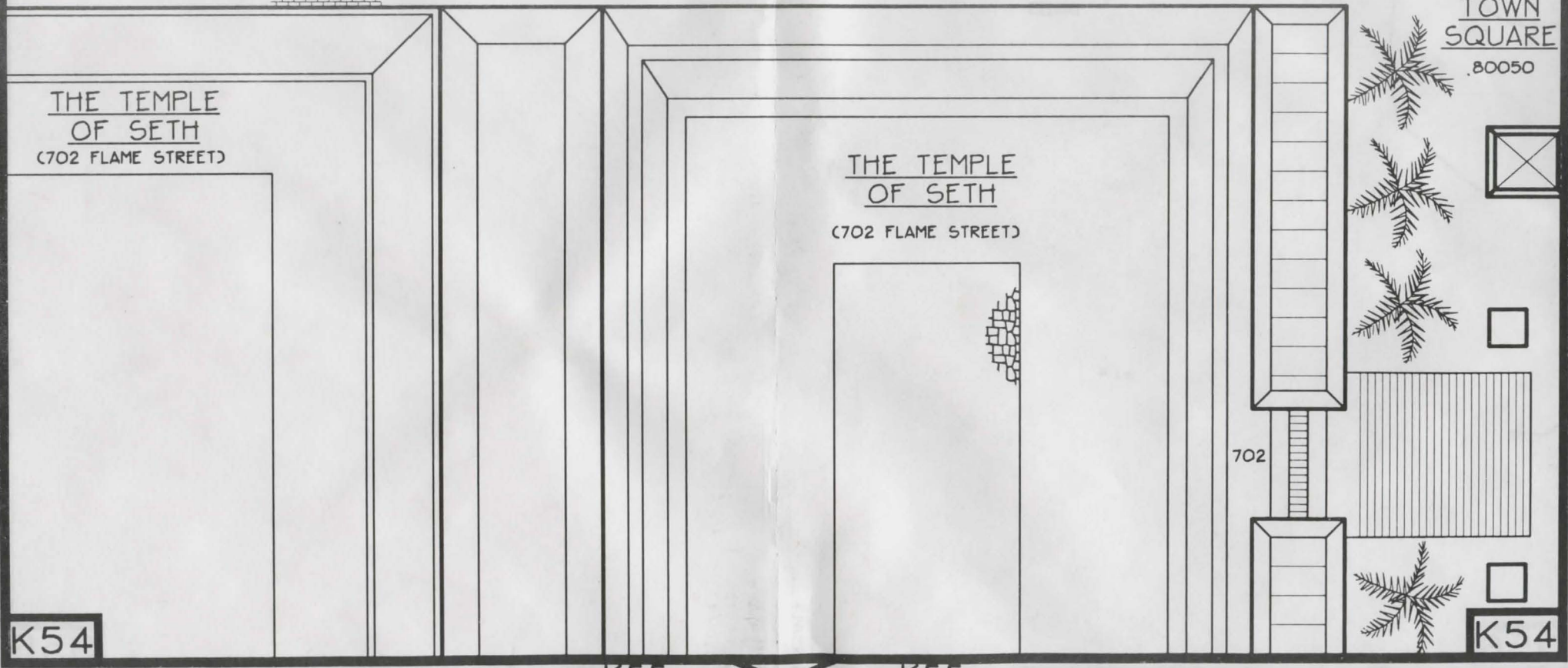
K53

GOLDTREE ENTERPRISES

Copyright (1993)



AVENUE OF BLACK WHISPERS



K54

K54

K55

K55



K54

K54

GOLDTREE ENTERPRISE

pyright (1993)

(702 FLAME STREET)

THE TEMPLE  
OF SETH  
(702 FLAME STREET)

MAIN STREET

203 206

30045

204

204

202

EMBER ST.

303

604

201

602

302

303

AVENUE OF MANY ROBES

401

403

405

407

10005

601

606

604

AVE. OF THE ELDERS

203

205

301

102

104

106

108

110

602

AVENUE OF WANDS

FLAME STREET

(501 MAIN STREET)

K55

204

102

103

504

502

101

103

105

107

K55

K56

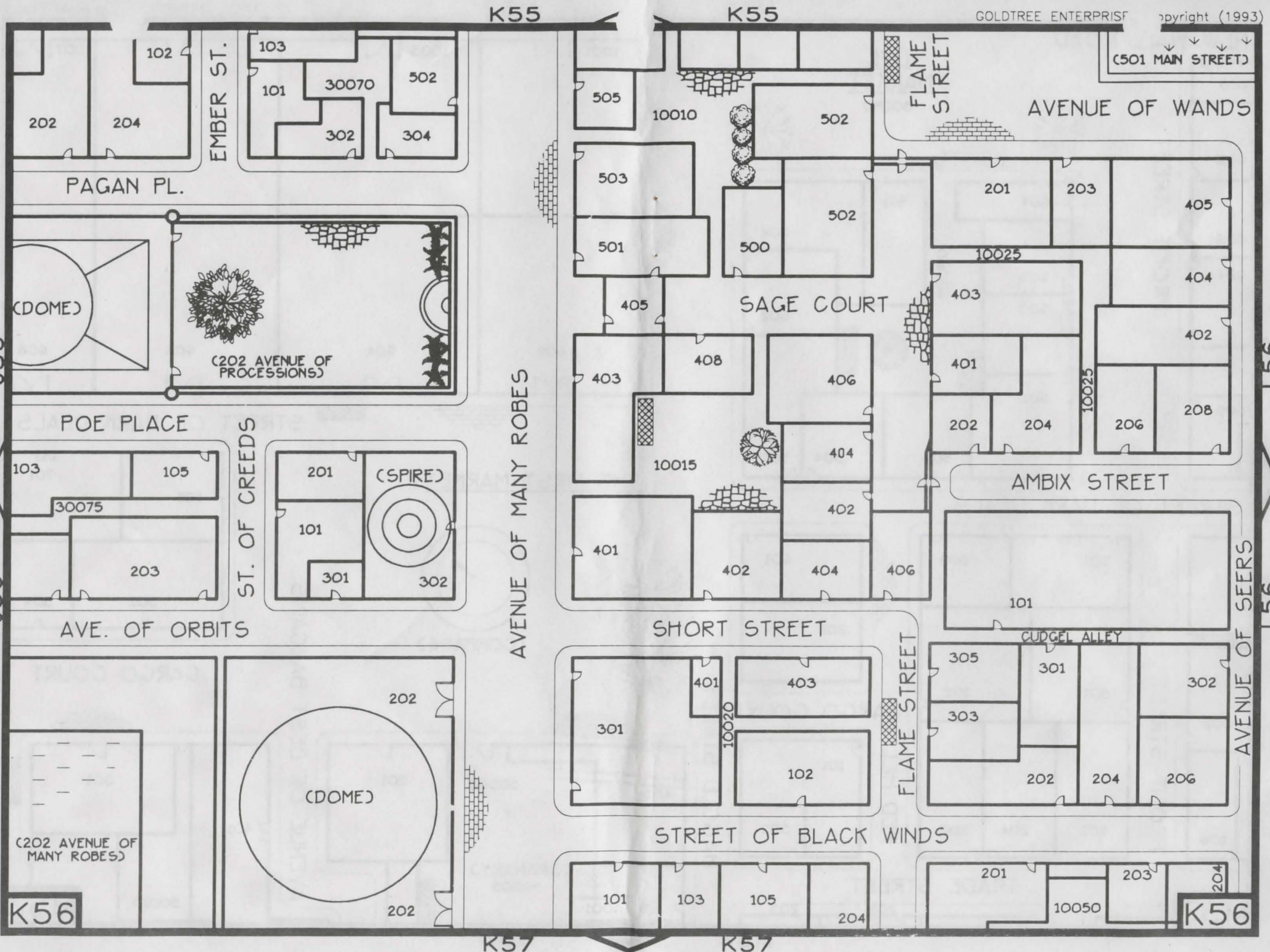
K56

J55

J55

L55

L55



K55

K55

(501 MAIN STREET)

AVENUE OF WANDS

PAGAN PL.

(DOME)

(202 AVENUE OF PROCESSIONS)

POE PLACE

ST. OF CREEDS

(SPIRE)

AVE. OF ORBITS

AVENUE OF MANY ROBES

SAGE COURT

SHORT STREET

STREET OF BLACK WINDS

FLAME STREET

AMBIX STREET

CUDGEL ALLEY

FLAME STREET

AVENUE OF SEERS

K56

K56

K57

K57



K56

K56

(202 AVENUE OF MANY ROBES)

201

ST OF ORACLES

201

203

30085

204

202

202

GRANGE ST.

203

205

30095

102

204

206

208

CRYSTAL CT.

301

(SPIRE)

AVENUE OF MANY ROBES

101

103

105

204

205

203

202

201

102

104

SHADOW WALK

101

105



(SPIRE)

103

104

101

10035

102

402

404

406

408

FLAME STREET

108

201

203

205

107

10040

105

104

103

102

101

504

506

508

PLAZA OF SHADES

80080

KINGS WALL ROAD

80065

80005

K57

K57

J57

J57

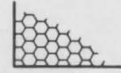
L57

L57

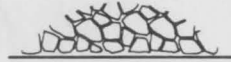
# SYMBOL LEGEND

DRAWING SCALE: 1" = 40'

PAVERS



BOULDERS



STONE



SLATE



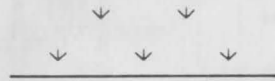
BRICK



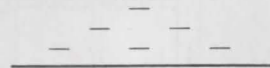
SEWER



GRASS



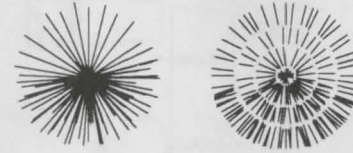
DIRT



PALMS



CONIFERS



CANOPY



SHRUBS



FOOT PATH



## OUTER CITY

80110

80040

NEW WALL ROAD



# OUTER CITY

80110

80040

NEW WALL ROAD

CENTER STREET

CENTER STREET

AVENUE OF SILVER

STREET OF BENT SCALES

STREET OF BENT SCALES

SUMMER COURT

SQUARE OF DELIGHTS

(FOUNTAIN)

STREET OF DARK DEALS

FINE WARES SOUTH

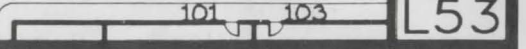
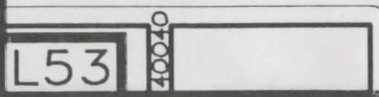
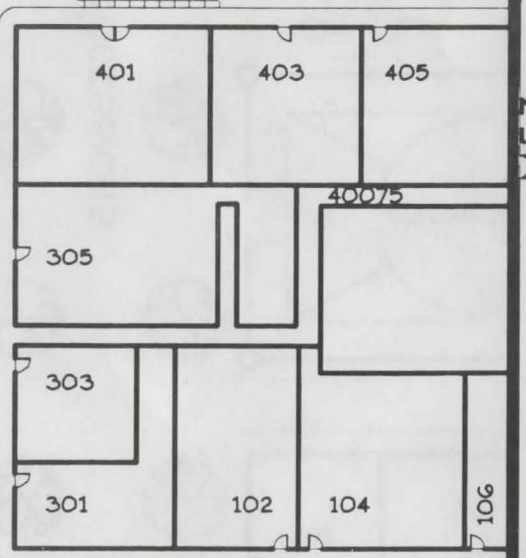
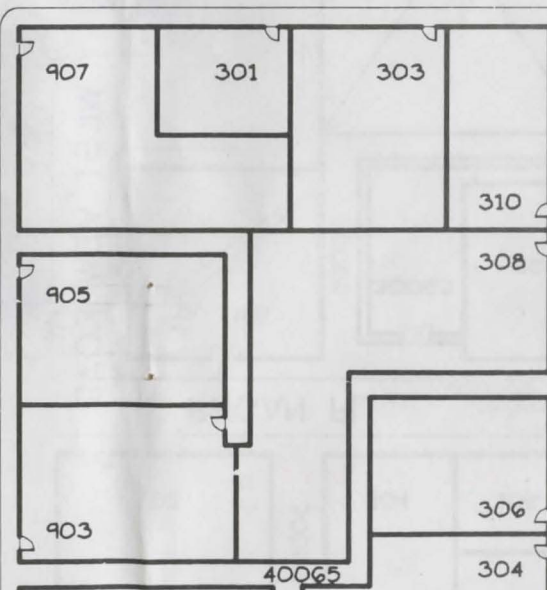
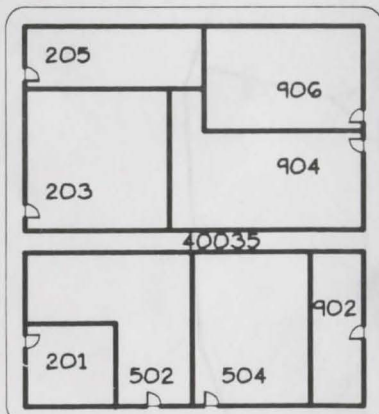
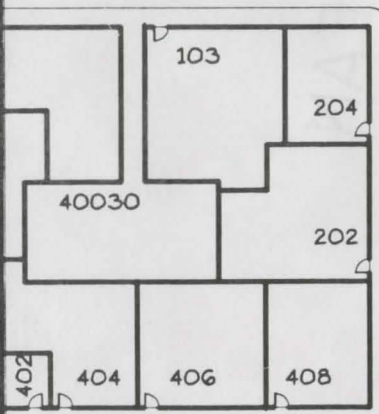
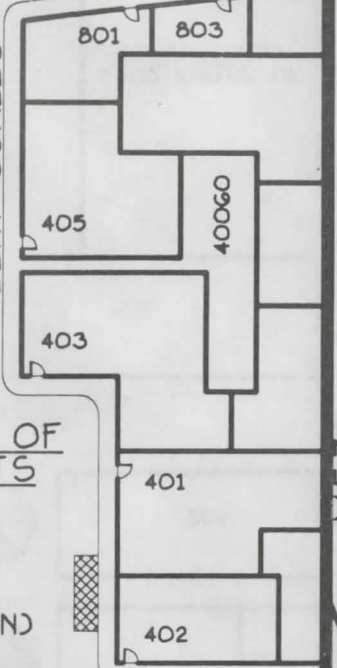
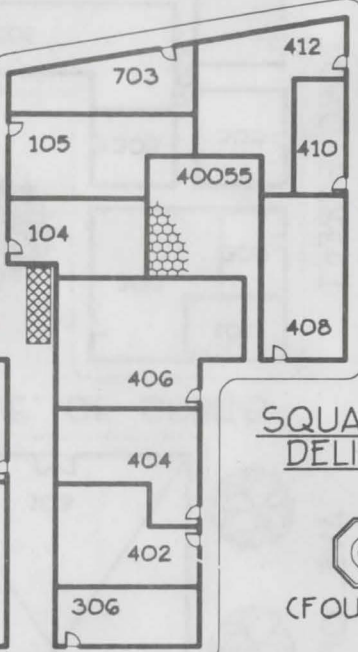
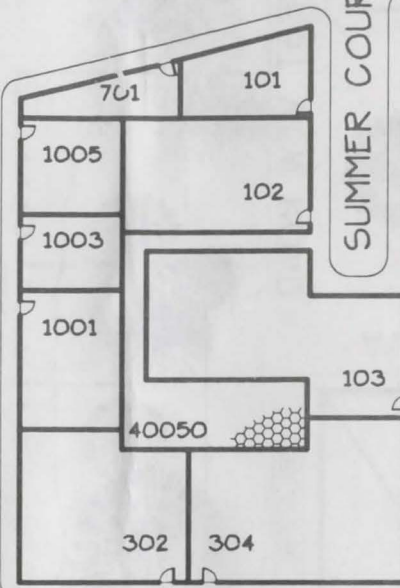
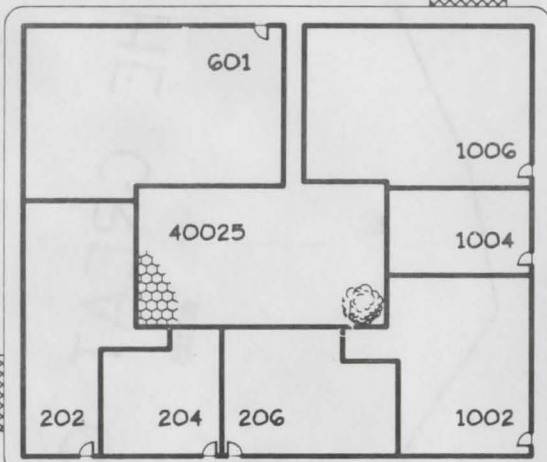
TRADE STREET

L53

L53

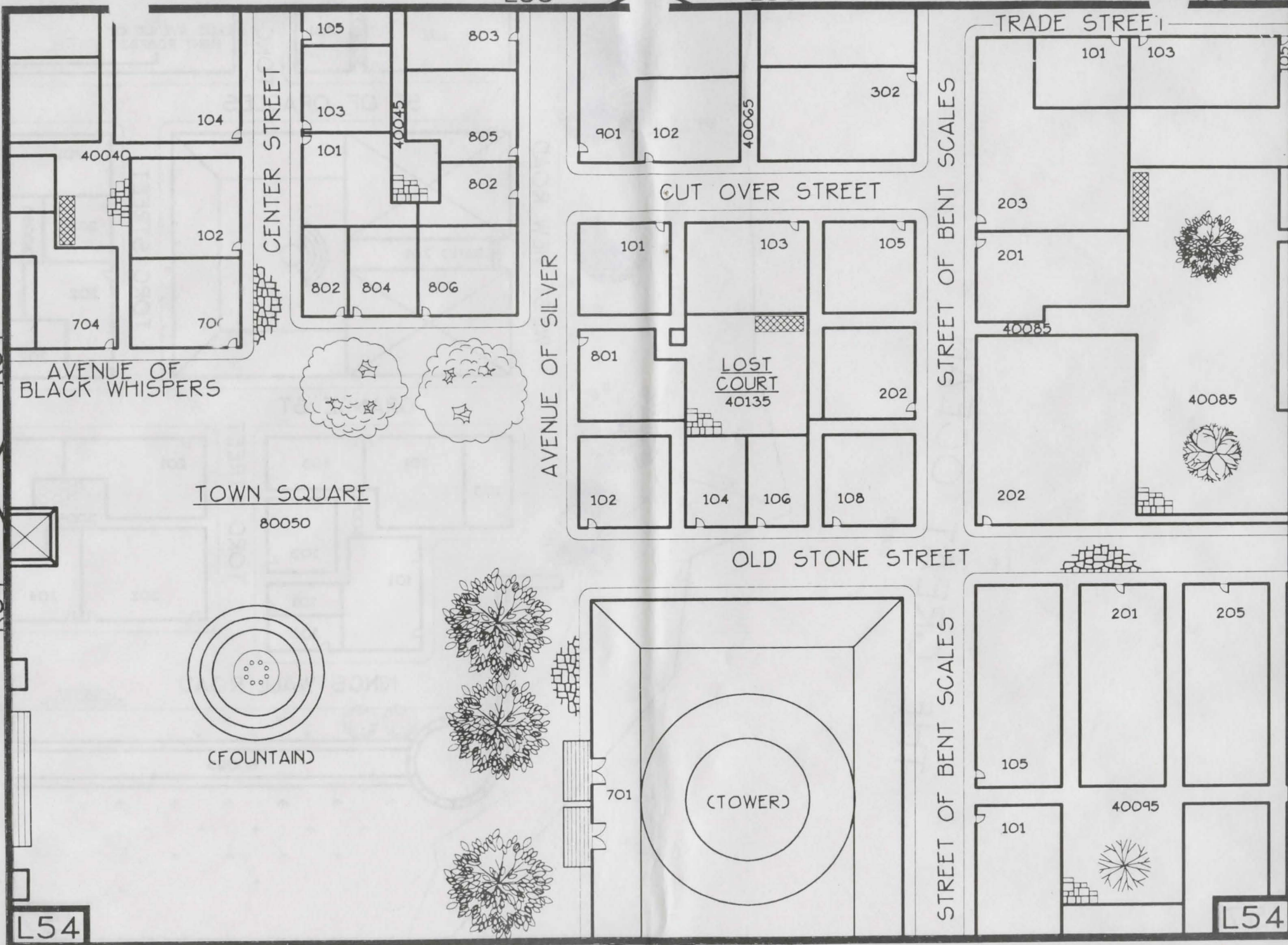
L54

L54



L53

L53



CENTER STREET

AVENUE OF SILVER

STREET OF BENT SCALES

STREET OF BENT SCALES

AVENUE OF BLACK WHISPERS

TOWN SQUARE  
80050

CUT OVER STREET

OLD STONE STREET

TRADE STREET

LOST COURT  
40135

(TOWER)

(FOUNTAIN)

L54

L54

L55

L55

K54

K54

M54

M54



L54 L54

TOWN SQUARE

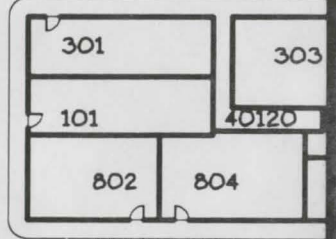
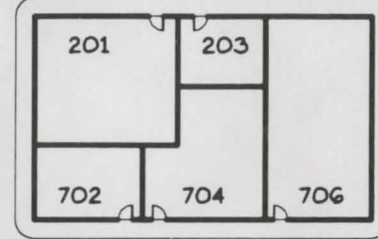
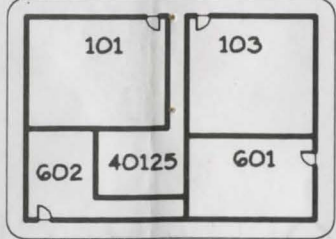
80050

(701 AVENUE OF SILVER)

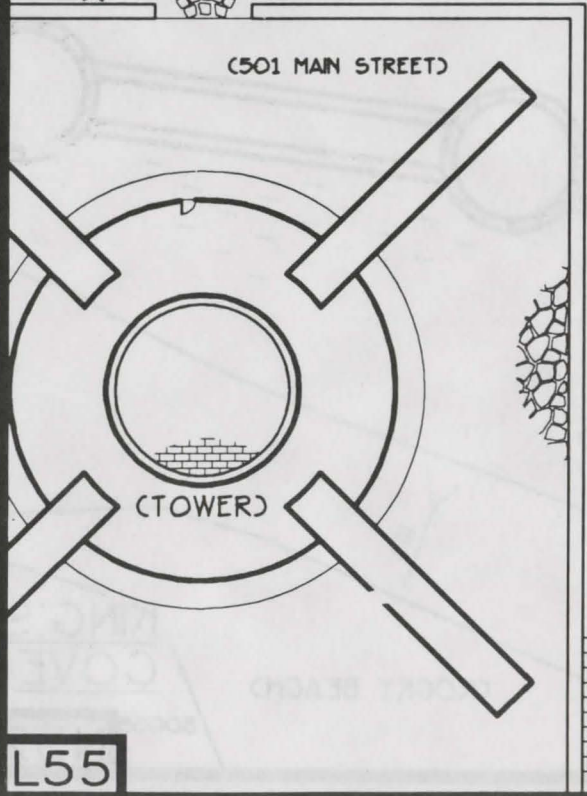
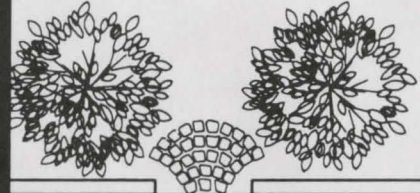
GOLD LANTERN STREET

BENT SCALES

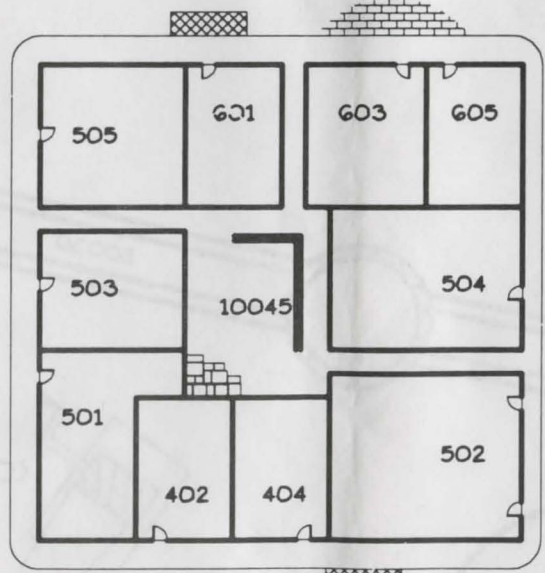
302 306



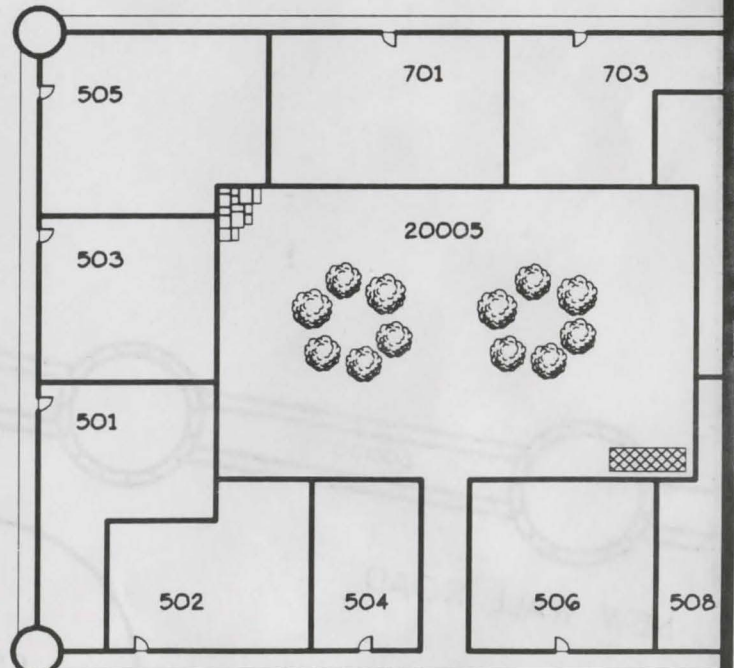
MAIN STREET



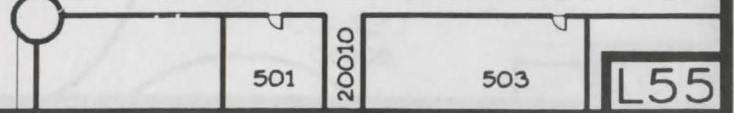
AVENUE OF SILVER



STREET OF FORTUNES



AVENUE OF WANDS



L55

L55

L56 L56

L55

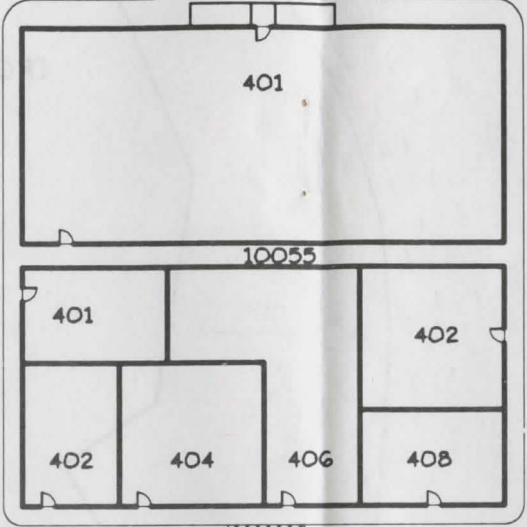
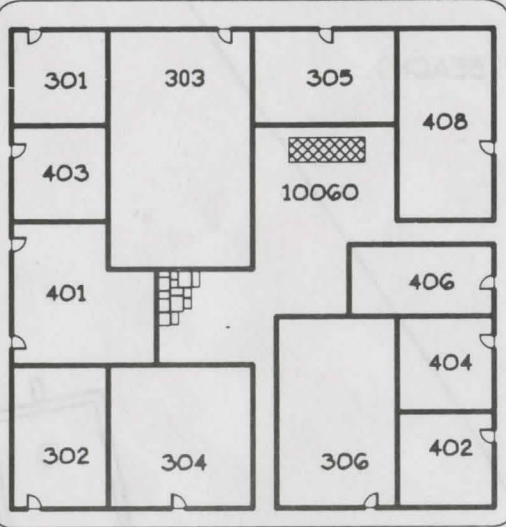
L55

(501 MAIN STREET)

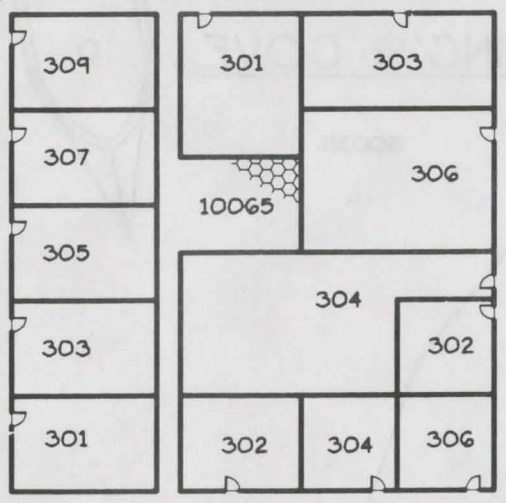
(FOUNTAIN)

AVENUE OF WANDS

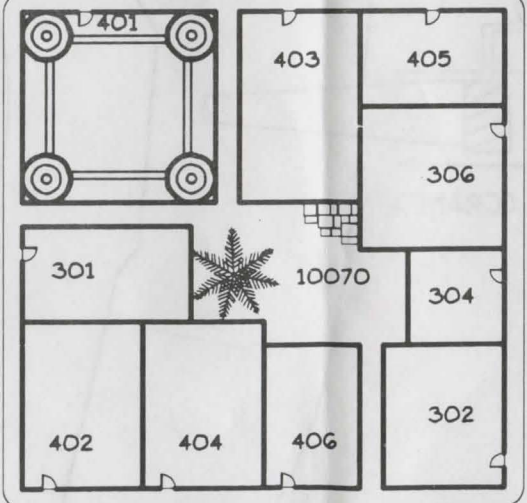
AVENUE OF SEERS



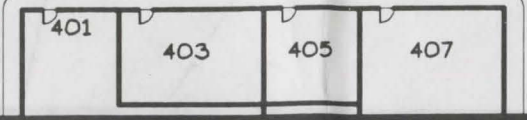
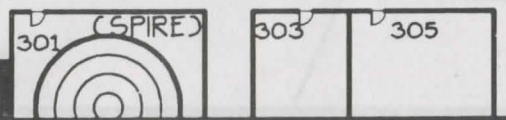
AMBIX STREET



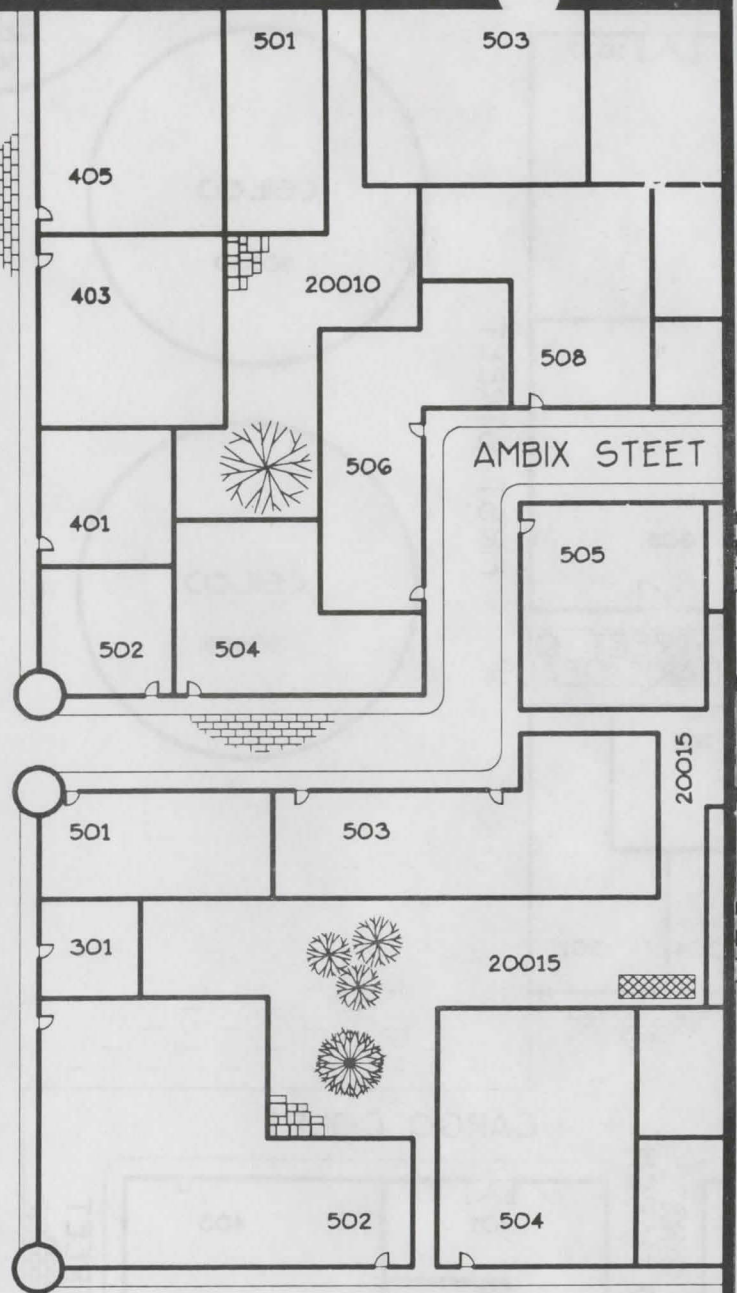
AVENUE OF SILVER



STREET OF BLACK WINDS



STREET OF FORTUNES



AMBIX STREET

L56

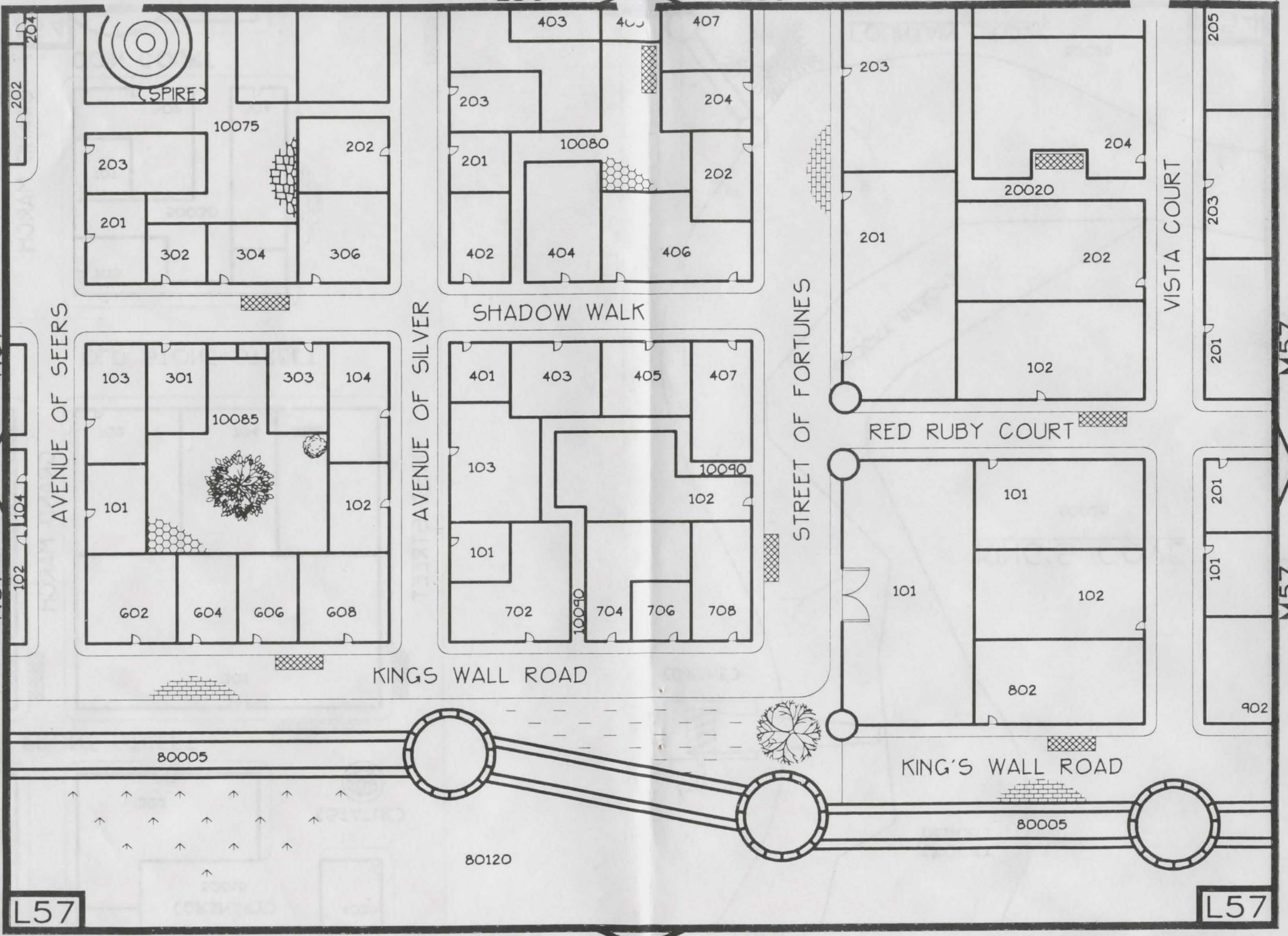
L56

L57

L57



L56 L56



L57

L57

K57

K57

M57

M57

(SPIRE)

10075

403

407

203

205

202

204

203

202

203

204

10080

201

202

201

302

304

306

402

404

406

20020

204

201

202

203

VISTA COURT

AVENUE OF SEERS

AVENUE OF SILVER

SHADOW WALK

STREET OF FORTUNES

103

301

303

104

401

403

405

407

10085

10090

RED RUBY COURT

101

102

103

102

102

201

104

102

602

604

606

608

101

702

704

706

708

101

102

201

101

902

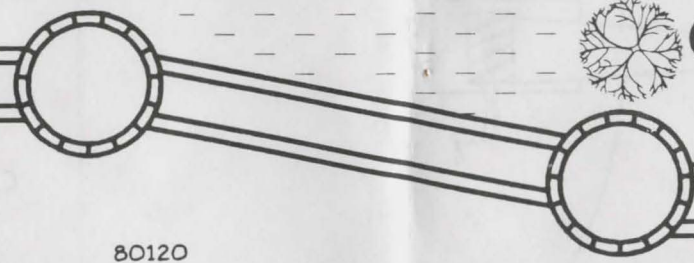
KINGS WALL ROAD

KING'S WALL ROAD

80005

80005

80120



M51

M51

GOLDTREE ENTERPRIS

Copyright (1993)

# OUTER CITY

80110

80040

80040

NEW WALL ROAD

NEW WALL ROAD

LIVE MARKET  
80090

M52

M52

M53

M53

1001

1003

1005

L52

L52

N52

N52



M52

M52

GOLDTREE ENTERPRIS

opyright (1993)

NEW WALL ROAD

LIVE MARKET

80090

1001

1003

1005

1007

805

608

606

604

602

PROFIT STREET

607

901

604

605

603

40080

602

601

502

504

506

602

604

606

608

STREET OF DARK DEALS

STREET OF DARK DEALS

THE FIRST MARKET

501

701

302

304

CARGO COURT

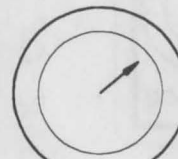
40075

501

503

601

201



(COMPASS)

502

501

102

CARGO COURT

101

302

HAGGLE STREET

403

50005

201

AVENUE OF BEST BARGAINS

106

202

204

206

RED HILL

401

(GRANARY)  
50005

401

301

TRADE STREET

201

203

50010

M53

M54

M54

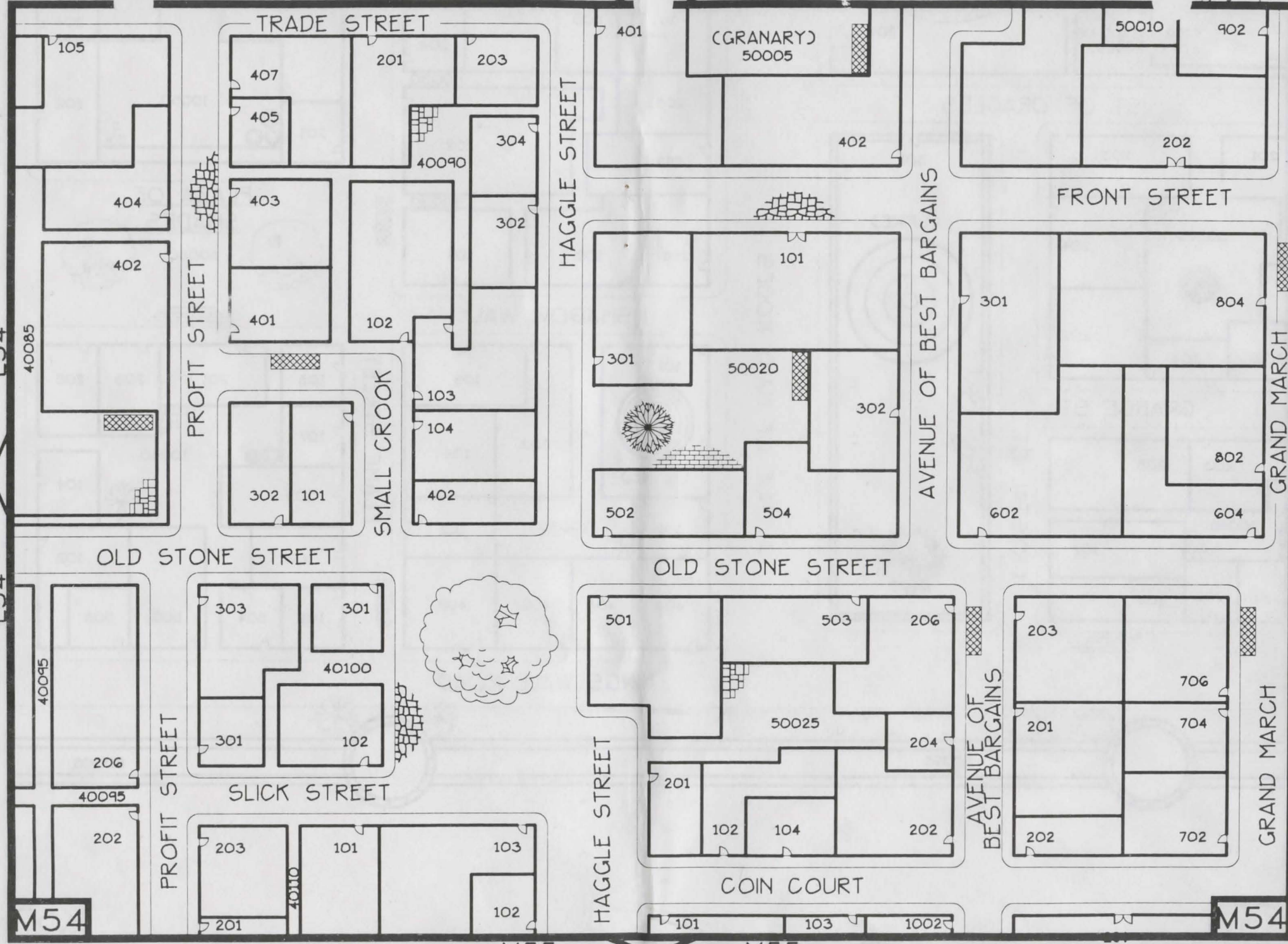
M53

M53

M53

GOLDTREE ENTERPRISES

Copyright (1993)





M54

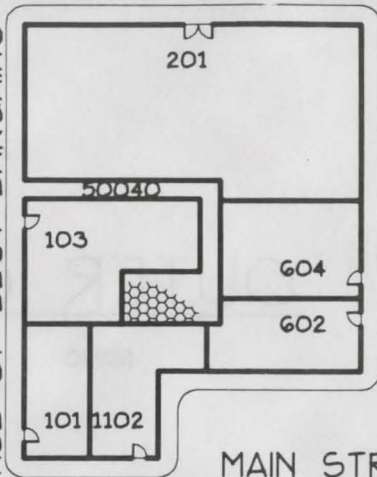
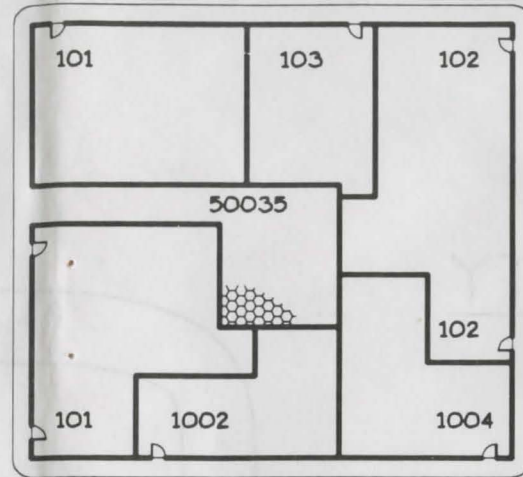
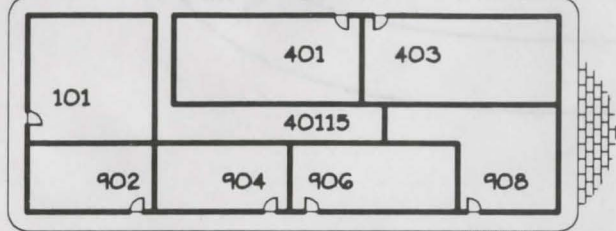
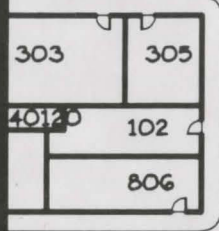
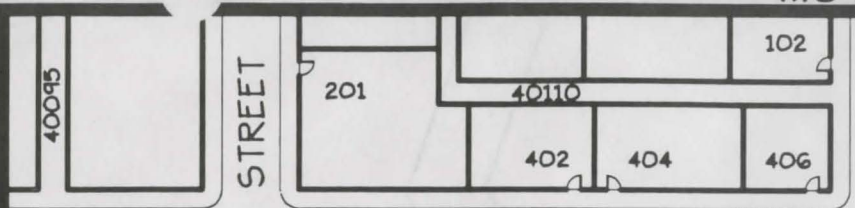
M54

PROFIT STREET

HAGGLE STREET

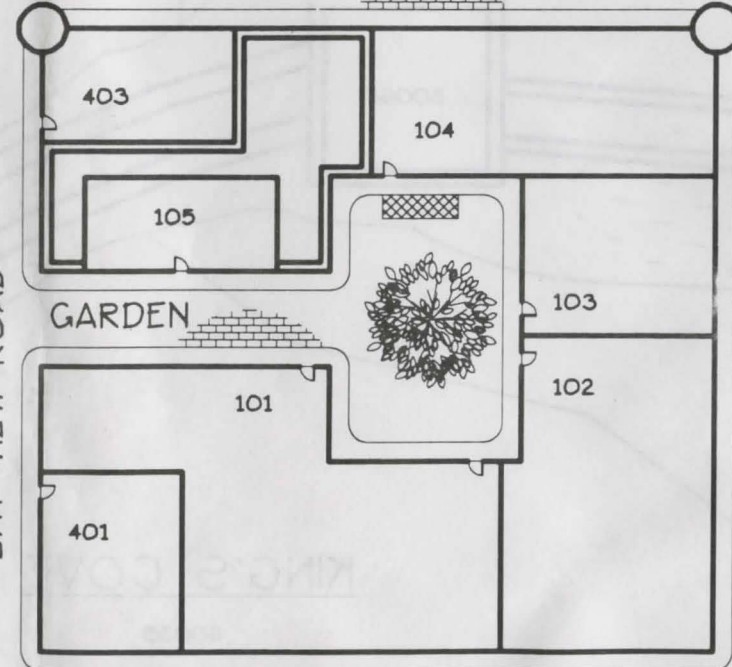
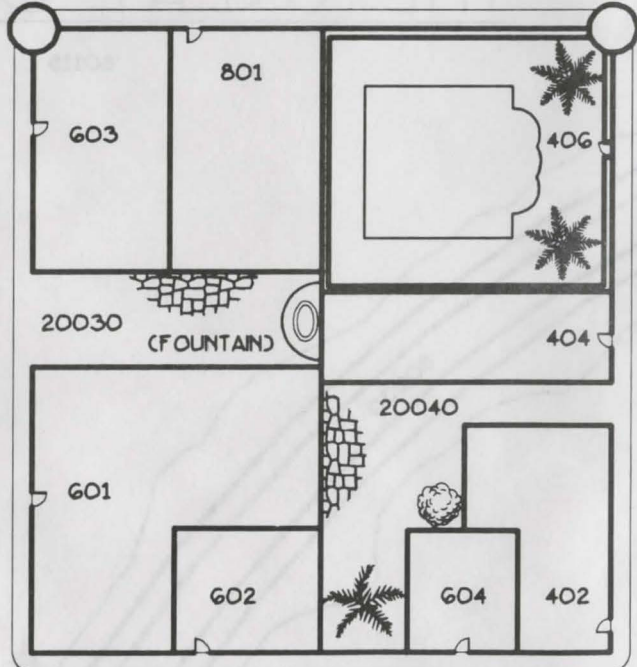
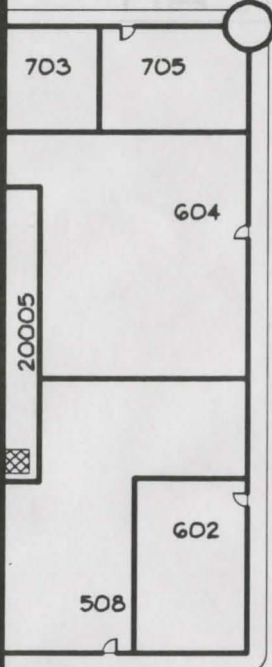
AVENUE OF BEST BARGAINS

GRAND MARCH



MAIN STREET

MAIN STREET



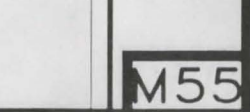
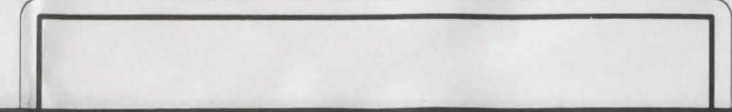
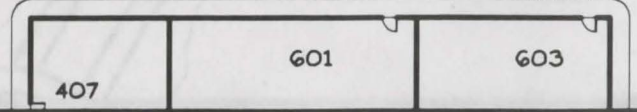
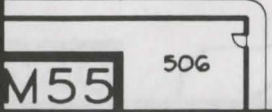
GRAND MARCH

503

501

ERMIN COURT

403



M55

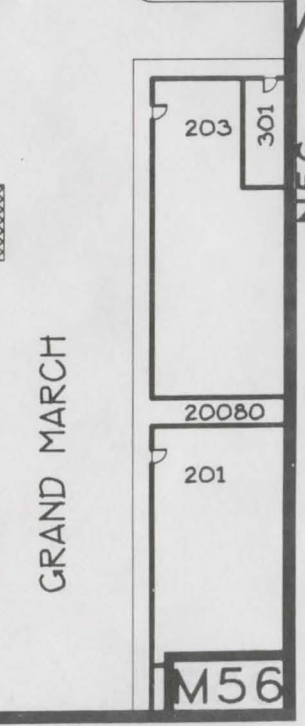
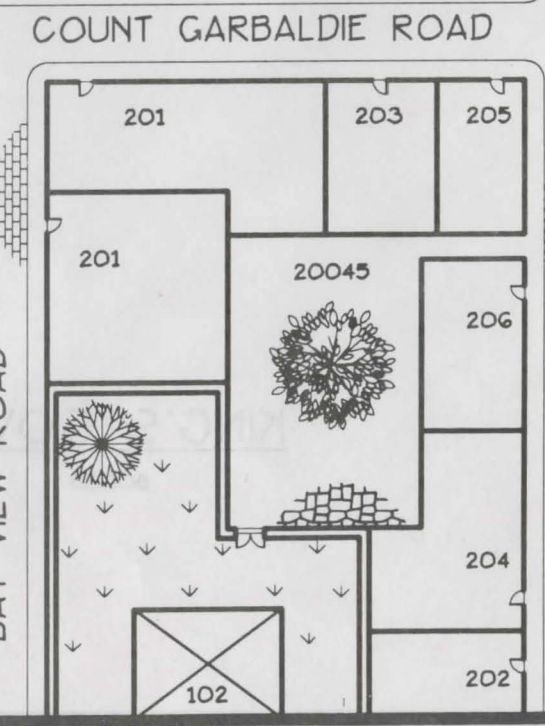
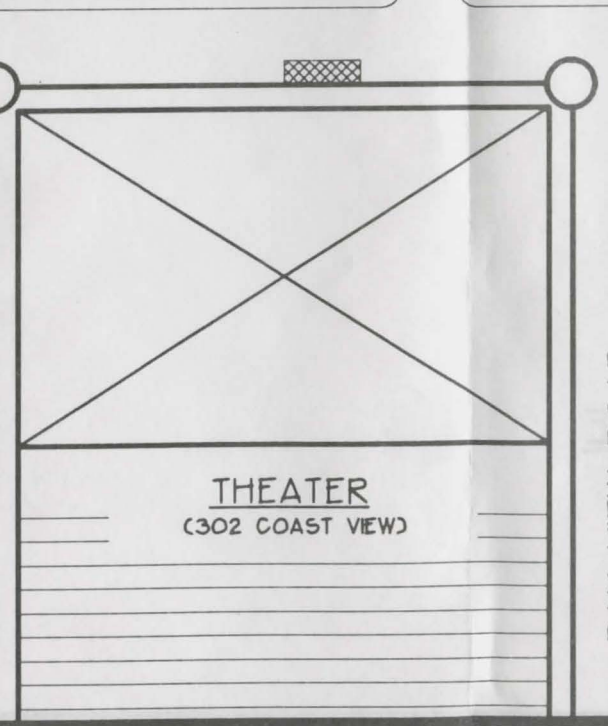
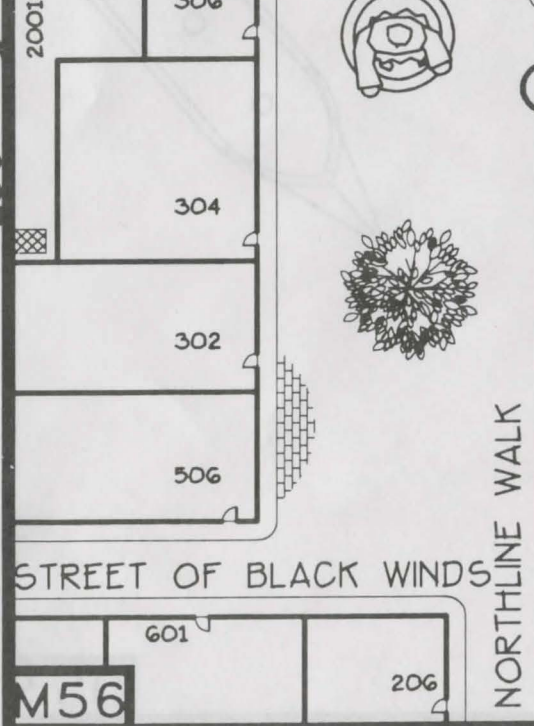
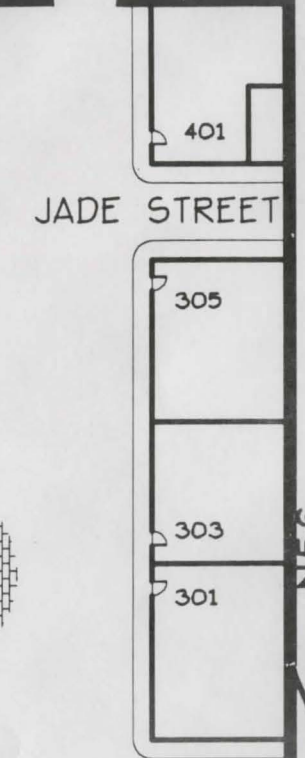
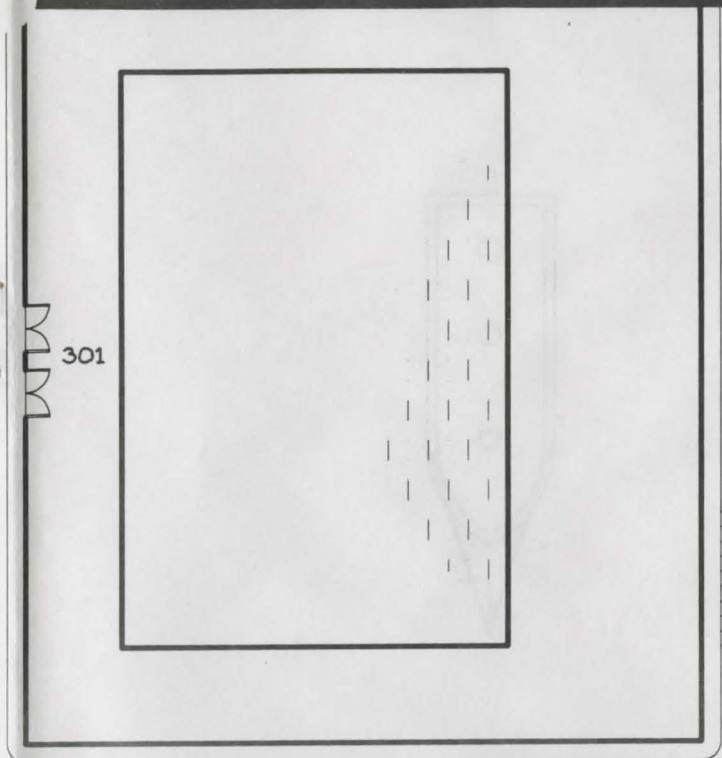
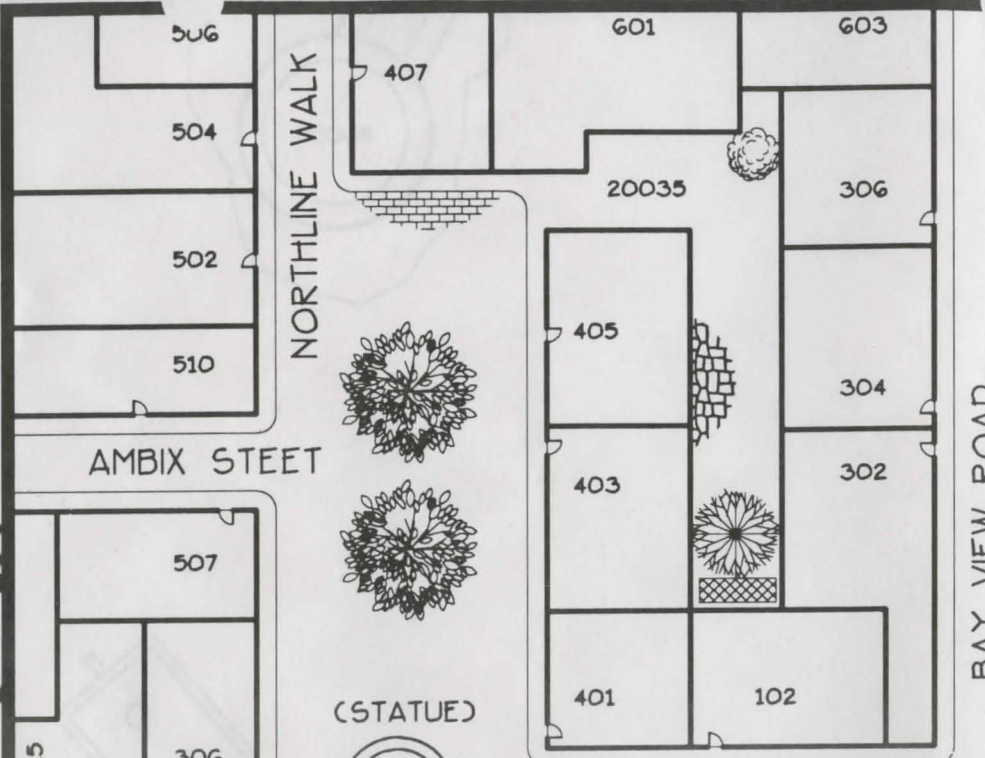
M55

M56

M56

M55

M55



M56

M56

M57

M57

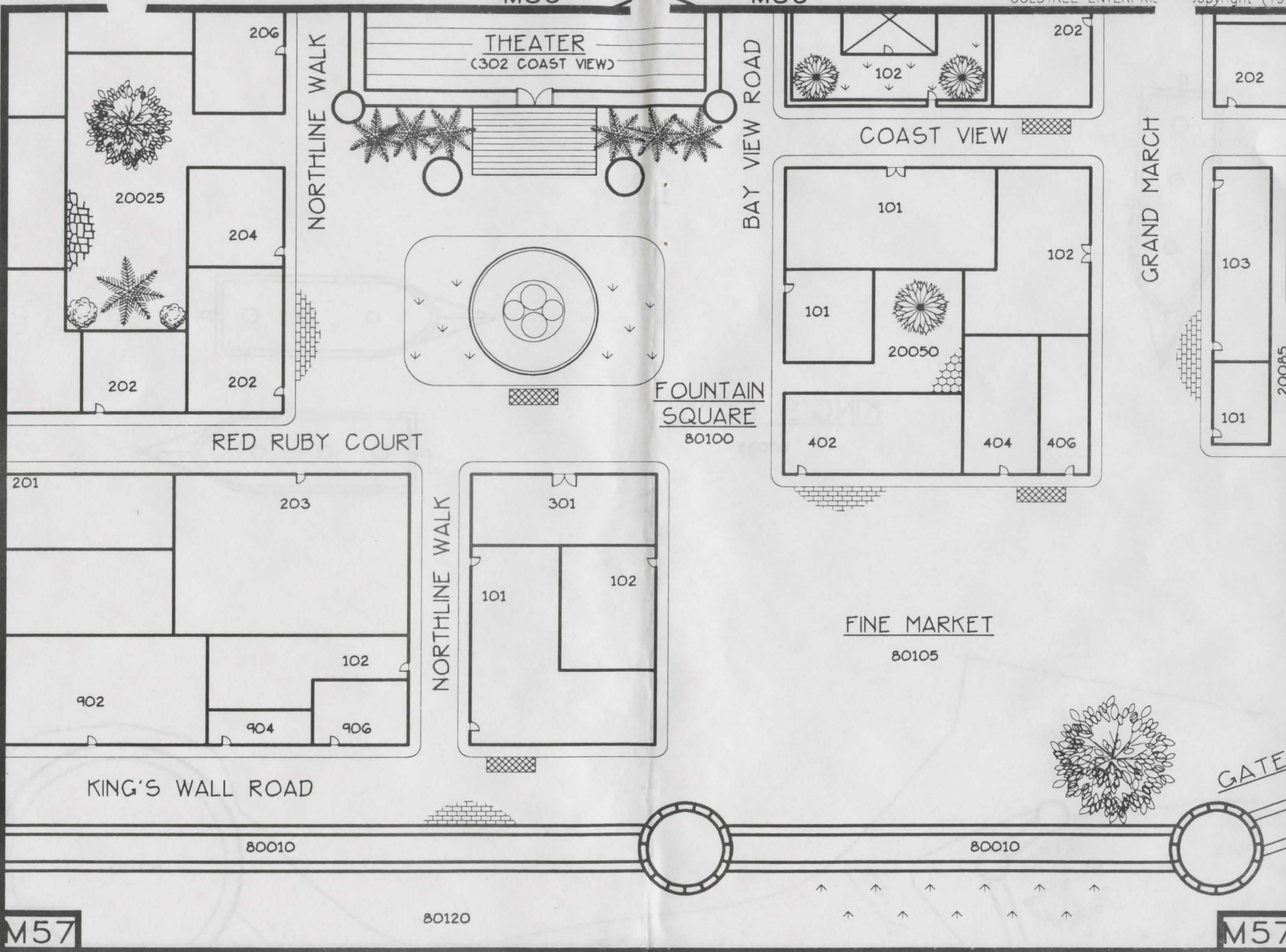


M56

M56

GOLDTREE ENTERPRIS

Copyright (1993)



N51

N51

GOLDTREE ENTERPRIS

opyright (1993)

# OUTER CITY

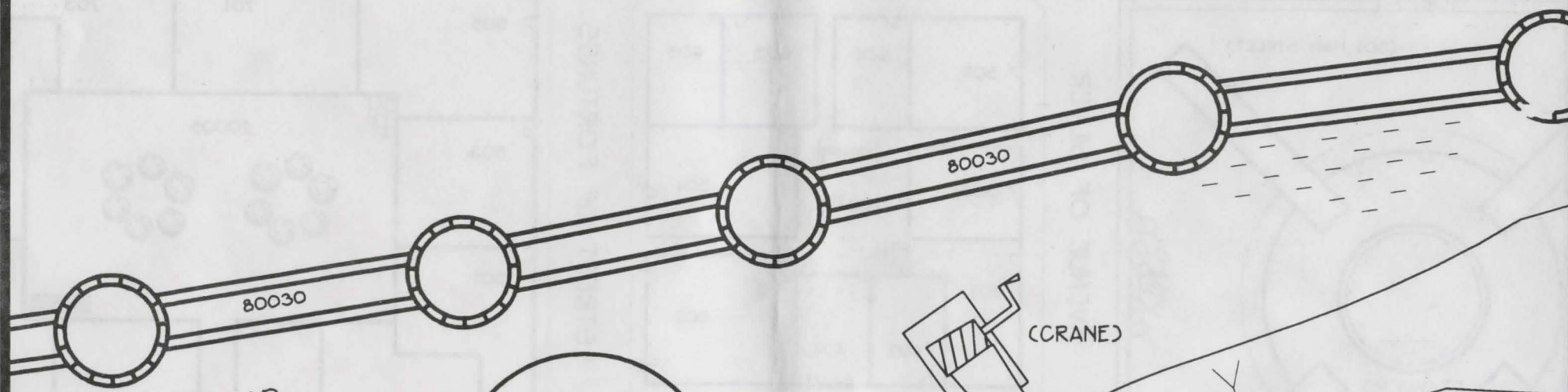
80110

M52

M52

M52

M52



NEW WALL ROAD

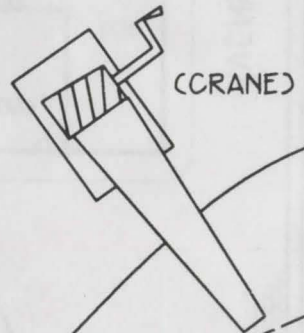
80030

80030



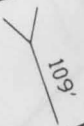
(SILO)  
50045

(SILO)  
50050



(CRANE)

(CROCKY BEACH)



109

KING'S  
COVE

80035

N52

N52

N53

N53



N52

N52

SILO  
50045

(SILO)

50050

(SILO)

50055

(ROCKY BEACH)

113'

KING'S COVE

80035

(CRANE)

116'

(ROCKY BEACH)

FIRST STREET

STREET OF  
DARK DEALS

CARGO COURT

GRAND MARCH

FIRST STREET

1007

608

701

304

502

401

403

(GRANARY)  
50015

402

N53

N54

N54

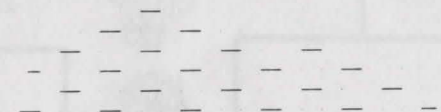
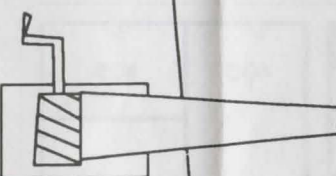
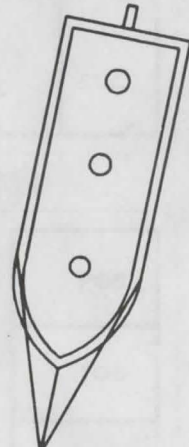
N53

M53

M53

M53

M53



N53

N53

GOLDTREE ENTERPRISE

Copyright (1993)

(GRANARY)  
50015

402

302

(STATUE)



FRONT STREET

301

GRAND MARCH

FIRST STREET

702

704

706

OLD STONE STREET

703

50030

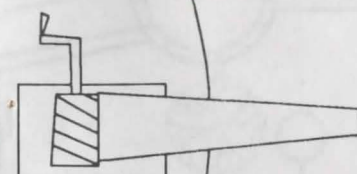
701

302

304

COIN COURT

GRAND MARCH



(CRANE)

(ROCKY BEACH)

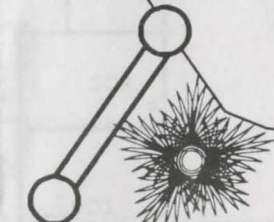
220'

KING'S COVE

80035

(ROCKY BEACH)

230'



FOUNTAIN GROVE

80025

N54

N54

N55

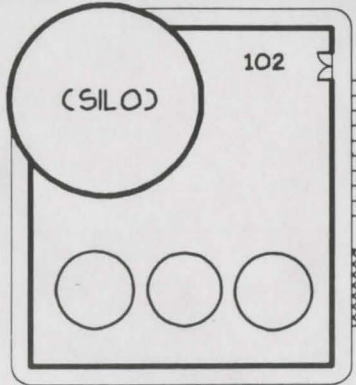
N55

M54

M54



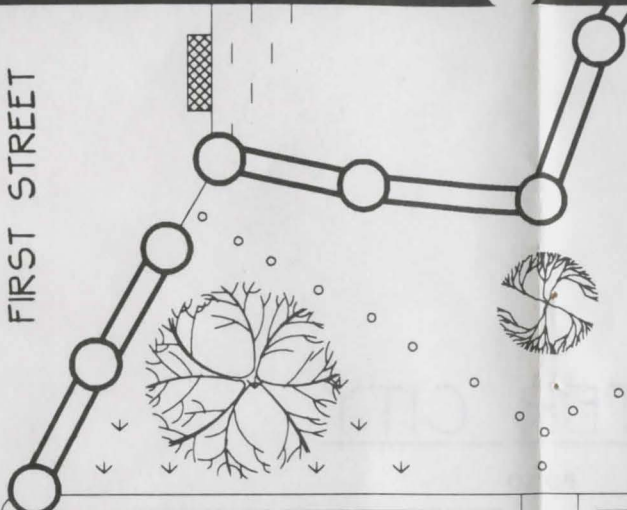
GRAND MARCH



102

MAIN STREET

FIRST STREET

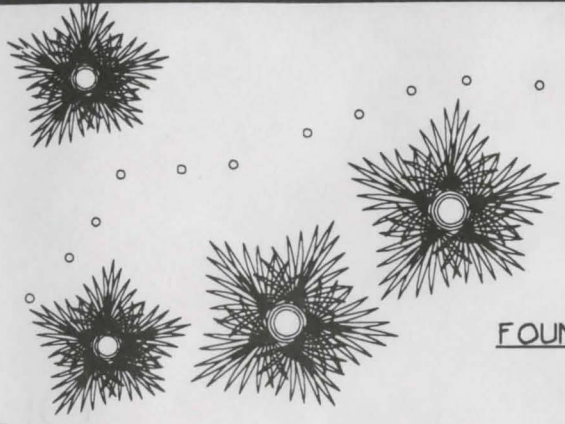


N54

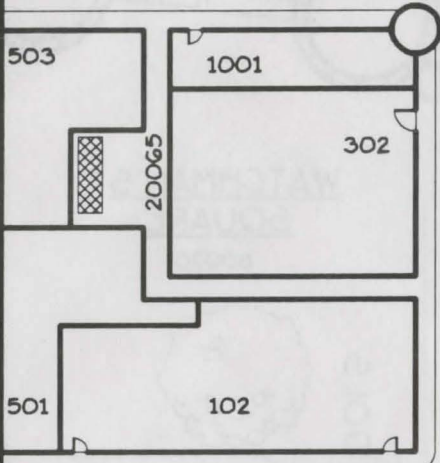
N54

FOUNTAIN GROVE

80025

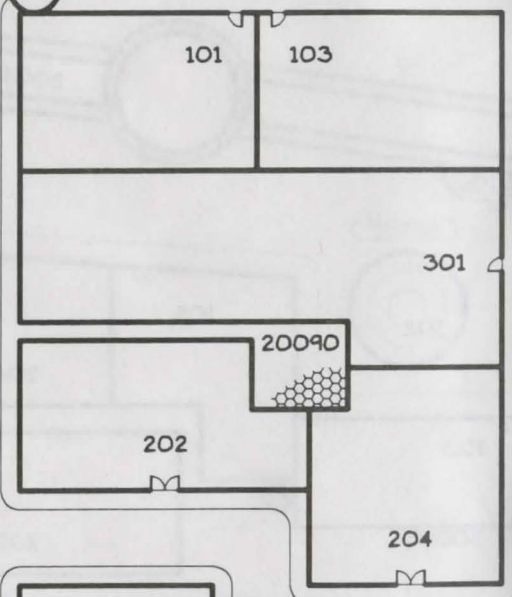


M55

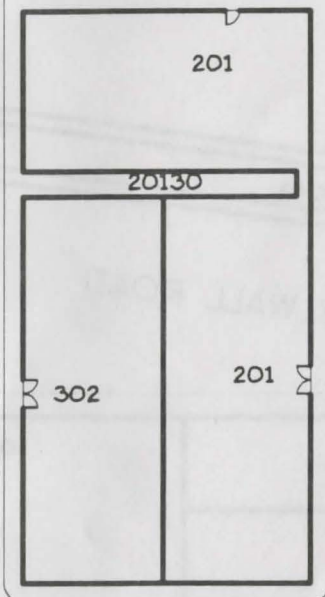


ERMIN COURT

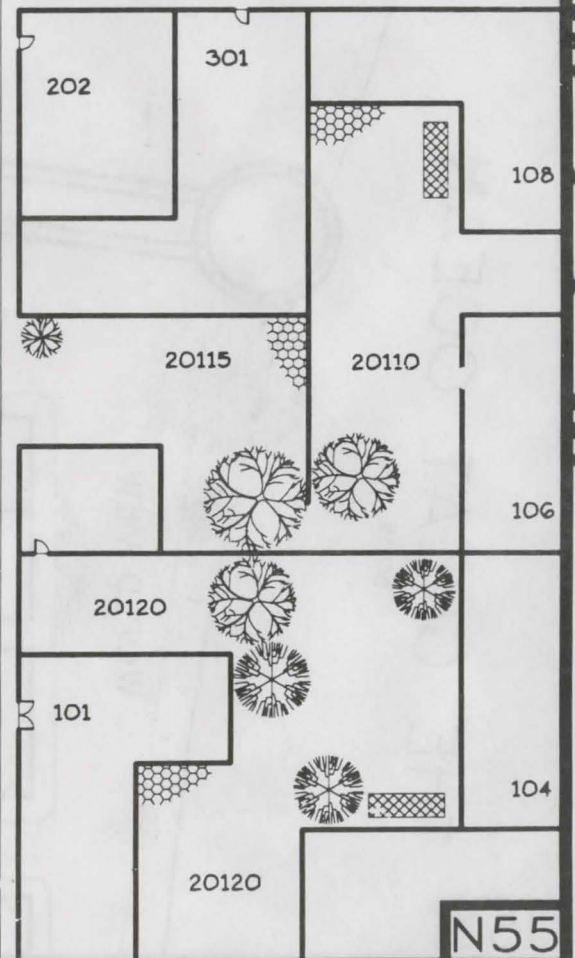
MOON GLOW ROAD



GOLD CUP ROAD



PARADISE PLACE



N55

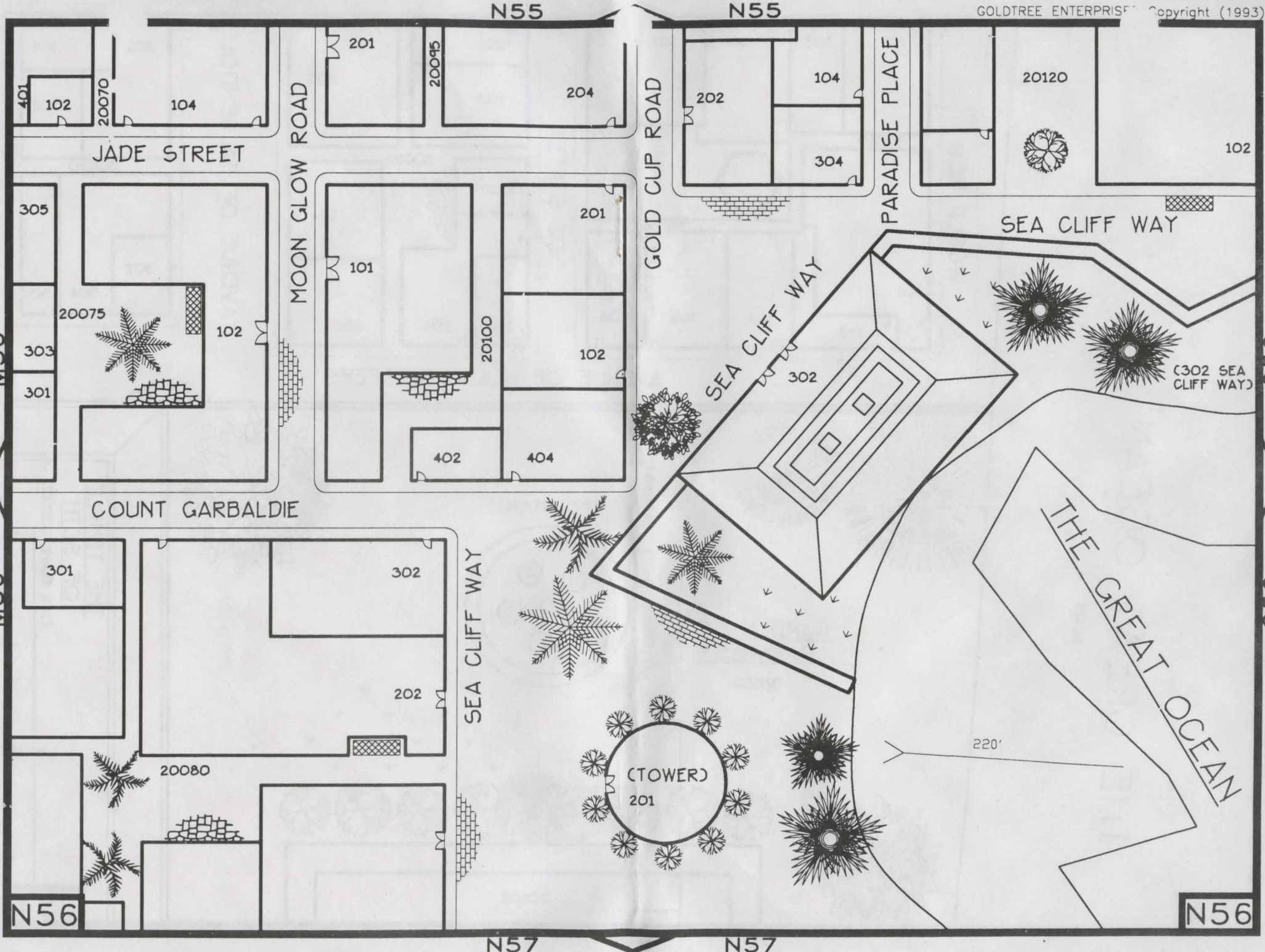
N55

N56

N56

O55

O55



N56

N56

N57

N57

M56

M56

M56

M56



N56

N56

COAST VIEW

202

204

206

20080

COAST VIEW

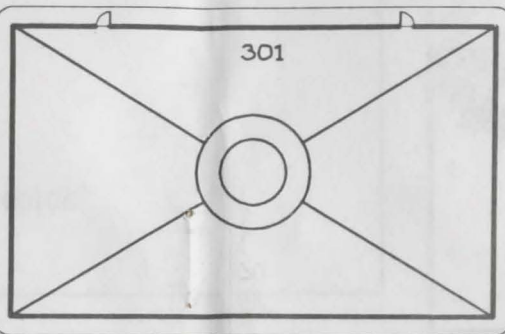
201

203

20085

102

SEA CLIFF WAY



301

GREEN COURT

101

20105

102

1102

1104

103

104

KING'S WALL ROAD

223'

228'

FINE MARKET  
80105

80010

GATE

THE GREAT OCEAN  
80115

N57

N57

M57

M57

OUTER CITY

80110

THE GREAT OCEAN

80115



80060

80030

80030

KING'S COVE

80035

(CROCKY BEACH)

118'

115'

106'

108'

N52

N52

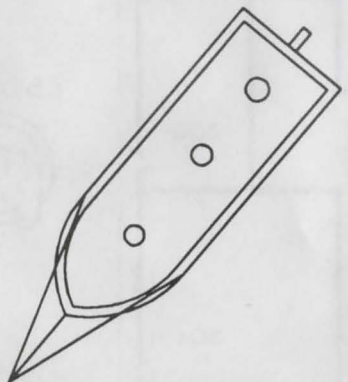
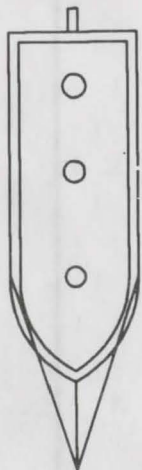


052

052

GOLDTREE ENTERPRISES

copyright (1993)



KING'S COVE

80035

053

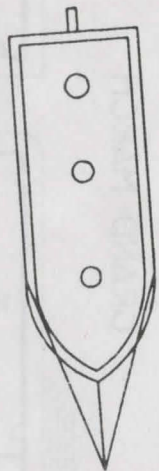
053

054

054

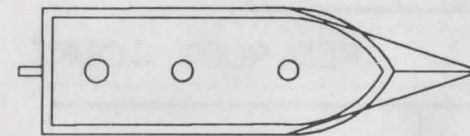
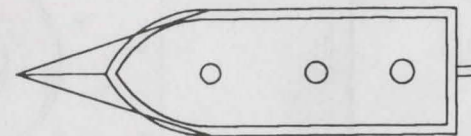
N53

N53



KING'S COVE

80035



243'

245'

80025

80020

054

054



054

054

80020

80025

80015

THE GREAT OCEAN

80115

N55

N55

108

20110

106

104

055

055

056

056

PARK PLACE

243'

245'

245'

242'

240'



O55

O55

80015



240'

THE GREAT OCEAN

80115

235'

102

SEA CLIFF WAY

PARK PLACE

(302 SEA CLIFF WAY)

N56

N56

O56

O56